

Aruba XFP Optical Modules

Installation Guide

Introduction

Aruba XFP modules, 10 Gbit small form-factor pluggable modules, are hot-swappable optical transceivers.

Aruba XFP Modules

- XFP-SR: conforms to the 10GBase-SR (short range) 10 Gigabit Ethernet standard
- XFP-LR: conforms to the 10GBase-LR (long range) 10 Gigabit Ethernet standard



Aruba tests and supports Aruba approved optics within their controller systems. Non-approved, third party optics are not tested or supported; therefore, Aruba does not guarantee proper functionality of non-approved, third party optics when used in an Aruba system. For a complete list of Aruba approved optics, contact your Aruba sales representative. [Aruba Approved XFP Modules](#) are listed on [page 1](#) of this guide.

Minimum Software Requirements and Platform Support

[Table 1](#) lists minimum software requirements and platform support for each Aruba XFP module.

Table 1 *Aruba XFP Compatibility Chart*

Aruba XFP Module	Minimum ArubaOS Software Requirement	Aruba Platform Support
XFP-SR	ArubaOS 3.2.0	Aruba Multi-Service Mobility Module Mark I
XFP-LR	ArubaOS 3.2.0	Aruba Multi-Service Mobility Module Mark I

Aruba Approved XFP Modules

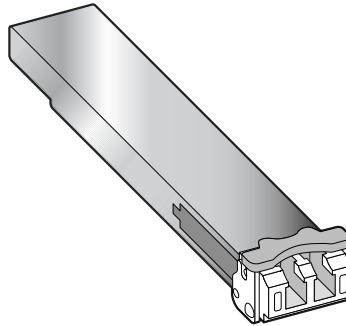
Table 2 *Aruba Approved XFP Modules*

Aruba XFP Module	Aruba Approved Third Party Manufacturer	Third Party Manufacturer Part Number
XFP-SR	Fiberxon, Inc.	FTM-83X0C-X03G
XFP-LR	Fiberxon, Inc.	FTM-33X1C-X10G

Specifications

Figure 1 shows the physical form factor of Aruba XFP modules.

Figure 1 XFP Module Form Factor



XFP-SR

Table 3 describes the specifications for the XFP-SR module.

Table 3 XFP-SR Specifications

Parameter	Specification	
Connector Type	LC fiber optic	
Wavelength	850 nm	
Rx Power	-1 to -11.1 dBm	
Tx Power	-7.3 to -1.0 dBm	
Distance	62.5 μ m core	~30 m
	50 μ m core – 500 MHz/km	~82 m
	50 μ m core – 2000 MHz/km	~300 m

XFP-LR

Table 4 describes the specifications for the XFP-LR module.

Table 4 XFP-LR Specifications

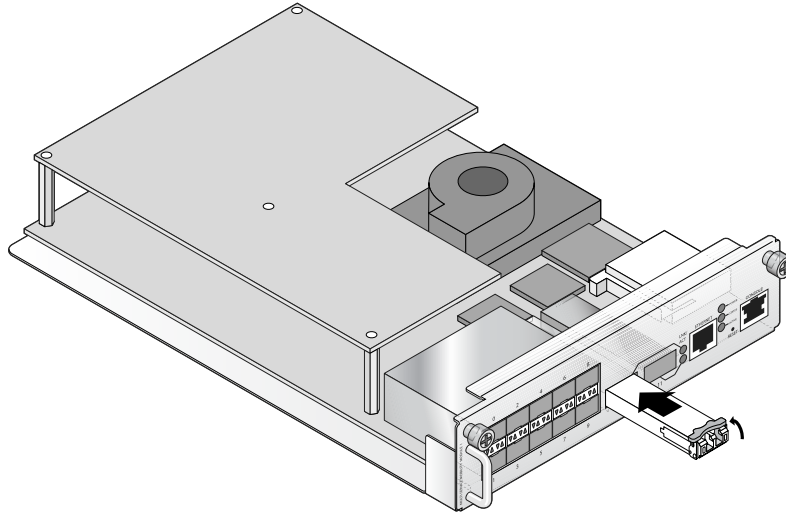
Parameter	Specification	
Connector Type	LC fiber optic	
Wavelength	1310 nm nominal, < 1 nm spectral width	
Rx Power	0.5 to -12.6 dBm	
Tx Power	-8.2 to 0.5 dBm	
Distance	9 μ m core	~10 km

XFP Installation

To install an XFP module:

1. Use standard ESD precautions when installing an XFP module.
2. Slide the XFP module, top side facing upward, into a 10GBase-X port until a connection is made and an audible click is heard (see [Figure 2](#)).
3. Lock the XFP in place by moving the latch on the module to an upright position, facing the top of the module (see [Figure 2](#)).

Figure 2 *Installing an XFP Module*

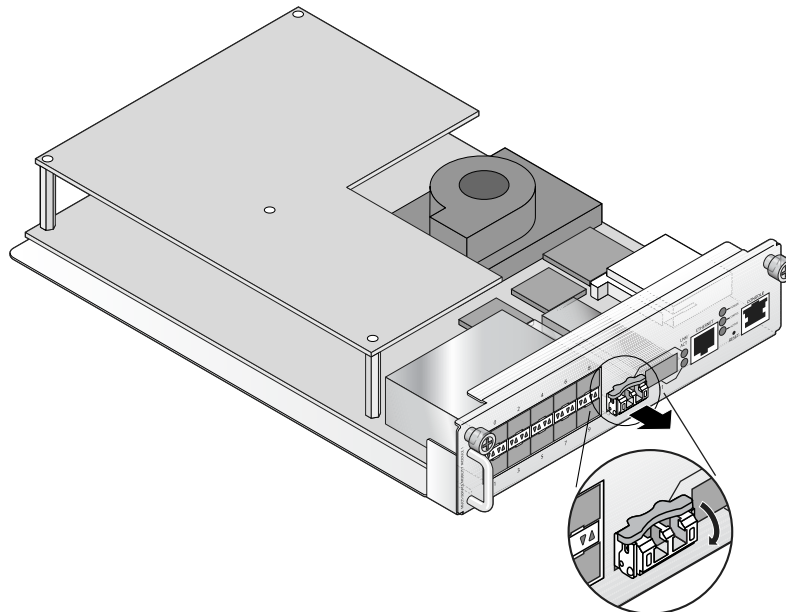


XFP Removal

To remove an XFP module:

1. Use standard ESD precautions when removing an XFP module.
2. Open and release the latch on the XFP module (see [Figure 3](#)).
3. Pull and remove the module from the port (see [Figure 3](#)).

Figure 3 *Removing an XFP Module*



Safety and Regulatory Compliance

Aruba provides a multi-language document containing country specific restrictions and additional safety and regulatory information for all Aruba hardware products. This document can be viewed or downloaded from the following location: www.arubanetworks.com/pdf/0510272-01.pdf.



Use of controls or adjustments of performance or procedures other than those specified in this manual may result in hazardous radiation exposure.

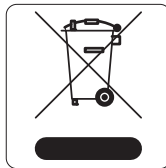
This product complies with 21 CFR Chapter 1, Subchapter J, Part 1040.10, and IEC 60825-1: 1993, A1: 1997, A2: 2001, IEC 60825-2: 2000.

For continued compliance with the above laser safety standards, only approved Class 1 modules from our approved vendors should be installed in Aruba products.

Proper Disposal of Aruba Equipment

For the most current information on Global Environmental Compliance and Aruba products please see our website at www.arubanetworks.com.

Waste of Electrical and Electronic Equipment



Aruba products at end of life are subject to separate collection and treatment in the EU Member States, Norway, and Switzerland and therefore are marked with the symbol shown at the left (crossed-out wheelie bin). The treatment applied at end of life of these products in these countries shall comply with the applicable national laws of countries implementing Directive 2002/96EC on Waste of Electrical and Electronic Equipment (WEEE).

European Union RoHS



Aruba products also comply with the EU Restriction of Hazardous Substances Directive 2002/95/EC (RoHS). EU RoHS restricts the use of specific hazardous materials in the manufacture of electrical and electronic equipment. Specifically, restricted materials under the RoHS Directive are Lead (including Solder used in printed circuit assemblies), Cadmium, Mercury, Hexavalent Chromium, and Bromine. Some Aruba products are subject to the exemptions listed in RoHS Directive Annex 7 (Lead in solder used in printed circuit assemblies). Products and packaging will be marked with the "RoHS" label shown at the left indicating conformance to this Directive.

China RoHS



Aruba products also comply with China environmental declaration requirements and are labeled with the "EFUP e" label shown at the left.

Contacting Aruba

Web Site Support	
Main Site	http://www.arubanetworks.com
Support Site	http://www.arubanetworks.com/support
Software Licensing Site	https://licensing.arubanetworks.com
Wireless Security Incident Response Team (WSIRT)	http://www.arubanetworks.com/support/wsirt.php
Support Email	support@arubanetworks.com
WSIRT Email Please email details of any security problem found in an Aruba product.	wsirt@arubanetworks.com

Telephone Support	
Aruba Headquarters	+1 (408) 227-4500
FAX	+1 (408) 227-4550
Customer Support:	
• United States	800-WI-FI-LAN (800-943-4526)
• France	+33 (0) 1 70 72 55 59
• United Kingdom	+44 (0) 20 7127 5989
• Germany	+49 (0) 69 38 09 77 22 8
• All Other Countries	+1 (408) 754-1200



www.arubanetworks.com

1322 Crossman Avenue
Sunnyvale, California 94089

Phone: 408.227.4500
Fax 408.227.4550

© 2007 Aruba Networks, Inc. All rights reserved.