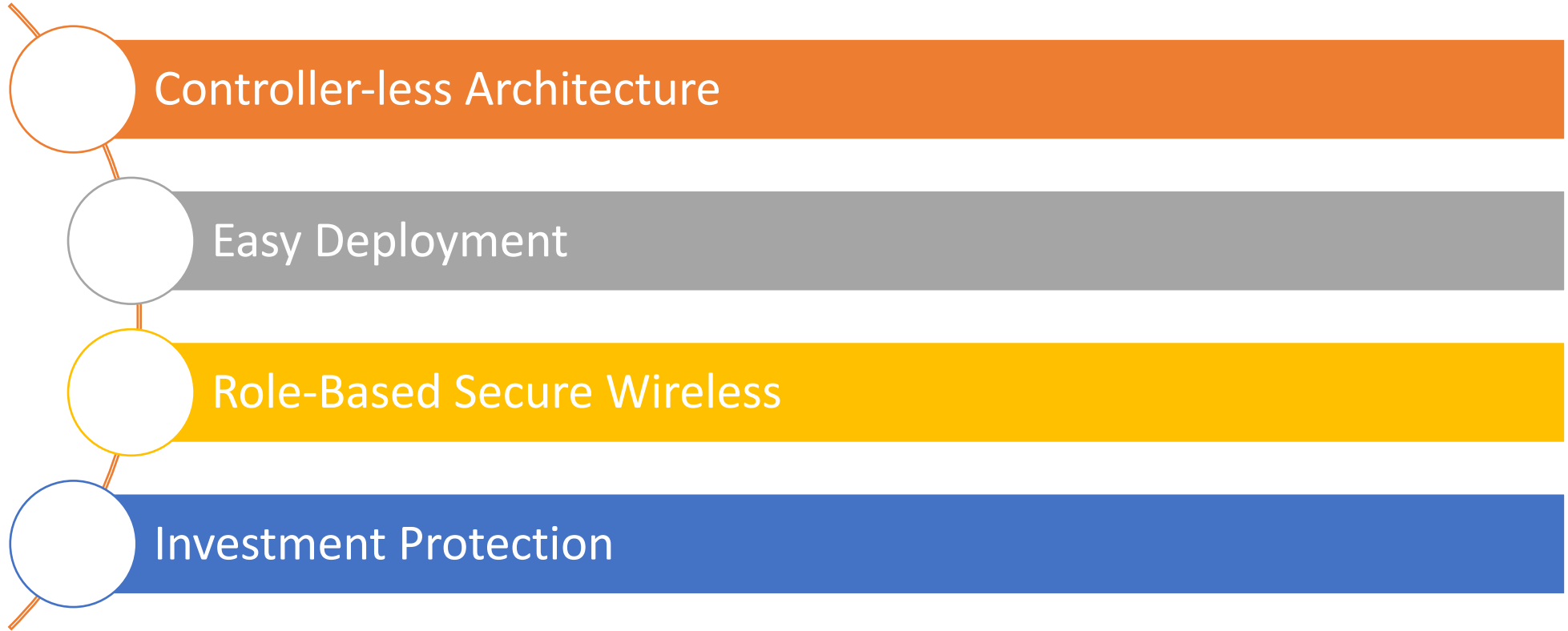


# Tek Noktadan Dağıtık Ağların Yönetimi

## Aruba Instant – Aruba Central



## Instant Benefits



# Product Family



## 340 Series 11ac Wave 2

4x4:4 MU-MIMO  
Dual 5GHz Radio capable  
Dual uplink, BLE, USB  
Smart Rate (2.5/5GBASE-T)

## 330 Series 11ac Wave 2

4x4:4 MU-MIMO  
Dual uplink, BLE, USB  
Smart Rate (2.5/5GBASE-T)

## 320 Series 11ac Wave 2

4x4:4 MU-MIMO  
Dual uplink, BLE, USB

## 310 Series 11ac Wave 2

4x4:4 MU-MIMO  
BLE, USB

## 300 Series 11ac Wave 2

3x3:3 MU-MIMO  
BLE, USB

## 303 Series 11ac Wave 2

2x2:2 Dual-radio  
BLE, USB



## 303H 11ac

3 Ports, PoE Out  
2x2:2 Wave 2  
Dual-radio, BLE  
USB



## 203H 11ac

1 GbE Ports Out  
2x2:2 flex-radio  
USB



## 203R 11ac

2 GbE Ports Out, 1x PoE Out  
2x2:2 Flex-radio, BLE, USB  
20 Mbps wired IPsec encryption



## 328 Series 11ac

2 GbE Ports Out, 1x PoE Out  
2x2:2 Flex-radio, BLE, USB  
20 Mbps wired IPsec encryption



## 367 11ac Wave 2

2x2:2 Dual-radio, BLE  
90° Directional Antennas



## 365 11ac Wave 2

2x2:2 Dual-radio, BLE  
Omnidirectional Antennas



## 375 11ac Wave 2

3x3:3 Dual-radio  
Omnidirectional Antennas



## 377 11ac Wave 2

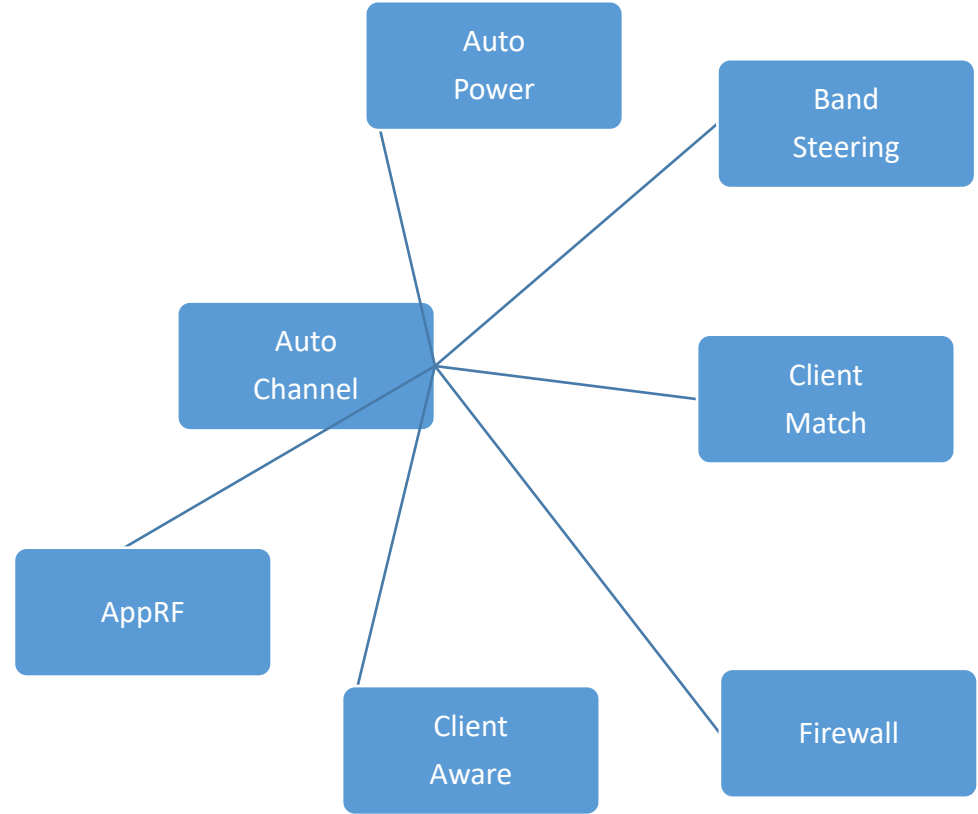
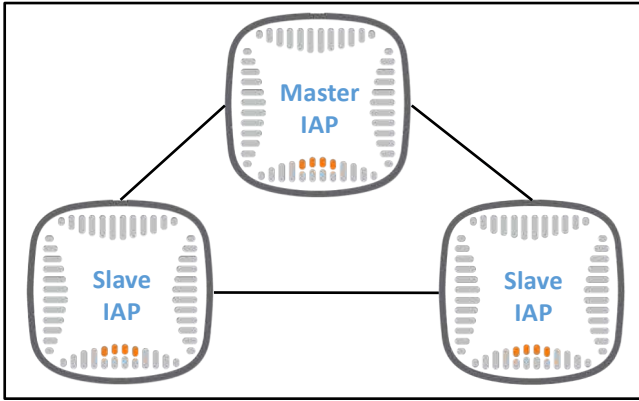
3x3:3 Dual-radio  
80° Directional Antennas

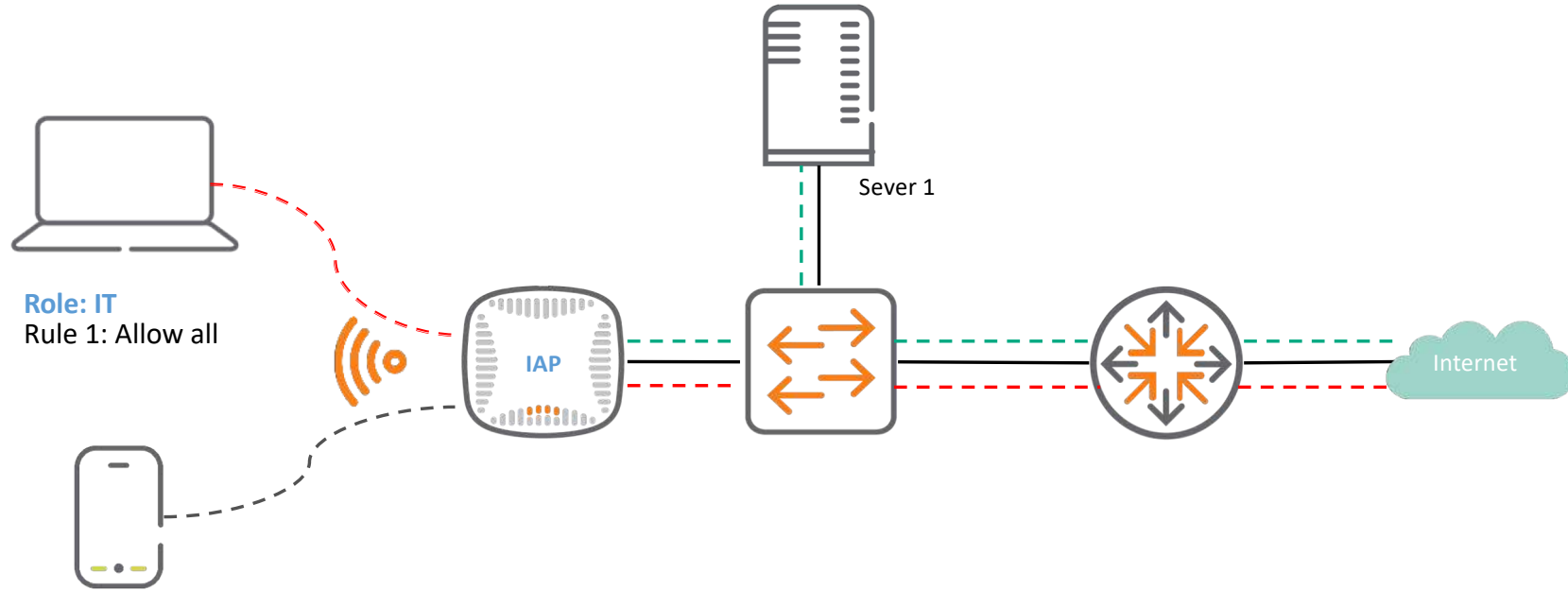


## 374 11ac Wave 2

3x3:3 Dual-radio  
3 External Antenna Connectors







## Content Filtering

Edit SD-Emp-Temp Help

1 WLAN Settings 2 VLAN 3 Security 4 Access

### Access Rules

More Control

- Role-based

☒ - Network-based

- Unrestricted

Less Control

Access Rules (4)

- Deny application youtube to all destinations
- Deny application whatsapp to all destinations
- Allow any to all destinations
- Allow application netflix to all destinations + application bandwidth of downstream 2000 kbps/upstream 500 kbps

Edit Rule: Allow application netflix to all destinations + application bandwidth of downstream 2000 kbps/upstream 500 kbps

Rule type: Access control

Service: ☐ Network ☒ Application ☐ Application category ☐ Web category ☐ Web reputation

Action: Allow

Destination: to all destinations

Options:

☒ Application Throttling

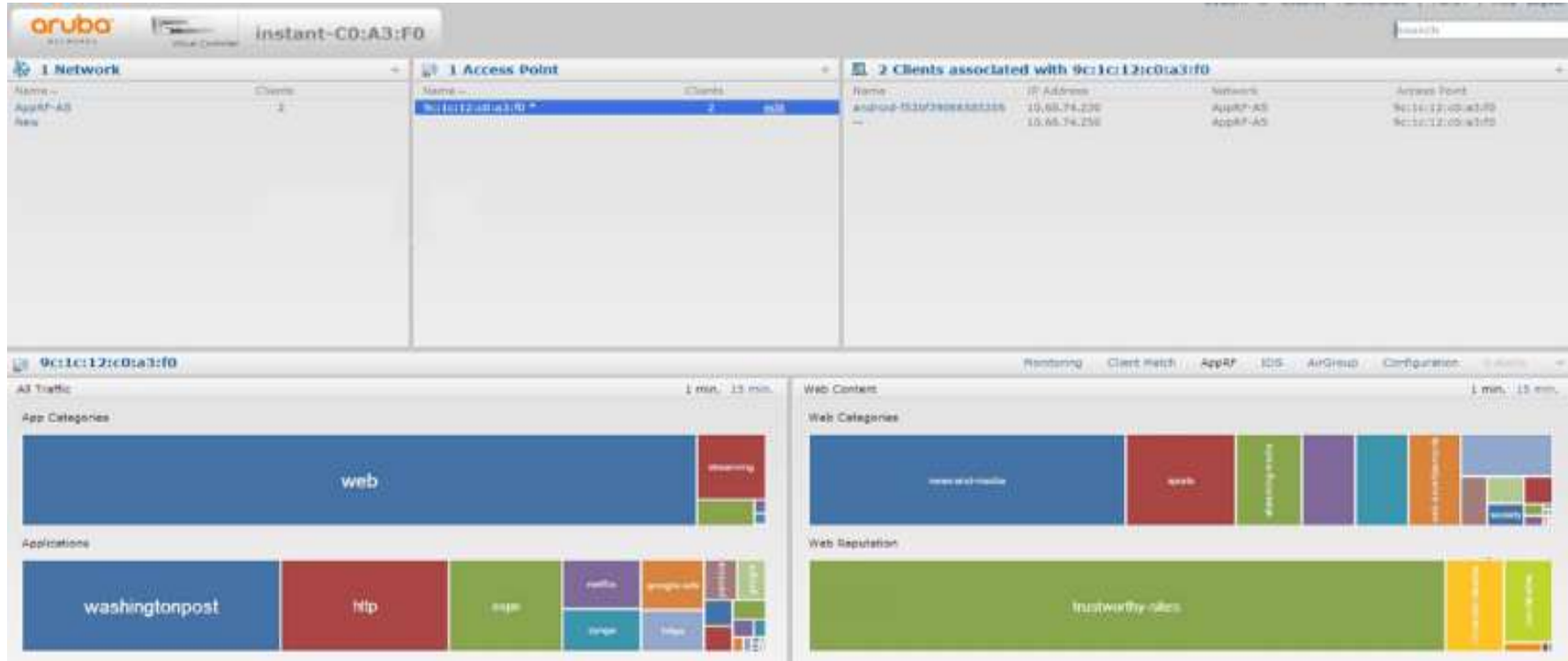
Downstream: 2000 kbps Upstream: 500 kbps

☐ Log ☐ DSCP tag ☐ Blacklist ☐ Disable scanning ☐ 802.1p priority

Note: Application and Application category rules will only be applied on supported platforms.

OK Cancel


Back Finish Cancel



## Guest Captive Portal

Captive Portal

Not Secure | [https://10.70.172.251:4343/swarm.cgi?opcode=cp\\_preview&sid=v3hUWB07SXiiWDBPTse2&bg\\_color=16777215&...](https://10.70.172.251:4343/swarm.cgi?opcode=cp_preview&sid=v3hUWB07SXiiWDBPTse2&bg_color=16777215&...)



**Welcome to Nick's Café**

Please read terms and conditions before using Guest Network

This network is not secure and use is at your own risk

USERNAME

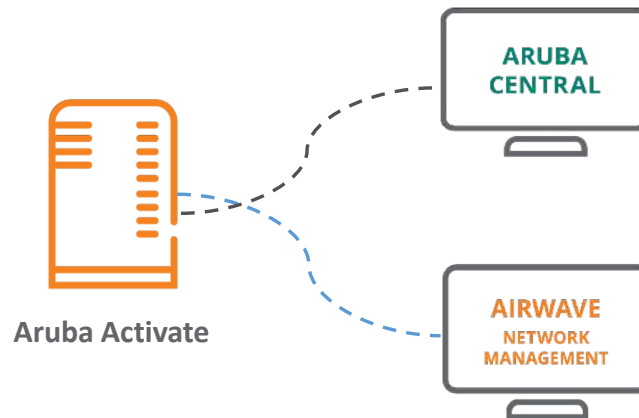
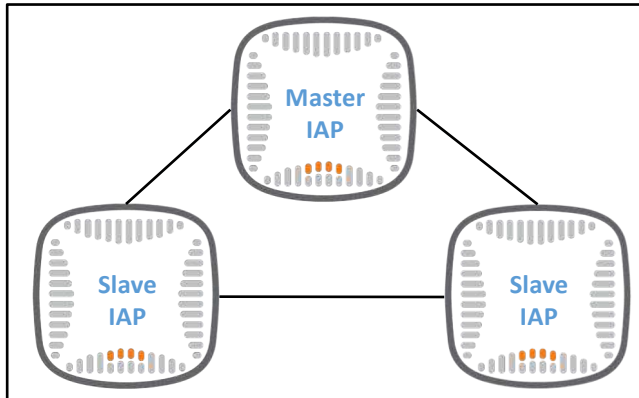
.....

☐ I agree with the terms and conditions

Login



## Instant Provisioning

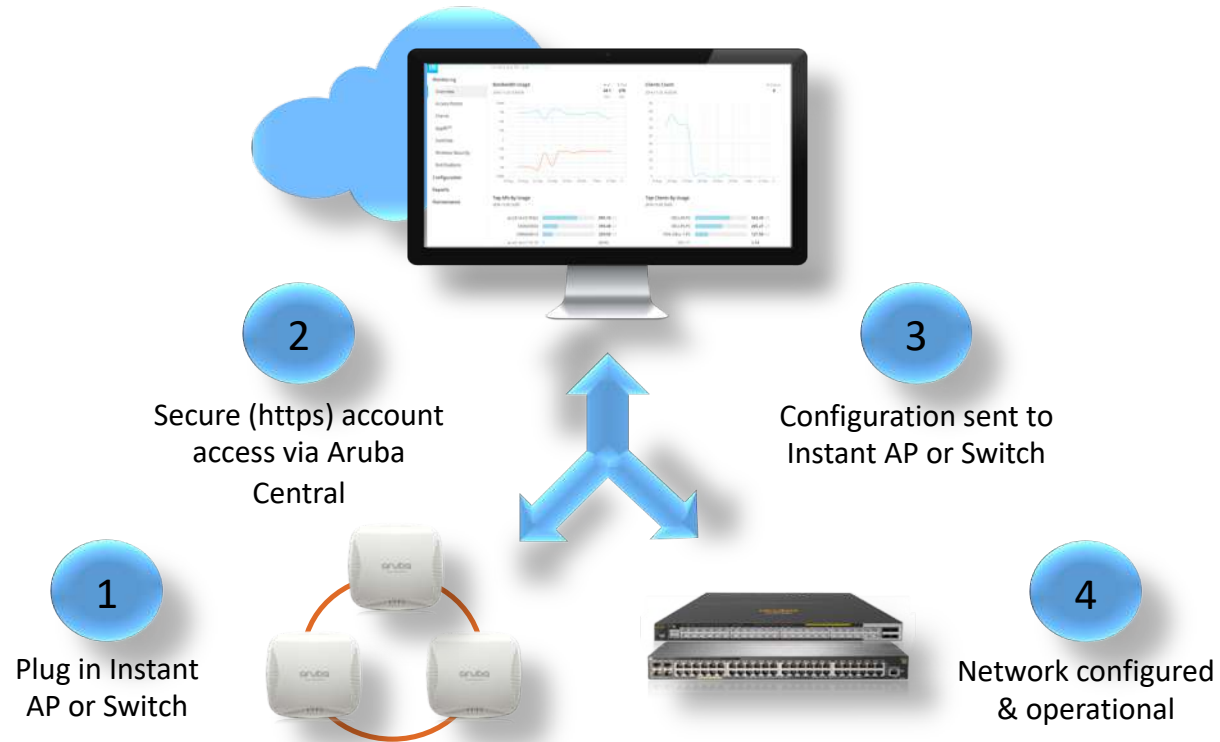


Configure ONLY Master AP

Other APs auto-join in same  
L2 Slaves

ZTP with Activate for  
AirWave and Central

# Aruba Central Zero Touch Provisioning



## Why Cloud-Managed Networks

### Simple:

- No management hardware & software to maintain.
- Easy network deployment.



### Reliable:

- Guaranteed uptime.
- Local management if cloud connectivity fails.

### Intelligent:

- Built-in hardware capabilities to ensure performance & visibility.
- Analytics to improve business & user experience.



### Flexible:

- Easy to scale network.
- Ongoing innovation.
- Subscription options - OPEX.
- Anytime, anywhere access.

## Add Device

### DEVICE INVENTORY

View the devices in your inventory and manage them.

**ADD DEVICES**

**VIEW DEVICES**

SERIAL NUMBER	MAC ADDRESS
● CNCRK2T02T	20:4C:03:00:00:00

**ASSIGN GROUP**

### ADD DEVICES

Add up to 9 devices by entering the Serial Number and MAC Address for each device

SERIAL NUMBER	MAC ADDRESS
SERIAL NUMBER	MAC ADDRESS
SERIAL NUMBER	MAC ADDRESS
SERIAL NUMBER	MAC ADDRESS
SERIAL NUMBER	MAC ADDRESS

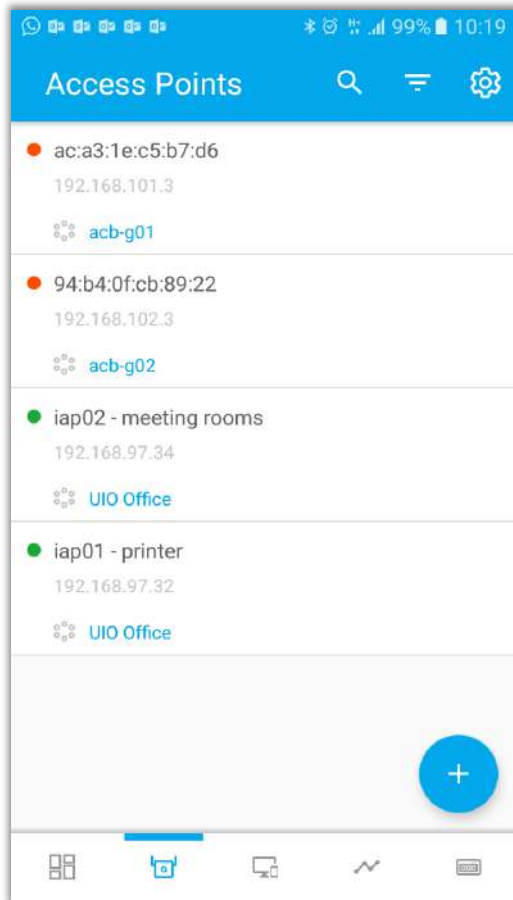
**Add more devices** **Done**

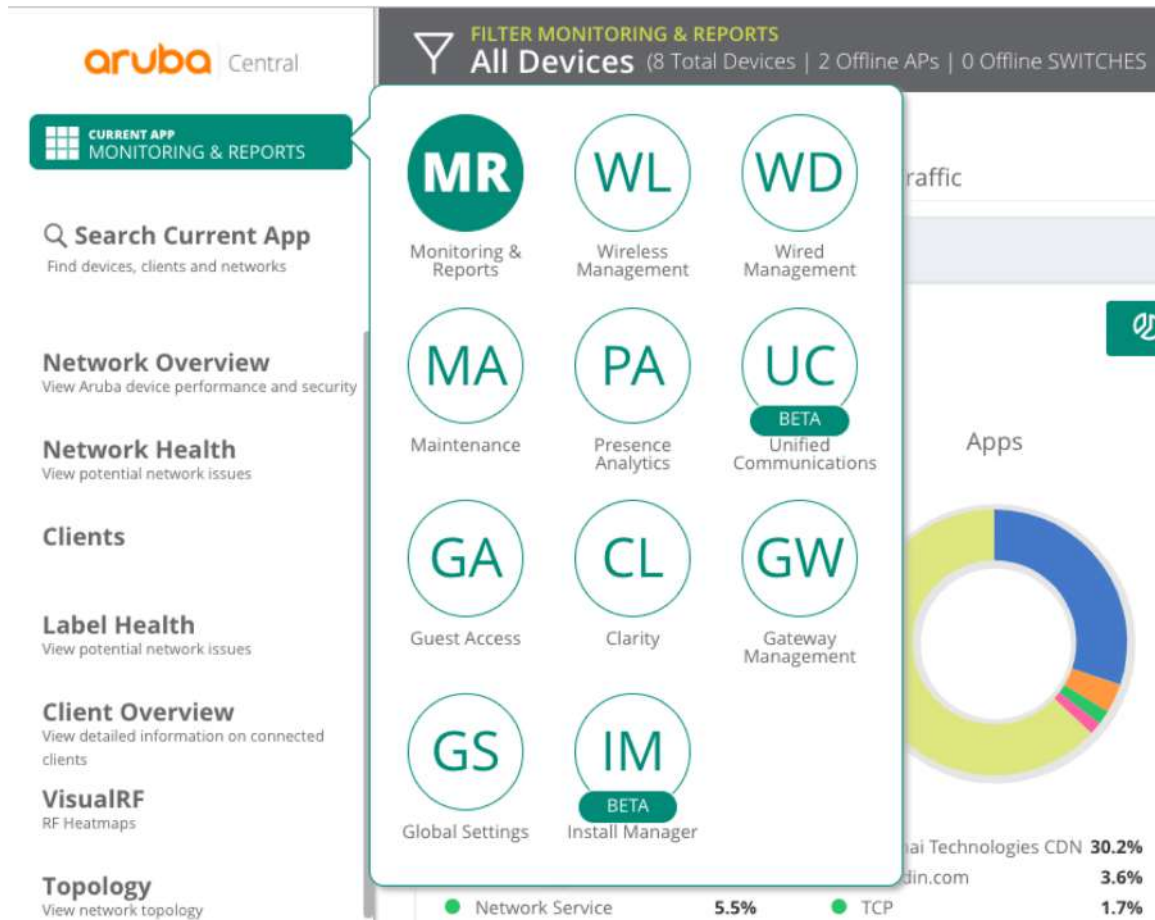
**ADVANCED**

PART NUMBER	GROUP	STATUS
JY712A	default	

1 Device(s)

Subscribed   
Unsubscribed

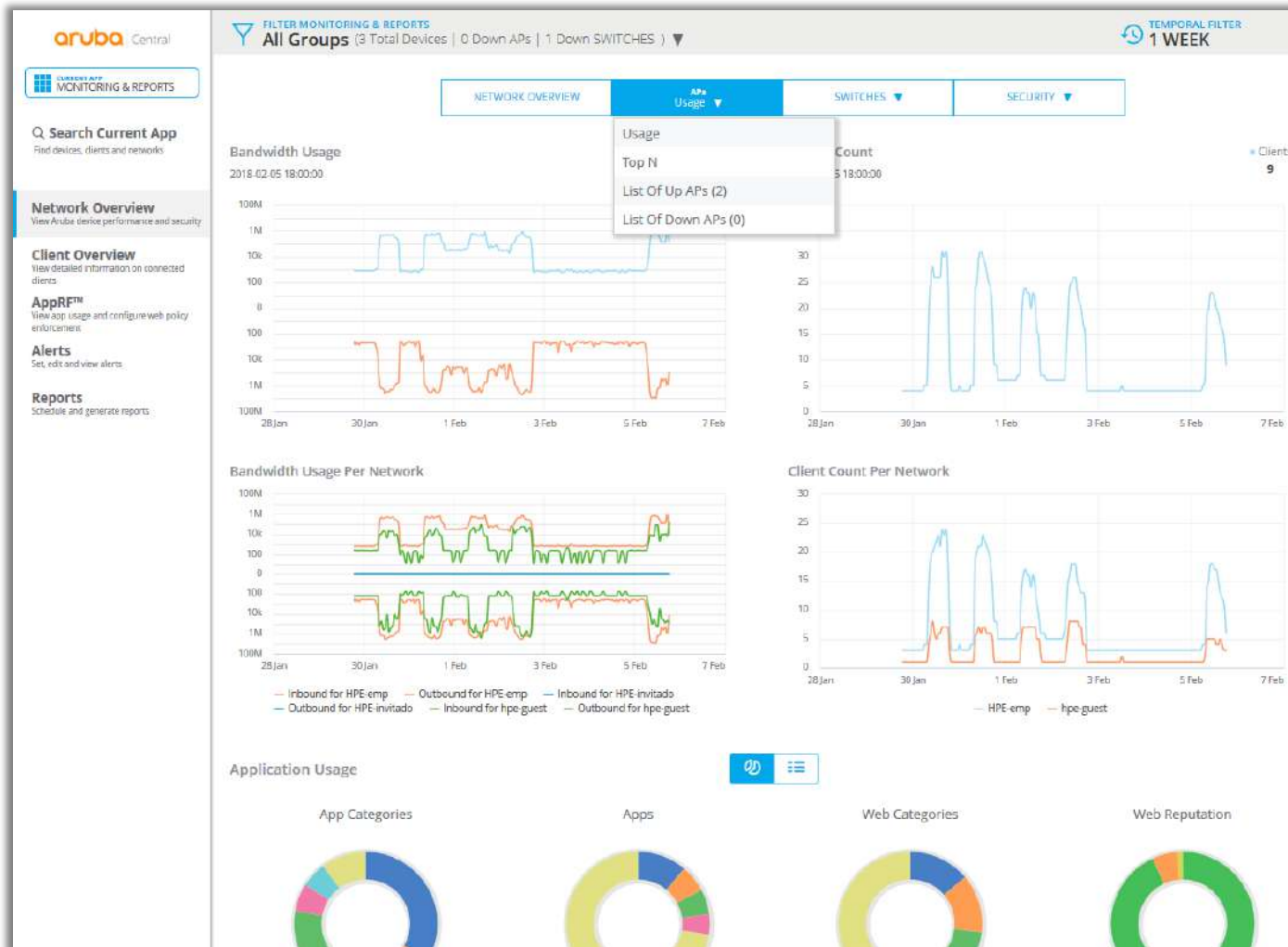


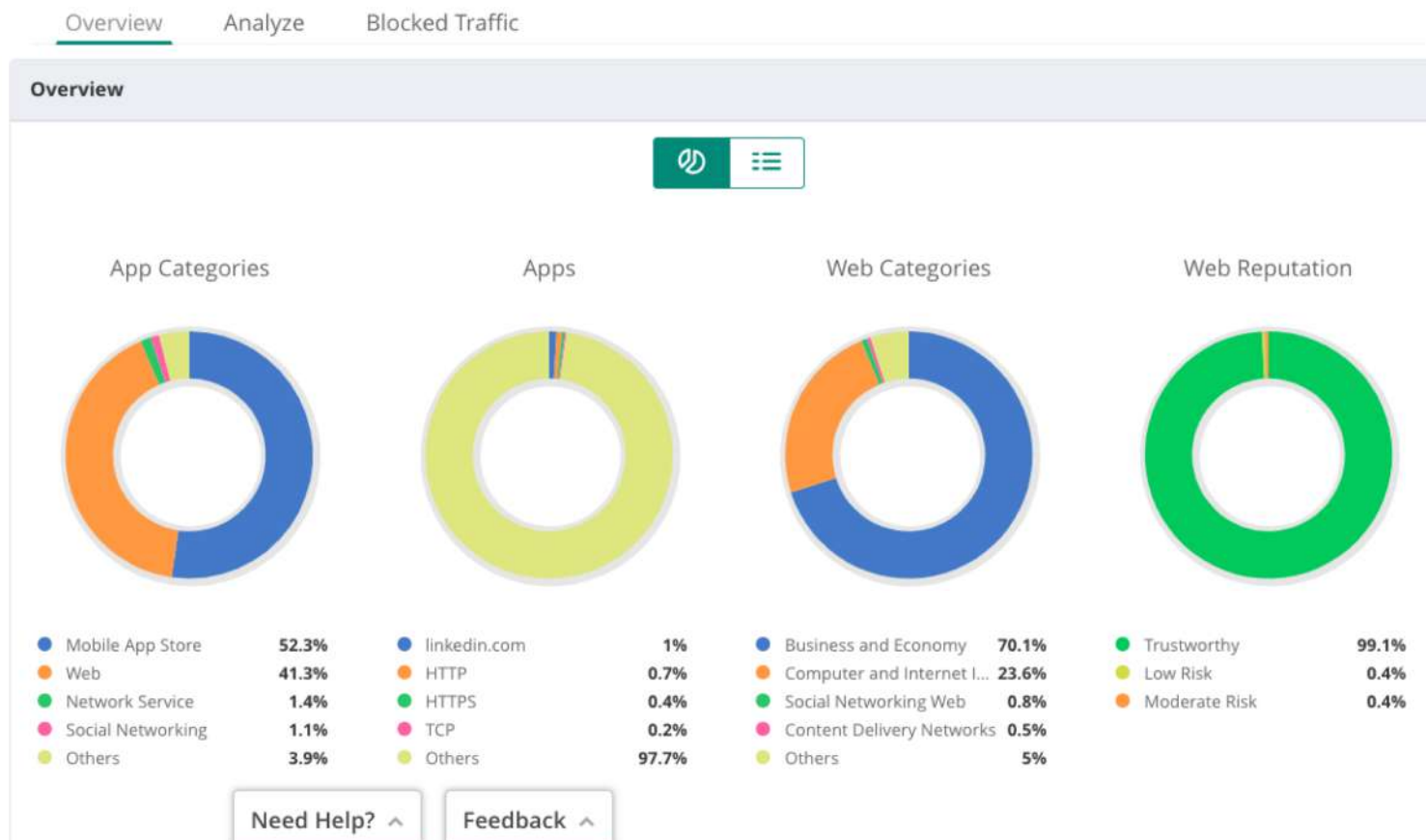


Workflows categorized in Applications

Granular Control with each Application

Single-pane of Glass





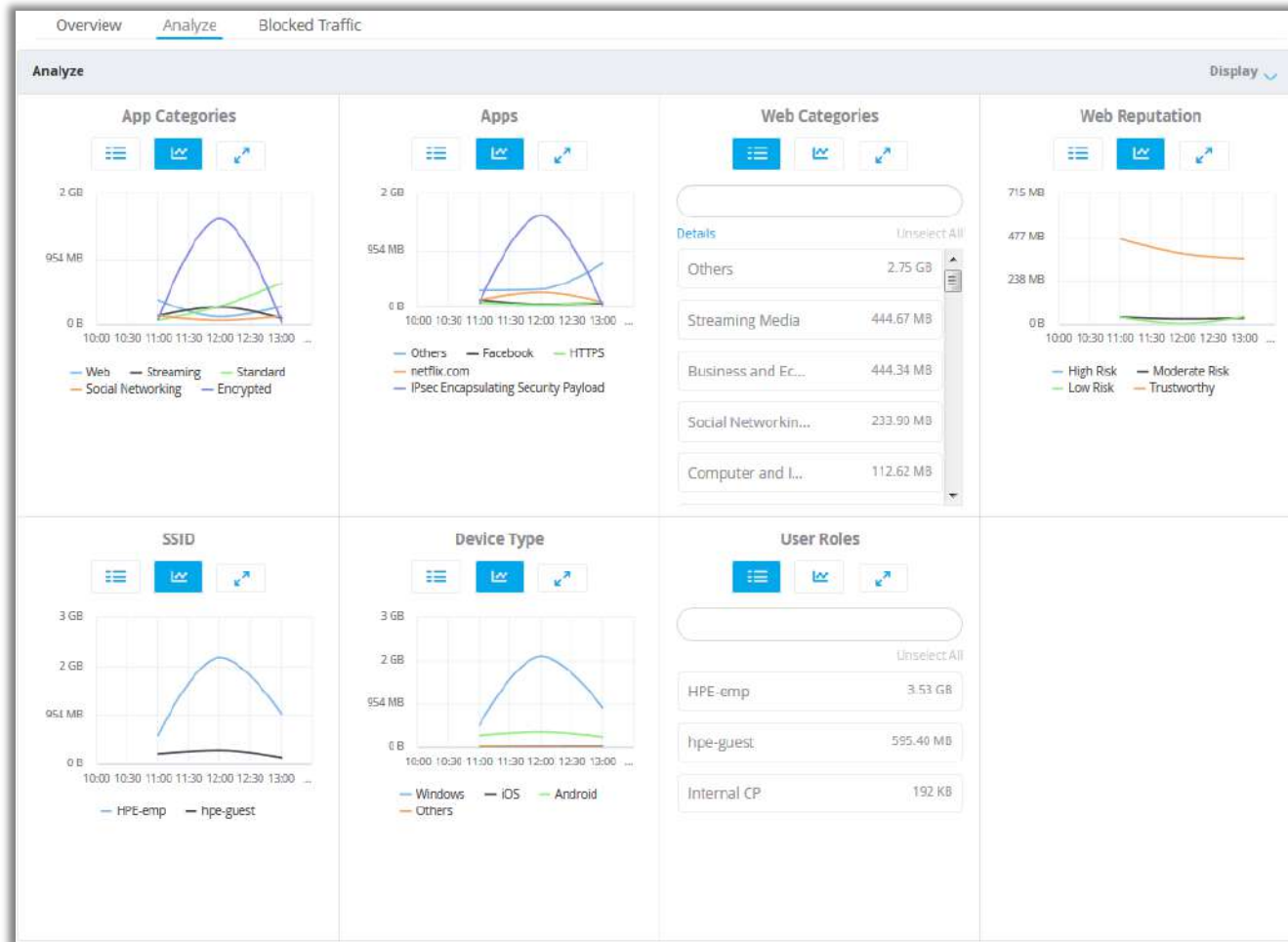
Monitor usage to optimize and secure the network

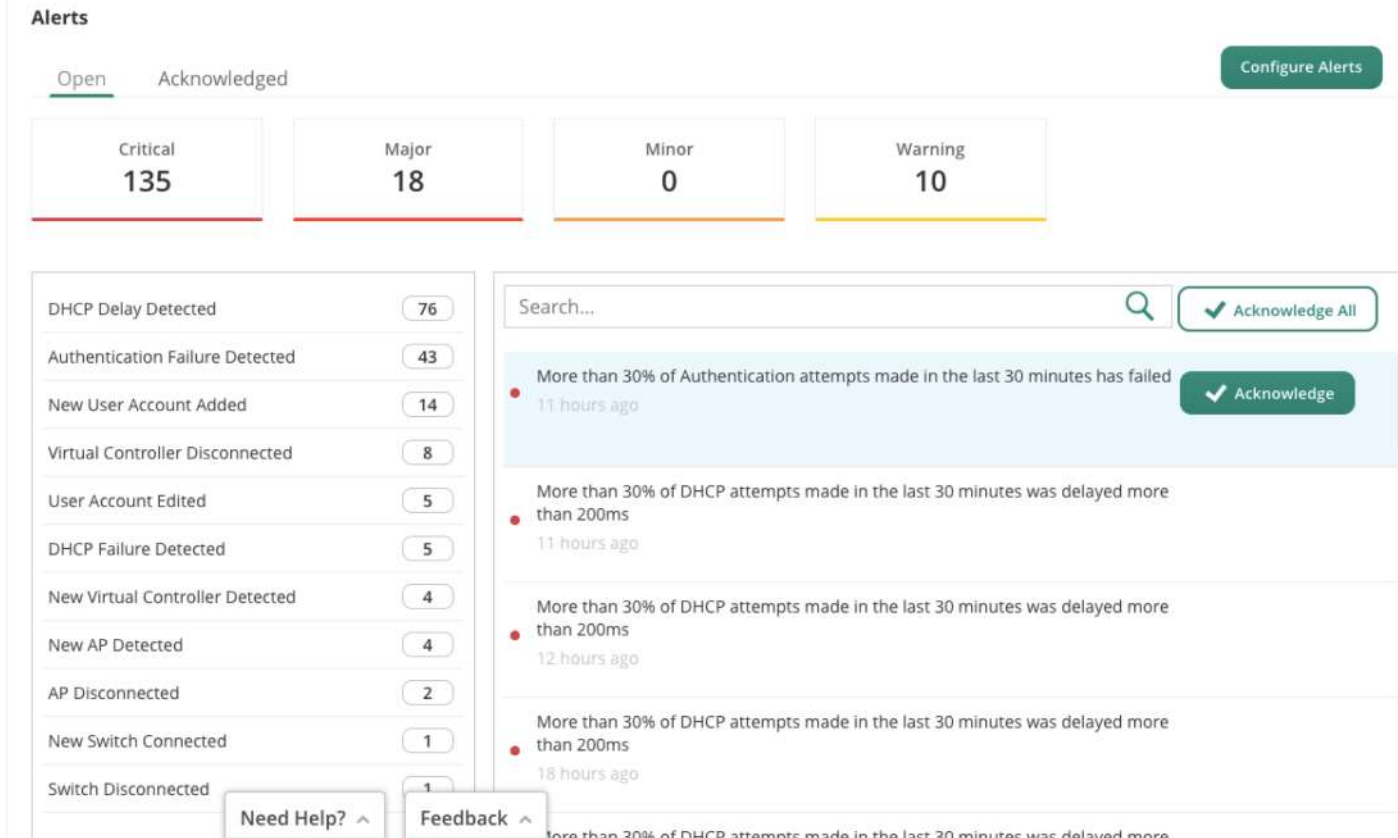
Prioritize business critical applications

Block Inappropriate Content  
Download Blocked Sessions

Enforce on a per user, device or location basis



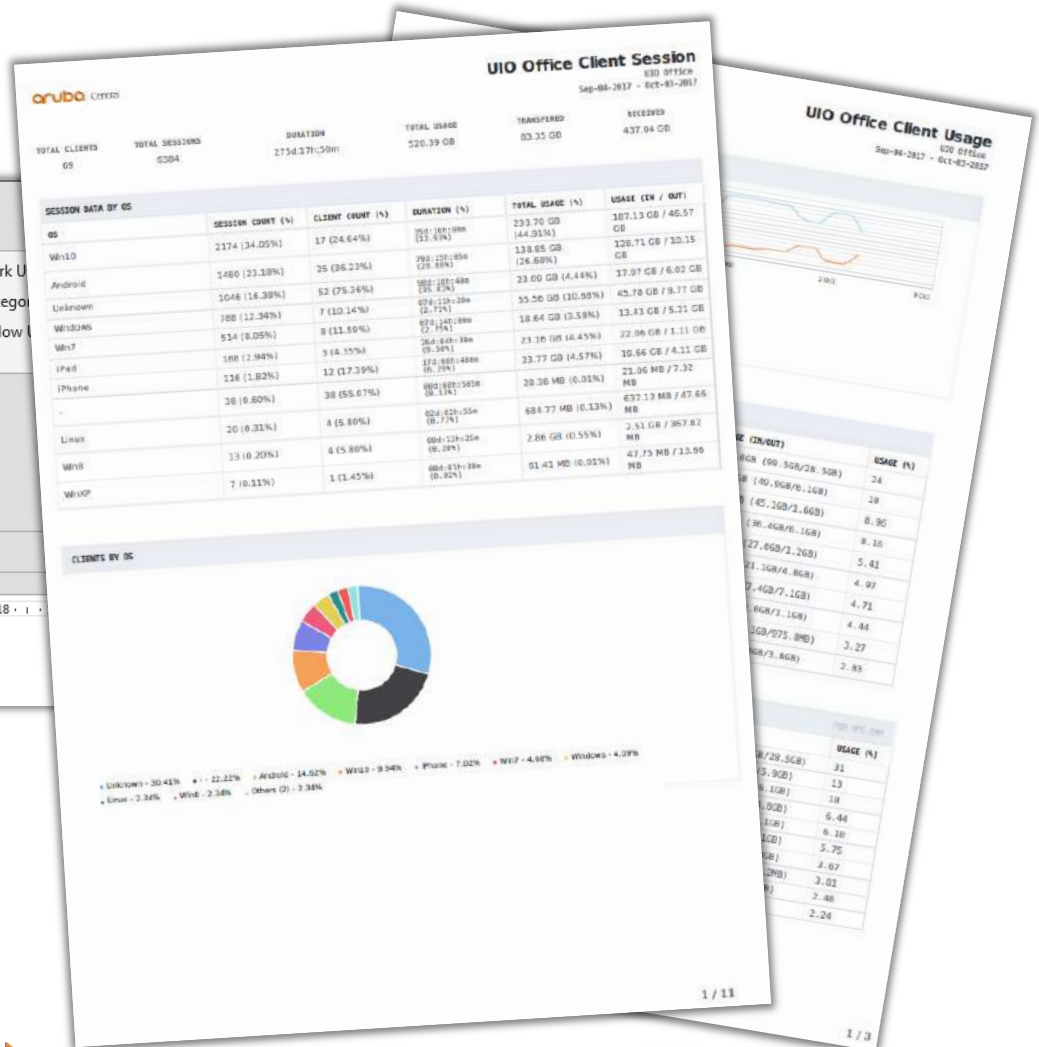
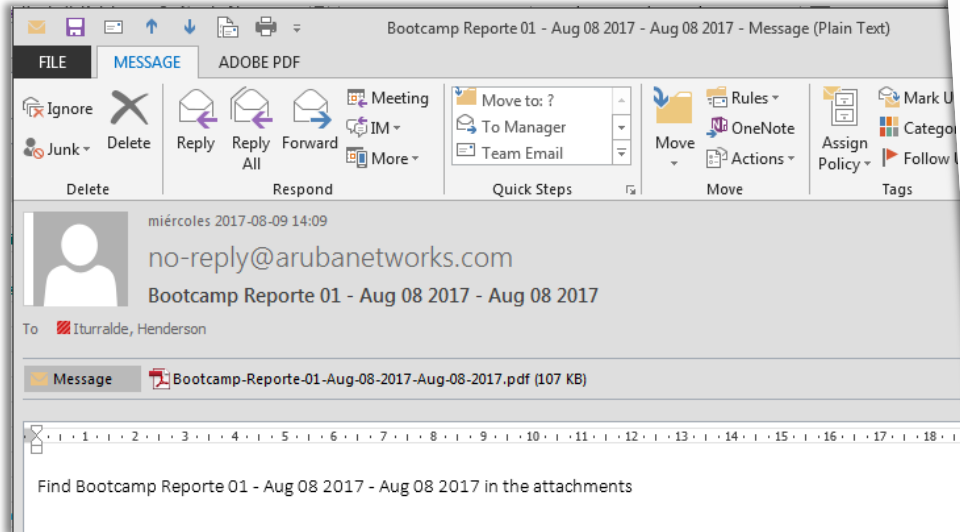




Connectivity - DNS, DHCP,  
Authentication and Association

Wireless - AP, VC & Rogue Status,  
Attacks, CPU & Utilization

Wired - Switch Health,  
Utilization, Errors



Connectivity Health(CH)

90

Attempts

4

Success Rate

100%

Timely

4

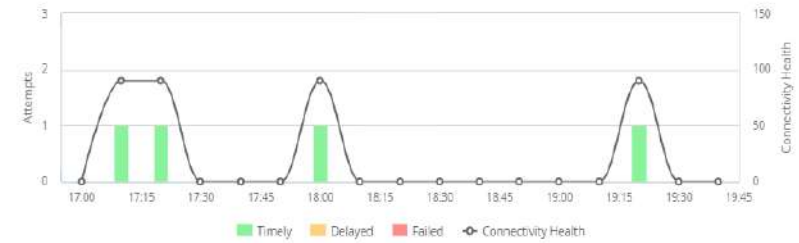
Delayed

0

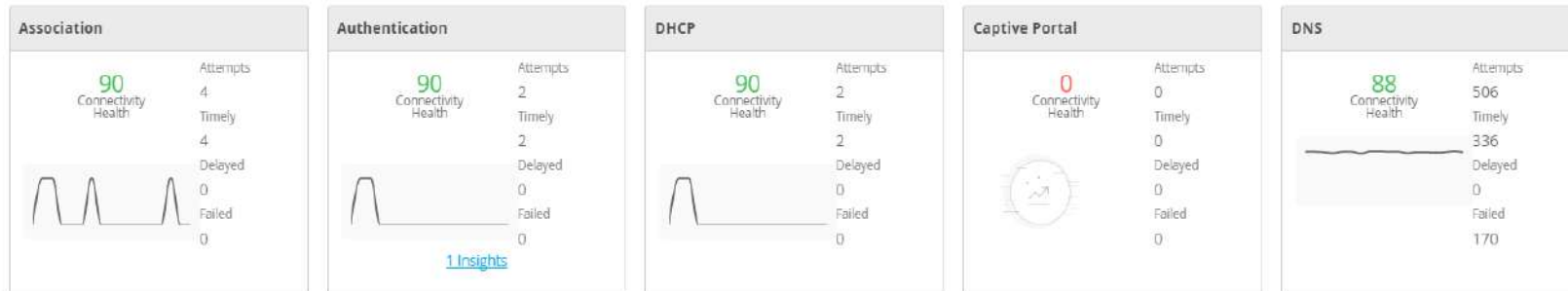
Failed

0

### Connectivity Performance



### Stage-wise Performance



Delay - Causes

Failure - Causes

1 General 2 VLANs 3 Security 4 Access

Access Rules:

Role Based Network Based Unrestricted

Roles

ROLE

- Central-Employee-VC1
- Central-Gym-VC1
- default\_wired\_port\_profile
- wired-SetMeUp

Access Rules For Selected Roles

- Deny Adult and Pornography
- Deny Gambling
- Deny Peer to Peer Web
- Allow any to all destinations

NEW ROLE ASSIGNMENT RULE

Attribute: User-Name Operator: contains String: Employee Role: Central-Employee-VC1

Cancel Save

Define User-Role based Access Control Policies

Derive User Roles and VLAN Assignment Rules

Segment Traffic within the same SSID

## USERS & ROLES

NEW ROLE

Role Name: NOC\_ANALYST

APPLICATION PERMISSIONS

Group Management View, create, delete groups and assign devices to groups	<input checked="" type="radio"/> View Only	<input type="radio"/> Modify	
Device Inventory Provision devices and manage subscription keys	<input checked="" type="radio"/> View Only	<input type="radio"/> Modify	<input type="radio"/> Block
Network Management Configure, troubleshoot, and monitor networks	<input checked="" type="radio"/> View Only	<input type="radio"/> Modify	<a href="#">Customize</a>
Guest Management	<input checked="" type="radio"/> View Only	<input type="radio"/> Modify	<input type="radio"/> Block
Presence Analytics	<input checked="" type="radio"/> View Only	<input type="radio"/> Modify	<input type="radio"/> Block

Cancel

Save







## Custom captive portals:

- Logo, background, colors, image, welcome message, terms & conditions, and optional in-page ads.

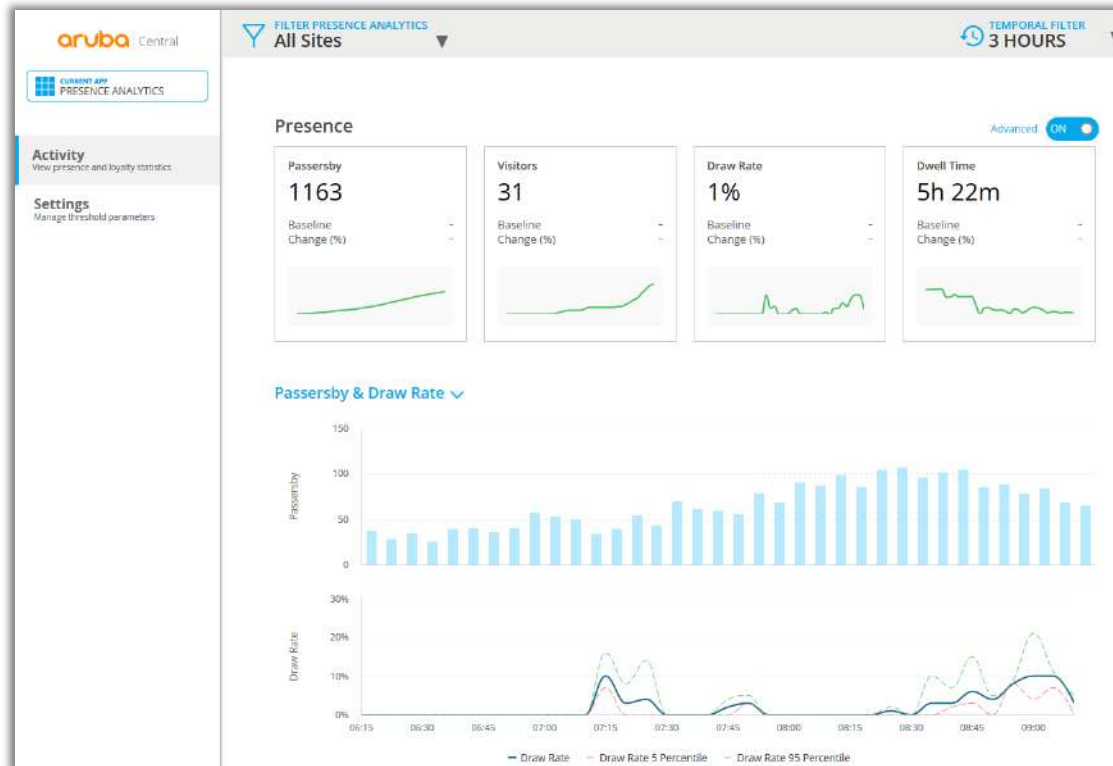
## Registration choices:

- Anonymous login.
- Self-registration.
- Social login.

## Control Options:

- Session duration.
- Usage limits.
- Landing page.
- Guest operator controlled logins.





Passersby

How many passed by the entrance



Visitors

How many entered



Engaged

How many stayed



Dwell Time

How long they stayed

