



# Enabling BYOD Workshop

Aruba Network Services Team  
March 2013

# Agenda



Deploying ClearPass Onboard  
BYOD Policy  
Technology Overview  
Profiling BYO Devices  
Integrating ClearPass with MDM  
Onboard Provisioning  
Troubleshooting  
Q&A



# Onboarding with ClearPass

# Deploying ClearPass Onboard



- **Planning**
  - BYOD Policy
- **Configuring**
  - CA settings
  - Network Settings
  - Provisioning Settings
  - Advanced Settings
- **Lifecycle Management**
  - User experience
  - Lost, expired, revoked devices
  - Troubleshooting





# BYOD Policy

# Building a BYOD Policy (Gartner)



- **Device diversity**
- **Policy enforcement**
- **Security and compliance**
- **Containerization**
- **Inventory management**
- **Software distribution**
- **Administration and reporting**
- **IT service management**
- **Network service management**



# Technology Overview



- **Detecting new BYO Devices**
  - Lack of Provisioned Credential
  - Device Profiling
  - MDM Integration
- **User Managed Provisioning Workflow**
  - Setup PKI for device credentials
  - Provisioning Settings
  - Network Settings
  - Advanced Settings
  - Troubleshooting

# BYOD Workflow



- Supplicant Config
- Push Trusted Cert
- Enable Posture
- Set Auth type

## 1 Onboard Device

- Enrolment workflow
- Authorize User to provision device
- Device credential push
- Link User to Device

## 2 Join BYOD Domain

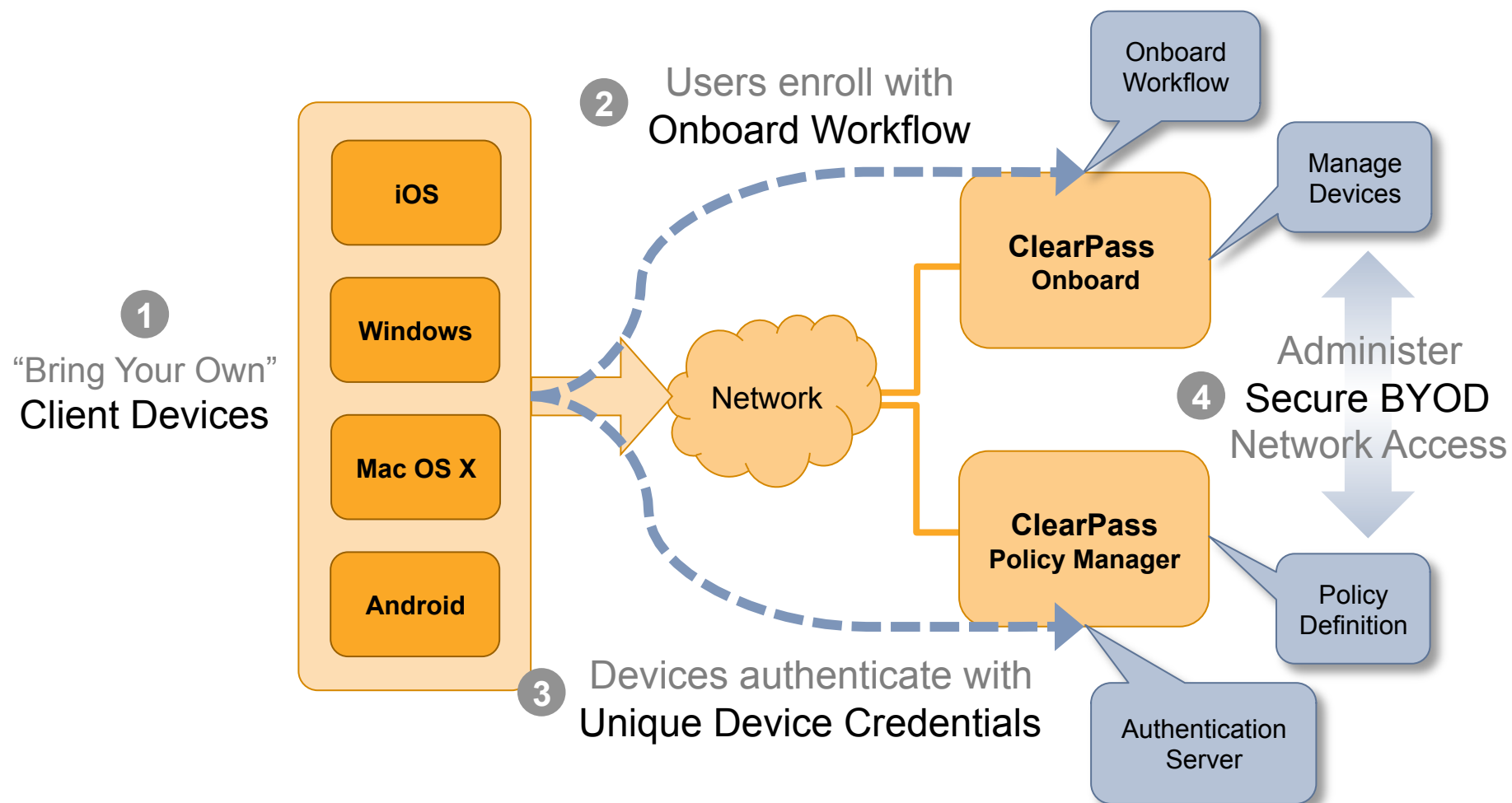
## 4 Visibility & Reporting

- Complete view device & network
- Command & Control
- Inventory
- Diagnostics

## 3 Device Access Controls

- Revoke Device Access
- Device Profiling
- Role Derivation
- Corp vs Employee Liable

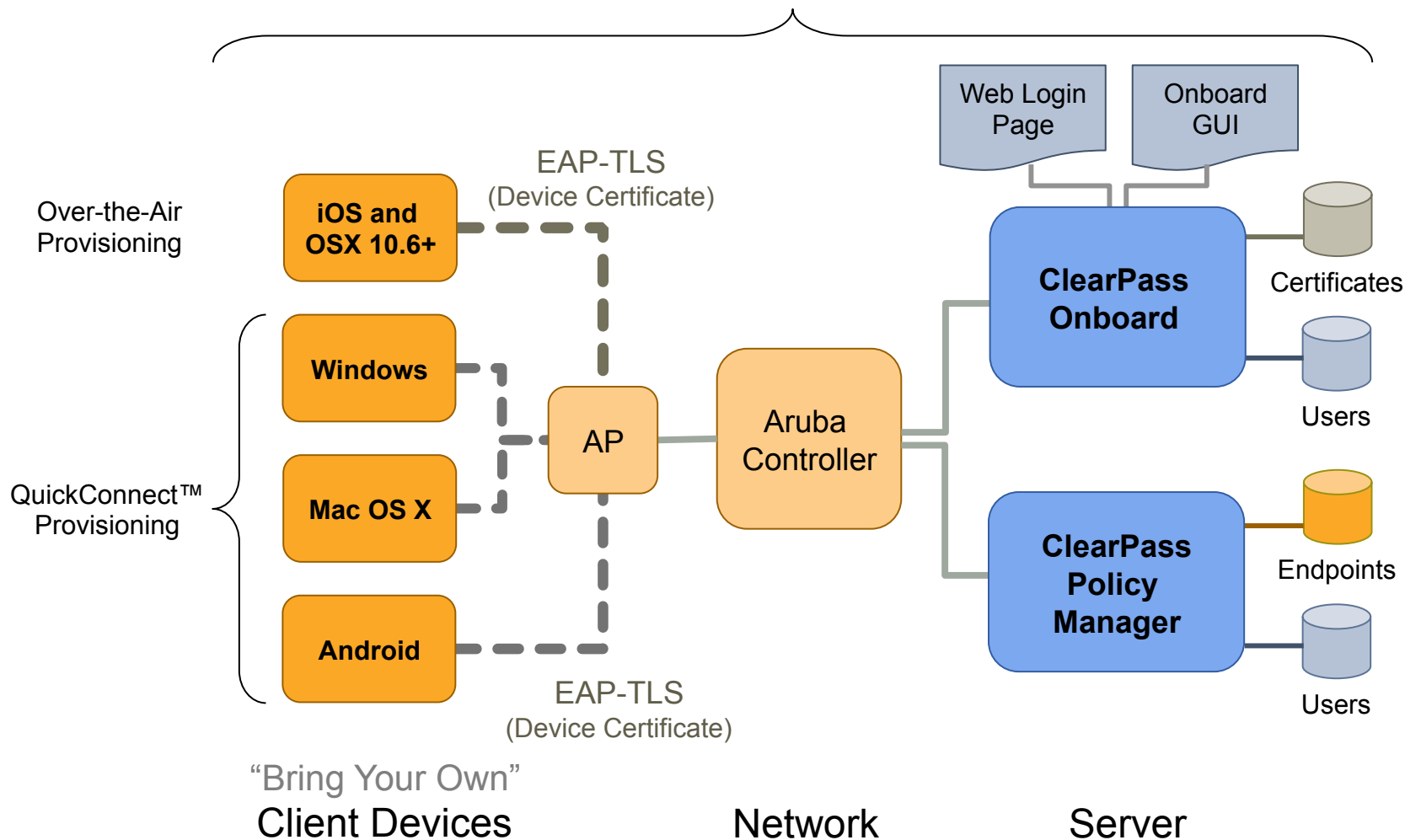
# Deployment Architecture



# Detailed Architecture



## Onboard Workflow

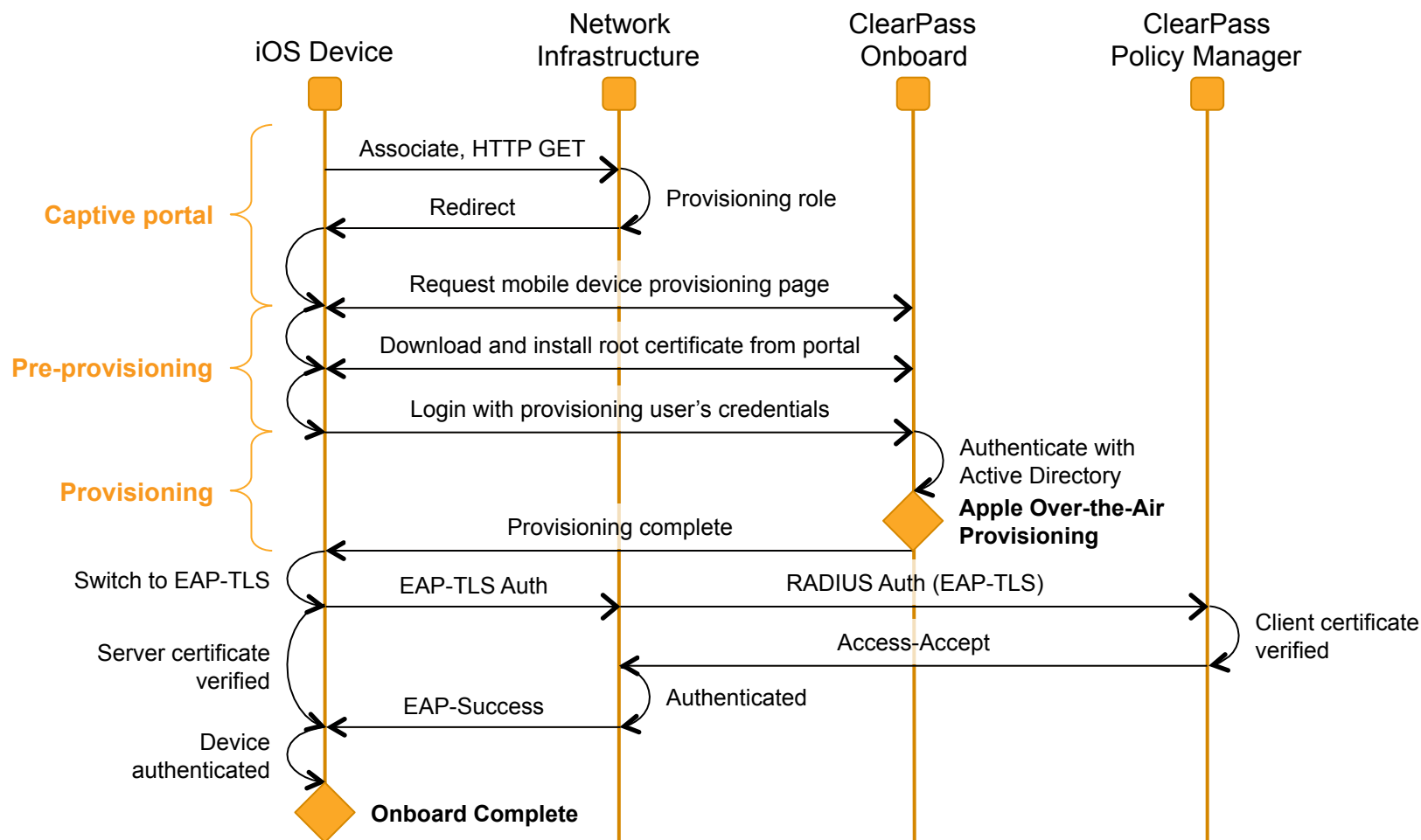




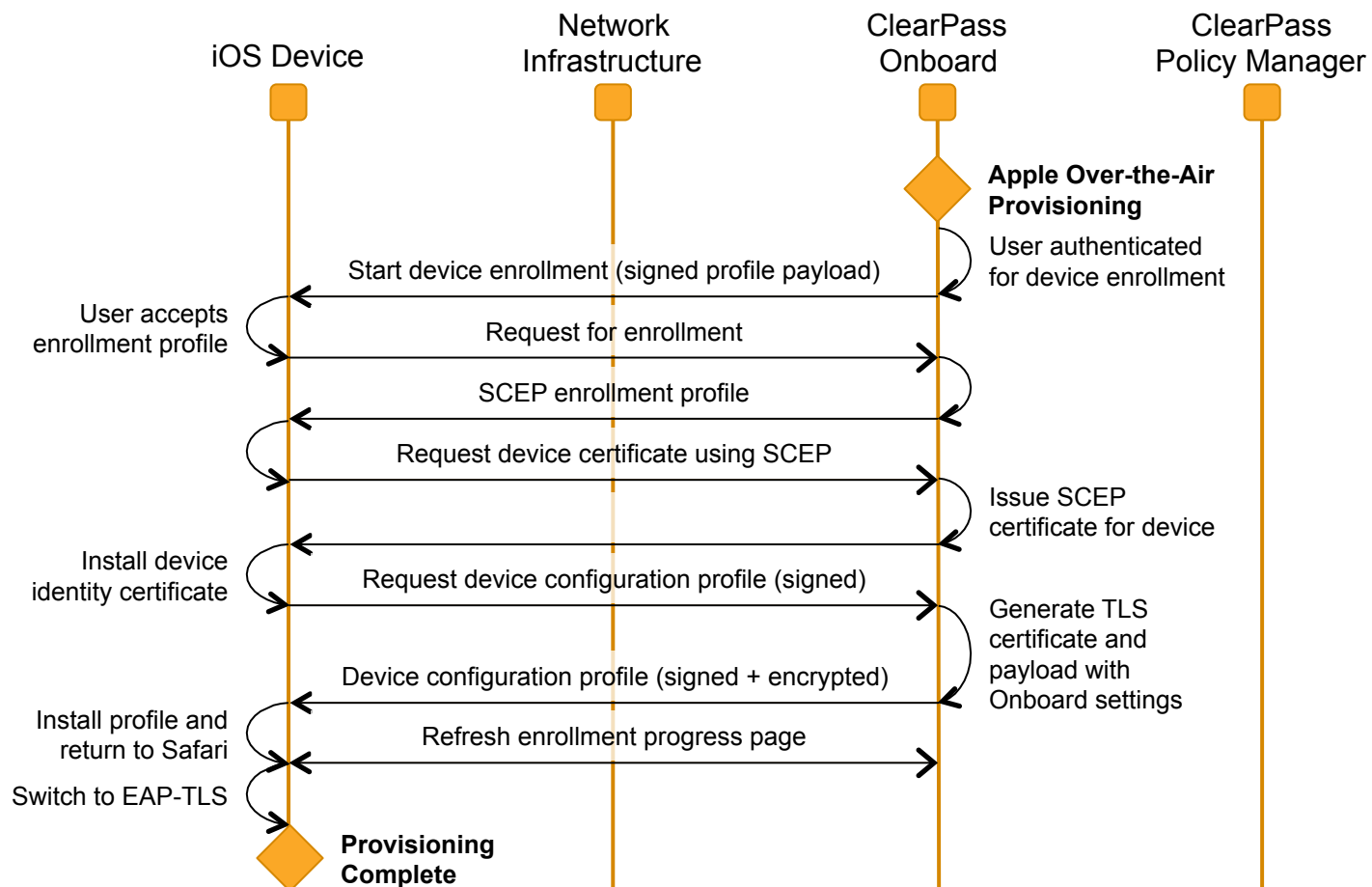
# Onboard Workflow – iOS & OS X



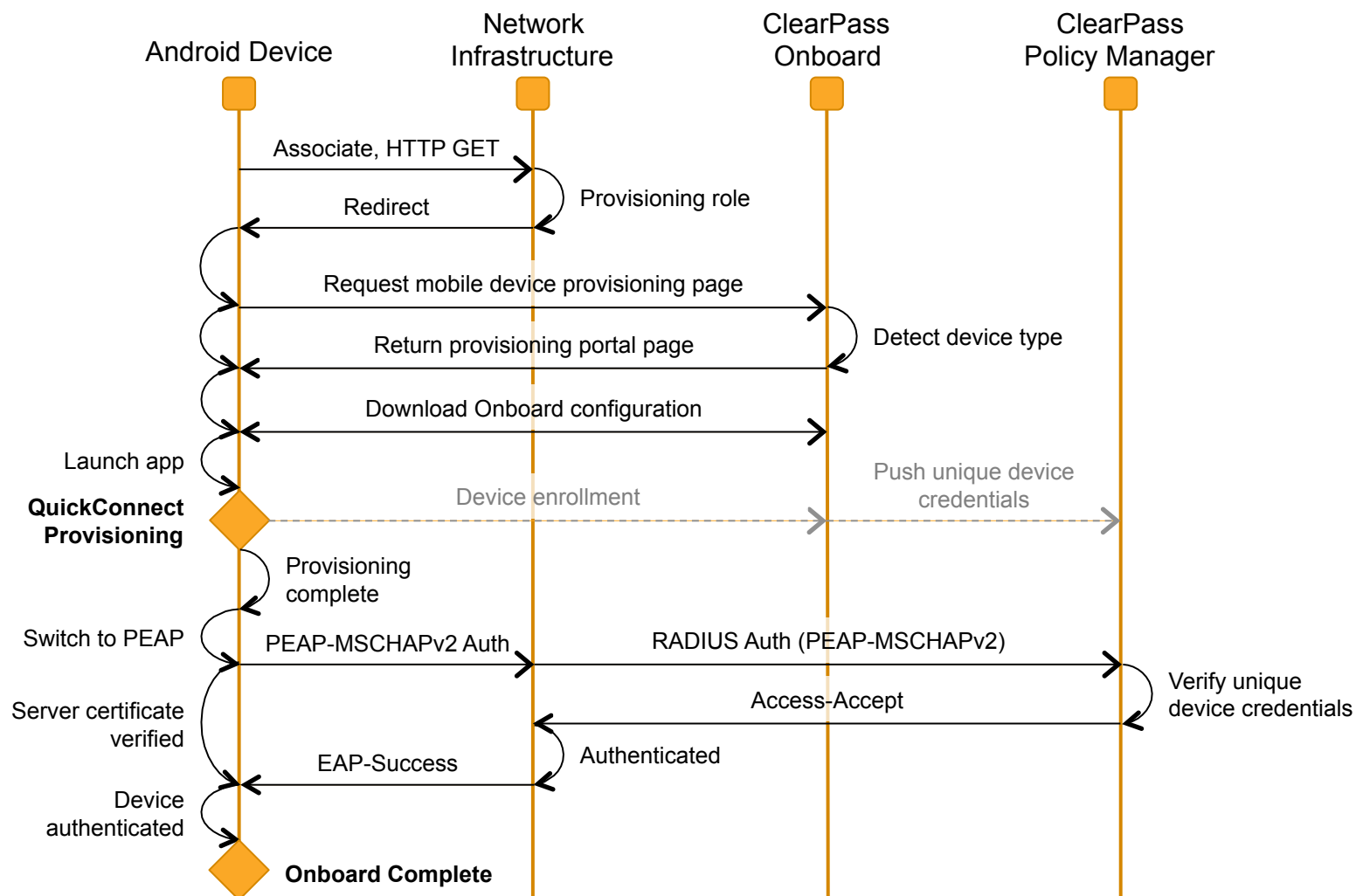
iOS



# iOS “Over-the-Air Provisioning”



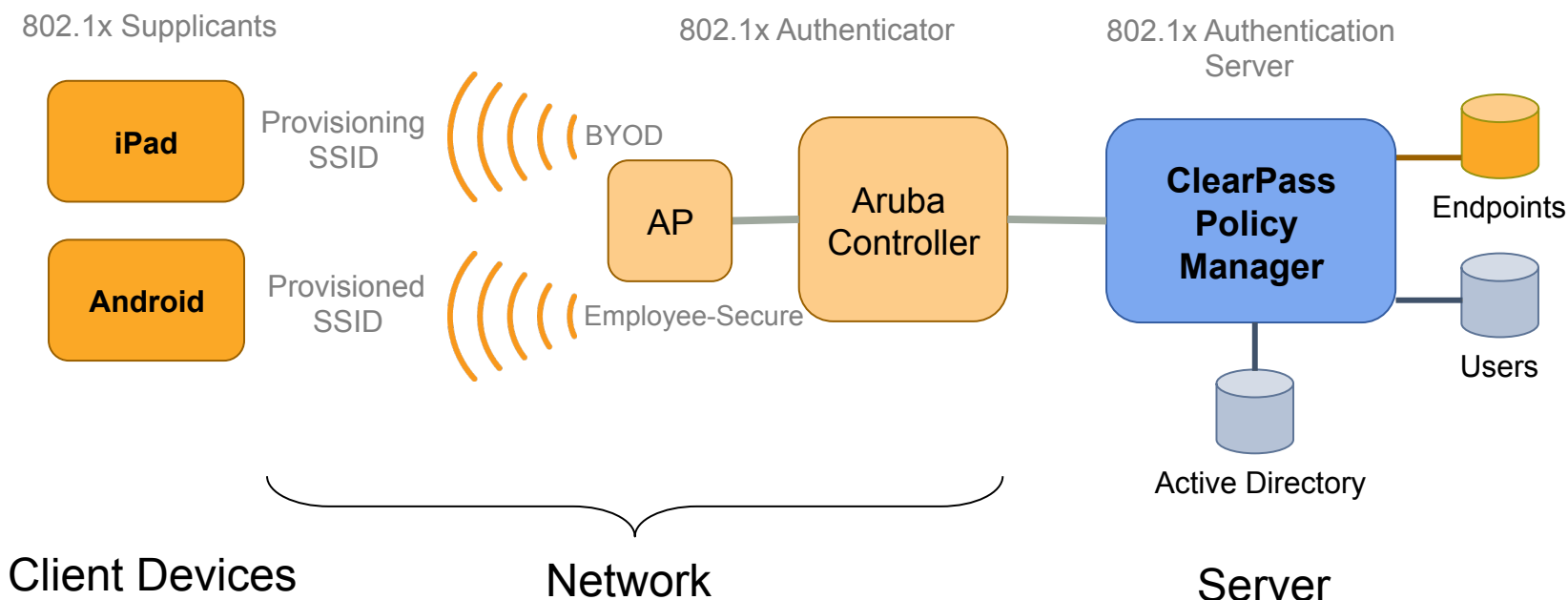
# Onboard Workflow – other OS's



# Onboarding Deployment Options



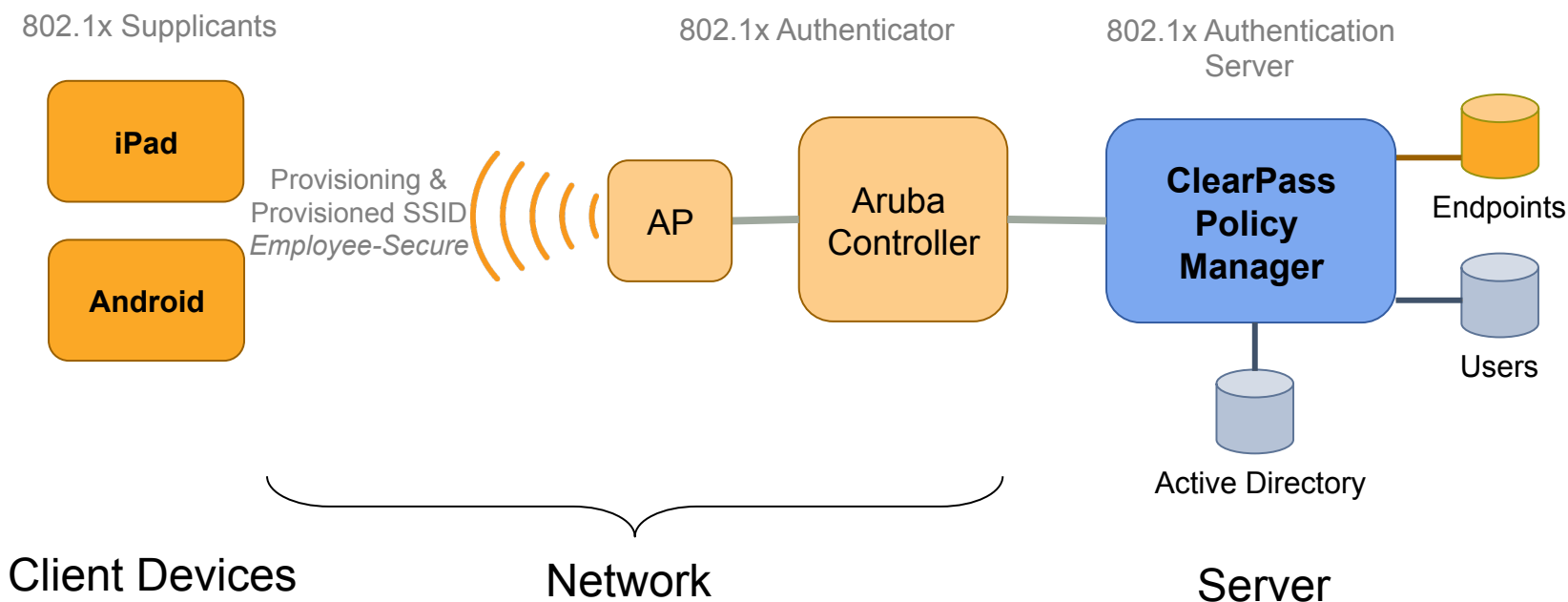
- **Different SSID for Provisioning & Provisioned**
  - Standalone SSID
  - Linked from Guest Access Portal



# Onboarding Deployment Options



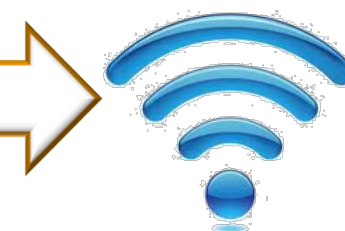
- **Same SSID for Provisioning & Provisioned**
  - Device Profiling
  - Lack of provisioning credential
  - MDM integration



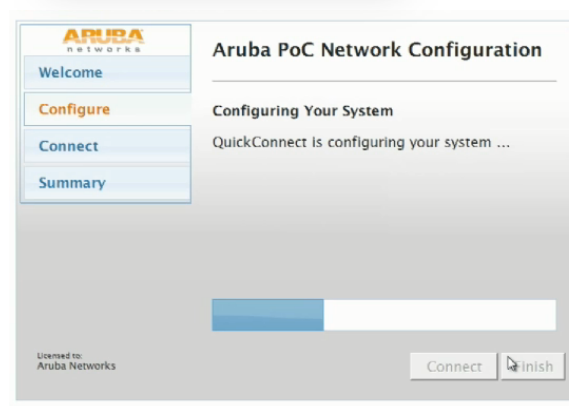
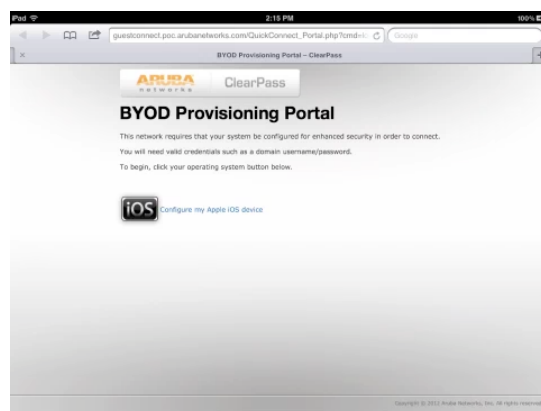
# Onboarding Workflow



1. Device type automatically detected & redirected to portal
2. Settings & credentials are auto-configured after user enters domain credentials
3. User automatically placed on proper SSID & network segment



**SSID = EnterpriseWPA2**





# Detecting BYO Devices



# Power of context aware policies



- **No longer a binary decision**
- **Leverage context sources to determine enforcement**
  - Active Directory Group Membership
  - Machine authentication for domain joined devices
  - Device Type / Posture of the device
  - Managed by MDM / context from MDM
  - Lack of provisioned credential
- **Differentiate Corporate Managed / Provisioned devices**
  - Enforce Machine Authentication differently
  - Enforce MDM managed differently
  - Enforce Onboard provisioning differently
  - Redirect unmanaged / un-provisioned device to provisioning workflow (for example – only using PEAP AD credentials)

# Sources of Profile Data



- **Native**
  - MAC OUI
  - HTTP User Agent (Captive Portal Services)
  - Onboard (explicit knowledge from client OS interactions)
  - OnGuard (explicit knowledge from client OS interactions)
- **Network Sourced**
  - DHCP Option fingerprinting (DHCP relay)
  - Subnet scan with SNMP profiling (CDP, LLDP, sysDescr)
  - AOS Controller 6.3 export (DHCP, HTTP, mDNS)
- **Agent / Server Integration**
  - MS Exchange (Active-Sync device type)
  - MDM Deployments
- **Fingerprints updated automatically over the net**

# Sample Profile Dashboard



## Endpoint Profiler

[Change View](#)

**4203** Total Devices   **1405(33%)** Smartdevices   **2240(53%)** Computers   **558(13%)** Unmanaged Devices

### Device Category

Network Boot Agents (14)  
Game Console (4)  
Storage Device (4)  
SmartDevice (1405)



Switch   Unknown   Network Boot Agents  
Game Console   Storage Device  
SmartDevice   Access Points   Computer  
Printer   Routers   VoIP Phone

### Device Family

Windows (15)  
Symbian (4)  
Android (271)  
BlackBerry (23)



Windows   Symbian   Android  
BlackBerry   Apple   Nokia

### Device Name

Sony Ericsson Android (3)  
Samsung Android (99)  
Android (72)  
HTC Android (53)



Sony Ericsson Android   Samsung Android  
Android   HTC Android   Motorola Android  
AsusTek Android

[Change Selection](#)

#	<input type="checkbox"/>	MAC Address ▲	Hostname	Category	OS Family	Status
1.	<input type="checkbox"/>	3017c86ddda1	android_3232aa1d87622f1b	SmartDevice	Android	Unknown
2.	<input type="checkbox"/>	303926484cd0	android-aa795437ef828c40	SmartDevice	Android	Unknown
3.	<input type="checkbox"/>	8c6422b4c278	android_2fc3945cf56a0c61	SmartDevice	Android	Unknown

Showing 1-3 of 3

# Example Enforcement Policy



Configuration » Enforcement » Policies » Edit - BYOD Enforcement Policy

## Enforcement Policies - BYOD Enforcement Policy

Summary Enforcement **Rules**

Rules Evaluation Algorithm: ☒ Select first match ☐ Select all matches

Enforcement Policy Rules:

Conditions	Actions
1. (Endpoint:Compromised EQUALS True)	Jailbreak-Portal
2. (Endpoint:MDM Enabled EQUALS true)	MDM Access Zone
3. (Endpoint:Ownership EQUALS Corporate)	Corporate-Issued Access Zone
4. (Endpoint:Ownership EQUALS Employee)	Employee-Owned Access Zone

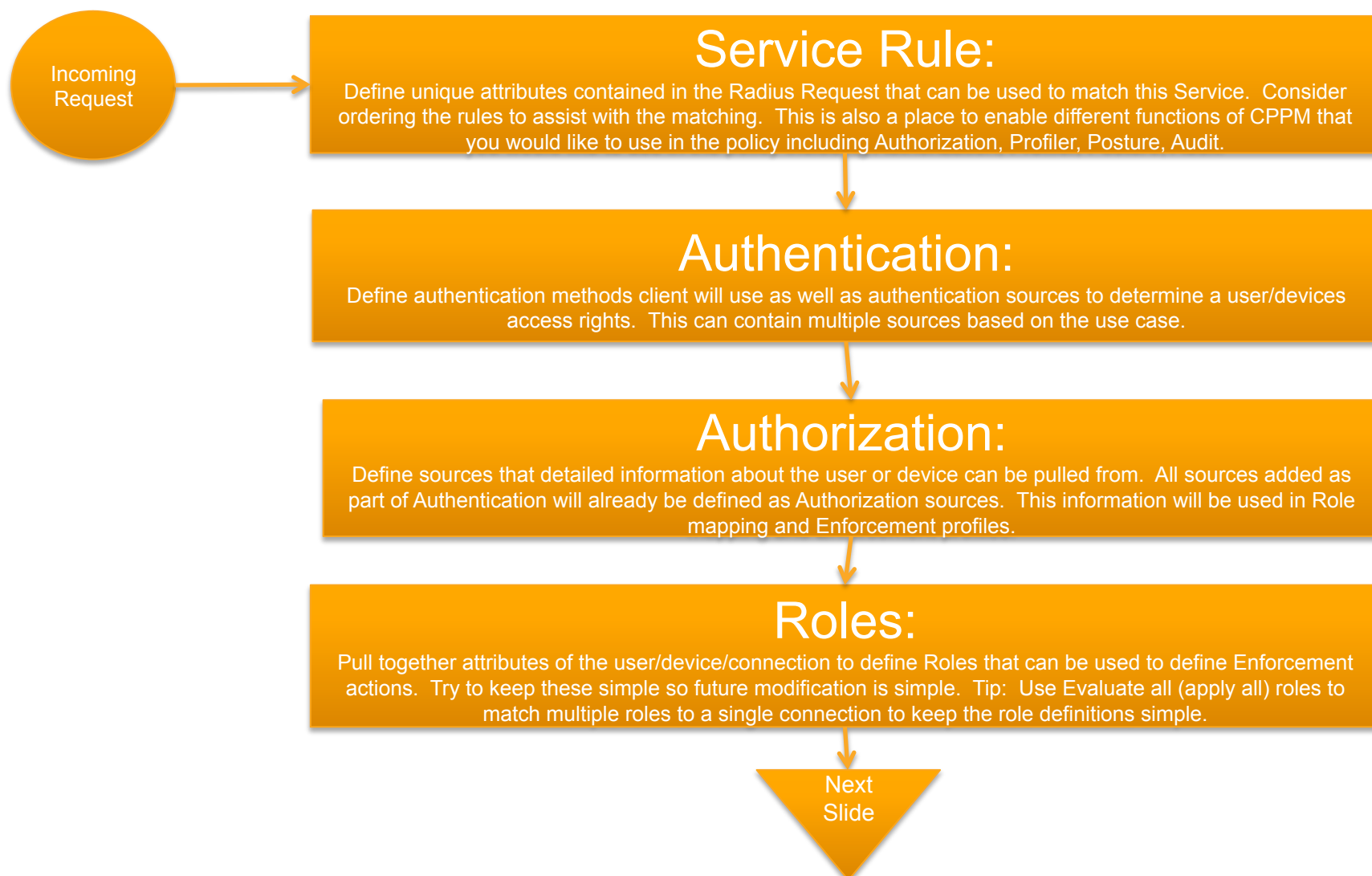
**Rules Editor**

Conditions

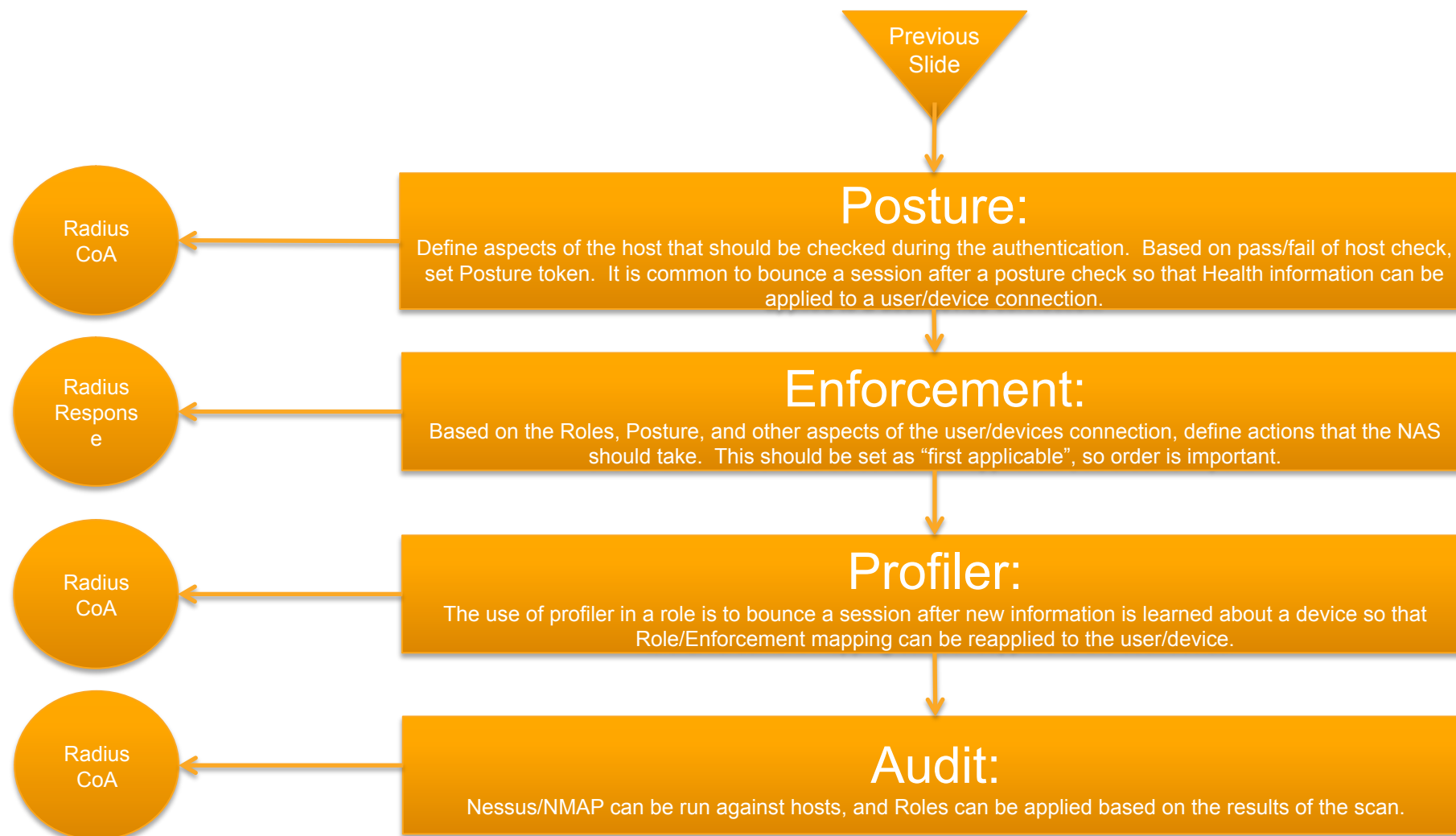
Match ALL of the following conditions:

Type	Name	Operator	Value	
1. Endpoint	Device Name	EQUALS	HTC PH39100	
2.	Click to add...			

# Service Definition workflow



# Service Definition workflow





# MDM Integration



# Managing Mobility

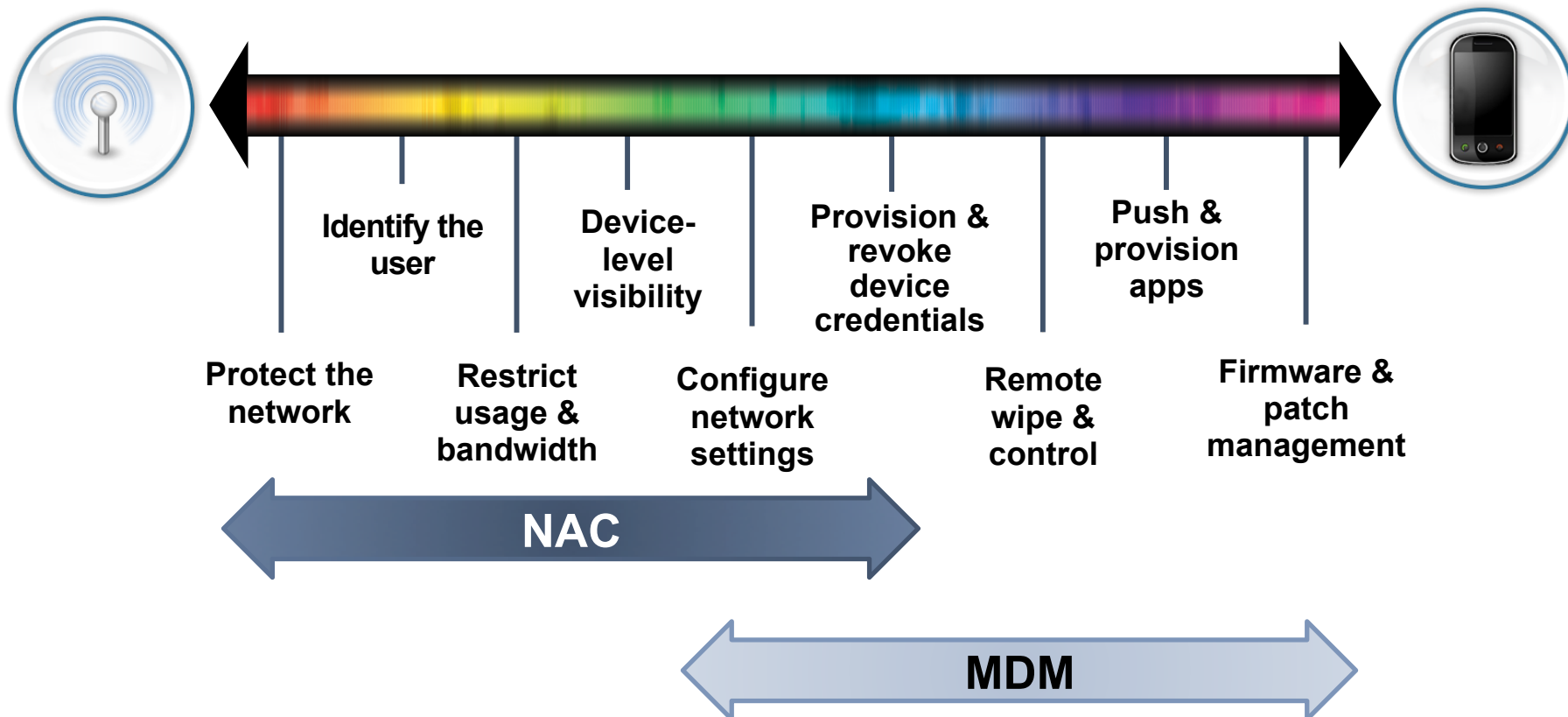


## Network Infrastructure

Data in motion

## Device Management

Data at rest



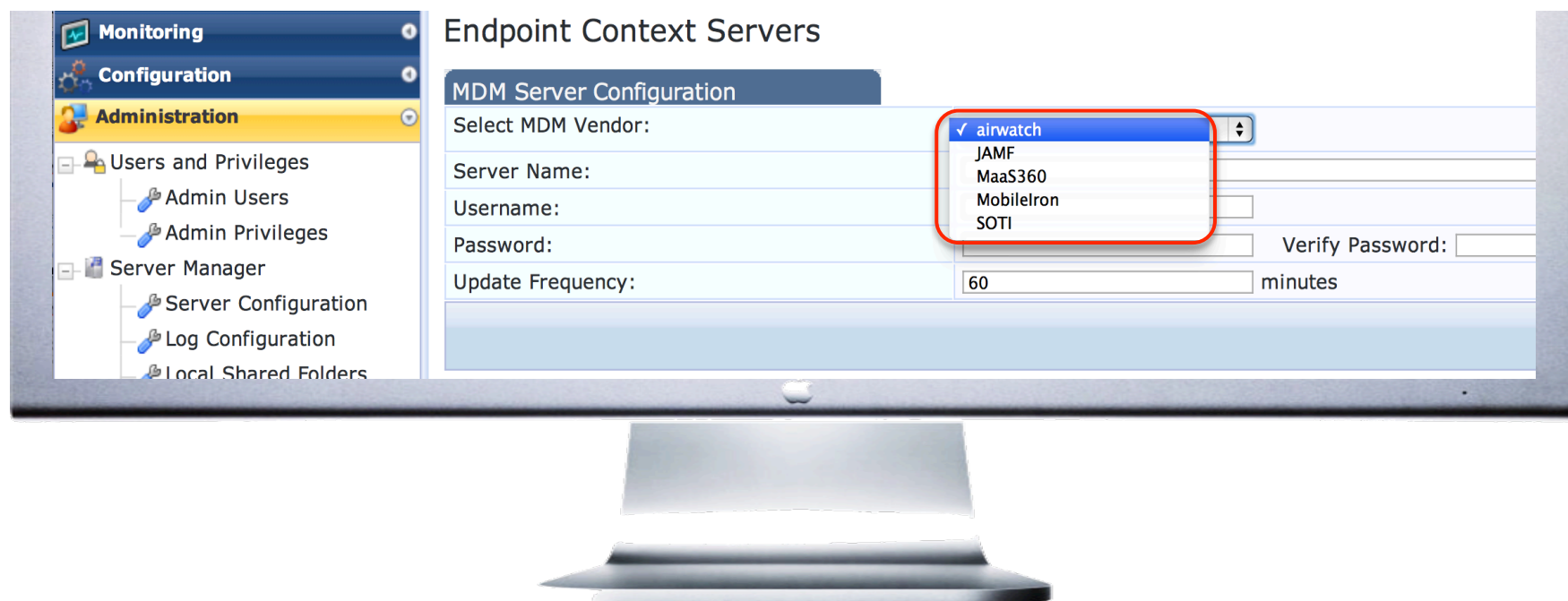
# Integrating Leading MDM Vendors



- ClearPass uses public APIs for:



- Normalize MDM endpoint data across vendors



# Mutually Leverage Context



## Network Policies

- Firewall Policies
- Redirect to enroll
- Quarantine devices
- Bandwidth Prioritization

Exchange endpoint  
context & trigger  
policies



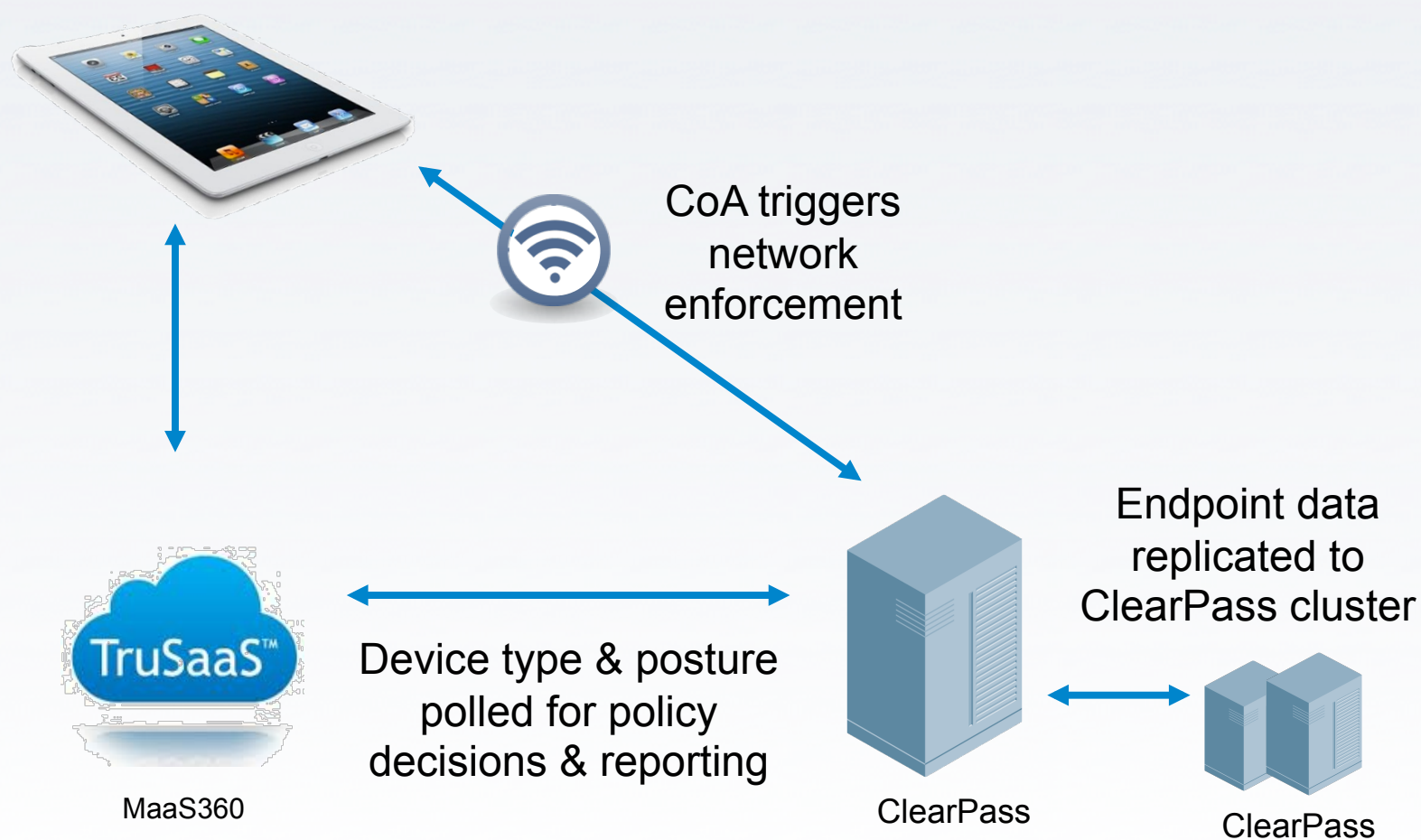
## Device Policies

- Device restrictions
- Remote Lock & Wipe
- Install Application
- Black list Apps

# ClearPass MDM Integration



## Using MDM device information for Policy



# Use MDM Attributes for Network Policy



## MDM Attributes



### Inventory

<b>Manufacturer:</b>	Apple
<b>Model:</b>	iPad2
<b>OS Version:</b>	iOS 6.1
<b>UDID</b>	1730235f564094186
<b>Serial Number</b>	79049XXXA4S
<b>IMEI</b>	012416009780168
<b>Phone Number</b>	408-534-2819
<b>Carrier</b>	Verizon
<b>MDM Id</b>	130d0f992t34
<b>Owner</b>	jhoward
<b>Display Name</b>	John Howard
<b>Ownership</b>	Employee Liable

### Posture

<b>MDM Enabled</b>	Yes
<b>Compromised</b>	Not Jailbroken
<b>Encryption Enabled</b>	Yes
<b>Blacklisted Apps</b>	No
<b>Required Apps</b>	Yes
<b>Last Check in</b>	01/30/2012 9:03am

# Setting Network Policy



## Policy Example

Permit / Deny / Whitelist / Blacklist / Remediate / Quarantine / Redirect / Role-based Security / Bandwidth Mgmt / Optimize Multimedia

Use context from ClearPass + MDM to set network policy



### WHO

- User/group membership



### WHAT

- Device Profile
- OS version
- Endpoint health
- Jailbreak status
- Pincode/encryption



### WHEN

- Time/Date
- eg. in semester



### WHERE

- Location
- Trusted or untrusted network



### HOW

- Application installed
- blacklisted

# Integrated User Onboarding

## Provisioning Workflow



Detect un-enrolled device connected to the network



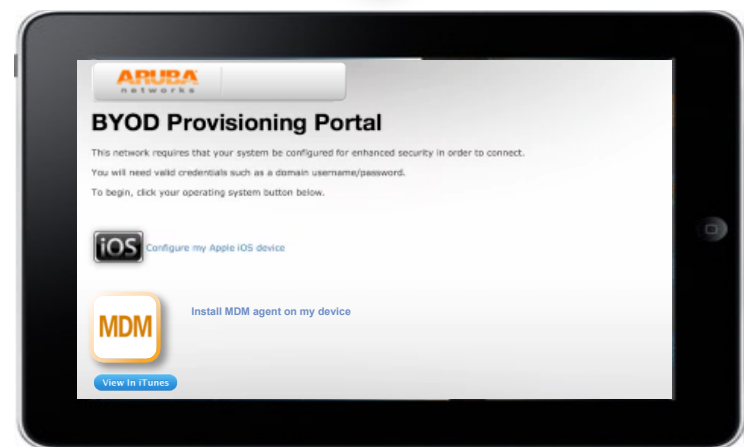
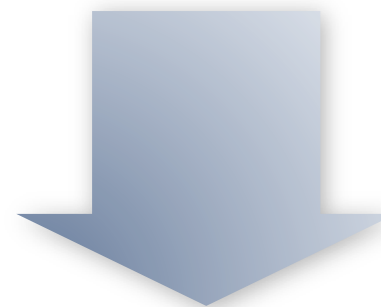
Redirect to MDM self-service portal

*or*

Prompt user to download MDM agent



Host MDM application, from network captive portal







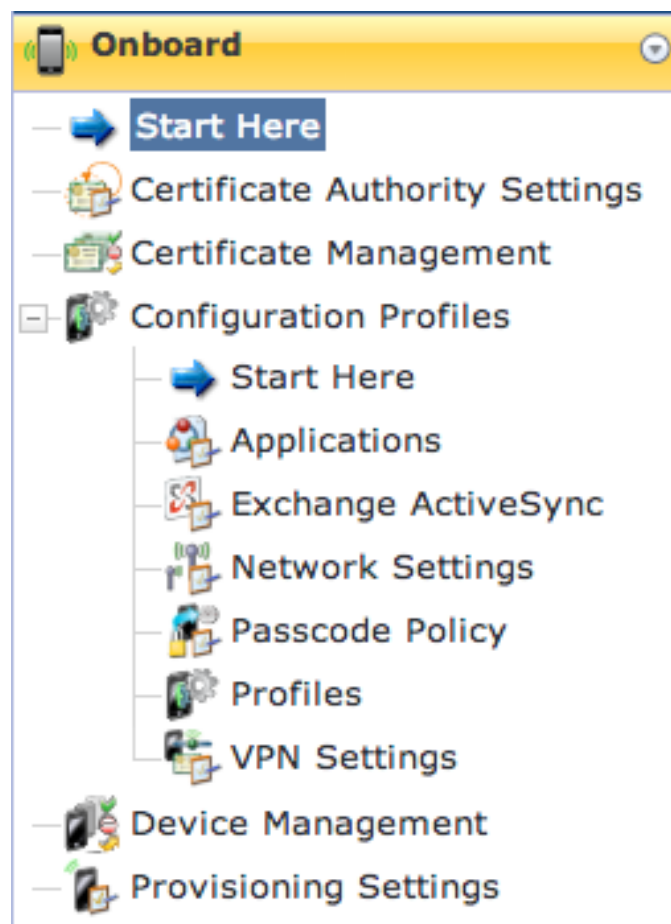
# Onboard Setup

# Certificate Authority Setup



- **TLS client certificate provisioned per device**
- **Onboard using built in CA**
  - Act as standalone Root CA
  - Integrate with existing PKI as Intermediate CA
  - SCEP Proxy options coming soon
- **Certificates replicated throughout cluster**
  - Onboard proxied to publisher node (http proxy)
  - Proxy process transparent to client device
  - Client certificates available on replicated to subscribers
- **OSCP Responder available from subscribers**
  - Locally check for revocation of client certificates
  - OSCP configured to override to localhost

# Configuring Onboard - Walkthrough



## Securing Enterprise Networks

Use the commands below to manage and provision your network's mobile devices.



### Device Management

Manage Onboard devices and control access to the network.



### Certificate Management

Create, view, and revoke digital certificates for devices, servers, and certificate authorities.

## Settings



### Provisioning Settings

Configure basic settings for device provisioning.



### Certificate Authority Settings

Configure the certificate authority that will be used to issue digital certificates to devices.



### Configuration Profiles

Configure the profile settings that will be provisioned to devices.



[Back to main](#)

## CPPM Demo Server



# Troubleshooting

# Managing client certificates



Use this list view to manage ClearPass Onboard certificates.

Quick Help

Columns

Filter:

Common Name	Serial Number	Type	Valid From	Valid To	Device Type
ClearPass Onboard Local Certificate Authority	1	ca	2013-02-19 13:00:30+00	2023-02-20 13:30:30+00	None
ClearPass Onboard Local Certificate Authority (Signing)	2	ca	2013-02-19 13:00:30+00	2023-02-20 13:30:30+00	None
CPPM	0x00ab1dc496458eb9c5	trusted	2013-02-20 05:24:36+00	2014-02-20 05:24:36+00	None
cppm.tsn.arubanetworks.com	61	trusted	2013-03-10 16:39:13+00	2014-03-10 17:09:13+00	None
Device Enrollment (Profile Signing)	3	profile-signing	2013-02-19 13:00:30+00	2023-02-20 13:30:30+00	None
djump@arubanetworks.com	88	tls-client	2013-03-11 17:50:45+00	2013-03-18 18:20:07+00	OS X
dlm@cmu.edu	138	tls-client	2013-03-13 15:15:20+00	2013-03-20 15:44:07+00	OS X
<a href="#">View certificate</a> <a href="#">Export certificate</a> <a href="#">Revoke certificate</a> <a href="#">Delete certificate</a>					
efishel@arubanetworks.com	91	tls-client	2013-03-11 18:21:49+00	2013-03-18 18:46:28+00	Windows 7 Service Pack 1
ggermain@arubanetworks.com	70	tls-client	2013-03-11 14:30:36+00	2013-03-18 15:00:26+00	OS X
ggermain@arubanetworks.com	115	tls-client	2013-03-12 22:15:31+00	2013-03-19 22:45:22+00	iOS

Refresh

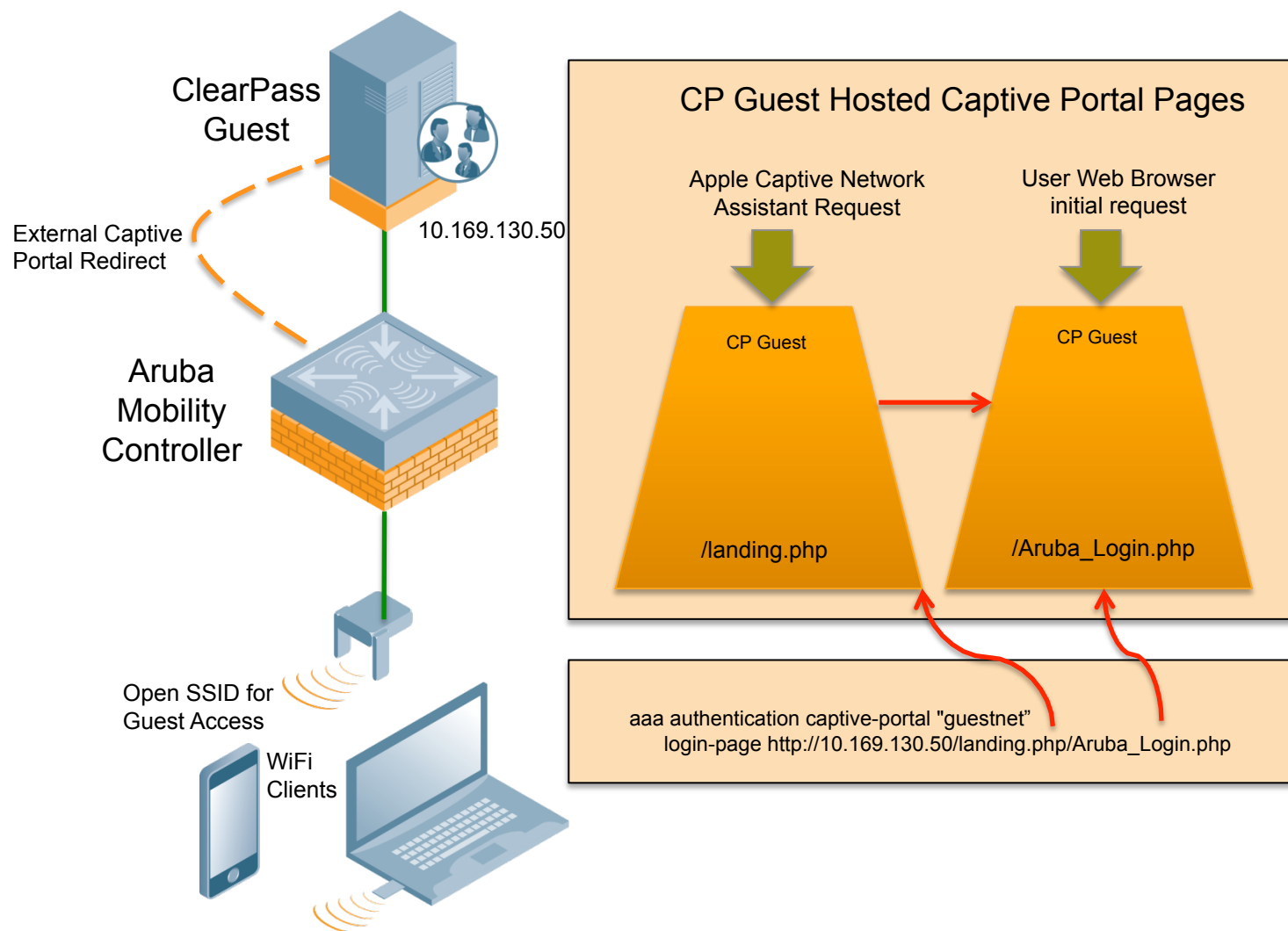
12345

Showing 1 – 10 of 45

10 rows per page

- Revoke/Delete client certificates
- Quick search to find specific users/devices

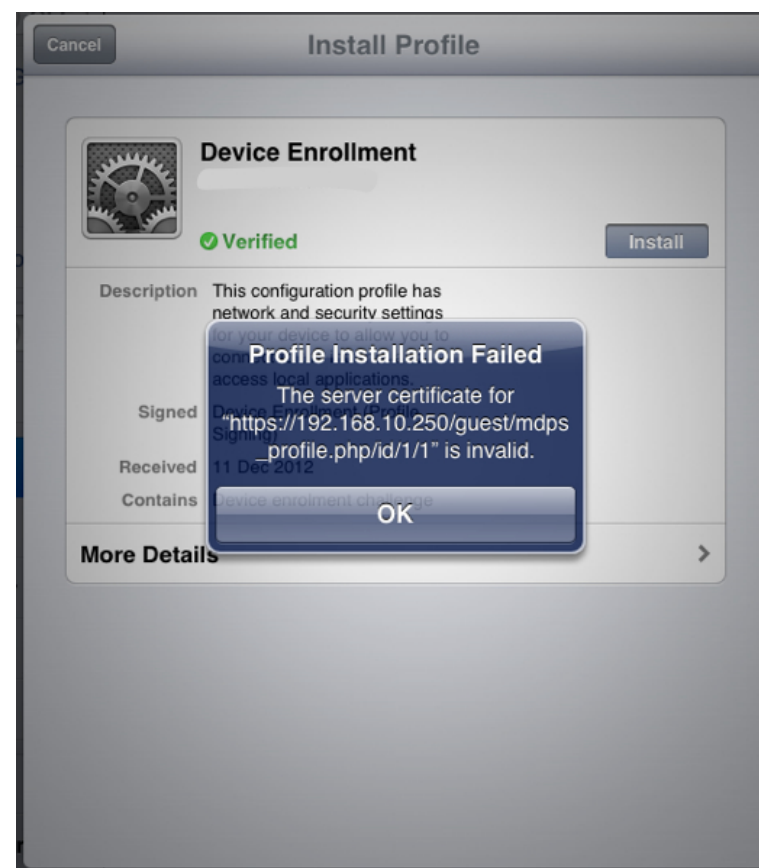
# Apple Captive Network Assistant



# Invalid Profile when Onboarding



- **iOS expects to trust the web server hosting the profiles being pushed**
- **Multiple options to resolve**
  - Use HTTP if using L2 WiFi encryption
  - Install publically signed web server cert
  - Sign web server cert from Onboard CA
- **Its all about iOS server trust**





# Q&A





# **The Airheads Challenge**

## **Use Unlock Code “ONBOARD”**

### **To get the quiz for this session**

**Login to play at  
[community.arubanetworks.com](http://community.arubanetworks.com)**



Thank You



# AIRHEADS

## LAS VEGAS 2013

**JOIN:** [community.arubanetworks.com](http://community.arubanetworks.com)

**FOLLOW:** [@arubanetworks](https://twitter.com/arubanetworks)

**DISCUSS:** [#airheadsconf](https://twitter.com/airheadsconf)