

HERE'S YOUR FREE INSTANT AP. TAKE A TEST DRIVE!

(Start on next page)



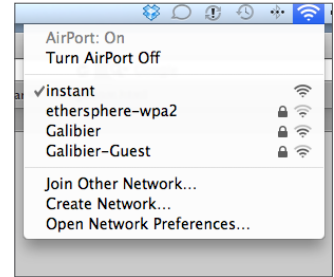
Enterprise Wi-Fi in less than five minutes

- No software or service licenses
- Impressive scalability
- Enterprise-grade security

ARUBA[®]
networks

Aruba Instant combines enterprise-class Wi-Fi with unmatched affordability and simplicity. Test drive this now then let us show you the potential of Aruba Instant. **Schedule a demo with an Aruba representative and our team will show: Virtual Controller Mesh capabilities, Advanced security features, Airwave Network Management, and OpenDNS integration. Call 866-552-7822.**

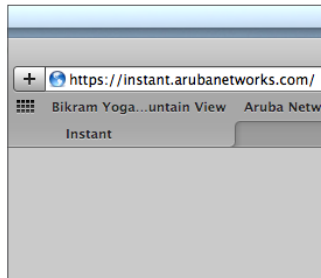
Getting Started with Aruba Instant



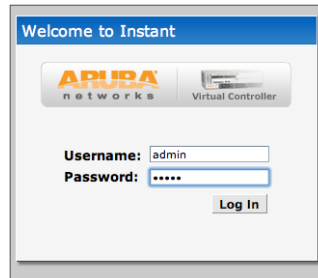
Step 1: Remove Instant AP from packaging and plug-in AC Adapter and Ethernet cable to ENET port

Step 2: Once the front 11A/N or 11B/G/N LED lights turn green, The Instant AP is ready to be set up (about 20-30 seconds)

Step 3: Connect to the **instant** SSID once it appears under the Airport Icon (for Mac OS X) or Wireless Network Settings (for Windows).



Step 4: Open your browser and type in <https://instant.arubanetworks.com>



Step 5: Enter **admin** for both Username and Password.

Four Steps to EMPLOYEE Wi-Fi

New Network

1 Basic Info 2 VLAN 3 Security 4 Access Help

Basic Information

Name (SSID):

Primary usage: ☒ Employee
☐ Voice
☐ Guest

Content filtering:

Hide SSID: ☐

Client IP & VLAN Assignment

Client IP assignment: ☐ Virtual Controller assigned
☒ Network assigned

Client VLAN assignment: ☒ Default
☐ Static
☐ Dynamic

[Show advanced options](#) Next Cancel

Step 1: Click **New** to create Wi-Fi network and give it a name. Choose **Employee** as the primary usage and keep the default setting to allow the network to assign the IP address.

New Network

1 Basic Info 2 VLAN 3 Security 4 Access Help

Security Level

More Secure
Enterprise
Personal
Open
Less Secure

Key management:

Passphrase format:

Passphrase:

Retype:

MAC authentication:

Back Next Cancel

Step 2 : Next select **Security Levels** for your network. In this example we will add WPA-2 Personal encryption and an alpha passphrase. The Enterprise level security requires an external RADIUS server.

New Network

1 Basic Info 2 VLAN 3 Security 4 Access Help

Access Rules

More Control
Role-based
Network-based
Unrestricted
Less Control

No restrictions on access based on destination or type of traffic

Back Finish Cancel

Step 3 : With Instant AP you can create access control policies to restrict users by role or network-based protocols such as FTP, HTTP, ICMP and more. In this example we will give employees unrestricted access to the network.

ARUPA networks Virtual Controller **Instant-CD:B7:42**

| 1 Network | | 1 Access Point | |
|---------------------|---------|-------------------|---------|
| Name | Clients | Name | Clients |
| ACME | 1 | d8:c7:c8:cd:b7:42 | 1 |
| New | | | |

Step 4: Click **Finish** and you have just configured an enterprise Wi-Fi network for your organization. You can now go back to edit any of your settings to fine tune security and access control policies.

Four Steps to GUEST Wi-Fi

New Network

1 Basic Info 2 VLAN 3 Security 4 Access

Basic Information

Name (SSID):

Primary usage: ☐ Employee ☐ Voice ☒ Guest

Content filtering:

Hide SSID: ☐

Band:

Inactivity timeout: secs

Bandwidth Limits:

☒ Percentage of Airtime: %

☒ Each user: kbps

☐ Each radio

Broadcast/Multicast:

Multicast optimization:

Broadcast filtering:

DTIM interval:

Transmit Rates:

2.4GHz: Min: Max:

5GHz: Min: Max:

Client IP & VLAN Assignment

Client IP assignment: ☒ Virtual Controller assigned ☐ Network assigned

Next Cancel

Step 1: Click **New** to create new guest subnet and give it a name. Choose **Guest** as the primary usage. Click the **Show Advanced Options** link in the lower left corner. Instant APs allow you to restrict bandwidth on your Guest Wi-Fi. In this example guest devices are limited to 20% of the airtime and each user is capped at 1.5 Mbps. Click **Next** and keep the default setting to allow IP assignment by Virtual Controller and Click **Next** again.

New Network

1 Basic Info 2 VLAN 3 Security 4 Access

Security Level

Splash page type:

Encryption:

Splash Page Visuals

Welcome to the Guest Network.

Click thumbnail above to edit [Preview](#)

Back Next Cancel

Step 2: Next create a Captive Portal Page to log or authenticate guest users. In this example we select **Internal-Acknowledge** to only log guest user activity and not require guests to have an account. Guests just need to provide their email address and agree to the terms and conditions.

New Network

1 Basic Info 2 VLAN 3 Security 4 Access

Access Rules

More Control

Role-based

Network-based

Unrestricted

Less Control

Access Rules (5)

- Allow dhcp to all destinations
- Allow dns to all destinations
- Allow https to all destinations
- Allow http to all destinations
- Deny any to all destinations

New Edit Delete

Note that the rule list is ordered -- use the arrow buttons to move the selected rule up or down

Back Finish Cancel

Step 3: The last step is to create a Guest Wi-Fi access control policy. Click **New** to add a new rule. In this example we are limiting guests to internet access by allowing (HTTP, HTTPS and DNS) and denying access to everything else.

ARUBA networks

Virtual Controller

Instant-CD:B7:42

2 Networks

| Name | Clients |
|------------|---------|
| ACME | 1 |
| ACME-GUEST | 0 |

1 Access Point

| Name | Clients |
|-------------------|---------|
| d8:c7:c8:cd:b7:42 | 1 |

Step 4: Click **Finish** and you have just created a Guest Wi-Fi network with policies in place to limit guests to Internet access only.