



ARUBA '22 BALTIC DAY

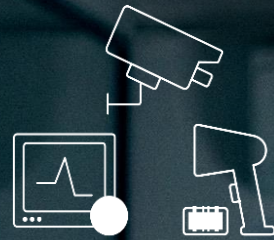
SOLVING NETWORK MODERNIZATION CHALLENGES

Dobias van Ingen
Aruba EMEA CTO & Sr. SE Director

YOUR **PAIN** POINTS



Hybrid Work



Digital Transformation
Acceleration



Personalized
Experiences



Need for
Efficiencies



THE FUTURE IS EDGE-TO-CLOUD

INTELLIGENT EDGE

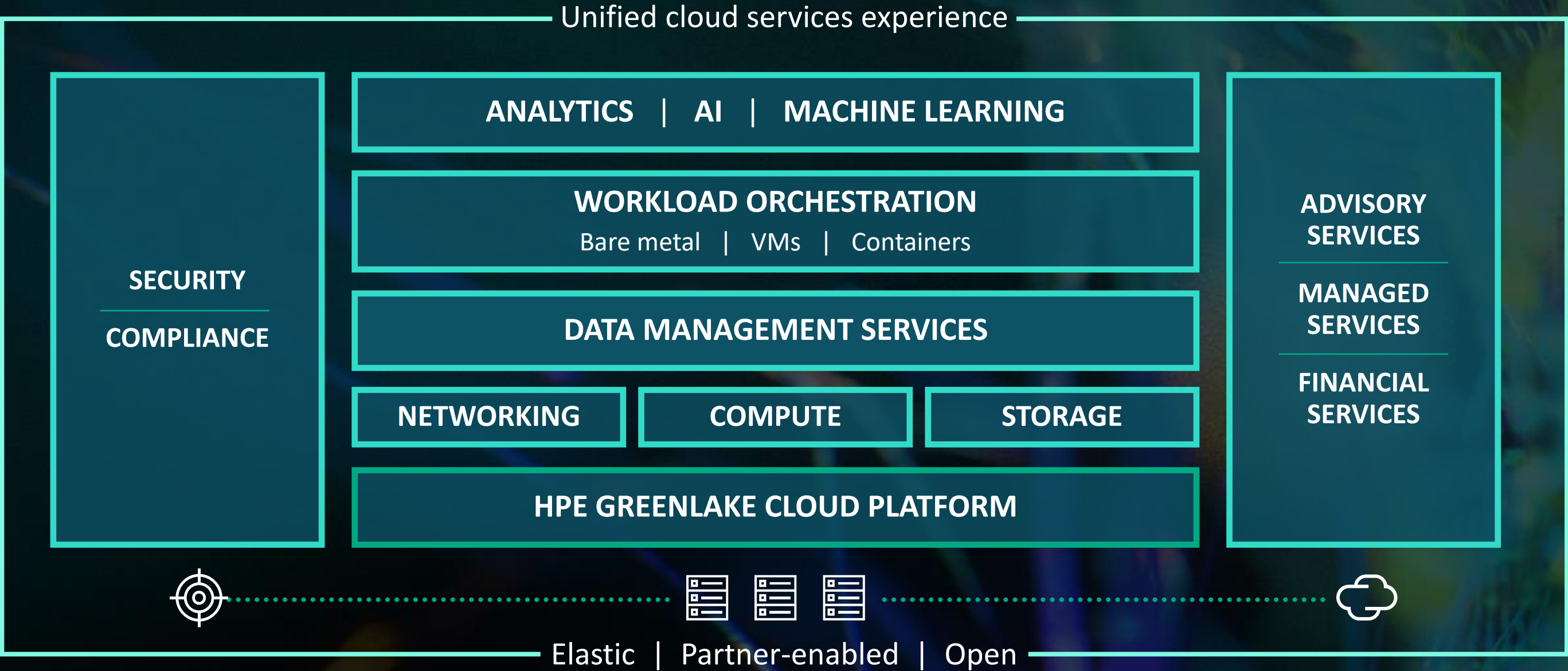
HYBRID CLOUD



**WAN AND SECURITY
TRANSFORMATION**

HPE GREENLAKE

Edge-to-cloud platform



ARUBA FRAMEWORK

INTELLIGENT EDGE

HYBRID CLOUD



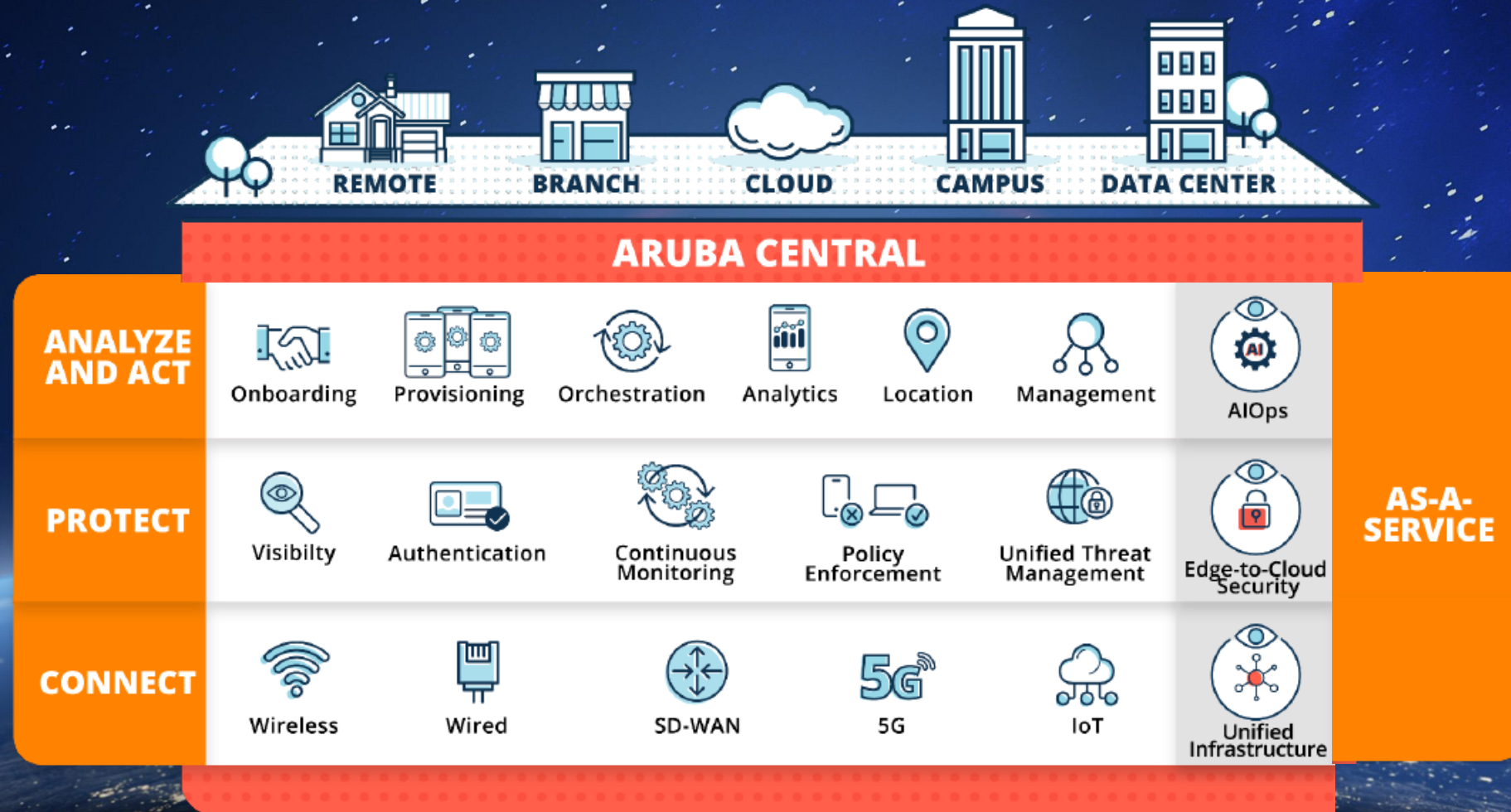
CONNECT

PROTECT

ANALYZE

ACT

ARUBA ESP SOLUTIONS FOR NETWORK MODERNIZATION



aruba

a Hewlett Packard
Enterprise company

UNIFIED INFRASTRUCTURE CONNECT



aruba



First Enterprise grade 6E to market

Great for high density

Building out full portfolio

Already looking to the future



ARUBA NETWORKS

IoT APPROACH



BLE



ZIGBEE



3RD PARTY



SOON



USB 4G LTE MODEM

ARUBA ECOSYSTEM PARTNERS



ses imagotag

SOLUM
Solution provider.

HermanMiller



EnOcean

ASSA ABLOY **SIEMENS** SpaceIQ

ABB Wiliot **CTD**



GE Healthcare

STANLEY.
Healthcare

HYPROS

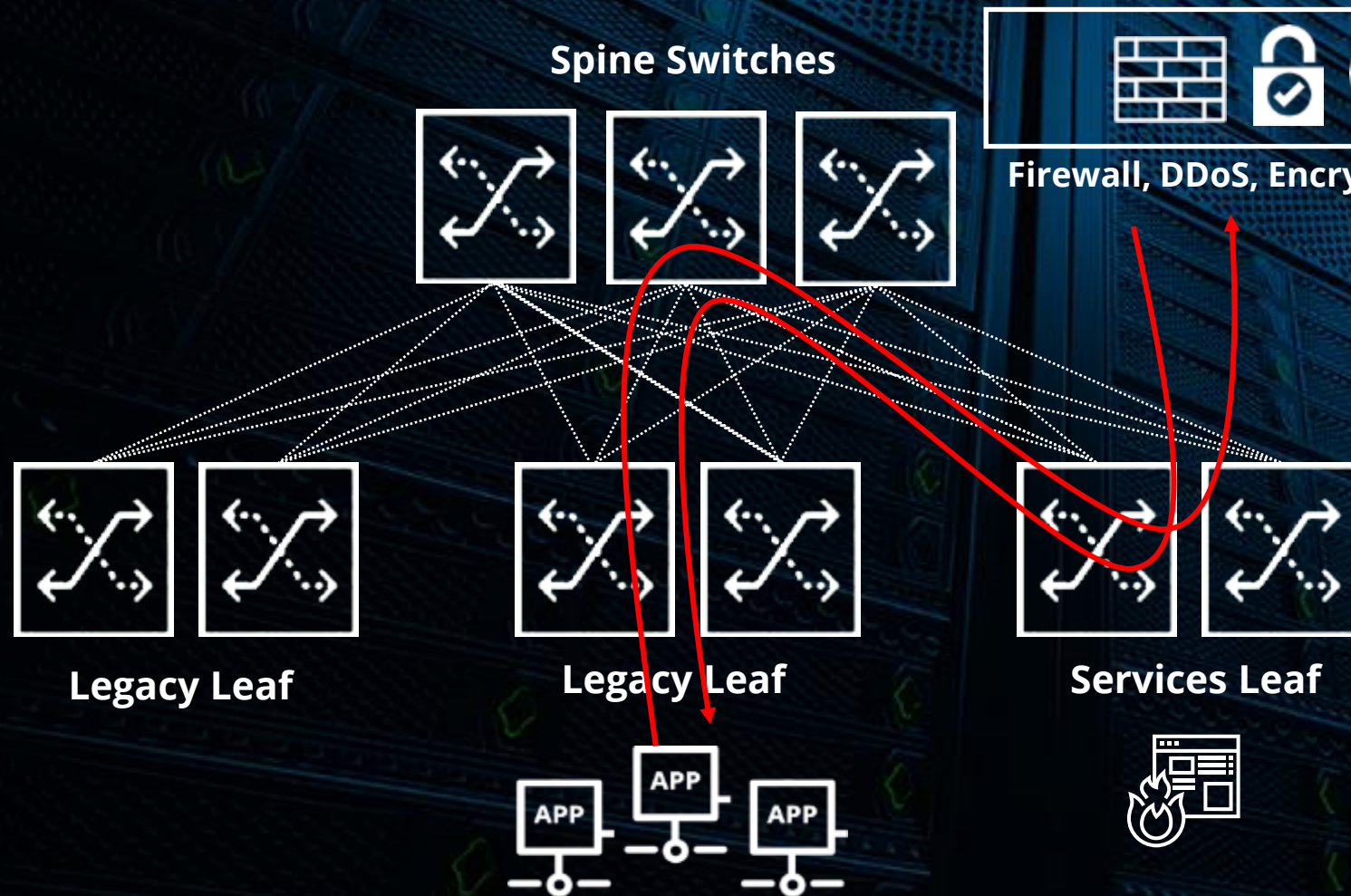
dormakaba

...and many more



CHALLENGES WITH DC SERVICES TODAY

TROMBONING TO SERVICES APPLIANCE CLUSTERS



Firewall, DDoS, Encryption, TAP ...

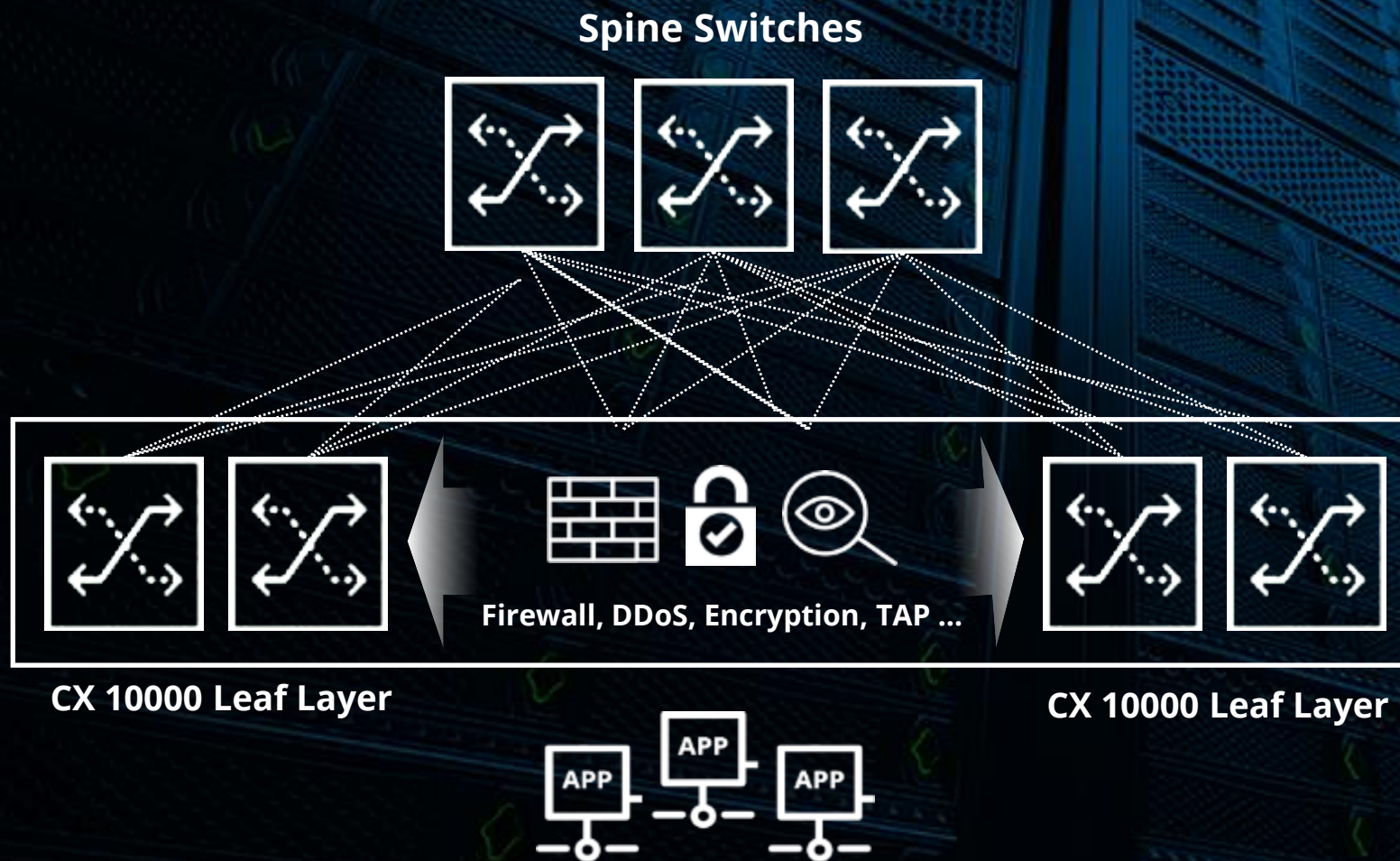
Appliances become
bottlenecks for east-west
traffic

Impacts application latency,
performance, compliance
Increases complexity and cost
(Appliance sprawl, licensing)



WHAT IF THERE WAS A **BETTER WAY?**

SERVICES DISTRIBUTED ACROSS ALL LEAFS



Services applied closer to applications at scale

Stateful zero-trust, firewalling, DDoS natively embedded for any workload

Reduces appliance sprawl and cost

Future proof architecture – additional functionality enabled on demand

Encryption, Stateful NAT, Load-balancing



A NEW SWITCHING CATEGORY: DISTRIBUTED SERVICES SWITCH

ARUBA CX 10000

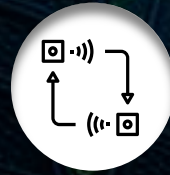
L4-L7 Stateful Software Services



FIREWALL



DDoS



TELEMETRY



ENCRYPTION*



NAT*



SLB*



Industry first smartswitch
for the enterprise

Embedded Pensando DPU's and
extensible services built into the
fabric

Aruba AOS-CX and Orchestration
(AFC)

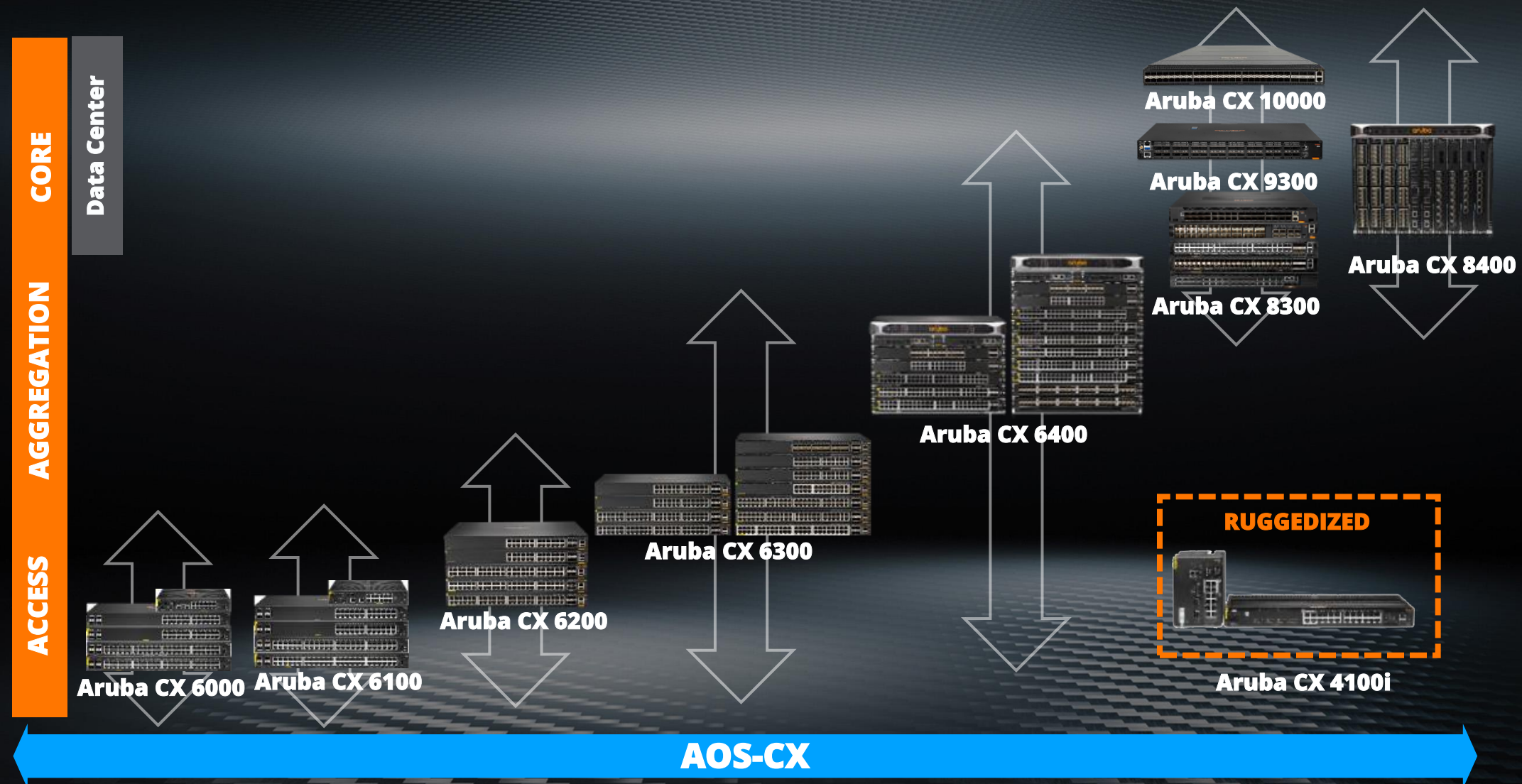
**10X PERFORMANCE,
100X SCALE AT 1/3 TCO**



*Roadmap for
software enablement

ARUBA CX SWITCHING PORTFOLIO

SINGLE OS FROM SMB TO CAMPUS TO CORE



aruba

a Hewlett Packard
Enterprise company

EDGE-TO-CLOUD SECURITY PROTECT



Effectively Addressing Risk

92%

**Critical risks
Addressed by
Segmentation**

67%

**Devices with risk
Reduced by
Segmentation**

Most Effective Action For Critical Risk

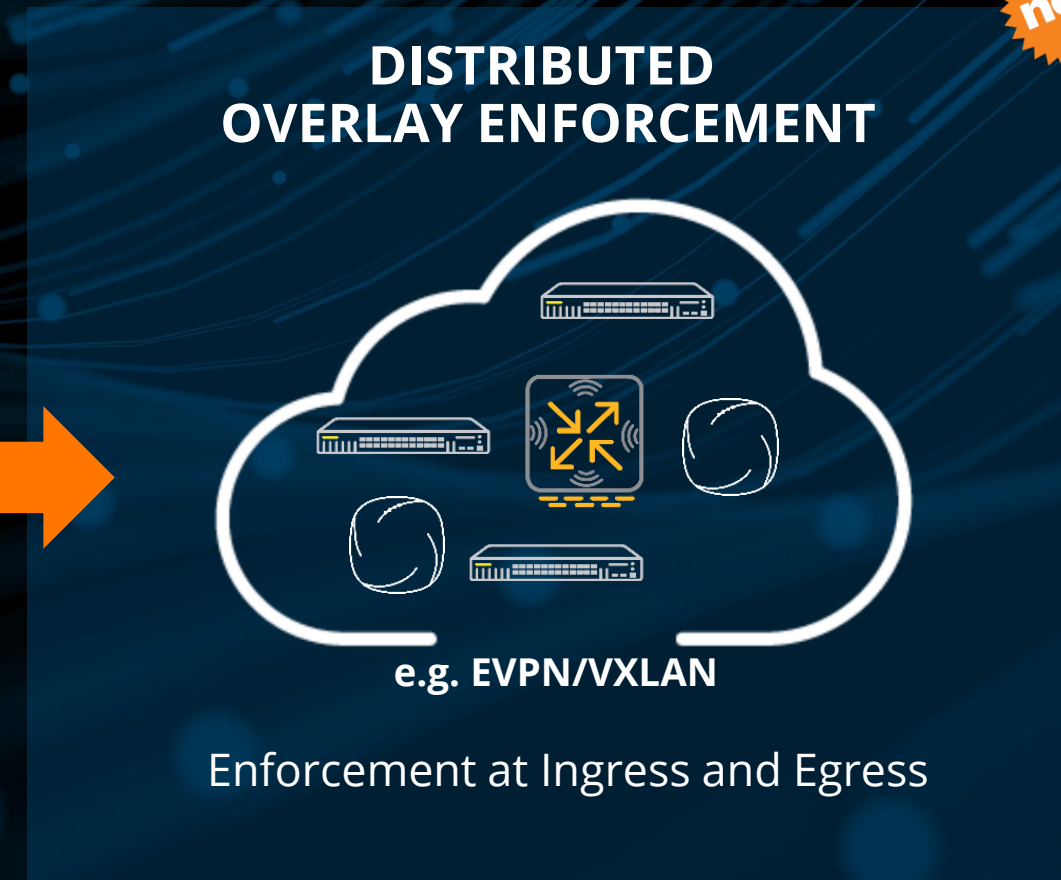
- E-W Segmentation 64.77%
- Update Firmware 18.02%
- Service Hardening 7.42%
- Change Credentials 6.70%
- N-S Segmentation 2.46%
- Incident Response 0.47%
- Configuration Change 0.16%



NETCONDUCTOR EVOLUTION OF DYNAMIC SEGMENTATION WITH CHOICE OF OVERLAYS



ClearPass Policy Enforcement Firewall



Aruba Central NetConductor

new





INTRODUCING ARUBA CENTRAL NETCONDUCTOR

Unified network overlay configuration,
traffic and security policies at scale

Intent-based workflows
for ease of operation

Automated configuration
and policy propagation

Uses widely adopted
protocols for interoperability
and ease of adoption



ARUBA CENTRAL NETCONDUCTOR COMPONENTS



ARUBA CENTRAL

ANALYZE AND ACT

Client Insights
Network Insights



AI Ops

PROTECT

ClearPass/Cloud Auth
Policy Manager
Overlay Flexibility



Edge-to-Cloud
Security

CONNECT

Fabric Wizard
Group Policy ID
Switch and Gateway Enforcement



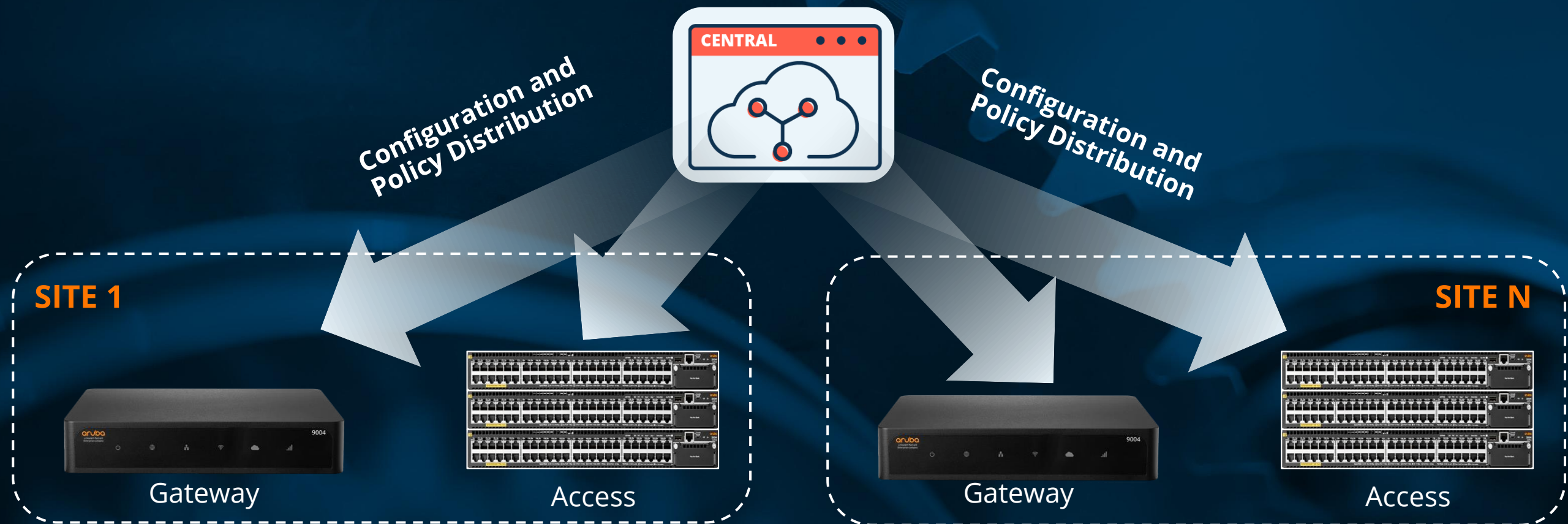
Unified
Infrastructure

AS-A-SERVICE



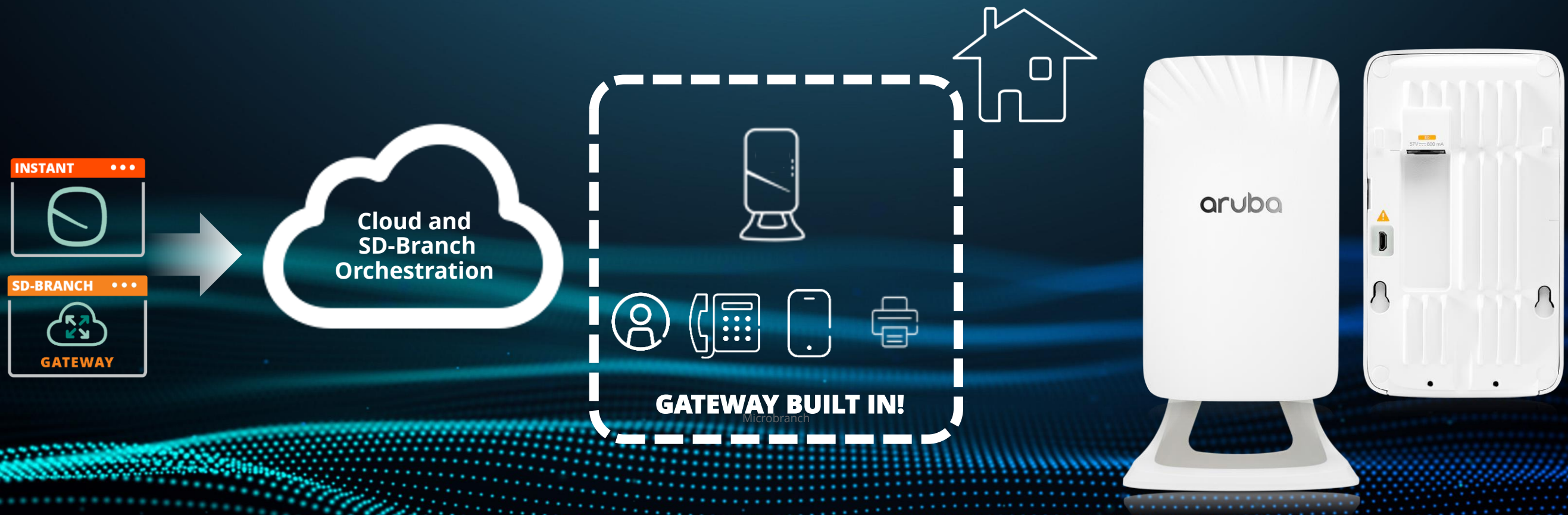
AUTOMATION AT SCALE

Central NetConductor
Management and Orchestration

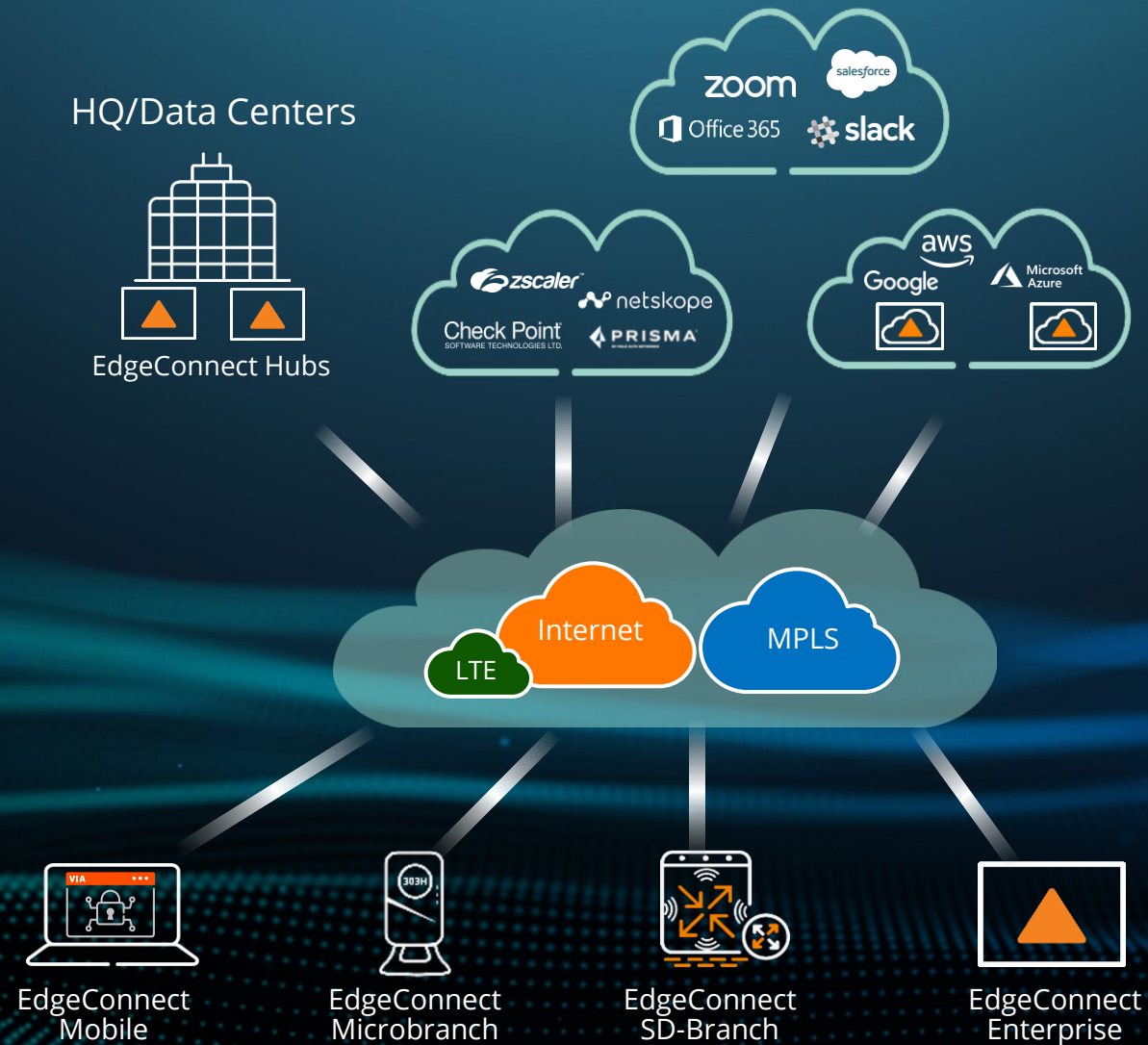


MICROBRANCH HYBRID WORKPLACE SOLUTION

SECURE, IN-OFFICE EXPERIENCE TO EMPLOYEES ANYWHERE

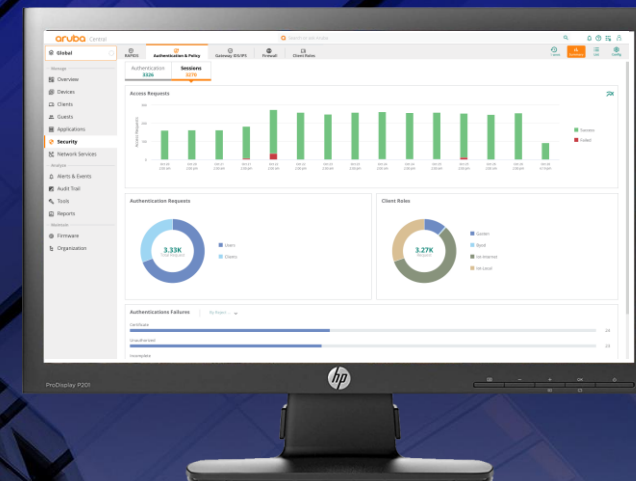


A UNIFIED SD-WAN FABRIC



SOLVING CUSTOMER CHALLENGES INTRODUCING CLOUD AUTH

ARUBA CENTRAL

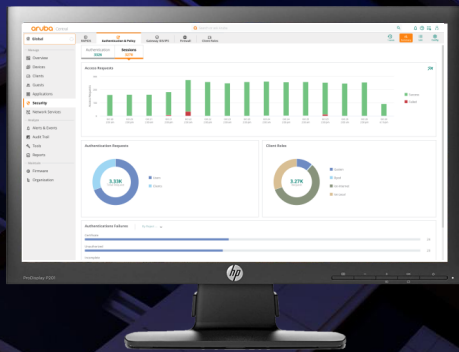


Integrated creation of roles and authentication/authorization workflows.
Built into Aruba Central Cloud for simplicity.
A shift to cloud-managed NAC.



MODERN EDGE TO CLOUD SECURITY

BENEFITS TO IT



Visibility into
authentication
traffic patterns
through dashboards



Authentication
validated
against cloud identity
stores to grant access



Leverages Central
Client Insights for
accurate profiling and
behavior monitoring.

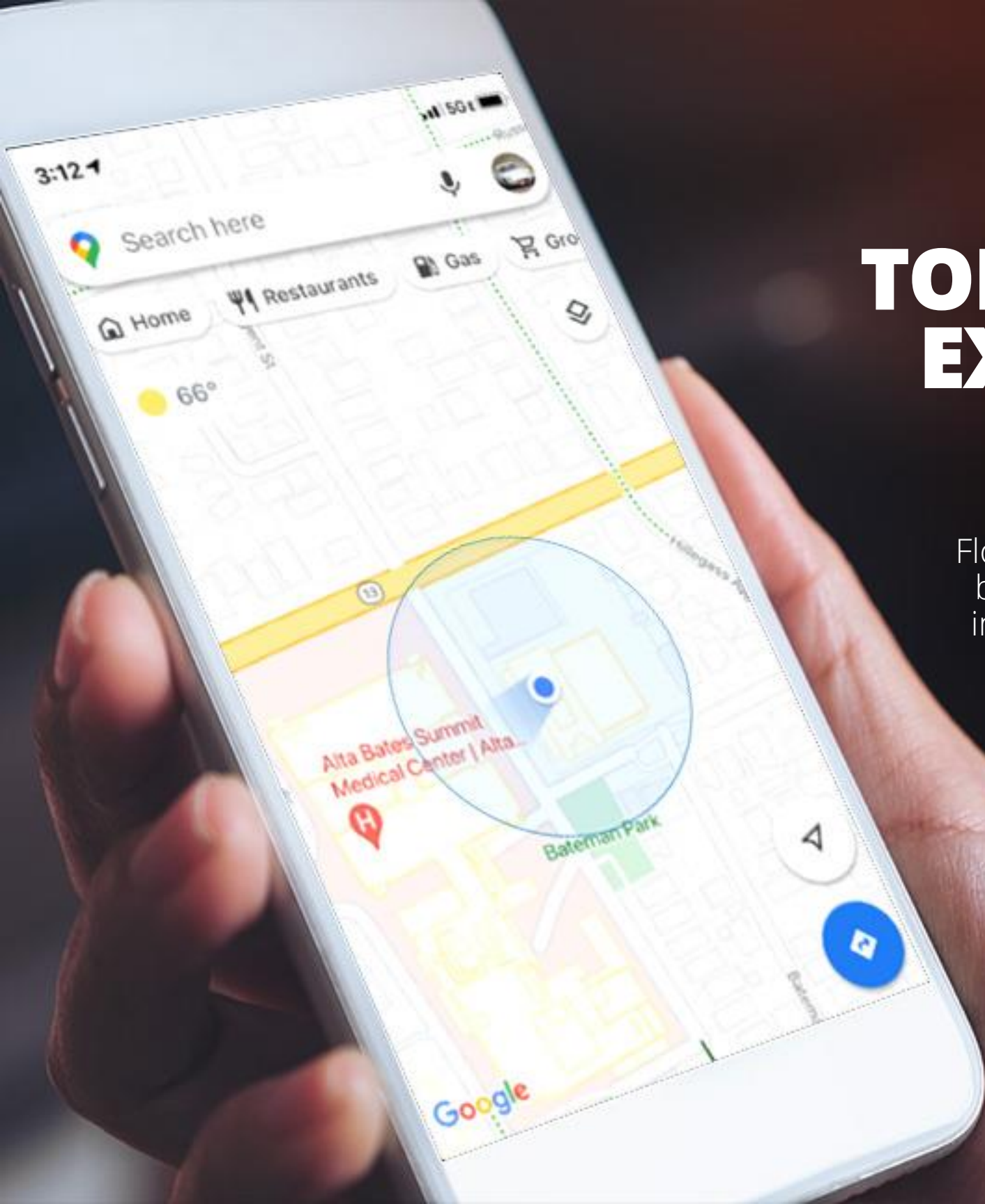


aruba

a Hewlett Packard
Enterprise company

AIOPS ANALYZE & ACT





TODAY'S INDOOR LOCATION EXPERIENCE IS LACKING...

#1

Floorplans cannot be relied on for indoor accuracy

#2

Traditional Wi-Fi and Bluetooth ranging techniques are poor

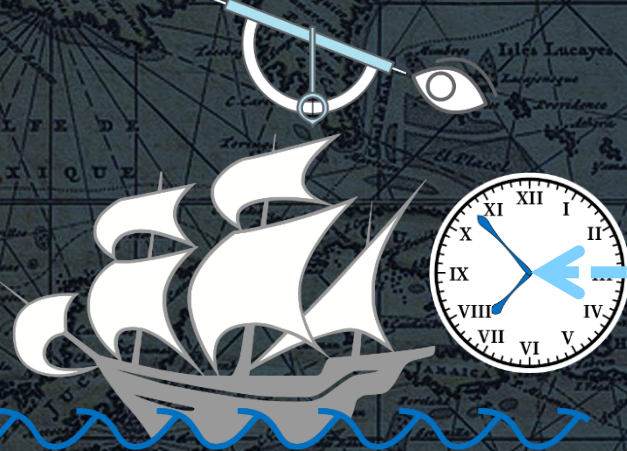
#3

Software requires extensive custom development



DETERMINING A CLIENT DEVICE'S PRECISE LOCATION REQUIRES **ABSOLUTE REFERENCE POINTS**

LATITUDE



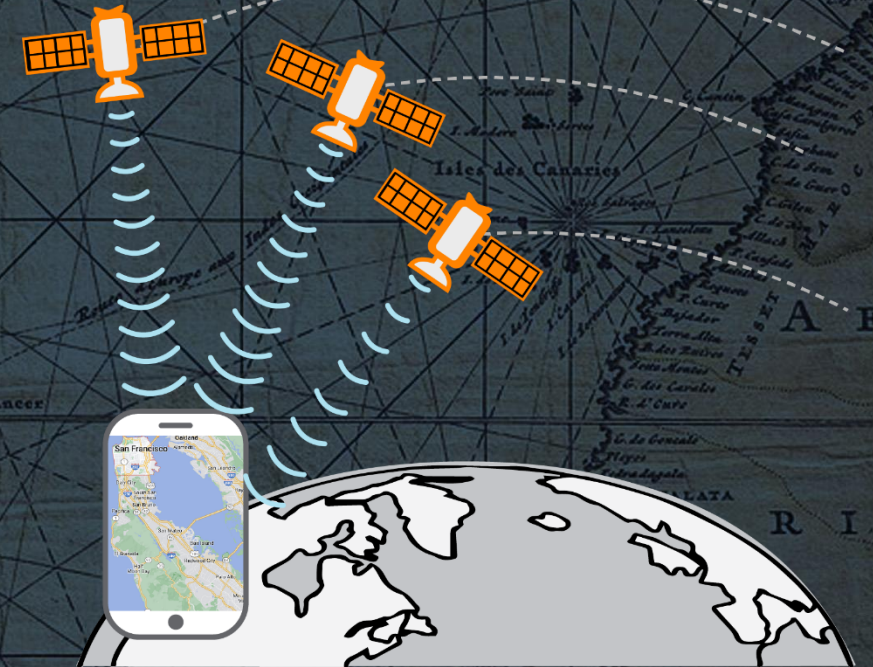
North Star

LONGITUDE



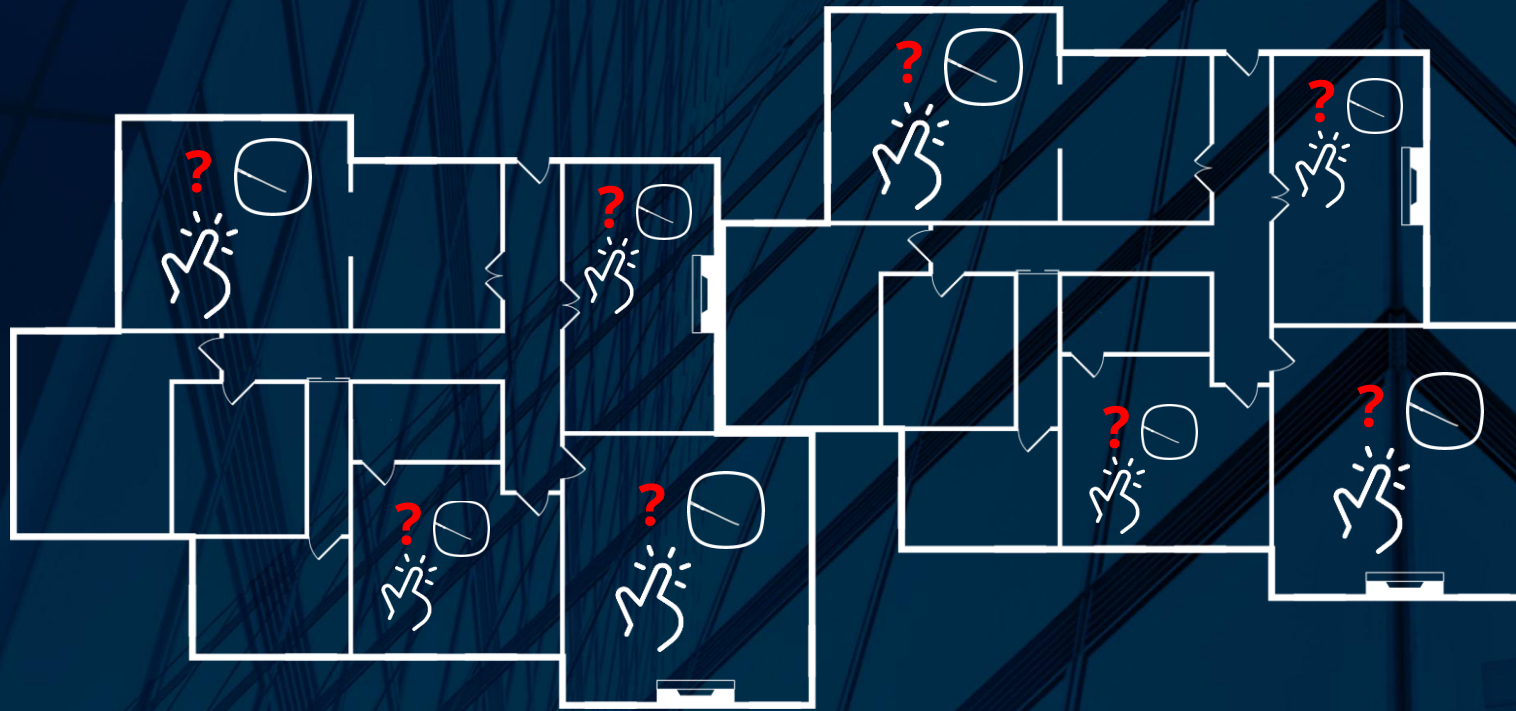
Greenwich Mean Time

SATELLITE NAVIGATION



Orbital Position

WHAT'S WRONG WITH INDOOR APs AS ABSOLUTE REFERENCE POINTS?



80% of Wi-Fi APs are not mapped

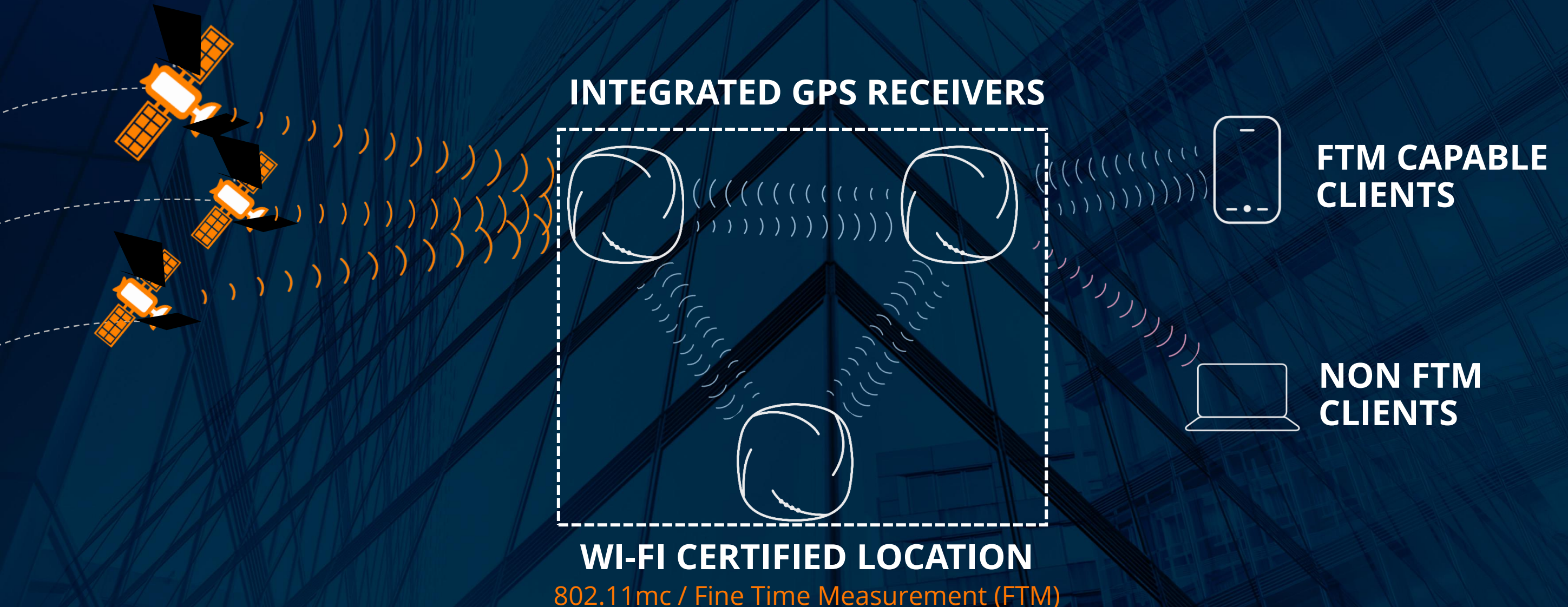
Placement errors of 5-10 meters

Floor plans are 2D-only

Not synced with Google /
Apple / Bing Maps



INTRODUCING **OPEN LOCATE** WORLD'S FIRST SELF-LOCATING WIRELESS NETWORK



THE ARUBA ADVANTAGE

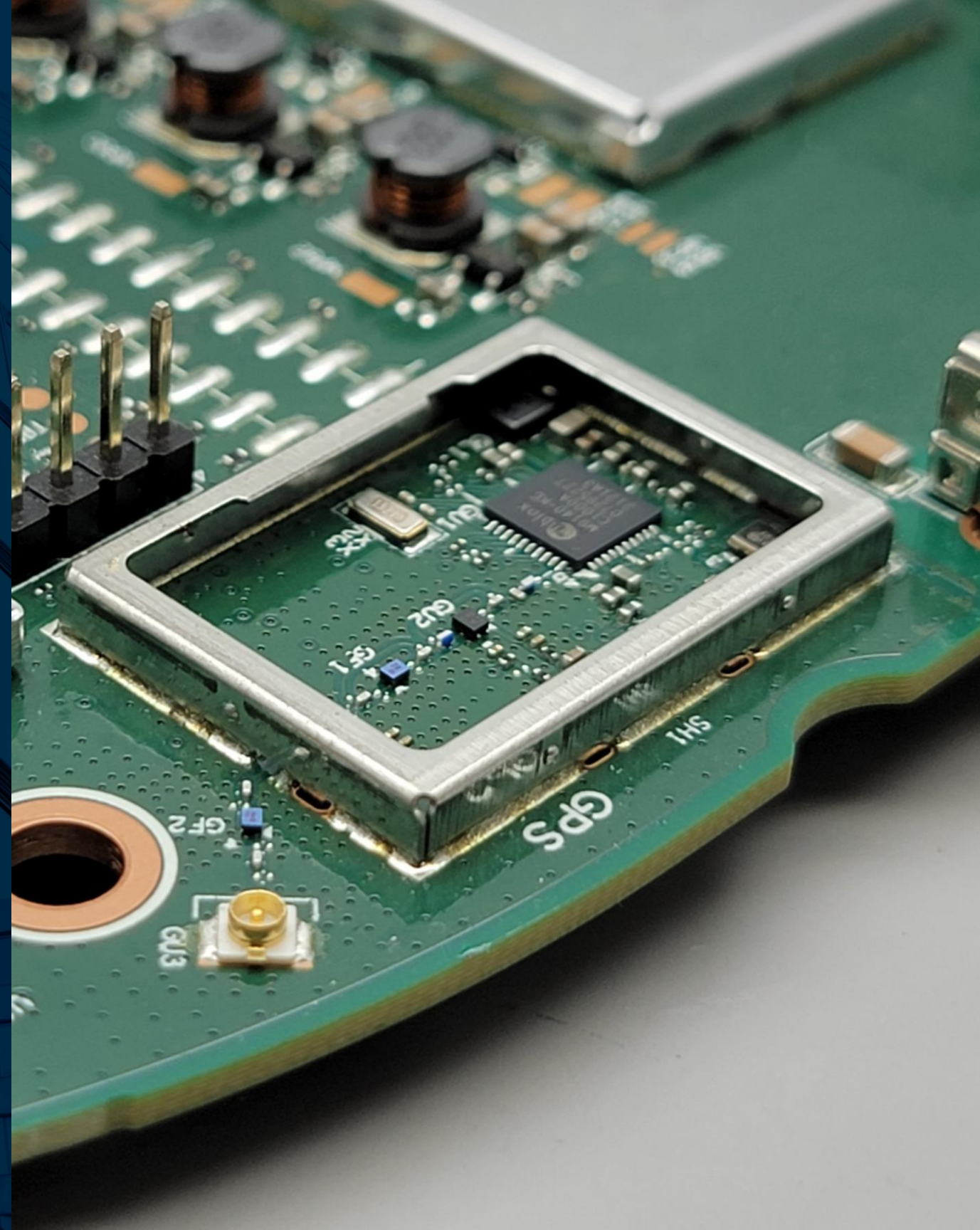
Automatic AP location discovery

Aruba AP interoperability
with Google / Apple / Bing Maps

Enabling developers to use
our location data

Ready for outdoor 6 GHz use*

*pending regulatory approval



OPEN LOCATE-READY ACCESS POINTS

WI-FI 6E AND WI-FI 6 PORTFOLIO

PREPARE FOR DIGITAL ACCELERATION WITH ARUBA WI-FI 6E & WI-FI 6

GPS RECEIVER



new



650 Series



630 Series

FINE TIME MEASUREMENT



550 Series



530 Series



510 Series



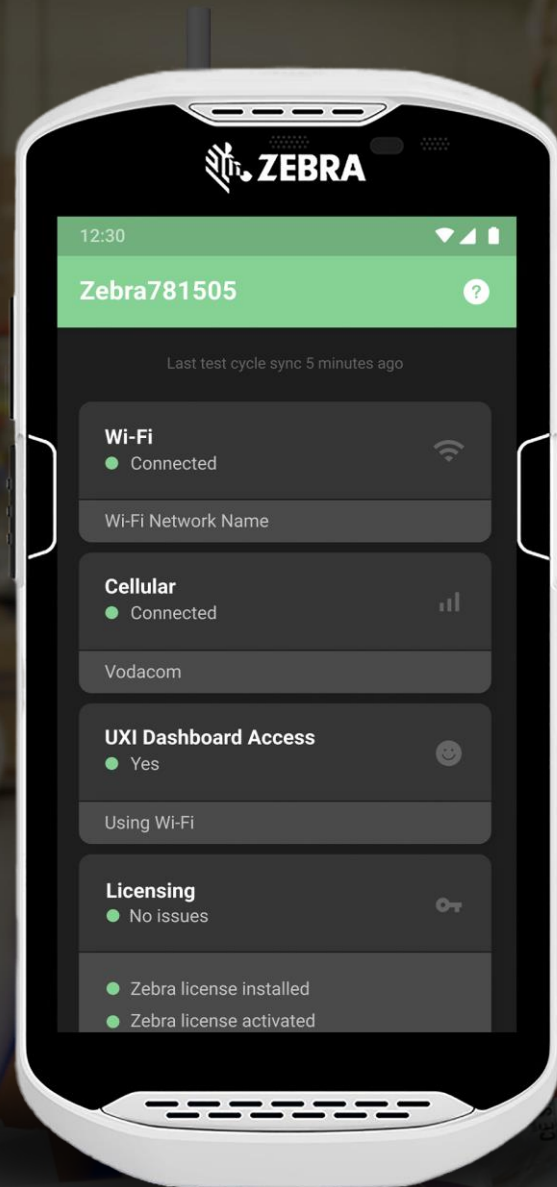
500 Series



500H Series

Upgrade today to take advantage of
advanced location capabilities



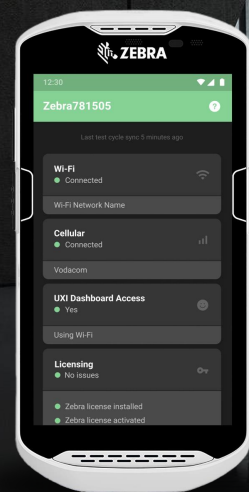


UXI AGENT FOR ZEBRA

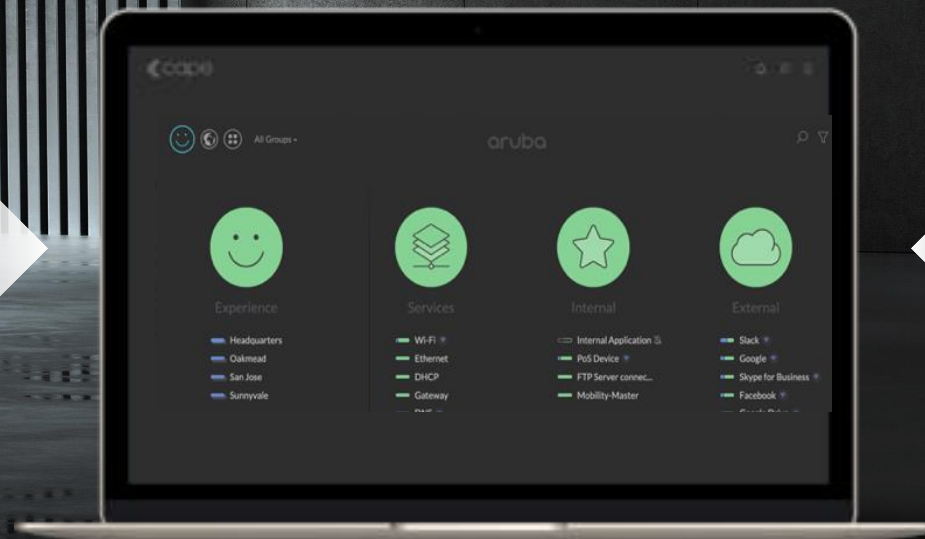


HELPING LoB WITH DIGITAL ACCELERATION **PROBLEM RESOLUTION**

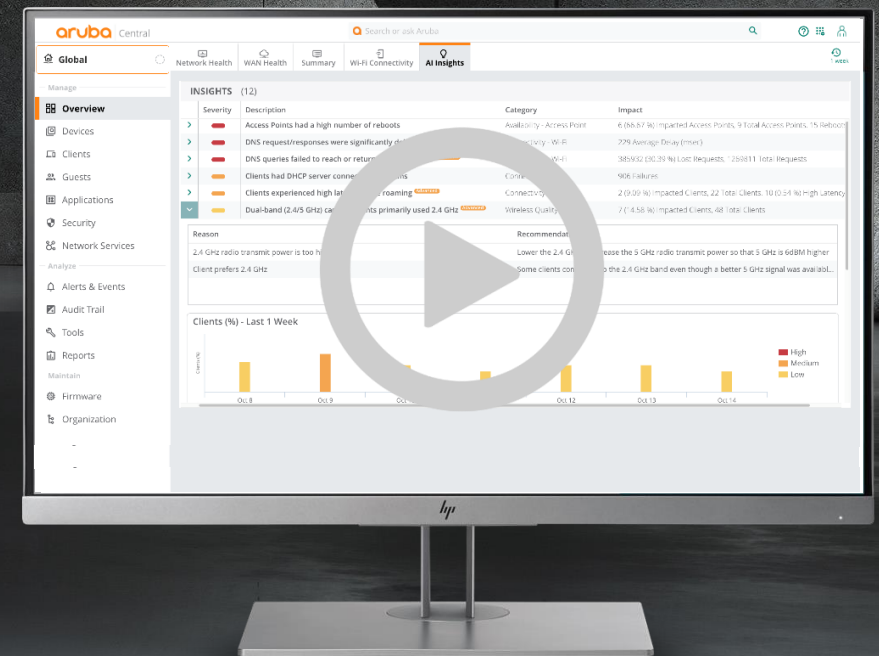
UXI Agent



User Experience Insight



Aruba Central (Open Locate)



Open Locate data from Aruba Central
enhances UXI analytics and assurance



The way forward

HPE has a **unique vantage point** rooted in our own sustainability journey

Commitment to be a net-zero enterprise across our entire value chain by 2040 with near-term goals by 2030

~50%

of renewable electricity sourced in our operations on our way to 100% by 2030¹

6000+

patents for transformational low-carbon technologies filed since 2000³

85%

of tech returned to HPE is upcycled and put back into active use²

>500

Social and Environmental Responsibility audits conducted with suppliers

¹HPE Living Progress Report, 2021

²HPE Financial Services Technology Renewal Center Information

³ Based on HPE internal records

⁴ 2021 Living Progress Data Summary, 2022

CONGRATS TO OUR AIRHEADS COMMUNITY MEMBERS

Community for:

Customers/Partners/Employees/Influencers

160K+ members

1101k page visits

442 accepted solutions

Average response time approx. 18 min

Become a member at:

[LINK](#)

airheads
COMMUNITY

STATS AT-A-GLANCE

Aruba's Airheads Community is a vibrant interactive community and a place to share and learn about wireless and wired LANs, network security, mobile devices, applications, software-defined networking (SDN), network management, and mobile engagement.

WWW.COMMUNITY.ARUBANETWORKS.COM



TOP INDIVIDUAL STATS

ALL-TIME HIGH STATS 2021



Visits in a Month **March**

3163 Total New Members (April)



'Mobility Controller'

Top Search Term

Unique Visitors (September) **108498**



1101280 Page Views in a month (March)



Most Accepted Solutions
Herman Robers

Most Posts by user
Herman Robers



Longest Active Account
Albert Pang

Most Kudos Received
Herman Robers



COMMUNITY STATS



4384 Total Number of New Forum posts

223 Total Countries Represented

443 Accepted Solutions



7631 Knowledge Base Articles

6284 Total Kudos

160612 Total Members



aruba
a Hewlett Packard
Enterprise company

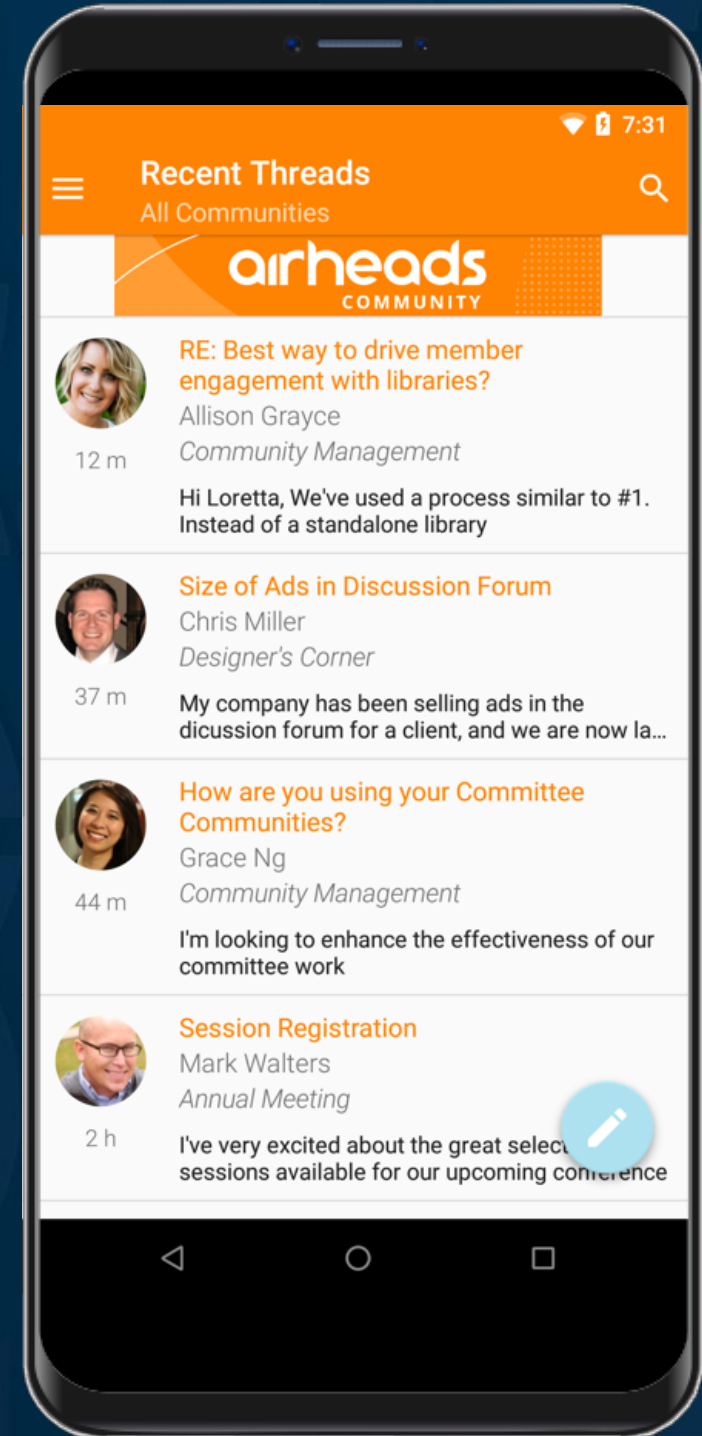
INFO_Airheads-stats-infographic_RM_01142022

airheads

COMMUNITY

Still not part of the Airheads Community?

Sign up today:
www.community.arubanetworks.com



ARUBA '22 BALTIC DAY

Thank you



dobias.vaningen@hpe.com



@networkingdvi



Dobias van Ingen



+31 651785440

