

AP-500H-MNTD Mount Kit

Installation Guide

The AP-500H-MNTD is a stand-alone desk mount for the 500H access points.



A #1 Phillips and T8H screwdriver are required for installation.

Package Contents

- Mount stand
- (x2) M2.5x12, T8H Hex screws
- (x2) M2.5x12 Pan Head Phillips screws
- (x1) M2.5x7 T8H Hex Plastite screw

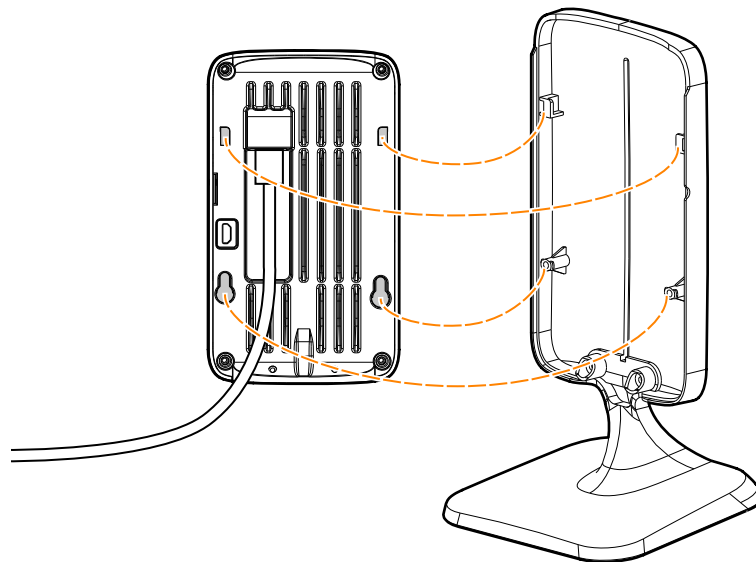
Installation



This mount kit only supports the desktop solution for the 500H Series access points.

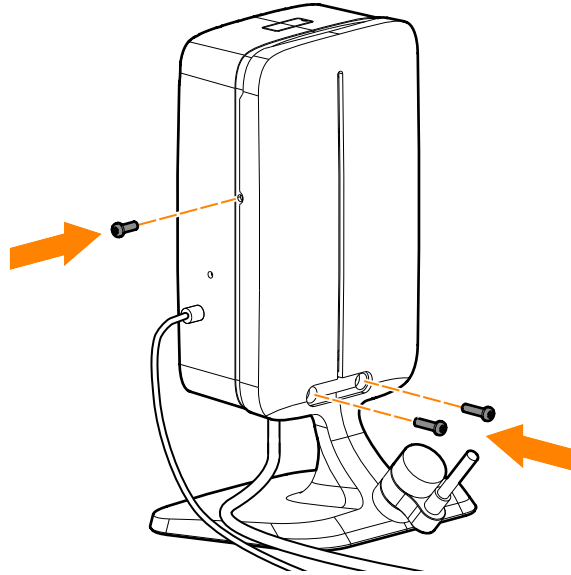
1. Attach an active Ethernet cable to the E0 port located on the back of the access point, as shown in [Figure 1](#).
2. Align the slots on the back of the access point against the guide posts and slots on the mount, then slide the access point down, as shown in [Figure 1](#).

Figure 1 *Install Access Point to Mount Cover*



3. Once the access point is attached to the desk mount, insert and fasten the security screw on the right side of the mount, as shown in [Figure 2](#).
4. Insert either the two M2.5x12 or T8H Hex security screws into the holes on the back of the mount stand and tighten to anchor the access point to the mount, as shown in [Figure 2](#).

Figure 2 *Secure Access Point Onto Mount*



5. (Optional) Use the Kensington lock slot located on the back of the mount stand to lock this mount kit to a secure surface.
6. If the access point requires a DC power adapter, insert a power cable into the receptacle located on the side of the access point.