

Windows Server 2008 R2 x64

Server Manager

File Action View Help

Console1 - [Console Root]

File Action View Favorites Window Help

Console Root

Name

Actions

There are no items to show in this view.

Console Root

More Actions

Access Type Source

Grant Access Unspecified

Deny Access Unspecified

Deny Access Unspecified

Actions

Network Policies

New

Export List

View

Refresh

Help

Aruba-Dot1

Move Up

Move Down

Disable

Delete

Rename

Duplicate Policy

Properties

Help

Condition Value

User Groups PANDA\IT

NAS Port Type Wireless - IEEE 802.11

Settings - Then the following settings are applied:

Setting Value

Authentication Method EAP

Access Permission Grant Access

Update Noncompliant Clients True

Server Manager

Roles

Act

Console Root

RADIUS Clients and Servers

RADIUS Clients

Remote RADIUS Server Groups

Policies

Connection Request Policies

Network Policies

Health Policies

Network Access Protection

Accounting

Templates Management

Routing and Remote Access

Web Server (IIS)

Windows Server 2008 R2 x...

Add or Remove Snap-ins

You can select snap-ins for this console from those available on your computer and configure the selected set of snap-ins. For extensible snap-ins, you can configure which extensions are enabled.

Available snap-ins:

Snap-in	Vendor
Active Directory Domal...	Microsoft Corp...
Active Directory Sites a...	Microsoft Corp...
Active Directory Users ...	Microsoft Corp...
ActiveX Control	Microsoft Corp...
ADSI Edit	Microsoft Corp...
Authorization Manager	Microsoft Corp...
Certificate Templates	Microsoft Corp...
Certificates	Microsoft Corp...
Certification Authority	Microsoft Corp...
Component Services	Microsoft Corp...
Computer Management	Microsoft Corp...
Device Manager	Microsoft Corp...
DHCP	Microsoft Corp...
Disk Management	Microsoft and ...
DNS	Microsoft Corp...

Selected snap-ins:

- Console Root

Buttons: Add >, Edit Extensions..., Remove, Move Up, Move Down, Advanced...

Description:

You can use the Active Directory Domains and Trusts snap-in to manage Active Directory domains and trusts.

OK Cancel

Setting	Value
Authentication Method	EAP
Access Permission	Grant Access
Update Noncompliant Clients	True

Network and the circumstances under

Order	Access Type	Source
Grant Access	Unspecified	
Deny Access	Unspecified	
Deny Access	Unspecified	

Actions

Network Policies

- New
- Export List
- View
- Refresh
- Help

Aruba-Dot1

- Move Up
- Move Down
- Disable
- Delete
- Rename
- Duplicate Policy
- Properties
- Help

Windows Server 2008 R2 x...

Add or Remove Snap-ins

You can select snap-ins for this console from those available on your computer and configure the selected set of snap-ins. For extensible snap-ins, you can configure which extensions

Available snap-ins:

Snap-in	Vendor
Active Directory Domai...	Microsoft Corp..
Active Directory Sites a...	Microsoft Corp..
Active Directory Users ...	Microsoft Corp..
ActiveX Control	Microsoft Corp..
ADSI Edit	Microsoft Corp..
Authorization Manager	Microsoft Corp..
Certificate Templates	Microsoft Corp..
Certificates	Microsoft Corp..
Certification Authority	Microsoft Corp..
Component Services	Microsoft Corp..
Computer Management	Microsoft Corp..
Device Manager	Microsoft Corp..
DHCP	Microsoft Corp..
Disk Management	Microsoft and ...
DNS	Microsoft Corp..

Description:

The Certificates snap-in allows you to browse

Certificates snap-in

This snap-in will always manage certificates for:

☐ My user account
☐ Service account
☒ Computer account

< Back Next > Cancel

OK Cancel

Setting	Value
Authentication Method	EAP
Access Permission	Grant Access
Update Noncompliant Clients	True

Windows Server 2008 R2 x...

Add or Remove Snap-ins

You can select snap-ins for this console from those available on your computer and configure the selected set of snap-ins. For extensible snap-ins, you can configure which extensions

Available snap-ins:

Snap-in	Vendor
Active Directory Domai...	Microsoft Corp..
Active Directory Sites a...	Microsoft Corp..
Active Directory Users ...	Microsoft Corp..
ActiveX Control	Microsoft Corp..
ADSI Edit	Microsoft Corp..
Authorization Manager	Microsoft Corp..
Certificate Templates	Microsoft Corp..
Certificates	Microsoft Corp..
Certification Authority	Microsoft Corp..
Component Services	Microsoft Corp..
Computer Management	Microsoft Corp..
Device Manager	Microsoft Corp..
DHCP	Microsoft Corp..
Disk Management	Microsoft and ...
DNS	Microsoft Corp..

Description:

The Certificates snap-in allows you to browse

Select Computer

Select the computer you want this snap-in to manage.

This snap-in will always manage:

☒ Local computer: (the computer this console is running on)

☐ Another computer:

☐ Allow the selected computer to be changed when launching from the command line. This only applies if you save the console.

< Back Finish Cancel

Actions

Network Policies

- New
- Export List
- View
- Refresh
- Help

Aruba-Dot1

- Move Up
- Move Down
- Disable
- Delete
- Rename
- Duplicate Policy
- Properties
- Help

Setting	Value
Authentication Method	EAP
Access Permission	Grant Access
Update Noncompliant Clients	True

Windows Server 2008 R2 x...

Add or Remove Snap-ins

You can select snap-ins for this console from those available on your computer and configure the selected set of snap-ins. For extensible snap-ins, you can configure which extensions are enabled.

Available snap-ins:

Snap-in	Vendor
Active Directory Domai...	Microsoft Corp...
Active Directory Sites a...	Microsoft Corp...
Active Directory Users ...	Microsoft Corp...
ActiveX Control	Microsoft Corp...
ADSI Edit	Microsoft Corp...
Authorization Manager	Microsoft Corp...
Certificate Templates	Microsoft Corp...
Certificates	Microsoft Corp...
Certification Authority	Microsoft Corp...
Component Services	Microsoft Corp...
Computer Management	Microsoft Corp...
Device Manager	Microsoft Corp...
DHCP	Microsoft Corp...
Disk Management	Microsoft and ...
DNS	Microsoft Corp...

Selected snap-ins:

- Console Root
- Certificates (Local Computer)

Buttons: Add >, Edit Extensions..., Remove, Move Up, Move Down, Advanced...

Description:

The Certificates snap-in allows you to browse the contents of the certificate stores for yourself, a service, or a computer.

Buttons: OK, Cancel

Setting	Value
Authentication Method	EAP
Access Permission	Grant Access
Update Noncompliant Clients	True

Network and the circumstances under

Order	Access Type	Source
	Grant Access	Unspecified
	Deny Access	Unspecified
	Deny Access	Unspecified

Actions

Network Policies

- New
- Export List
- View
- Refresh
- Help

Aruba-Dot1

- Move Up
- Move Down
- Disable
- Delete
- Rename
- Duplicate Policy
- Properties
- Help

Windows Server 2008 R2 x... X

Console1 - [Console Root\Certificates (Local Computer)\Personal\Certificates]

File Action View Favorites Window Help



Console Root	Issued To ▲	Issued By	Expiratio...	Intended Pur...	Friendly Name	St...	Certificat...
Certificates (Local)	Server1.panda.com	server1-ca	2/2/2021	Directory Ser...	<None>		Directory ...
Personal	Server1.panda.com	server1-ca	3/1/2021	Client Authe...	<None>		Domain C...
Certificates	Server1.panda.com	server1-ca	2/2/2021	Client Authe...	<None>		Domain C...
Trusted Root Ce	server1-ca	server1-ca	2/3/2025	<All>	<None>		Root Cert...
Enterprise Trust							
Intermediate Ce							
Trusted Publishe							
Untrusted Certifi							
Third-Party Root							
Trusted People							
Certificate Enrol							
Smart Card Trus							
Trusted Devices							

Actions

Certificates ▲

More Actions ▶

Personal store contains 4 certificates.

To direct input to this VM, move the mouse pointer inside or press Ctrl+G.

Windows Server 2008 R2 x... X

Console1 - [Console Root\Certificates (Local Computer)\Personal\Certificates]

File Action View Favorites Window Help



Console Root	Issued To ▲	Issued By	Expiratio...	Intended Pur...	Friendly Name	St...	Certificat...
Certificates (Local)	Server1.panda.com	server1-ca	2/2/2021	Directory Ser...	<None>		Directory ...
Personal	Server1.panda.com	server1-ca	3/1/2021	Client Authe...	<None>		Domain C...
Certificates				Client Authe...	<None>		Domain C...
Trusted Ro			021	<All>	<None>		Root Cert...
Enterprise							
Intermedia							
Trusted Pul							
Untrusted C							
Third-Party							
Trusted Pe							
Certificate							
Smart Card							
Trusted Devices							

Actions

Certificates ▲

More Actions ▶

Contains actions that can be performed on the item.

To direct input to this VM, move the mouse pointer inside or press Ctrl+G.

Console Root	Issued To ▲	Issue
Certificates (Local Computer)		
Personal		
Certificates		
Trusted Root Certificates	Server1.panda.com	serve
Enterprise Trust	Server1.panda.com	serve
Intermediate Certificates	Server1.panda.com	serve
Trusted Publishers	server1-ca	serve
Untrusted Certificates		
Third-Party Root Certificates		
Trusted People		
Certificate Enrollment		
Smart Card Trust		
Trusted Devices		

Certificate Enrollment

Certificate Enrollment

Before You Begin

The following steps will help you install certificates, which are digital credentials used to connect to wireless networks, protect content, establish identity, and do other security-related tasks.

Before requesting a certificate, verify the following:

Your computer is connected to the network

You have credentials that can be used to verify your right to obtain the certificate

Learn more about [digital certificates](#)

Next

Cancel

Actions

Certificates ▲

More Actions ▶

Console Root	Issued To	Issue
Certificates (Local Computer)		
Personal		
Certificates	Server1.panda.com	serve
Trusted Root Certificates	Server1.panda.com	serve
Enterprise Trust	Server1.panda.com	serve
Intermediate Certificates	server1-ca	serve
Trusted Publishers		
Untrusted Certificates		
Third-Party Root Certificates		
Trusted People		
Certificate Enrollment		
Smart Card Trust		
Trusted Devices		

Certificate Enrollment

Certificate Enrollment

Before You Begin

The following steps will help you install certificates, which are digital credentials used to connect to wireless networks, protect content, establish identity, and do other security-related tasks.

Before requesting a certificate, verify the following:

Your computer is connected to the network

You have credentials that can be used to verify your right to obtain the certificate

Learn more about [digital certificates](#)

Next

Cancel

Actions

Certificates

More Actions

Windows Server 2008 R2 x...

Console1 - [Console Root\Certificates (Local Computer)\Personal\Certificates]

File Action View Favorites Window Help



Console Root	Issued To	Issue
Certificates (Local Computer)		
Personal		
Certificates		
Trusted Root Certificates	Server1.panda.com	serve
Enterprise Trust	Server1.panda.com	serve
Intermediate Certificates	Server1.panda.com	serve
Trusted Publishers	server1-ca	
Untrusted Certificates		
Third-Party Root Certificates		
Trusted People		
Certificate Enrollment		
Smart Card Trust		
Trusted Devices		

Certificate Enrollment

Certificate Enrollment

Select Certificate Enrollment Policy

Certificate enrollment policy enables enrollment for certificates based on predefined certificate templates. Certificate enrollment policy may already be configured for you.

Configured by your administrator

Active Directory Enrollment Policy

Configured by you

[Add New](#)

Learn more about [certificate enrollment policy](#)

Next

Cancel

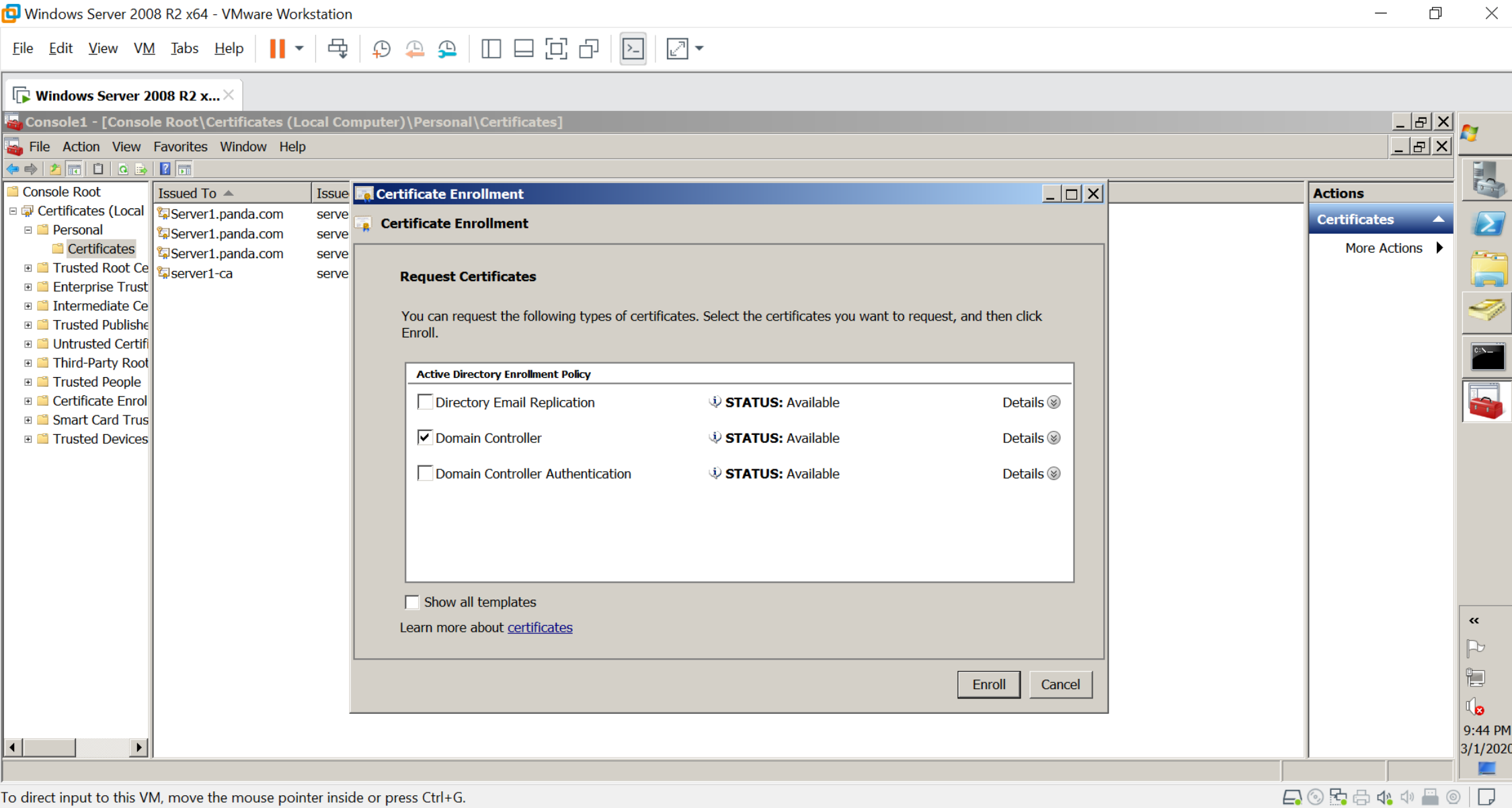
Actions

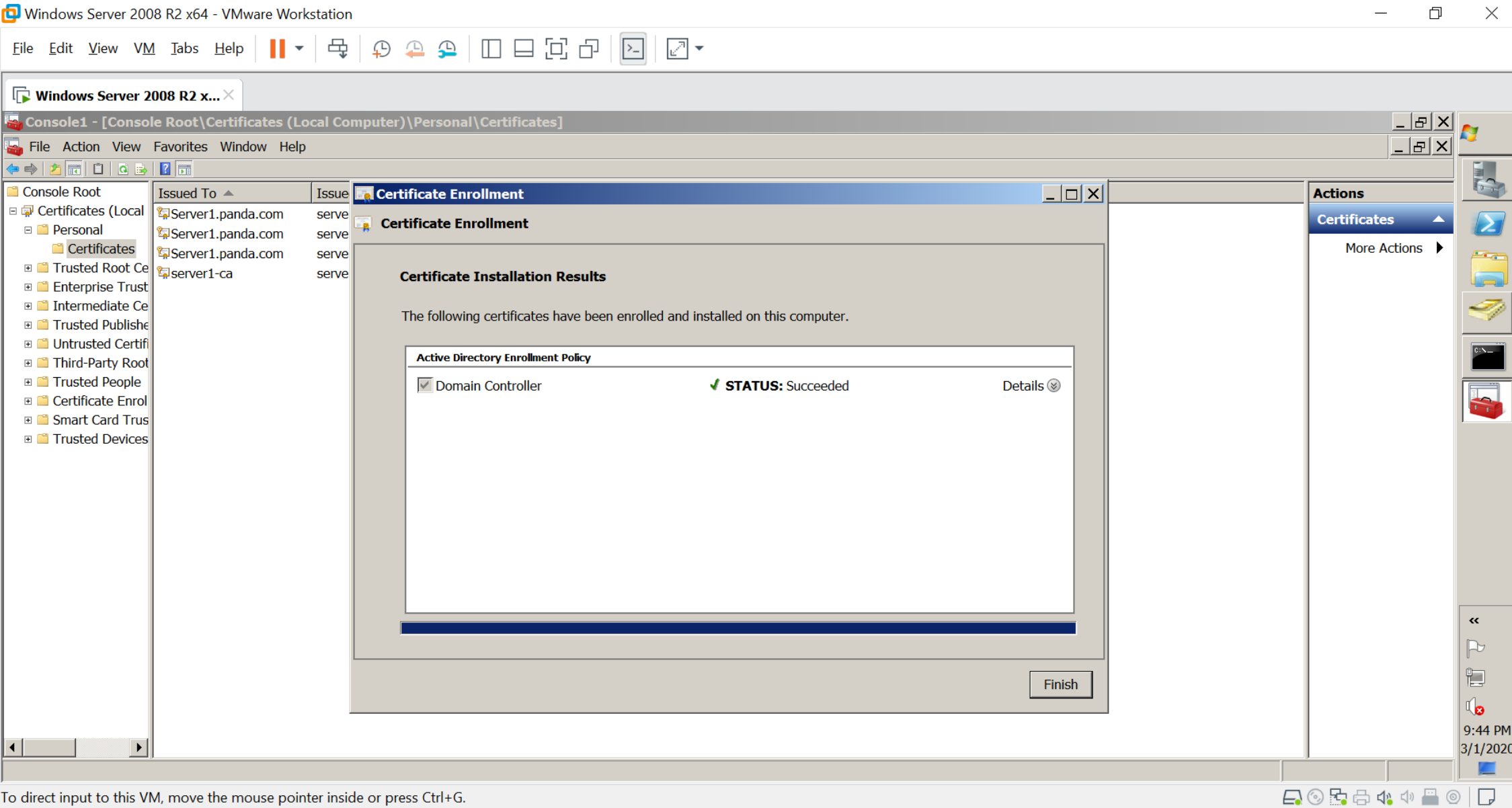
Certificates

[More Actions](#)

<<

9:44 PM
3/1/2020





Windows Server 2008 R2 x... X

Console1 - [Console Root\Certificates (Local Computer)\Personal\Certificates]

File Action View Favorites Window Help



Console Root	Issued To ▲	Issued By	Expiratio...	Intended Pur...	Friendly Name	St...	Certificat...
Certificates (Local)	Server1.panda.com	server1-ca	2/2/2021	Directory Ser...	<None>		Directory ...
Personal	Server1.panda.com	server1-ca	3/1/2021	Client Authe...	<None>		Domain C...
Certificates	Server1.panda.com	server1-ca	2/2/2021	Client Authe...	<None>		Domain C...
Trusted Root Ce	Server1.panda.com	server1-ca	3/1/2021	Client Authe...	<None>		Domain C...
Enterprise Trust	server1-ca	server1-ca	2/3/2025	<All>	<None>		Root Cert...
Intermediate Ce							
Trusted Publishe							
Untrusted Certifi							
Third-Party Root							
Trusted People							
Certificate Enrol							
Smart Card Trus							
Trusted Devices							

Actions

Certificates ▲

More Actions ▶



Server Manager
File Action View Help

Server Manager (SERVER1)

- Roles
 - Active Directory Certificate Services
 - Online Responder:
 - Enterprise PKI
 - Certificate Templates (Server1.panda.c)
 - server1-ca
 - Revoked Certificates
 - Issued Certificates
 - Pending Requests
 - Failed Requests
 - Certificate Templates
 - Active Directory Domain Services
 - DHCP Server
 - DNS Server
 - Network Policy and Access Services
 - NPS (Local)
 - RADIUS Clients and Servers
 - RADIUS Clients
 - Remote RADIUS Server Groups
 - Policies
 - Connection Request Policies
 - Network Policies**
 - Health Policies
 - Network Access Protection
 - Accounting
 - Templates Management
 - Routing and Remote Access
 - Web Server (IIS)

Network Policies

Network policies allow you to designate who is authorized to connect to the network and the circumstances under which they can or cannot connect.

Policy Name	Status	Processing Order	Access Type	Source
Aruba-Dot1	Enabled	1	Grant Access	Unspecified
Connections to Microsoft Routing and Remote Access server	Enabled	999998	Deny Access	Unspecified
Connections to other access servers	Enabled	999999	Deny Access	Unspecified

Aruba-Dot1

Conditions - If the following conditions are met:

Condition	Value
User Groups	PANDA\IT
NAS Port Type	Wireless - IEEE 802.11

Settings - Then the following settings are applied:

Setting	Value
Authentication Method	EAP
Access Permission	Grant Access
Update Noncompliant Clients	True

Actions
Network Policies

- New
- Export List
- View
- Refresh
- Help

Aruba-Dot1

- Move Up
- Move Down
- Disable
- Delete
- Rename
- Duplicate Policy
- Properties
- Help

Windows Server 2008 R2 x64

Aruba-Dot1 Properties

Overview Conditions Constraints Settings

Policy name:

Aruba-Dot1

Policy State

If enabled, NPS evaluates this policy while performing authorization. If disabled, NPS does not evaluate this policy.

☒ Policy enabled

Access Permission

If conditions and constraints of the network policy match the connection request, the policy can either grant access or deny access.

[What is access permission?](#)☒ Grant access. Grant access if the connection request matches this policy.☐ Deny access. Deny access if the connection request matches this policy.☐ Ignore user account dial-in properties.

If the connection request matches the conditions and constraints of this network policy and the policy grants access, perform authorization with network policy only; do not evaluate the dial-in properties of user accounts.

Network connection method

Select the type of network access server that sends the connection request to NPS. You can select either the network access server type or Vendor specific, but neither is required. If your network access server is an 802.1X authenticating switch or wireless access point, select Unspecified.

☒ Type of network access server:

Unspecified

☐ Vendor specific:

10

Work and the circumstances under

Access Type	Source
Grant Access	Unspecified
Deny Access	Unspecified
Deny Access	Unspecified

Actions

Network Policies

New

Export List

View

Refresh

Help

Aruba-Dot1

Move Up

Move Down

Disable

Delete

Rename

Duplicate Policy

Properties

Help

Aruba-Dot1 Properties

Overview Conditions Constraints Settings

Configure the constraints for this network policy.

If all constraints are not matched by the connection request, network access is denied.

Constraints:

Constraints

Authentication Methods

- Idle Timeout
- Session Timeout
- Called Station ID
- Day and time restrictions
- NAS Port Type

Allow access only to those clients that authenticate with the specified methods.

EAP types are negotiated between NPS and the client in the order in which they are listed.

EAP Types:

Microsoft: Protected EAP (PEAP)

Move Up

Move Down

Add...

Edit...

Remove

Less secure authentication methods:

- ☐ Microsoft Encrypted Authentication version 2 (MS-CHAP-v2)
 - ☐ User can change password after it has expired
- ☐ Microsoft Encrypted Authentication (MS-CHAP)
 - ☐ User can change password after it has expired
- ☐ Encrypted authentication (CHAP)
- ☐ Unencrypted authentication (PAP, SPAP)
- ☐ Allow clients to connect without negotiating an authentication method
- ☐ Perform machine health check only

Work and the circumstances under

Access Type	Source
Grant Access	Unspecified
Deny Access	Unspecified
Deny Access	Unspecified

Actions

Network Policies

New

Export List

View

Refresh

Help

Aruba-Dot1

Move Up

Move Down

Disable

Delete

Rename

Duplicate Policy

Properties

Help

Aruba-Dot1 Properties

Edit Protected EAP Properties

Select the certificate the server should use to prove its identity to the client. A certificate that is configured for Protected EAP in Connection Request Policy will override this certificate.

Certificate issued to: Server1.panda.com

Friendly name: Server1.panda.com

Issuer: server1-ca

Expiration date: 3/1/2021 9:23:33 PM

☒ Enable Fast Reconnect

☐ Disconnect Clients without Cryptobinding

Eap Types

Secured password (EAP-MSCHAP v2)

Move Up Move Down

Add Edit Remove OK Cancel

☐ Microsoft Encrypted Authentication (MS-CHAP)

☐ Encrypted authentication (CHAP)

☐ Unencrypted authentication (PAP, SPAP)

☐ Allow clients to connect without negotiating an authentication method

☐ Perform machine health check only

Aruba-Dot1 Properties

Actions

Network Policies

New

Export List

View

Refresh

Help

Aruba-Dot1

Move Up

Move Down

Disable

Delete

Rename

Duplicate Policy

Properties

Help

Access Type	Source
Grant Access	Unspecified
Deny Access	Unspecified
Deny Access	Unspecified

Aruba-Dot1 Properties

Edit Protected EAP Properties

Select the certificate the server should use to prove its identity to the client. A certificate that is configured for Protected EAP in Connection Request Policy will override this certificate.

Certificate issued to: Server1.panda.com

Friendly name:

Issuer: server1-ca

Expiration date: 3/1/2021 9:34:53 PM

☒ Enable Fast Reconnect

☐ Disconnect Clients without Cryptobinding

Eap Types

Secured password (EAP-MSCHAP v2)

Move Up Move Down

Add Edit Remove OK Cancel

☐ Microsoft Encrypted Authentication (MS-CHAP)

☐ Encrypted authentication (CHAP)

☐ Unencrypted authentication (PAP, SPAP)

☐ Allow clients to connect without negotiating an authentication method

☐ Perform machine health check only

Access Type	Source
Grant Access	Unspecified
Deny Access	Unspecified
Deny Access	Unspecified

Actions

Network Policies

New

Export List

View

Refresh

Help

Aruba-Dot1

Move Up

Move Down

Disable

Delete

Rename

Duplicate Policy

Properties

Help