

# *Palo Alto Networks*



## ***Palo Alto Networks at a glance***

Founded in **2005**; first customer shipment in **2007**

More than **42,500 customers** in **150+ countries**

FY17 **\$1.8B revenue**,  
**28% YoY growth** that significantly outpaced the industry

Over **85** of the Fortune 100 and **60%** of the Global 2000 rely on us

Excellent global support, awarded by **J.D. Power** and **TSIA**

Experienced team of more than **4,300** employees

## ***Palo Alto Networks “Turkey” at a glance***

- 7 field sales teams, 20 people in total
- Highest growth rate in our EMER region (~100%)
- 1000 customers in Turkey
- High penetration within banking and finance vertical

# PREVENTING SUCCESSFUL CYBERATTACKS

Network

Endpoint

Cloud

 Visibility

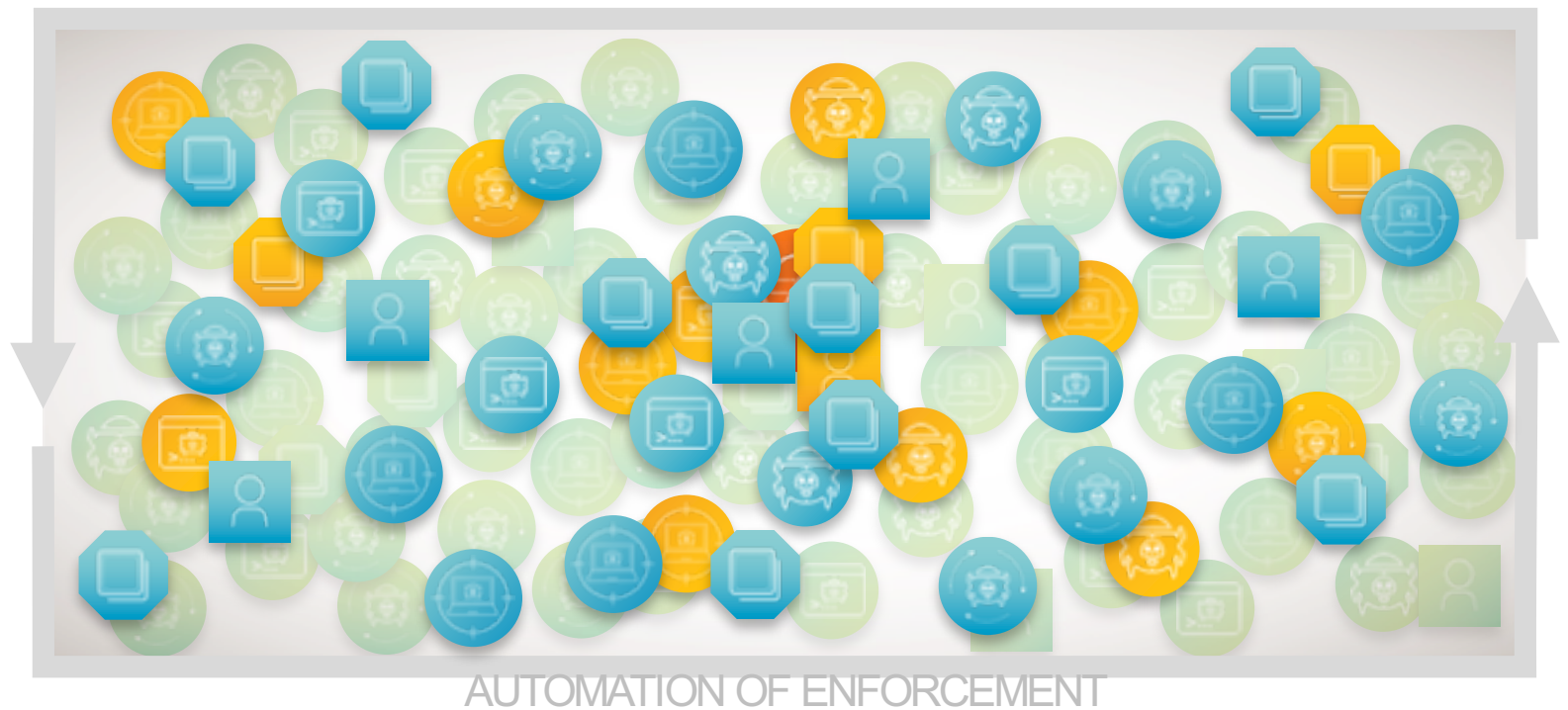


# PREVENTING SUCCESSFUL CYBERATTACKS

REDUCE MANUAL EFFORT WITH ANALYTICS

 **Visibility**

 **Reduce attack surface**



# PREVENTING SUCCESSFUL CYBERATTACKS

REDUCE MANUAL EFFORT WITH ANALYTICS

- **Visibility**
- **Reduce attack surface**
- **Prevent known threats**



# PREVENTING SUCCESSFUL CYBERATTACKS

REDUCE MANUAL EFFORT WITH ANALYTICS

- **Visibility**
- **Reduce attack surface**
- **Prevent known threats**
- **Prevent unknown threats**



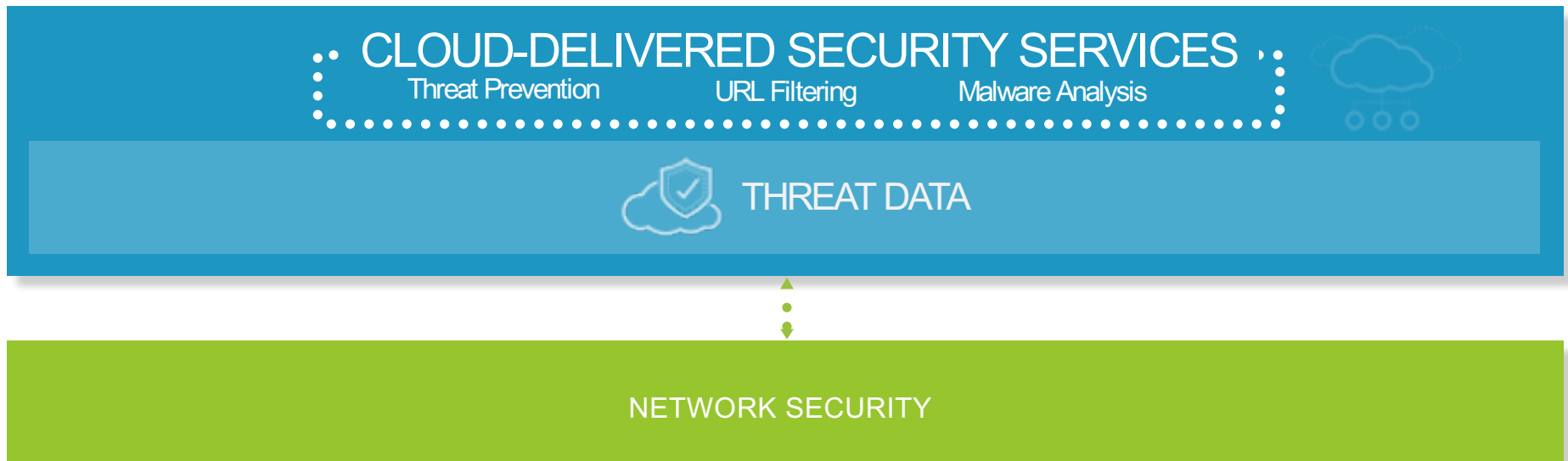


**HOW?**



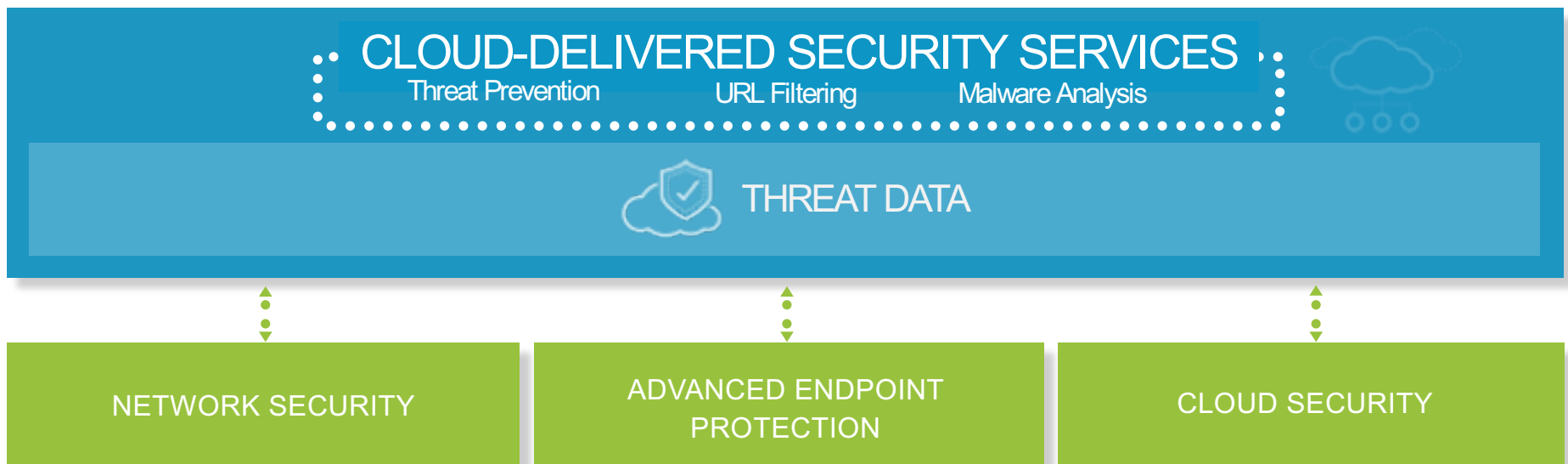
# ***PALO ALTO NETWORKS SECURITY OPERATING PLATFORM***

## EVOLUTION I



# ***PALO ALTO NETWORKS SECURITY OPERATING PLATFORM***

## EVOLUTION II



# EVOLUTION III



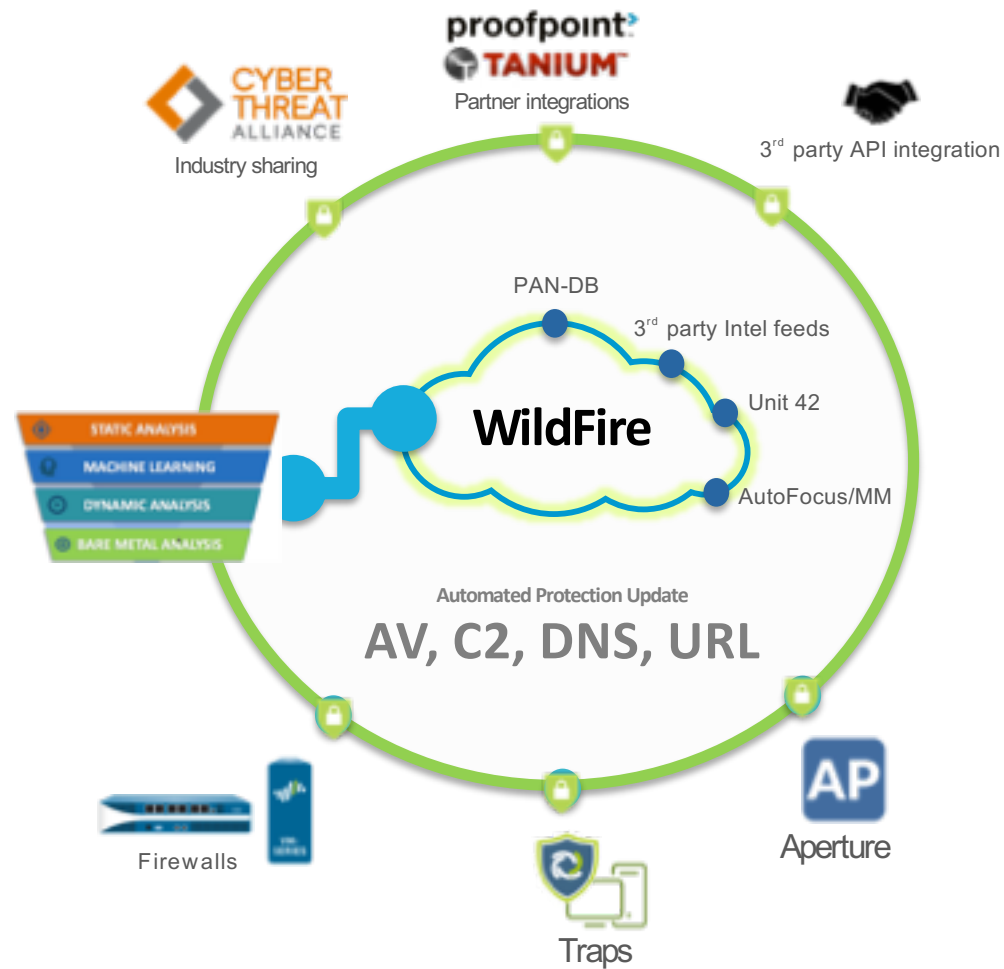
# Better Protection

**230,000**

Content Based  
Protections per day

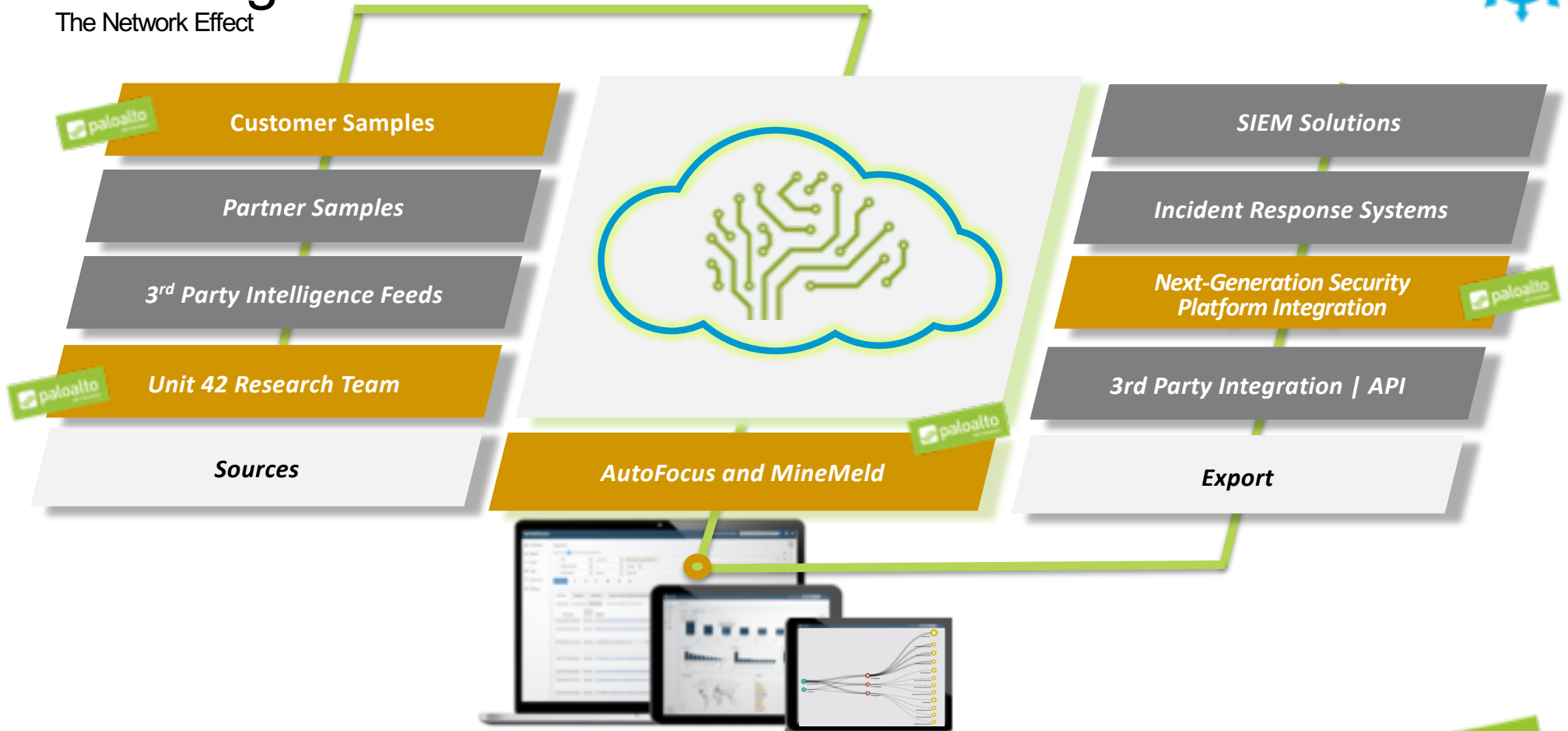
**5min**

Automated Protection  
Update



# Leverage

The Network Effect

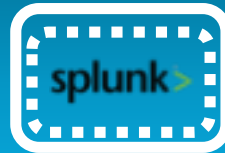


## ***MINEMELD - The multi-tool of Threat Indicators feeds***

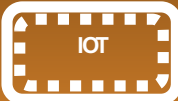
- Enforce indicators from various Threat Intelligence feeds
- Generate feeds of indicators from Palo Alto Networks platforms
- Share indicators with trusted peers
- Support for Palo Alto Networks specific features: EDLs, DAG, logs, ...



# PARTNER ECOSYSTEM



## STRATEGIC PARTNERSHIPS



## TECHNOLOGY PARTNER ECOSYSTEM



## GSI



## SERVICE PROVIDERS







# PARTNER ECOSYSTEM

## CLOUD



## THREAT INTELLIGENCE



## VIRTUALIZATION



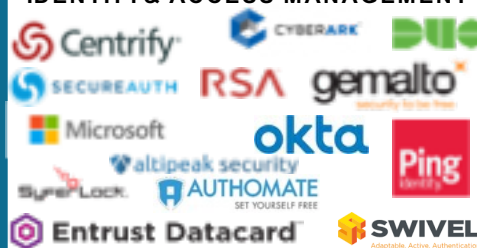
## ENTERPRISE SECURITY



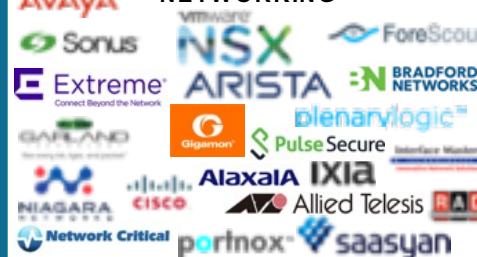
## SD-WAN



## IDENTITY & ACCESS MANAGEMENT



## NETWORKING



## SECURITY ANALYTICS



## IOT



## MOBILITY



## ORCHESTRATION & SECURITY

### AUTOMATION

