

atmosphere'23

BELGIUM



Because VPN's need a vacation too

Jan-Willem Keinke, Pre-Sales SE

19 October 2023

SASE explained on a single slide

SASE is Secure SD-WAN plus SSE

Secure SD-WAN

- SaaS Acceleration
- WAN Optimization
- Tunnel Bonding
- Zero-Touch Provisioning
- Data Encryption
- Next-generation Firewall
- Granular Segmentation
- IDS/IPS and DDoS Protection



Security Service Edge (SSE)

- Zero Trust Network Access
- Cloud Access Security Broker
- Secure Web Gateway
- Firewall as a Service
- Remote Browser Isolation
- Data Loss Prevention
- Sandboxing

Delivered With The HPE Aruba SASE Portfolio

Secure Service Edge (SSE)



Zero Trust Network Access (ZTNA)

PRIVATE APPLICATIONS

VPN Alternative – better UX, safer (Zero Trust), users not on network

Secure Web Gateway (SWG)

INTERNET ACCESS

Web proxy alternative – replace outbound security stack in DC

Cloud Access Security Broker (CASB)

SaaS APPLICATIONS

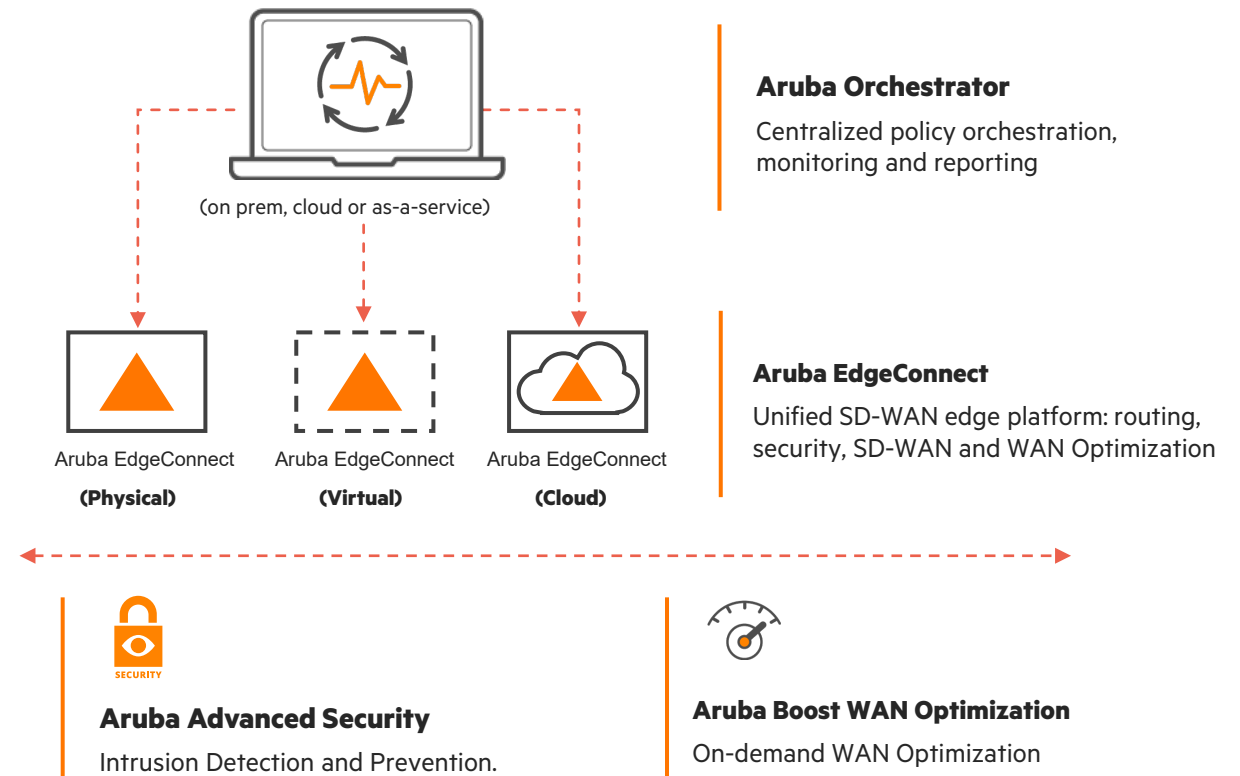
Protect users and data when using SaaS applications

Digital Experience Monitoring

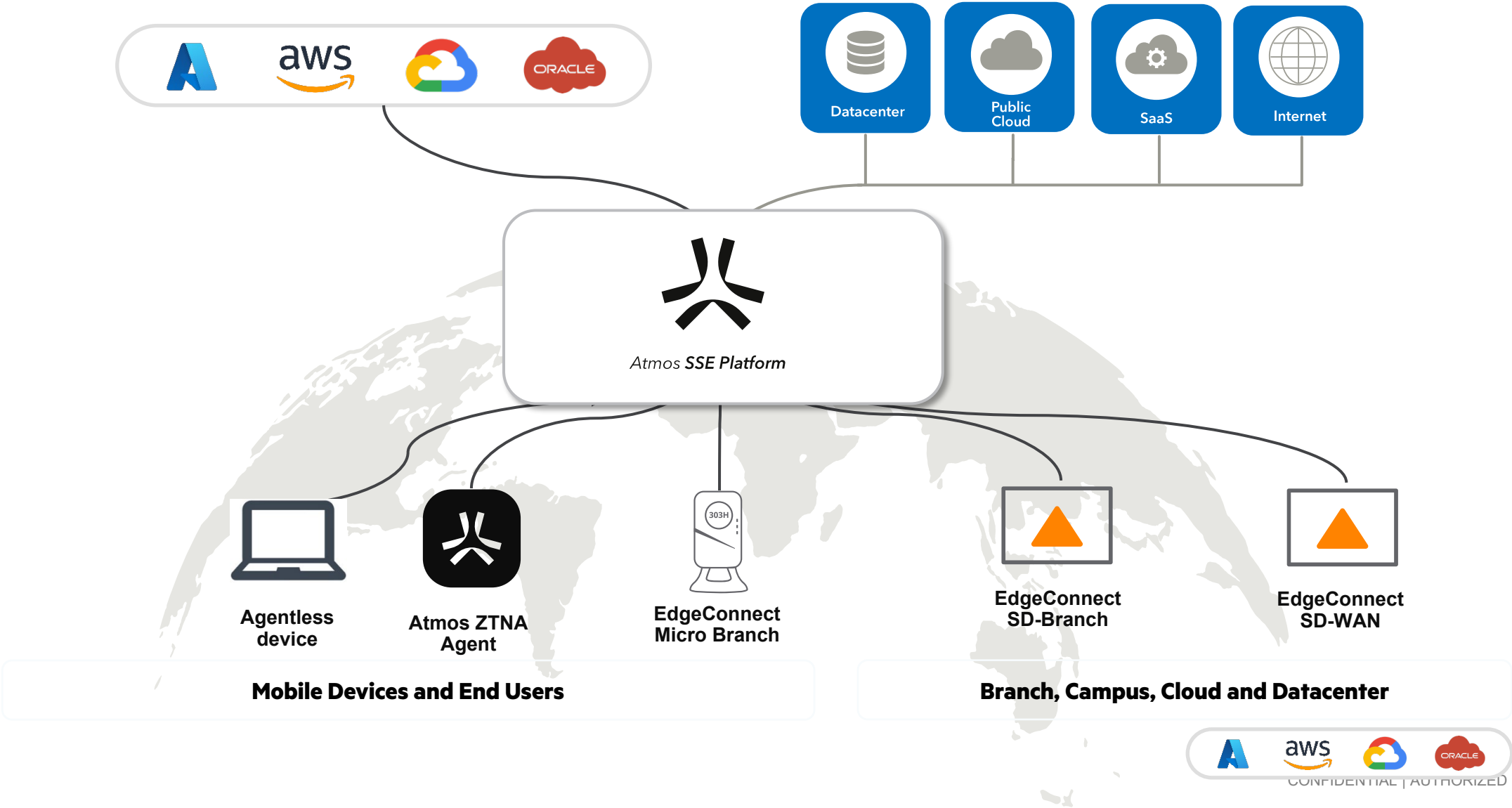
PERFORMANCE MONITORING

Visibility – end to end view on user experience. Transform support desk.

Software Defined WAN (SD-WAN)



Aruba SASE architecture



Our differentiators – how we are better!

Unified access platform

Single: UI, policy engine, & data lake
(ZTNA, SWG, CASB, DEM)

Benefit: Significantly reduces management/operational overhead + reduces complexity

Simplify policy & inspect all traffic

for Internet, SaaS, and legacy apps
(SSH, RDP, VOIP, AS400, ICMP etc.)

Benefit: Inspect more than just SSL

Multi-cloud backbone with Smart Routing

Harmonized access across the world with 350 NW acceleration
on-ramps leveraging Azure, AWS, GCP, & Oracle

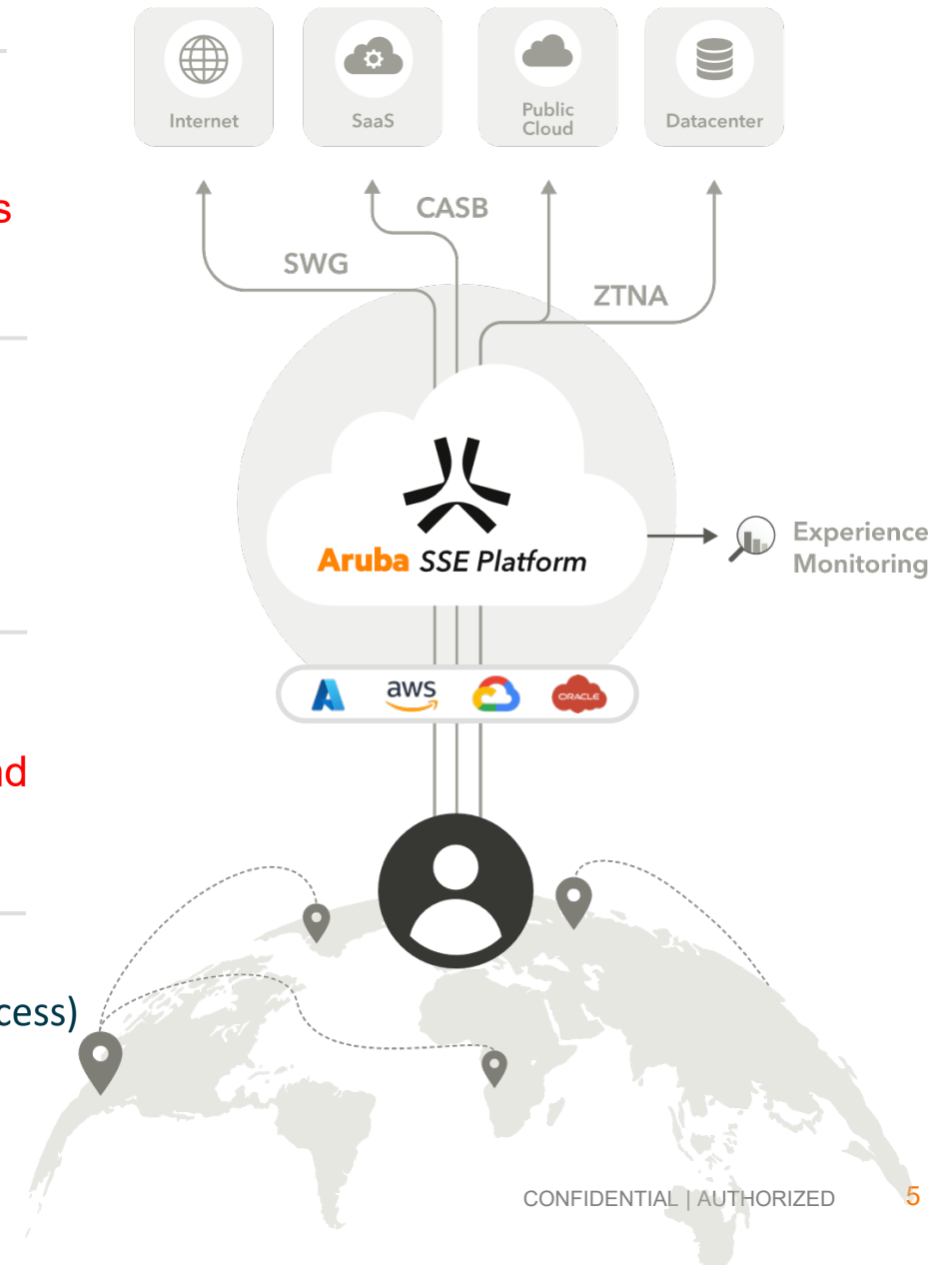
Benefit: Ever expanding connectivity options. Offer the best connectivity and performance anywhere

Agent or Agentless Zero Trust access

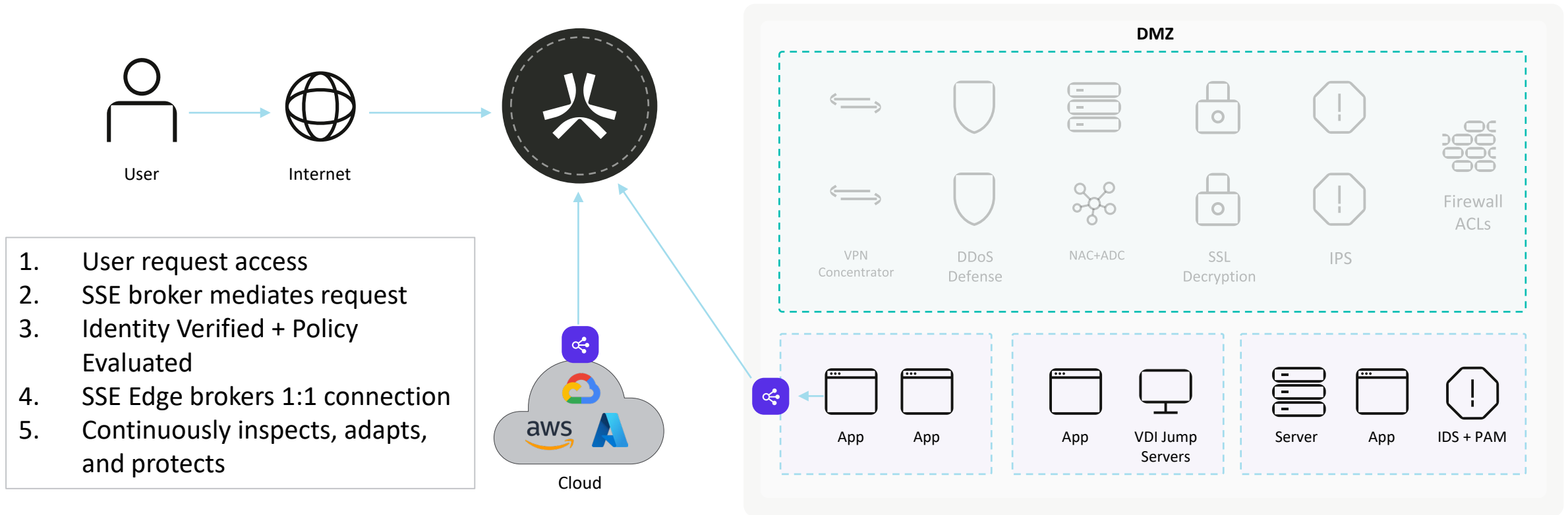
Agent – full SSE platform (parity with VPN capabilities)

Agentless – Zero Trust access to private Apps (Web/SSH/RDP/VNC/Git/DB Access)

Benefit: Completely eliminate VPN (incl. legacy e.g. VOIP) & support clientless 3rd party access



Axis delivers zero trust access for all



The invisible network.

Inside-out connections make apps completely invisible and never exposed to the internet.

Application access, never network access.

Remote users only receive access to authorized applications without placing user or device on the corporate network.

Granular least privilege access.

App-to-user connections provide built-in app segmentation without complex network segmentation. One-to-one connections make lateral movement impossible for unauthorized users.

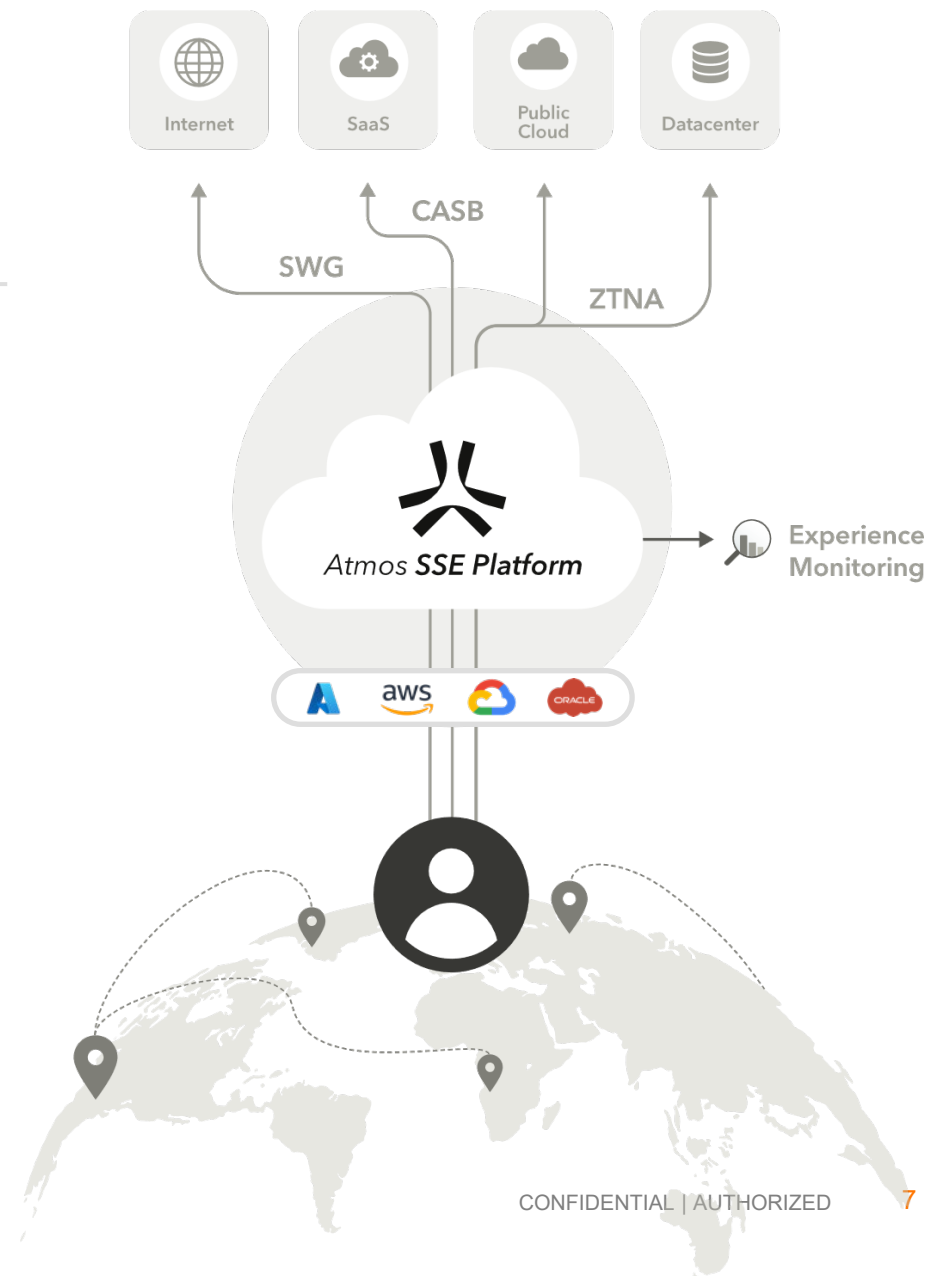
Why Aruba's SSE 2.0 Platform?

We focus on a unified access platform approach

We simplify policy & inspect traffic for Internet, SaaS, and legacy apps (SSH, RDP, VOIP, AS400, ICMP etc.)

We harmonize access across the world via a cloud-backbone of AWS, Azure, Google and Oracle

We enable users to access resources with or without an agent



Three-tiered cloud architecture

Tier 1 – Major cloud providers

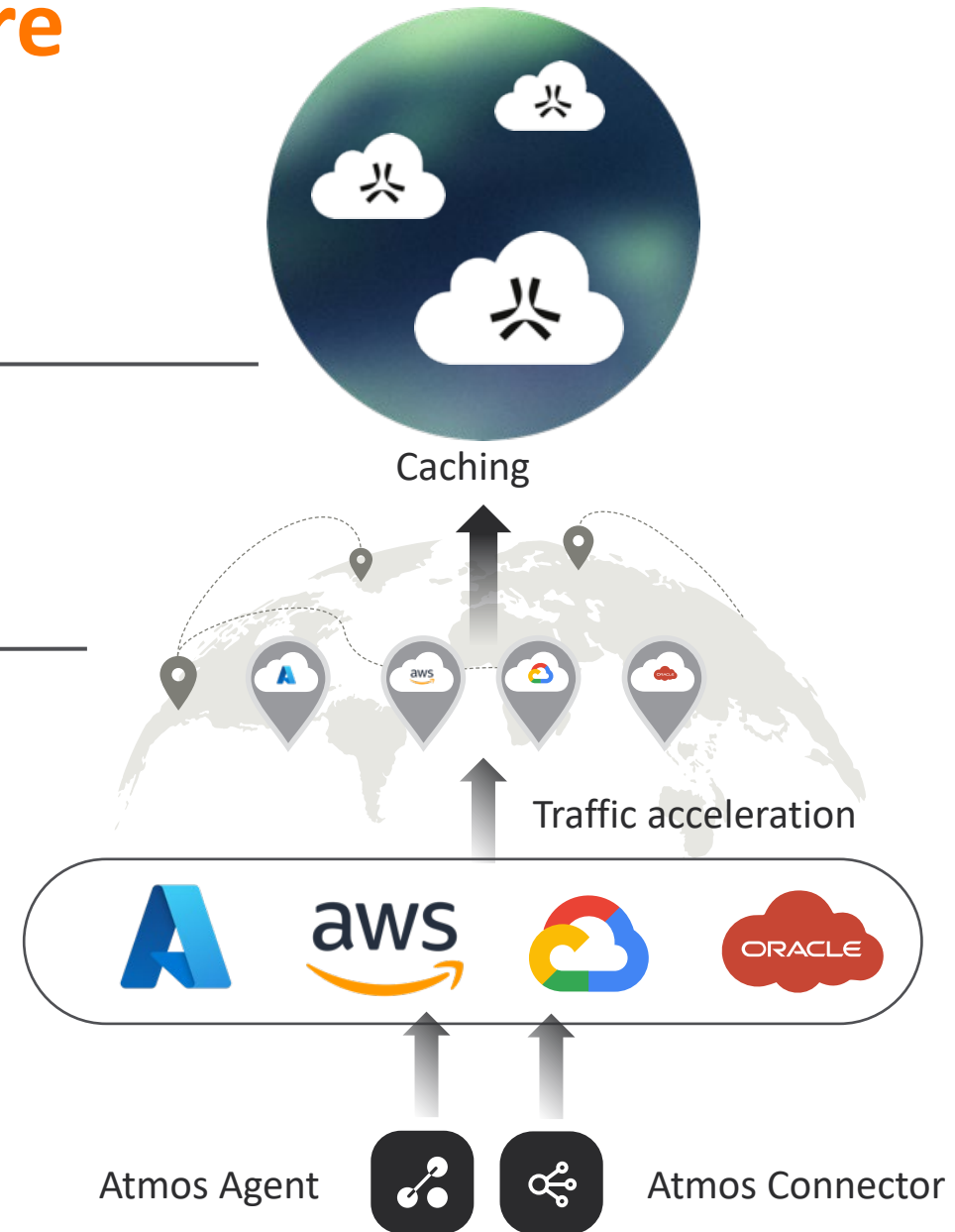
Main Clusters

Tier 2 – Cloud providers & local hosting services

Local PoPs

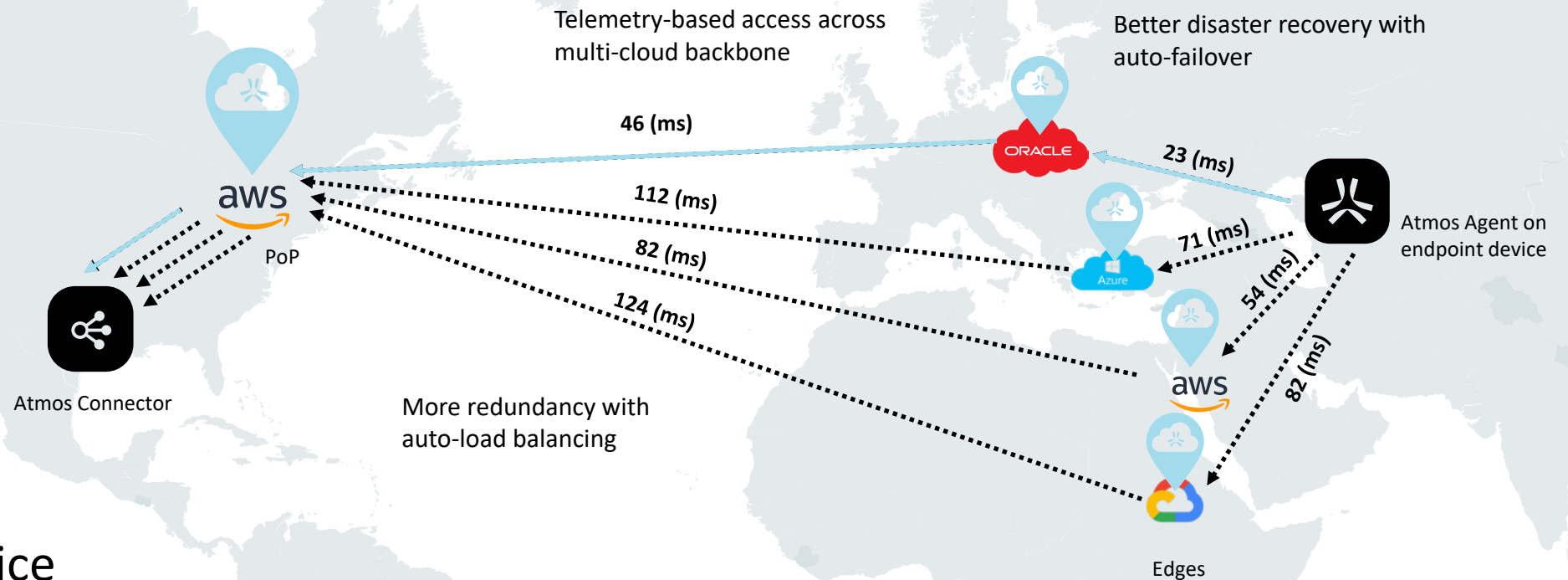
Tier 3 – Peered to local ISPs across the world

350 Edge Locations



Distributed cloud architecture:

High reliability, availability, and scale



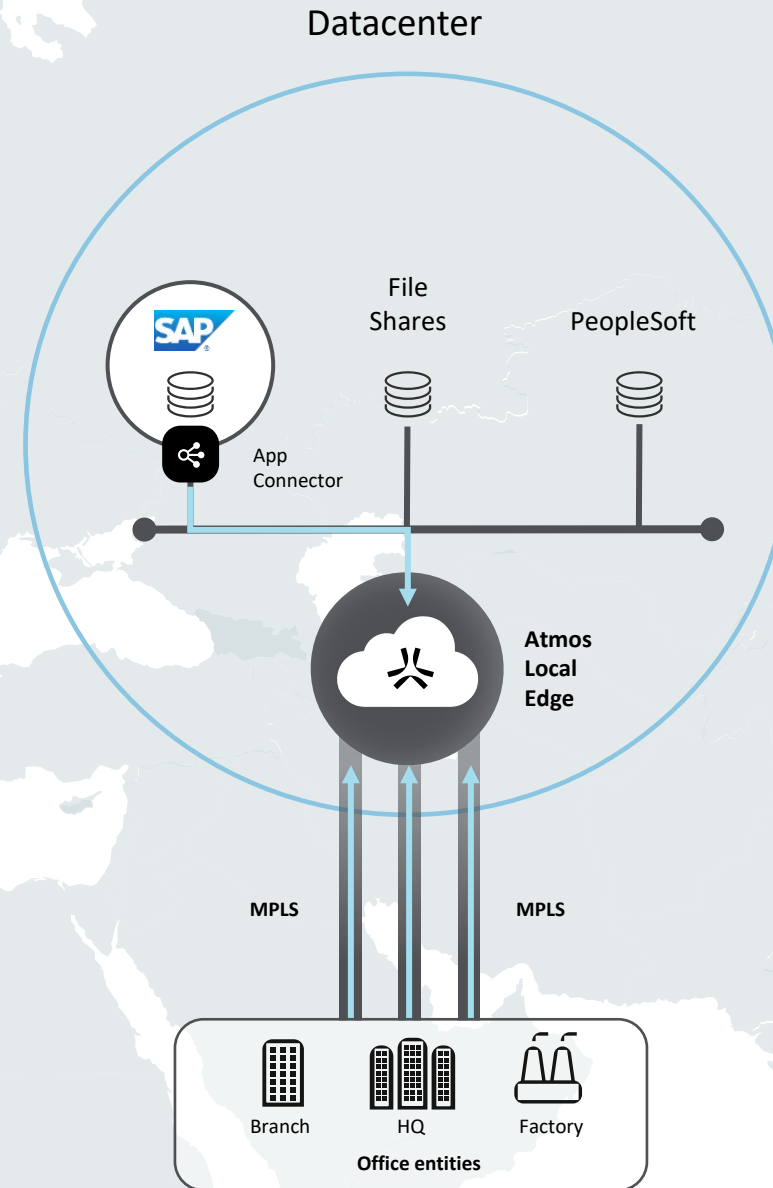
Network-as-a-Service

- Geo-proximity routing
- Smart routing based on latency
- Extremely high availability

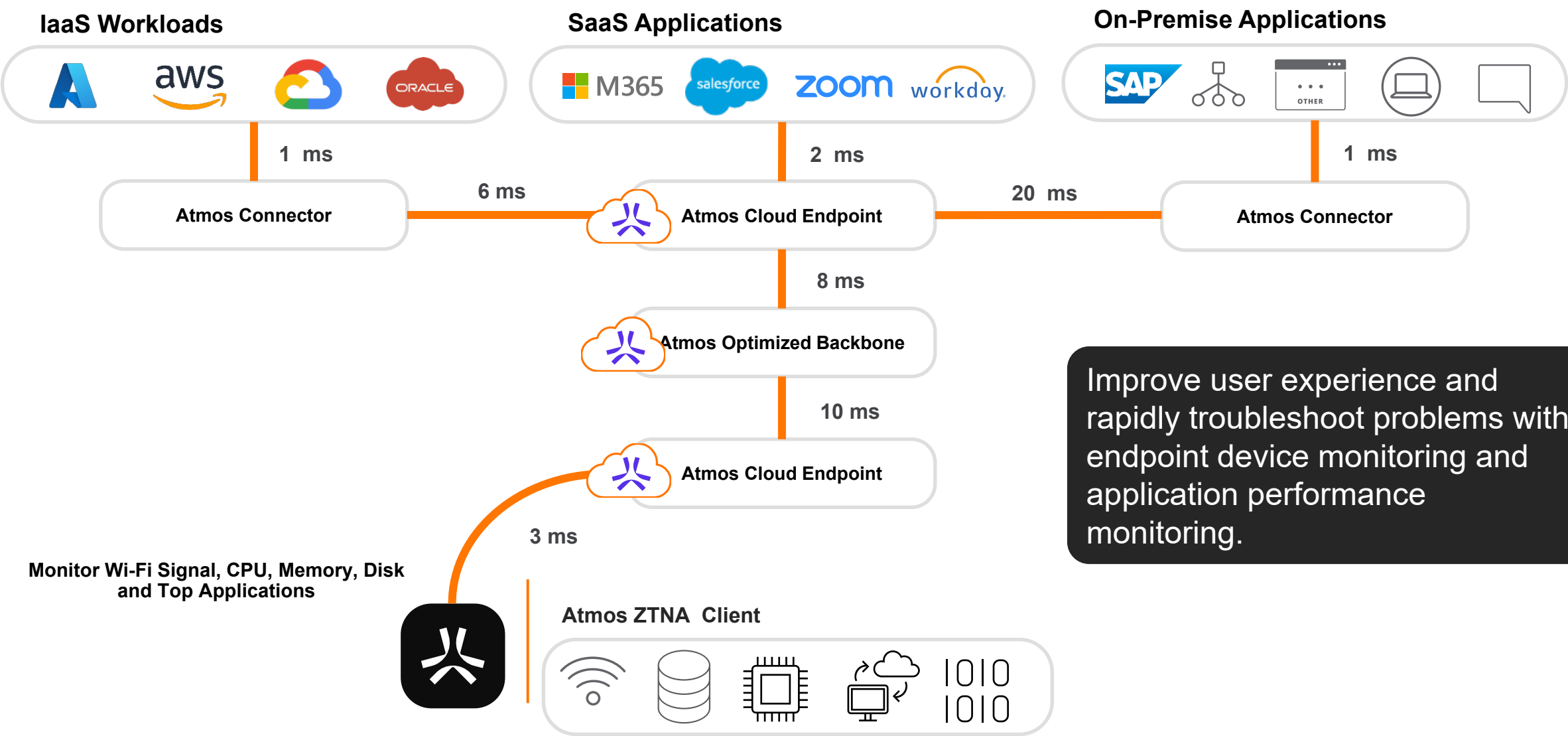
Bring zero trust on-premises

Think global. Act local.

- No hairpin to Internet-based PoPs
- Faster user experience
- Support all private user traffic (agent-based)
- Comply with regulations



Amplify User Experience



Improve user experience and rapidly troubleshoot problems with endpoint device monitoring and application performance monitoring.

Agent vs Agentless

What's the difference

Agent

- Support for MacOS, iOS, Windows, Linux & Android
- Creates a Virtual Network Adapter that is connected to the Atmos cloud.
- Supports all TCP/UDP based applications
- Allows rules based on device posture. (AV status, installed apps, Disk encryption, patch status, rooted and much [more](#))
- Reports on Client details, stats on CPU, RAM and disk
- SSL inspection with Atmos root certificate
- Installed by User or via Device management

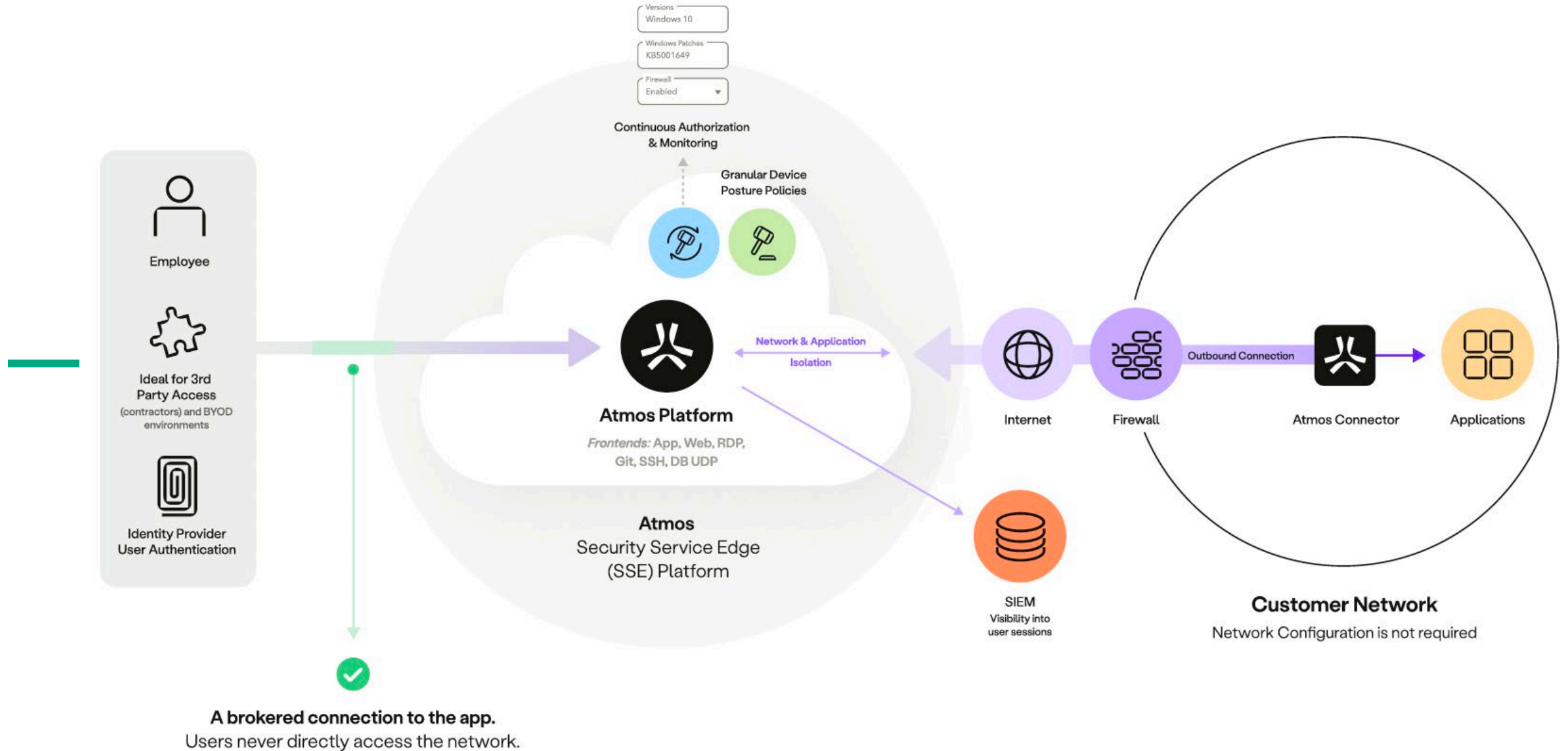
Agentless

- Supports any client. BYOD, Contractors, Cameras, HVAC, IoT
- Needs traffic to be routed to the Atmos cloud (i.e. SD-WAN)
- Limited App support: Web, RDP, SSH, Git and MS-SQL database
- SSL inspection possible when Atmos root-certificate installed

The background features a complex, abstract design. It consists of large, overlapping organic shapes in vibrant red and purple. These shapes are layered, creating a sense of depth. Within these colored areas, there are various patterns: some have fine horizontal lines, others have a dense dot pattern, and some are solid. The overall effect is a modern, energetic, and visually rich composition.

Demo

EdgeConnect SSE - ZTNA



An Inside Look At HPE Aruba Networking SSE

Policy

Search... Last changes applied on June 13th 7:55 am

Apply Changes | john.smith@hpe.com

New Rule

Priority	Enabled	Name	Users	Context	Destinations	Action	Profiles
1	<input checked="" type="checkbox"/>	High Risk Nations	Any	<div><div>Iraq</div><div>Russia</div><div>North Korea</div></div>	Any Application	<div><div>Block</div></div>	Default Profiles
2	<input checked="" type="checkbox"/>	Block Malware, Gambling, Dropbox ..	<div><div>Daniel Parelskin</div><div>HPE Demo</div><div>Axis IDP Users</div><div>All Full Time Emplo..</div></div>	<div><div>Windows Baseline</div><div>Mac Baseline</div></div>	<div><div>DropBox - Managed</div><div>Box Managed</div><div>Phishing and Other ..</div><div>Pornography and A..</div><div>Malware Sites</div><div>And 5 more...</div></div>	<div><div>Block</div></div>	<div><div>Client SSL Inspecti..</div><div>And 6 Default Profiles</div></div>
3	<input checked="" type="checkbox"/>	All Employees - Managed Devices	<div><div>HPE Demo</div><div>Darren Tidwell</div><div>Dan Parelskin</div><div>Axis IDP Users</div><div>All Full Time Emplo..</div></div>	<div><div>Windows Baseline</div><div>Mac Baseline</div><div>iOS Device Posture</div></div>	<div><div>Salesforce</div><div>All Employee Apps</div><div>VOIP</div><div>SSL Exclusion Cate..</div><div>HPE Public Domains</div></div>	<div><div>Allow</div></div>	Default Profiles
4	<input checked="" type="checkbox"/>	Malware Inspection	<div><div>Will Butler</div><div>Joseph Bennett</div><div>Darren Tidwell</div><div>Daniel Parelskin</div><div>AWSSolutionArchit..</div><div>And 2 more...</div></div>	Any	<div><div>Monitored Resourc..</div></div>	<div><div>Allow</div></div>	<div><div>Client SSL Inspecti..</div><div>Malware and PII (log)</div><div>And 5 Default Profiles</div></div>
5	<input checked="" type="checkbox"/>	All Employees - BYOD	<div><div>HPE Demo</div><div>Darren Tidwell</div><div>Axis IDP Users</div><div>All Full Time Emplo..</div></div>	Any	<div><div>All Employee Apps</div><div>SSL Exclusion Cate..</div></div>	<div><div>Allow</div></div>	<div><div>BYOD Policy</div><div>And 6 Default Profiles</div></div>
6	<input checked="" type="checkbox"/>	HR Team - HR Apps	<div><div>Human Resources</div></div>	<div><div>Windows 10 + patch..</div><div>Crowdstrike Enabled</div></div>	<div><div>HR Apps</div></div>	<div><div>Allow</div></div>	Default Profiles
7	<input checked="" type="checkbox"/>	Contractors - Contractor Apps	<div><div>Contractors</div></div>	Any	<div><div>Contractor Apps</div></div>	<div><div>Allow</div></div>	<div><div>Contractors RDP Pr..</div><div>BYOD / Contractor ..</div><div>Contractors Web A..</div><div>Contractors SSH Ra..</div><div>Contractor Git Profi..</div></div>

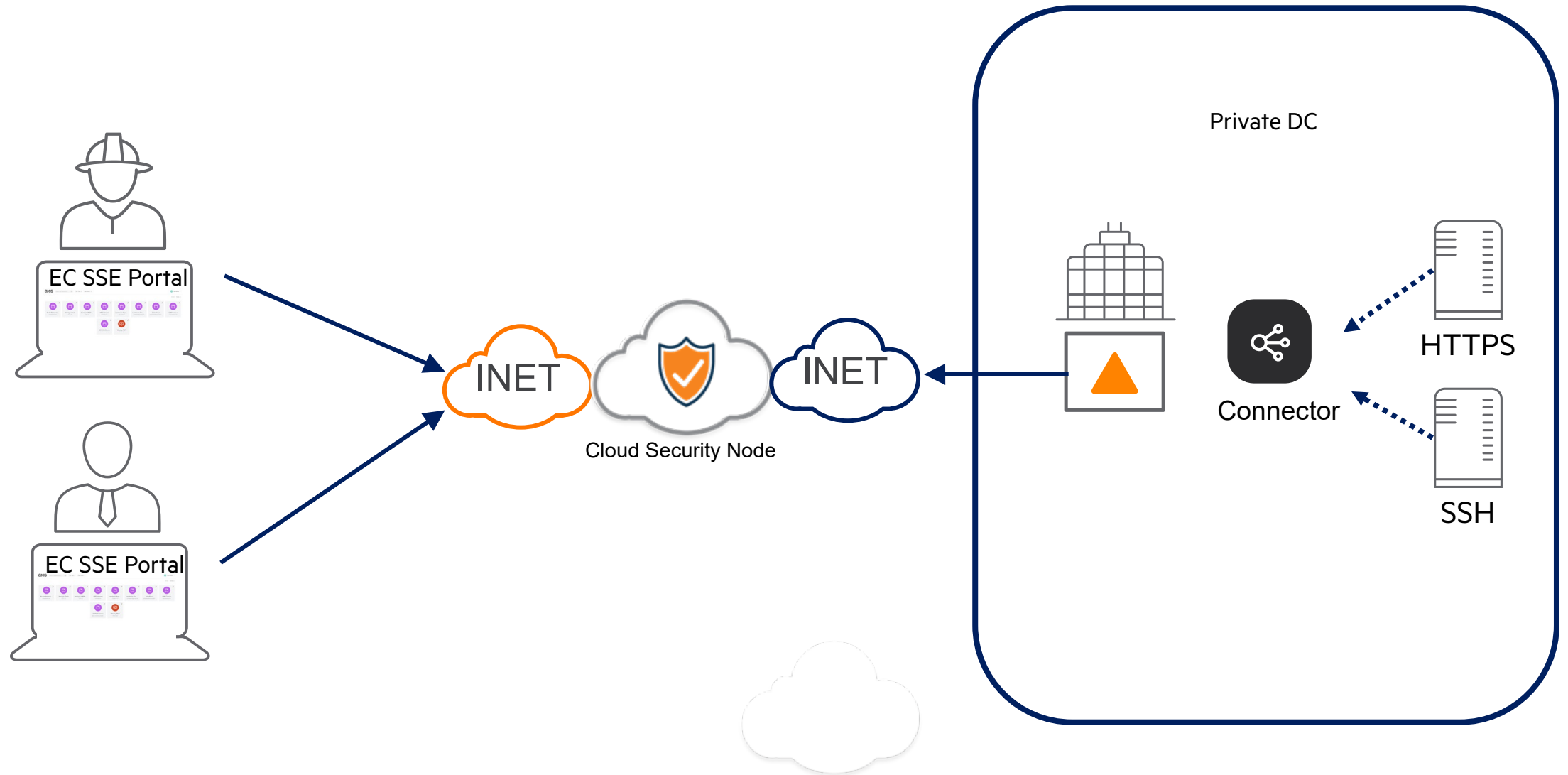
Block access
from risky
destinations

Define access
to internal and
external apps
in a single
policy

Leverage rich
device posture for
context

Use app tags to
simplify
management

Agentless, Secure Remote Access



DEMO #1

Direct access



<https://atmosphere-web-hpearubajanwillemkeinke.axisapps.io/>

DEMO #2



User: atm23
Pass: SecureEdge1

<https://axis-hpearubajanwillemkeinke.axisportal.io/apps>



Thank you

CONFIDENTIAL | AUTHORIZED USE ONLY

Two main sites: Management portal and App portal

Customer identifier, separates
tennants



axis

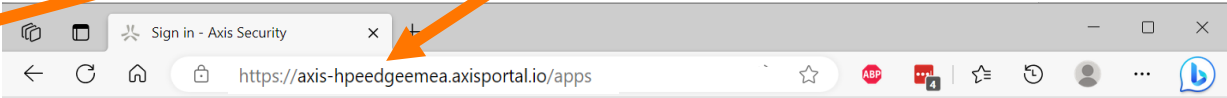
Log in to Management Console

Enter your workspace name

hpeedgeemea

Next

Log in using Axis users



HPE aruba
networking

Log in to Axis User Portal

hpedemo

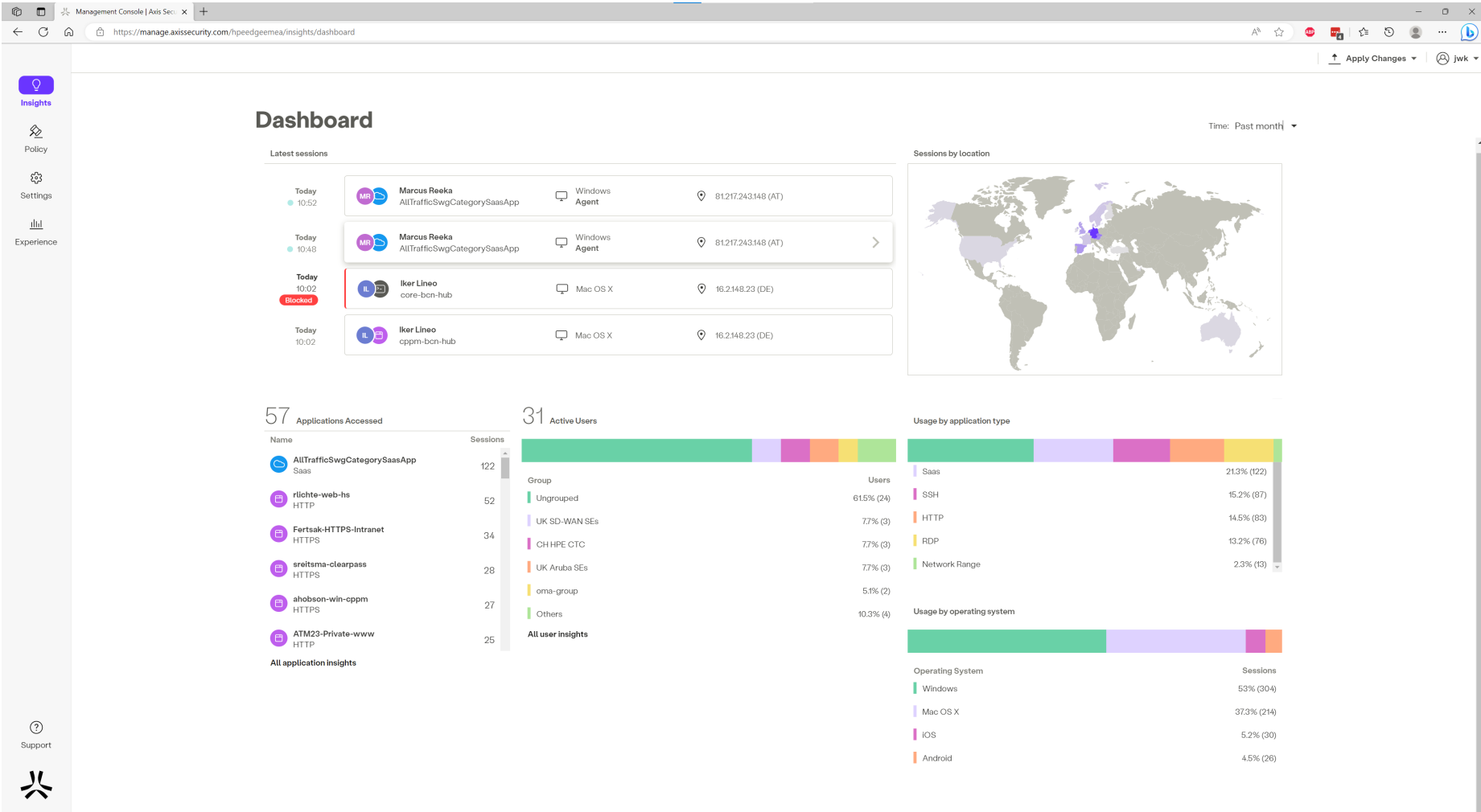
.....

Next

Forgot password?

Customization and alternate
DNS mappings

Management Dashboard



Axis makes policy **impossibly** simple

The screenshot displays the 'Policy' management interface in Axis. The left sidebar contains 'Insights', 'Policy' (selected), 'Settings', and 'Experience'. The main area shows a table of policies with columns: Priority, Enabled, Name, Users, Context, Destinations, Action, and Profiles. A 'Filter..' search bar and a 'New Rule' button are at the top. Annotations highlight specific features: 'Block access from risky destinations' points to the 'High Risk Nations' policy; 'Define access to internal and external apps in a single policy' points to the 'DropBox - Managed' app in the 'Block Malware, Gambling, Dropbox Uploads' policy; 'Leverage rich device posture for context' points to the 'Windows 10 + patches' and 'CrowdStrike Enabled' context items in the 'HR Team - HR Apps' policy.

Priority	Enabled	Name	Users	Context	Destinations	Action	Profiles
1	<input checked="" type="checkbox"/>	SSH internal	Daniel Reisel	Any	Any Application	Allow	Default Profiles
2	<input checked="" type="checkbox"/>	High Risk Nations	Any	Iraq Russia North Korea	Any Application	Block	Default Profiles
3	<input checked="" type="checkbox"/>	Block Malware, Gambling, Dropbox Uploads	All Full Time Employees...	Windows Baseline Mac Baseline	DropBox - Managed Box Managed Pornography and Adult Malware Sites Gambling	Block	Client SSL Inspection And 5 Default Profiles
4	<input checked="" type="checkbox"/>	All Employees - Managed Devices	All Full Time Employees...	Windows Baseline Mac Baseline iOS Device Posture	Salesforce All Employee Apps VOIP SSL Exclusion Category	Allow	Default Profiles
5	<input checked="" type="checkbox"/>	All Employees - BYOD	All Full Time Employees...	Any	All Employee Apps SSL Exclusion Category	Allow	BYOD Policy And 5 Default Profiles
6	<input checked="" type="checkbox"/>	Accounting Team - Accounting Apps	Accounting	Any	Accounting Apps	Allow	Default Profiles
7	<input checked="" type="checkbox"/>	HR Team - HR Apps	Human Resources	Windows 10 + patches CrowdStrike Enabled	HR Apps	Allow	Default Profiles
8	<input checked="" type="checkbox"/>	Contractors - Contractor Apps	Contractors	Any	Contractor Apps	Allow	Contractors RDP Profile

Block access from risky destinations

Define access to internal and external apps in a single policy

Leverage rich device posture for context

Use app tags to simplify management

4		All Employees - Managed Devices	All Full Time Employees...	Windows Baseline Mac Baseline iOS Device Posture	Salesforce All Employee Apps VOIP SSL Exclusion Category	Allow	Default Profiles
5		All Employees - BYOD	All Full Time Employees...	Any	All Employee Apps SSL Exclusion Category	Allow	BYOD Policy And 5 Default Profiles
6		Accounting Team - Accounting Apps	Accounting	Any	Accounting Apps	Allow	Default Profiles
7		HR Team - HR Apps	Human Resources	Windows 10 + patches Crowdstrike Enabled	HR Apps	Allow	Default Profiles
8		Contractors - Contractor Apps	Contractors	Any	Contractor Apps	Allow	Contractors RDP Profile > BYOD / Contractor Policy Contractors Web App Pr... Contractors SSH Range ... Contractor Git Profile Default Client Security P...
9		3rd Parties - Web RDP	Self-Guided Users	Any	3rd Party Apps	Allow	Web-Only > BYOD / Contractor Policy Contractors Web App Pr... Contractors SSH Range ... Contractor Git Profile Default Client Security P...
10		Developer Access	Dev Admins AWSSolutionArchitects...	Any	DevOps AWS SA Team Developer Apps	Allow	Default Profiles
11		Axis App Discovery - Managed Devices	All Full Time Employees...	Windows Baseline Mac Baseline iOS Device Posture	Axis App Discovery	Allow	Default Profiles
Default		Applications Default Rule	Any	Any	Any Application ①	Block	Default Profiles
Default		Web Traffic Default Rule	Any	Any	Web Traffic ①	Allow	Client SSL Inspection And 5 Default Profiles

Securely enable developer workflows

Activity exploration

Unified visibility across all applications

Insights

Policy

Settings

Experience

Support

Demo

Exploration

Last 7 days

Filters

Time	Event Type	Username	HTTP Method	Host	Path	HTTP Status Code	Status	Status Reason	Protocol	Port	Branch Names	Web Category	Source IP	Geo Location	Device Name	Integration Type	Application
03/10/23 13:10:55	DNS request	Michael Seki		eufla-collab-powerpoint..			Success			53		Business and Economy	108.185.52.24	United States		Agent	
03/10/23 13:10:54	View	Justin David Brio..	POST	play.google.com	/log	200	Success		HTTPS	443		Shopping	24.62.133.115	United States		Agent	Google Play
03/10/23 13:10:52	Download	Justin David Brio..	GET	logo.clearbit.com	/lloydsbanking.c..	404	Success		HTTPS	443		Computer and Internet Info	24.62.133.115	United States		Agent	Clearbit
03/10/23 13:10:52	View	Justin David Brio..	GET	mail.google.com	/mail/u/0/	200	Success										
03/10/23 13:10:52	View	Justin David Brio..	GET	mail.google.com	/mail/u/0/	200	Success										
03/10/23 13:10:52	View	Justin David Brio..	GET	chat.google.com	/serviceworker.js	200	Success										
03/10/23 13:10:52	View	Mark Santino	POST	chat.google.com	/u/0/webchanne..	200	Success										
03/10/23 13:10:52	View	Justin David Brio..	GET	clients6.google.com	/drive/v2internal..	200	Success										
03/10/23 13:10:52	View	Justin David Brio..	POST	chat.google.com	/u/0/webchanne..	200	Success										
03/10/23 13:10:52	View	Justin David Brio..	OPTIONS	clients6.google.com	/drive/v2internal..	200	Success										
03/10/23 13:10:52	View	Justin David Brio..	POST	mail.google.com	/mail/u/0/	200	Success										
03/10/23 13:10:52	View	Justin David Brio..	POST	contacts.google.com	/SocialPeopleH..	200	Success										
03/10/23 13:10:52	View	Justin David Brio..	POST	mail.google.com	/cloudsearch/req..	200	Success										
03/10/23 13:10:51	View	Justin David Brio..	POST	contacts.google.com	/SocialPeopleH..	200	Success										
03/10/23 13:10:51	DNS request	Justin David Brio..		contacts.google.com			Success										
03/10/23 13:10:51	View	Justin David Brio..	POST	gs-loc.apple.com	/cills/wloc	200	Success										

Demo

Activity Exploration

Last 30 Minutes

Filters

Clear All Filters

John Smith x Jira x

User = 'John Smith' AND Application = 'Jira'

Total Rows: 546

Time	Event Type	User Name	Domain	URL	Status	Application	Sta
01-12-22 08:08:55	File download	John Smith	download.atlassian.net	/download-document	Block	Jira	Cer
01-12-22 08:08:43	View	John Smith	atlassian.net	/download-files-portal	Success	Jira	
01-12-22 08:08:35	View	John Smith	atlassian.net	/page-does-not-exist	Error	Jira	Cer
01-12-22 08:08:22	File upload	John Smith	upload.atlassian.net	/upload-document	Block	Jira	
01-12-22 08:08:12	View	John Smith	atlassian.net	/software/jira/product-discovery	Success	Jira	DN
01-12-22 08:08:12	DNS Request	John Smith	atlassian.net		Success	Jira	DN

Operation System

Windows (60%) iOS (40%)

Event Type

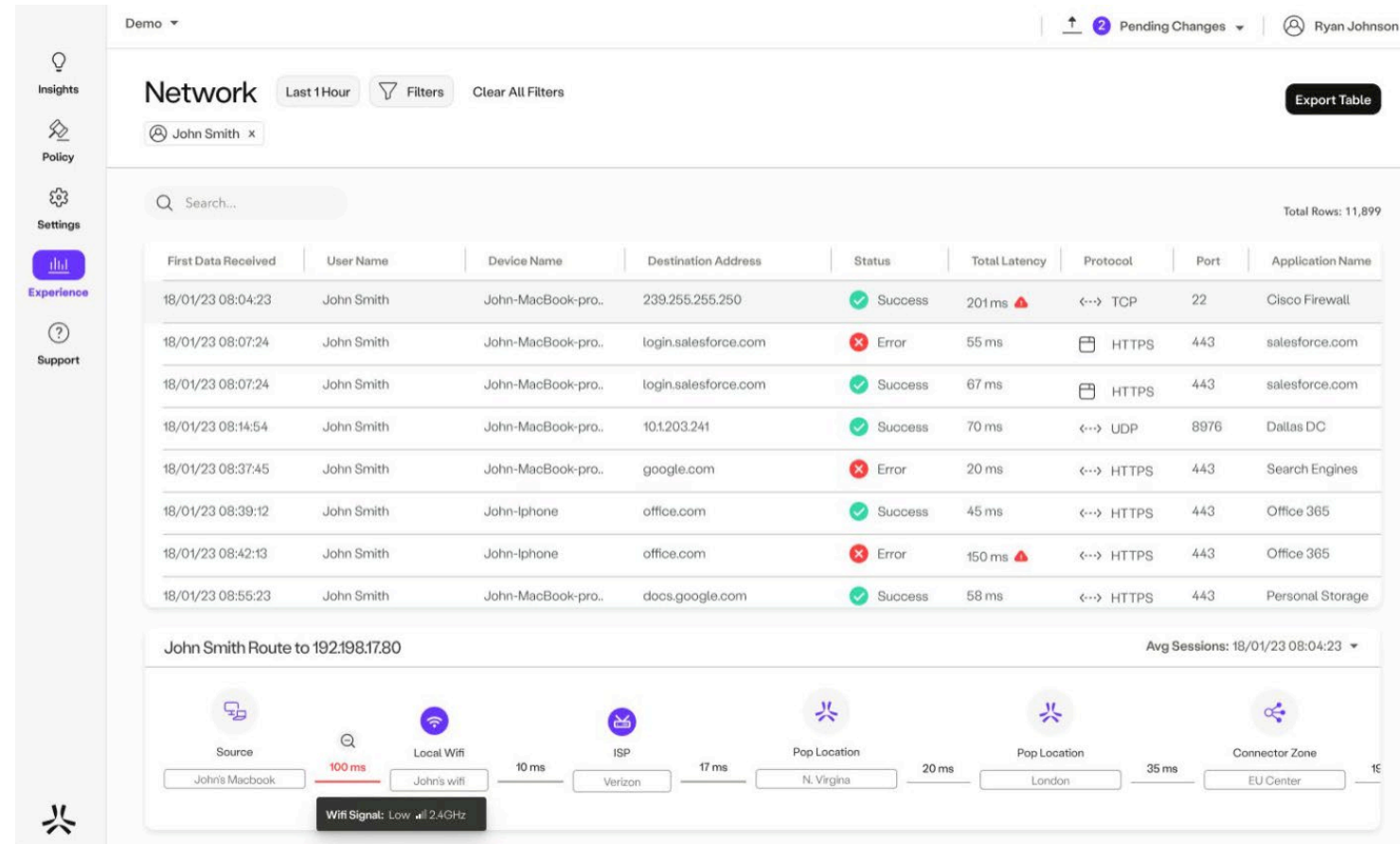
Page View (35%) File Upload (27%) Login (28%) File Download (10%)

Status

Success (65%) Error (25%) Block (10%)

And Ensure a Great User Experience

- Dynamic monitoring of user experience issues
- Endpoint telemetry i.e. CPU, resource consumption, memory use
- Unified application health monitoring
- Hop by hop network path metrics between users and business apps



atmosphere'23

BELGIUM



Building a secure Edge

Jan-Willem Keinke
Sales Engineer SD-WAN Benelux
Email: jwk@hpe.com

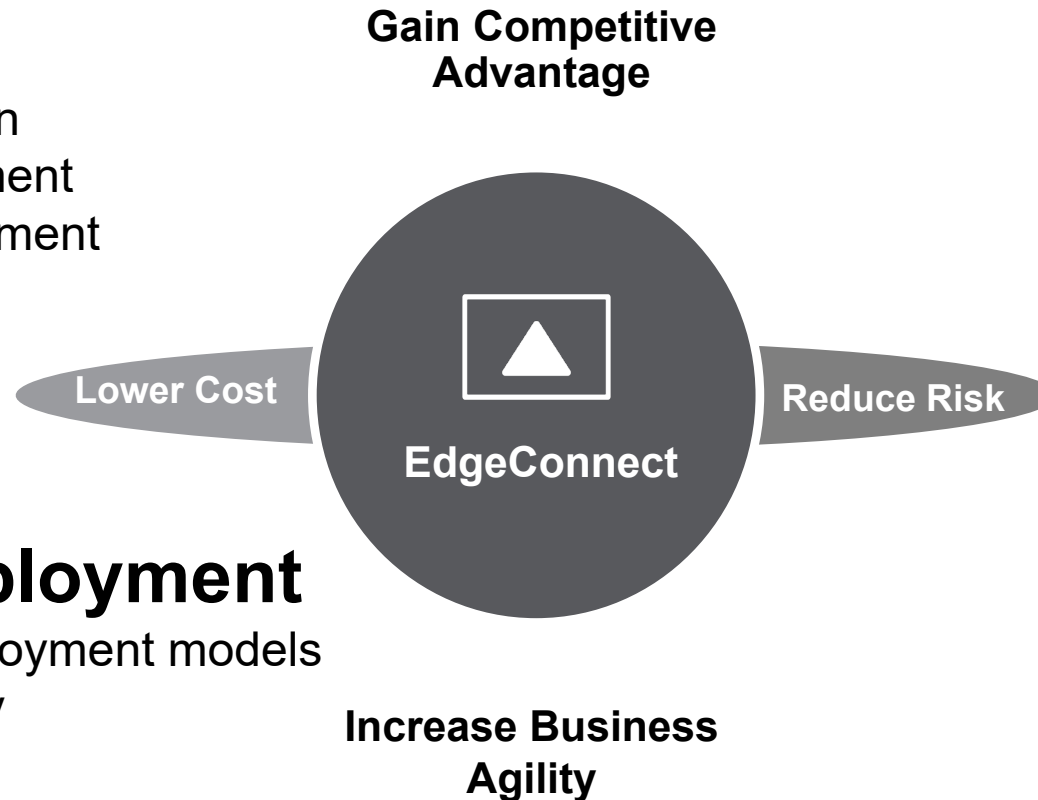
ADVANTAGES OF AN APPLICATION DRIVEN WAN

Savings

- WAN cost savings
- Automation savings
- Cloud security integration
- Eliminate branch equipment
- Simplified edge management

100x Faster Deployment

- Simple and flexible deployment models
- Comprehensive visibility



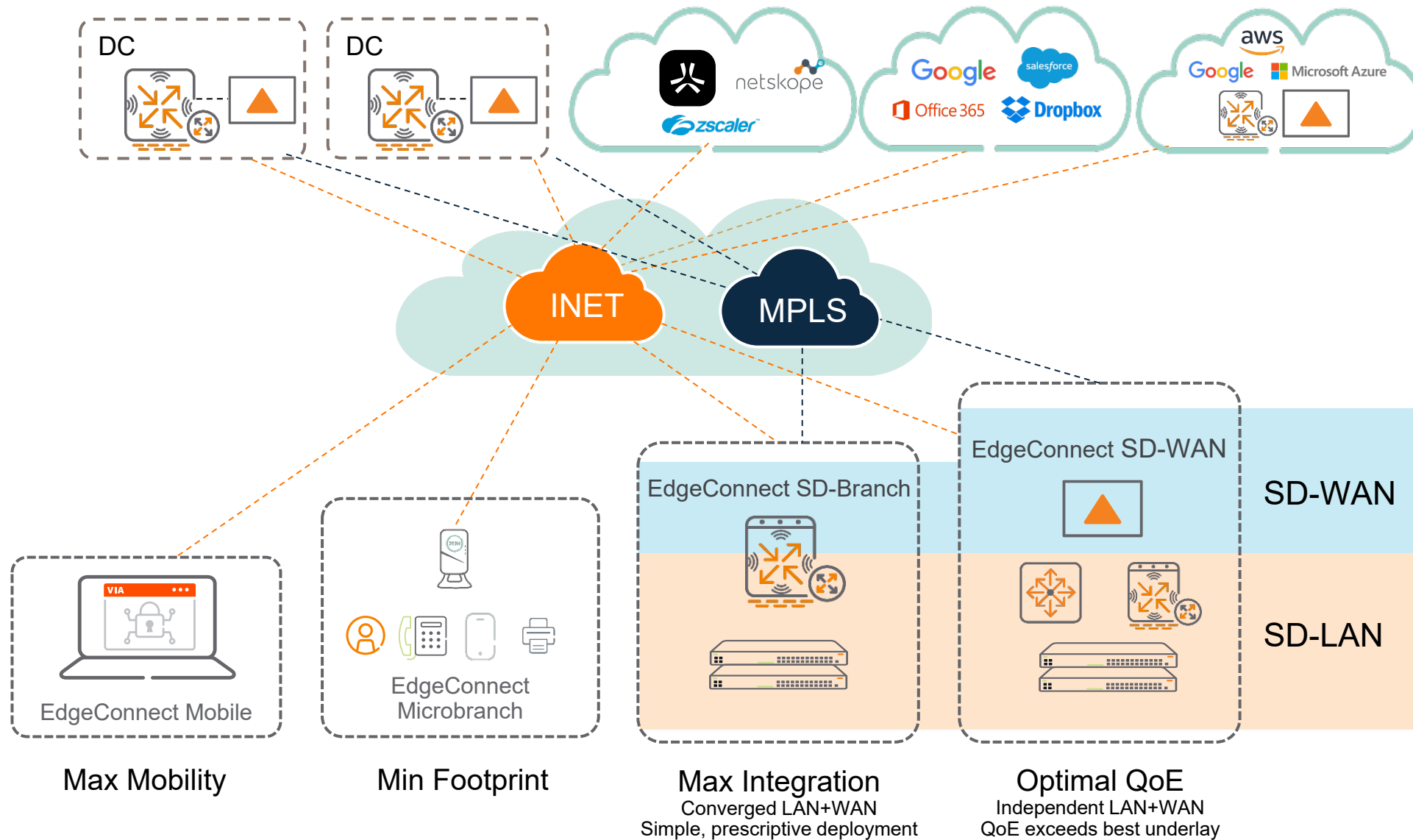
Performance

- Sub second session failover
- 10 x faster applications
- Performance Improvement for SaaS/IaaS
- Add / remove branches instantly
- Uptime during blackouts

Security

- Segment your apps
- Automated policies
- UTM features
- ZBF within VRFs
- Cloud Security Integration

HPE Aruba's secure edge portfolio



Integration opportunities

Converged management

Aruba Central
w/ EdgeConnect site view

Silver Peak Orchestrator
w/Aruba WAN view

Cross portfolio security

Clear Pass: Role based policy

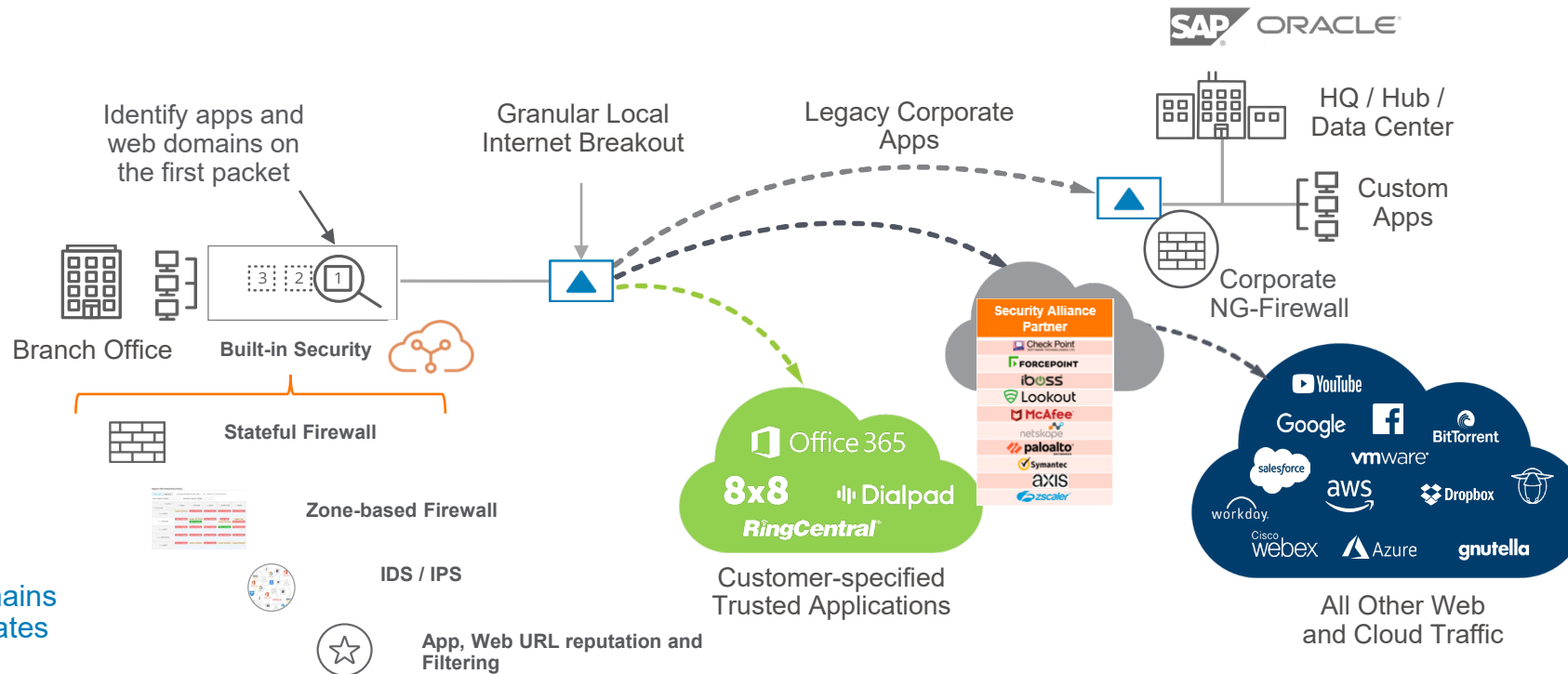
Dynamic segmentation

Unified threat management

Cloud security partners

Secure, adaptive internet breakout

– First-packet iQ™ enables application visibility and control



10,000+ Apps
300 Million+ Web Domains
Automated Daily Updates

Steer Apps Intelligently

Granular, intelligent breakout of SaaS and trusted internet-bound traffic directly from the branch

Improve App Response Time

Avoid added latency through direct access to where the app resides

Reduce Backhaul

Backhaul only untrusted traffic to corporate FW

Save Valuable WAN Bandwidth

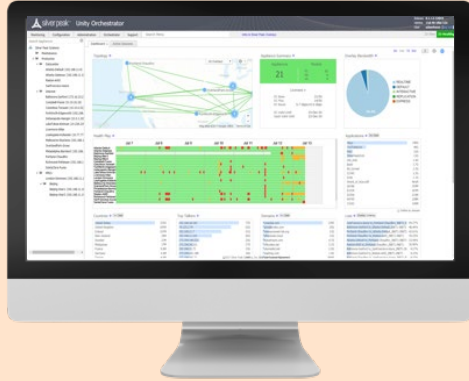
Avoid consumption of expensive MPLS circuits where not necessary

EdgeConnect Orchestrator

Your SD-WAN control center



What is EdgeConnect Orchestrator?



EdgeConnect Orchestrator

Orchestrate application policies across thousands of appliances, through a single pane of glass, driven by simple business intent policies.

Align **application policies** (QoS, security) with **business intent**






Secure, centralized visibility, control and administration of SD-WAN across thousands of sites

Extensive analytics, application & network performance measurements, & troubleshooting.

Automates & simplifies lifecycle management of SD-WAN

Orchestrates **end-to-end service chains** through partner APIs.

Business Intent Based Overlays

<div> Dashboard Zscaler Internet Access Business Intent Overlays × </div>									
<div> Business Intent Overlays ? Apply Overlays Regions Hubs View Overlay Stats Interface Labels </div>									
Priority	Overlay	Region	SD-WAN Traffic to Internal Subnets				Breakout Traffic to Internet & Cloud Services		
			Topology	Hubs +	Primary Interfaces	Backup Interfaces	QoS & Security +	Policy Order	Primary Interfaces
1	GUEST	Global	Regional Hub & Spoke		High Quality Waterfall: Overall Quality			1 Zscaler Cloud	INETA
=	Match Traffic	Regions ▶						2 Break out	INETB
×	GUEST								INETC
									Waterfall: Fixed Order
2	REALTIME	Global	Regional Hub & Spoke		1 TRANSIT1 2 INETA 2 INETB 2 INETC 6 INETA v6 6 INETB v6	2 LTEA 2 LTEB 2 SAT1 If Pri & Sec Down		Branch CENTRAL1-Azure	INETA
=	Match Traffic	Regions ▶						1 Backhaul	INETB
×	REALTIME				High Availability Waterfall: Overall Quality			2 Break out	INETC
									Waterfall: MOS
3	BATCH	Global	Regional Hub & Spoke		2 INETA 2 INETB 2 INETC	2 LTEA 2 LTEB 2 SAT1 If Pri & Sec Down		Branch CENTRAL1-Azure	INETA
=	Match Traffic	Regions ▶			High Quality Waterfall: Overall Quality			1 Prisma	INETB
×	BESTEFFORT							2 Backhaul	INETC
								3 Break out	Balanced
4	RECREATIONAL	Global	Regional Hub & Spoke		2 INETA 2 INETB 2 INETC	2 LTEA 2 LTEB 2 SAT1 If Pri & Sec Down		Branch CENTRAL1-Azure	INETA
=	Match Traffic	Regions ▶			High Quality Waterfall: Overall Quality			1 Break out	INETB
×	RECREATIONAL							2 Backhaul	INETC
									Waterfall: Auto
5	BUSINESS	Global	Regional Hub & Spoke		1 TRANSIT1 2 INETA 2 INETB 2 INETC 6 INETA v6 6 INETB v6	2 LTEA 2 LTEB 2 SAT1 If Pri & Sec Down		Branch CENTRAL1-Azure	INETA
=	Match Traffic	Regions ▶			High Quality Waterfall: Overall Quality			1 Break out	INETB
×	BUSINESS							2 Backhaul	INETC
								3 Zscaler Cloud	Waterfall: Auto

Search tags, appliances

Show Tags

Dashboard x Business Intent Overlays Access Lists Flows Topology

84 Appliances

- 6 -- HUB -- 13
- 1 -- APJ & AUS -- 4
- 4 -- EMEA -- 9
 - Hamburg-Pady
 - Ripponden-Collier
 - Edinburgh-Moir 2
 - Edinburgh1-Moir
 - Edinburgh2-Moir
 - Pamplin 3
 - Dublin-Pamplin
 - Sussex2-Pamplin
 - WRH-TEST-Pamplin2
 - Reading-Cook 2
 - Reading1-Cook
 - Reading2-Cook
- 1 -- US CENTRAL -- 20
- 1 -- US EAST -- 25
- 1 -- US WEST -- 12
- 4 MAINTENANCE 1
 - silverpeak 123706
- OFFLINE 0

Appliance Licenses >

Appliances	Models	
84	EC-XS	28
	EC-V	42
	EC-US	14

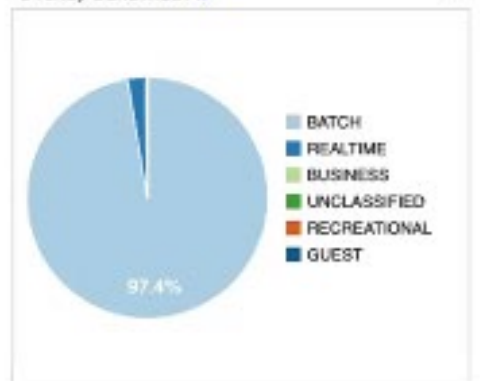
EC Licenses			
Base	39/50	1 Gbps	3/100
Plus	13/50	2 Gbps	3/100
50 Mbps	7/100	Unlimited	5/110
200 Mbps	17/100	Boost	56.1% of 10.0 Gbps
500 Mbps	10/100		

Valid Until	
EC	01-Aug-23 08:00
EC Boost	01-Aug-23 08:00

Topology >



Overlay Bandwidth >



Top Talkers >

10.100.0.199 Default	41G
192.168.14.24 Default	41G
10.41.71.253 Default	3.4G
192.168.11.85 Default	2.5G
10.50.21.245 Default	1.4G
192.168.11.167 Default	1.2G
192.168.11.120 Default	1.1G
14.73.173.170 Default	1.1G
40.97.120.66 Default	951M
192.168.17.7 Default	937M
192.168.23.102 Powers	937M
89.164.9.116 Default	929M
52.96.91.66 Default	814M
54.153.79.12 Default	769M
192.168.23.106 Powers	715M

Domains >

ffivestuple.net	51G
fdropcam.com	5.8G
figooglevideo.com	3.0G
ffoffice365.com	2.2G
falv-cdn.net	929M
fsilverpeak.cloud	559M
fgvtl.com	355M
fscalethree.net	345M
fskmalhd.net	269M
fmicrosoft.com	237M
fyding.com	164M
fnai.com	152M
fwindows.net	86M
fcloudfront.net	65M
dns.google	60M

Applications >

Doku_amb	41G
Nest_AwareVideo	5.8G
Youtube	3.6G
Office365Exchange	2.2G
Synlog	1.4G
Https	1.3G
Rtp	941M
Temp	938M
Netflow	872M
ldp:11131	856M
PingPlotter-icmp	525M
SilverPeakOrch	423M
Akamaihd	269M
Http	239M
others	2.0G

Countries >

United States	16G
United Kingdom	235M
Singapore	84M
Japan	42M
Germany	21M
Hong Kong	16M
Australia	12M
Netherlands	11M
Canada	6.5M
Denmark	2.2M
France	1.4M
Belgium	1.2M
Ireland	436K
Taiwan Province of China	63K
India	48K

Health Map >



Ports >

443 TCP (Microsoft-Exchange)	41G
61609 TCP	24G
61649 TCP	17G
443 TCP (Https)	11G
0 ICMP	4.4G
443 UDP (Https)	2.8G
514 UDP (Syslog)	2.8G
11131 UDP	1.6G
61660 TCP	1.1G
554 TCP (Rtp)	941M
51905 TCP	937M
2055 UDP (Netflow)	783M
49143 TCP	719M

Security policy matrix

Security Policies ?

Matrix View Table View ☐ Merge ☒ Replace

To Zones ⇄ ↓ From Zones	To Default	To POS	To WAN	To Guest_Wifi	To InternetBreakout	To Business_Overlay
From Default	Allow All	Allow: Everything Deny: Everything	Allow: Everything Deny: Everything	Allow: Everything	Allow: Everything Deny: Everything	Allow: Everything
From POS	Deny All	Allow All	Allow: Everything	Allow: ACL Printer Deny: Everything	Deny All	Allow: Everything
From WAN	Deny All	Deny: Vnc Allow: Everything	Allow All	Allow: Everything	Deny All	Deny All
From Guest_Wifi	Deny All	Deny All	Allow: Everything	Allow All	Deny: Social_Network Deny: Games 1 more rule ...	Deny All
From InternetBreakout	Deny All	Deny All	Deny All	Deny All	Allow All	Deny All
From Business_Overlay	Deny All	Allow: ACL_BusinessCritical Deny: Vnc	Deny All	Deny All	Deny All	Allow All

Edit Rules: Guest_Wifi to InternetBreakout

Add Rule

4 Rows

Search

Priority ▲	Match Criteria	Action	Enabled	Tag	Comment	
1001	Application group Social_Network	deny	<input checked="" type="checkbox"/>			×
1002	Application group Games	deny	<input checked="" type="checkbox"/>			×
1004	ACL Internet_Traffic	allow	<input checked="" type="checkbox"/>			×
65535	Match Everything	deny	<input checked="" type="checkbox"/>			×

EdgeConnect SD-WAN IDS Highlights

- Built-in signature-based intrusion detection
- Utilizes common Aruba UTM framework
 - Automated threat feeds (from Aruba Central)
 - Threat logging to centralized collector/SIEM
 - Threat logging to Central (future)
- Integrated with zone-based firewall enabling application-level selection for inspection
 - Allow, Deny, Allow & Inspect
 - e.g., “inspect all flows on Internet link”
- Add-on “Advanced Security” license

Intrusion Detection System

IDS Configuration | Enable IDS on Appliances

Edit	Appliance	Status	Config File	Signatures	Schedule
	bkutty3-ecvb	Enabled	user_config.yaml	https://rules.emergingthreats.net/open/suricata-4.0/emerging.rules.zip	Every day at 8:59 starting 14-Dec-20 8:57 PST
	bkutty3-ecva	Enabled	user_config.yaml	https://rules.emergingthreats.net/open/suricata-4.0/emerging.rules.zip	Every day at 8:59 starting 14-Dec-20 8:57 PST
	bkutty3-ecvc	Enabled	user_config.yaml	https://rules.emergingthreats.net/open/suricata-4.0/emerging.rules.zip	Every day at 8:59 starting 14-Dec-20 8:57 PST

Segment (VRF) Firewall Zones Policies

Matrix View | Table View | Log 'Deny All' Events at Level: Alert | Applies to all Zones/Segments

Source Segment: Default | Destination Segment: Default

To Zones	To Default	To TRUSTED	To GUEST	To UNTRUSTED	To MGMT
From Default	Inspect: Everything	Deny: Everything	Deny: Everything	Deny: Everything	Deny: Everything
From TRUSTED	Deny: Everything	Inspect: ACL Finance Allow: Everything	Deny: Everything	Deny: Adult Inspect: Everything	Inspect: icmp Deny: Everything
From GUEST	Deny: Everything	Deny: Everything	Deny: Everything	Allow: Everything	Deny: Everything
From UNTRUSTED	Deny: Everything	Deny: Everything	Deny: Everything	Deny: Everything	Deny: Everything
From MGMT	Deny: Everything	Inspect: Everything	Deny: Everything	Inspect: Everything	Inspect: Everything

Save | Cancel

Summary: Benefits of SD-WAN

- Complete control and visibility of WAN infrastructure
- Route application traffic, not packets, based on:
 - Business importance
 - Security requirements
- Built in Firewall, end-to-end segmentation and IPS/IDS security
- Automated integration with Cloud infrastructures and Secure Service Edge providers

Best-of-breed SASE architecture

Secure SD-WAN

- SaaS Acceleration
- WAN Optimization
- Tunnel Bonding
- Zero-Touch Provisioning
- Data Encryption
- Next-generation Firewall
- Granular Segmentation
- IDS/IPS and DDoS Protection



Security Service Edge (SSE)

- Zero Trust Network Access
- Cloud Access Security Broker
- Secure Web Gateway
- Firewall as a Service
- Remote Browser Isolation
- Data Loss Prevention
- Sandboxing

The background is a vibrant, abstract composition. It features large, overlapping organic shapes in a bright red and a deep magenta/purple. These shapes are layered, creating a sense of depth. Within these colored areas, there are various patterns: some have fine horizontal lines, others have a dense dot pattern, and some are solid. The overall effect is modern and energetic.

Demo



Thank you.