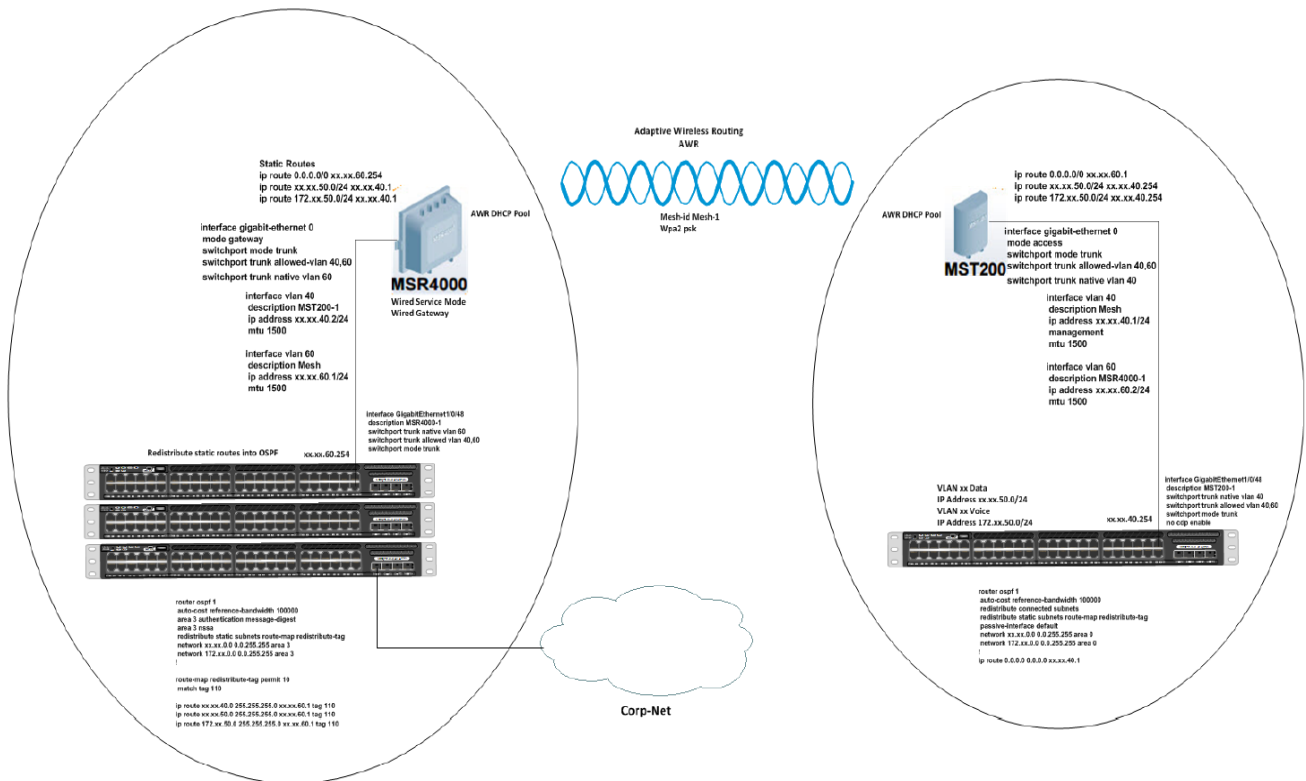


Setting up a Mesh network using a MSR4000 to MST200 step by step

Set-up:



MSR4000 =====(Mesh Backhaul)=====MST200

Connected to Switch 1

Connected to Switch 2

- In the above setup we have an MSR4000 physically connected to a Cisco 3650 switch stack on VLAN 60 and across the wireless mesh we have an MST200 connected to a separate Cisco 3650 switch on VLAN 40. We need to make each physical Gig 0 ports on the Aruba device trunking ports.
- Create VLAN's 40 and 60 on each MSR and MST Mesh router and allow them on the trunk ports.
- Create VLAN's 40 and 60 on each Cisco 3650 switch and trunk the ports allowing VLAN's 40 and 60 to the MSR and MST respectively.
- Create a VLAN 60 interface with an IP address on the Cisco 3650 switch for the MSR4000
- Assign an IP address on the MSR4000 for VLAN 60
- Create a VLAN 40 interface with an IP address on the Cisco 3650 switch for the MST200
- Assign an IP address on the MST200 for VLAN 40
- Create a native VLAN 60 on the MSR4000 Gig 0 interface
- Create a native VLAN 40 on the MST200 Gig 0 interface
- We need to make sure that we have L3 interface for VLAN 40 on the MST 200. We can have L2 interface for VLAN 60 on MST 200. On MSR 4000 we need to add L3 interface for all the VLANs.

Please find below a reference configuration for the interface on MSR:

MSR4000

```
interface gigabit-ethernet 0
no access-category
no description
no dhcp
no ip access-group
no link
no management
mode gateway
no mtu
no qos-policy
no router-id
no shutdown
switchport trunk allowed-vlan 1,40,60
no switchport site-id
switchport trunk native vlan 60
```

```
interface vlan 40
no description
no dhcp
no ip access-group
ip address xx.xx.40.2/24
no isolation
no management
mtu 1500
no qos-policy
no router-id
no shutdown
quit
```

```
interface vlan 60
no description
no dhcp
no ip access-group
ip address xx.xx.60.1/24
no isolation
management
mtu 1500
no qos-policy
no router-id
no shutdown
quit
```

Static routes

```
ip route 0.0.0.0/0 xx.xx.60.254 <next hop as VLAN interface IP on Cisco switch>
```

```
ip route xx.xx.50.0/24 xx.xx.40.1 <next hop as VLAN interface IP on MST 200>  
ip route xx.xx.254.4/32 xx.xx.40.1 <next hop as VLAN interface IP on MST 200>  
ip route xx.27.50.0/24 xx.xx.40.1 <next hop as VLAN interface IP on MST 200>
```

MST200

```
interface gigabit-ethernet 0  
  no access-category  
  no description  
  no dhcp  
  no ip access-group  
  no link  
  no management  
  mode access  
  no mtu  
  no qos-policy  
  no router-id  
  no shutdown  
  switchport trunk allowed-vlan 1,40,60  
  no switchport site-id  
  switchport trunk native vlan 40  
quit
```

```
interface vlan 40  
  no description  
  no dhcp  
  no ip access-group  
  ip address xx.xx.40.1/24  
  no isolation  
  management  
  mtu 1500  
  no qos-policy  
  no router-id  
  no shutdown  
quit
```

```
interface vlan 60  
  no description  
  no dhcp  
  no ip access-group  
  ip address xx.xx.60.2/24  
  no isolation  
  no management  
  mtu 1500  
  no qos-policy  
  no router-id  
  no shutdown  
quit
```

Static Routes:

ip route 0.0.0.0/0 xx.xx.60.1 <next hop as VLAN interface IP on MSR4000>

ip route xx.xx.50.0/24 xx.xx.40.254 <next hop as VLAN interface IP on Cisco switch>

ip route xx.xx.254.4/32 xx.xx.40.254 <next hop as VLAN interface IP on Cisco switch>

ip route 172.xx.50.0/24 xx.xx.40.254 <next hop as VLAN interface IP on Cisco switch>