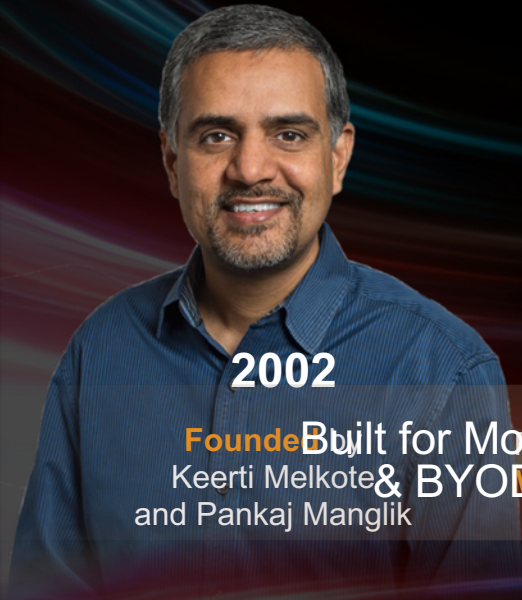


# We Redefine Your Digital Experience



# EDGE ARCHITECTURE

PROVEN OVER 16 YEARS



2002

**Founders**  
Keerti Melkote  
and Pankaj Manglik  
**Built for Mobility  
& BYOD**

2006

MOBILE EDGE

Recognized as  
**Market Leader  
in WLAN**

2007

Extended to  
**Multi-Vendor  
Networks**  
Aruba Networks IPO,  
Acquired Avenda  
& AirWave wireless

2013

Extended to  
**Wired Access  
& Core**  
Recognized as  
**Market Leader  
in NAC**

2015

Extended to  
**WAN/Cloud**  
Aruba and  
HPE WAN/Cloud  
Aruba Becomes  
Networking Division  
of HPE

2016

Extended to  
**Edge DC**  
Recognized as  
**Market Leader  
in LAN/WLAN**

CLOUD-CONNECTED EDGE

Today

Extended to  
**IoT**  
Keerti Melkote  
is Aruba  
as Founder  
**President**

ONE ARCHITECTURE. BUILT TO LAST.



# EXPERIENCE THE **EDGE**



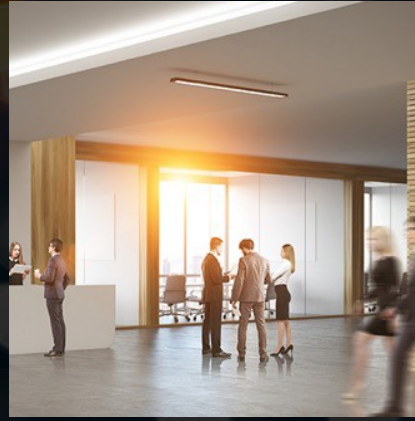
**SMART DIGITAL  
WORKPLACE**



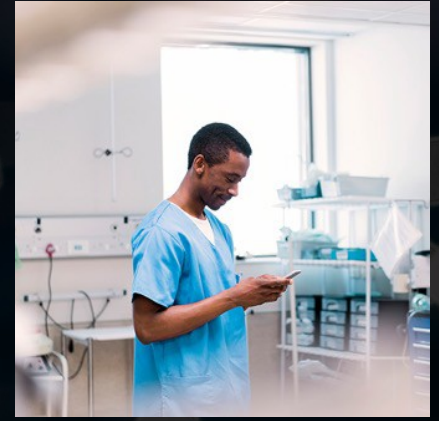
**SMART DIGITAL  
SCHOOL**



**SMART DIGITAL  
STORE**



**SMART DIGITAL  
HOTEL**



**SMART DIGITAL  
HOSPITAL**



# BUILDING THE PLATFORM FOR THE INTELLIGENT EDGE



END USER



LINE OF  
BUSINESS



IT



CISO

EDGE  
SOFTWARE

## EDGE SOFTWARE PLATFORM

EDGE  
INFRASTRUCTURE

WIRELESS  
ACCESS

WIRED  
ACCESS

CORE  
SWITCHING

WAN

EDGE  
DATACENTER

IOT  
INFRA



# CAMPUS ACCESS

## SMART INNOVATIONS FOR WI-FI6



**802.11ax  
510 Series  
Access Points**

WPA3 &  
Wi-Fi Enhanced Open



**802.11ad/ac  
387 Access Points**

60GHz Point-to-Point



**802.11ax-Read  
2930M Switches**

802.3bt



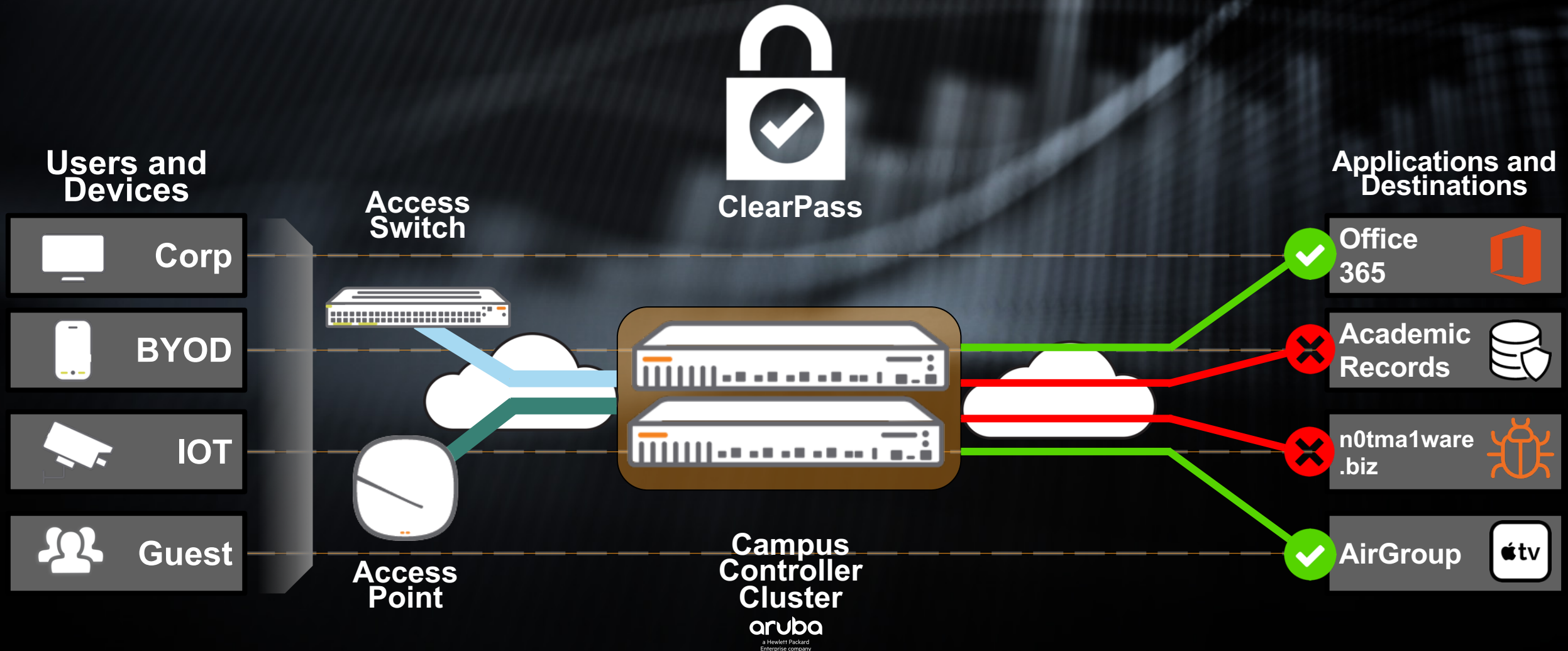
**NetInsight  
AI-powered Automation &  
Assurance**

Green AP



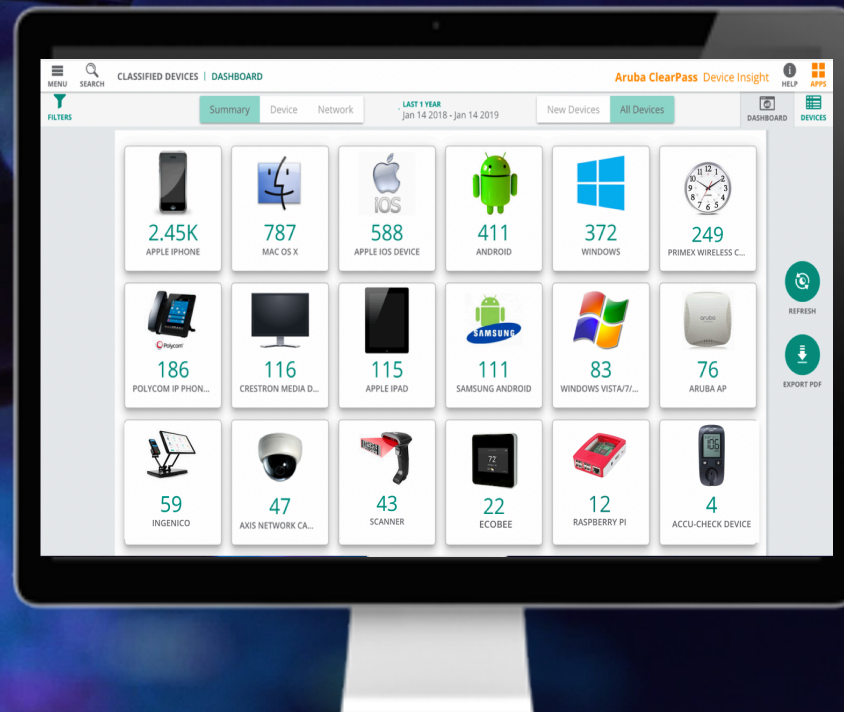
# CAMPUS ACCESS

## ROBUST POLICY WITH DYNAMIC SEGMENTATION





# CLEARPASS DEVICE INSIGHT OVERVIEW



## ELIMINATES BLIND SPOTS



# CAMPUS ACCESS

## AI-OPS WITH NETINSIGHT



### PROACTIVE

Switch unable to fully power the APs

### PRESCRIPTIVE

Recommended Intelligent Power Management changes

### RESULT

Doubled throughput

### PROACTIVE

Detected too many clients at 2.4Ghz

### PRESCRIPTIVE

Recommended optimized transmit power

### RESULT

More clients on 5G reduced trouble tickets



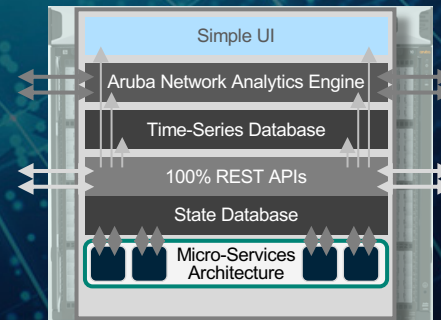
# CORE SWITCHING

## INNOVATIVE PORTFOLIO

### HARDWARE



### SOFTWARE

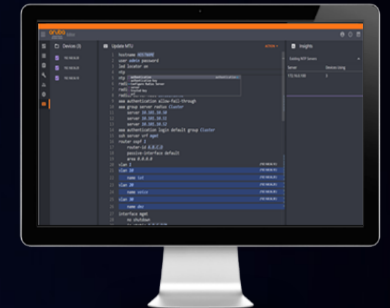


AOS-CX

### ANALYTICS & AUTOMATION



Network  
Analytics  
Engine



NetEdit



# CORE SWITCHING

## NETWORK ANALYTICS ENGINE

Relevant historical data correlated with configuration changes

Automated service impact and root cause analysis

Intelligent monitoring agents 'always on'



Complete telemetry for all system information

Can capture info from neighbor infrastructure

Notification with automatic diagnostics



# CORE SWITCHING

## NAE CUSTOMER USE CASES

### IT Workflow Integrations



ITSM integrated change mgmt. with ServiceNow / TopDesk



Proactive Email notifications for critical events and errors



Auto-config archiving with TFTP config updates

...

### Network Health Reporting



Transceiver Diagnostics for Health and Failure Root Cause



VSX Health Monitor to Highlight VSX Stability



Monitor and Change Route when Failure Detected

...

### Proactive Monitoring



Predictive Fault Finder for General Network Health



VoIP monitor based on IPSLA transactions



MAC and ARP Count Analytics to Ensure Proper Device Load

...

## CUSTOMER USE CASE CO-DEVELOPMENT

Deep R&D engagements with 25+ customers to date, delivering customer focused solutions

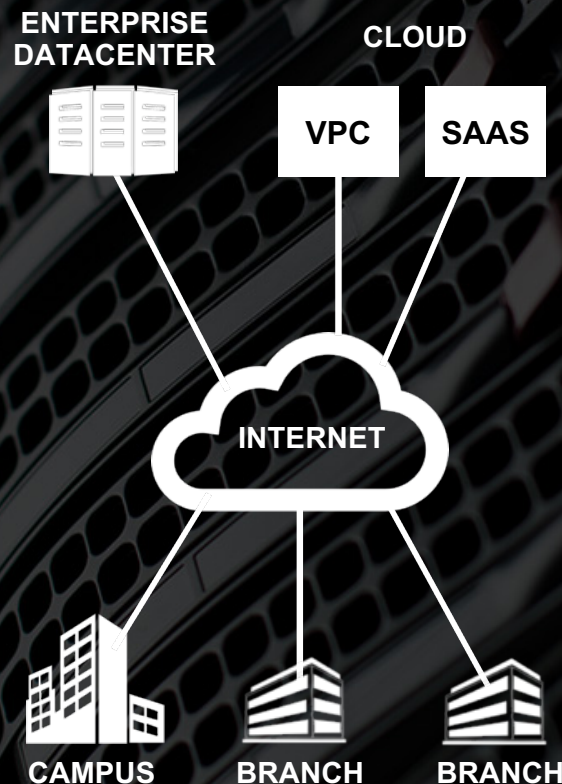
NAE Scripts Published on Aruba Solutions Exchange (ASE)

# THE DATA CENTER EVOLUTION

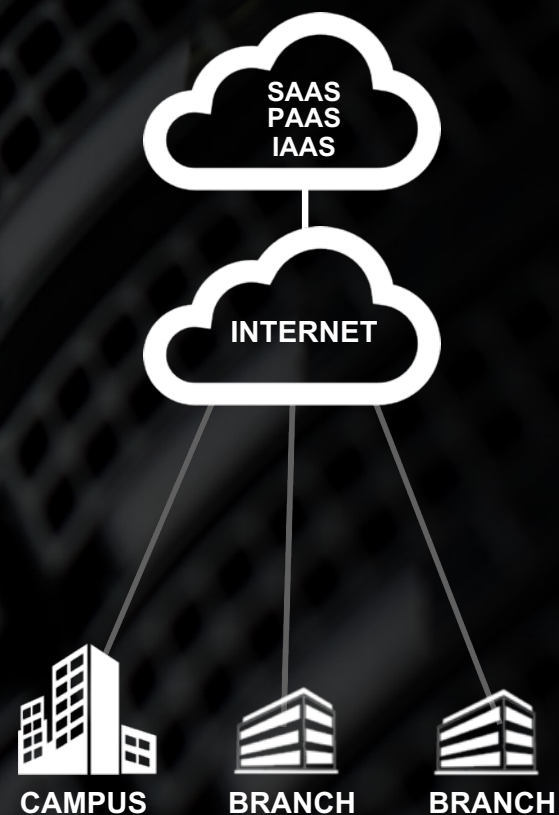
## PAST



## PRESENT



## FUTURE





# EDGE DATACENTER

## FIVE KEY IMPERATIVES



Gartner, The Edge Completes the Cloud, September 2018

# EDGE DATACENTER

## EXAMPLE USE CASES FOR THE EDGE

### Privacy / Security



#### VIDEO SURVEILLANCE

Privacy, Bandwidth



#### INVENTORY TRACKING

Privacy, Autonomy



#### RECORD KEEPING

Privacy, Bandwidth, Autonomy

### Performance / Availability



#### HOSPITALITY

Entertainment experience



#### RETAIL

Point of Sale – cross referenced with inventory



#### HEALTHCARE

Critical Medical devices connected to network



# EDGE DATACENTER

## NETEDIT FOR AUTOMATION AND VERIFICATION

Search

Edit

Validate

Deploy

Audit

### Anomaly Detection

Discover inconsistencies in the network configuration

### Predictive Assistance

Analyze what you do, anticipate your needs, help complete tasks

### Auto-Change Verification

Minimizing change windows and reduce errors

### Continuous Validation

Continuously monitor for deviations from intended policy or design

### Repetitive Task Automation

Single operation to complete tasks across multiple systems



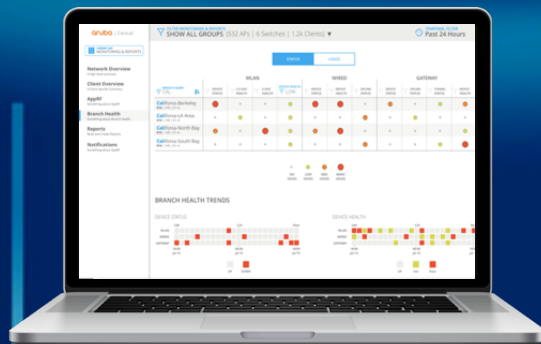
# CONNECTING THE EDGE TO THE CLOUD

Market Leading Branch Mobility Solution + Branch Gateway + Cloud-Based SD-WAN Management  
**Integrated SD-WAN, Security, LAN, and WLAN Managed Centrally**

Aruba Gateway



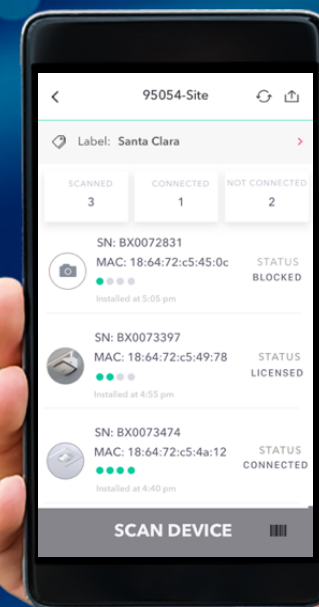
Aruba Central



Aruba ClearPass



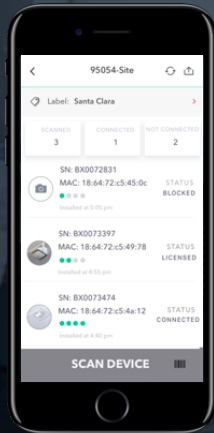
Mobile  
Installer  
App



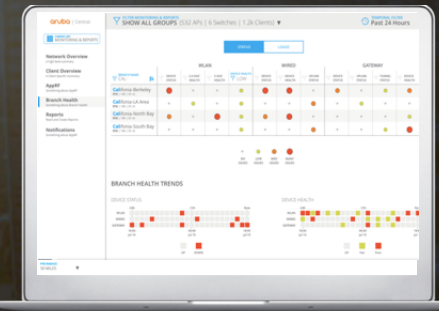


# ARUBA SOFTWARE-DEFINED BRANCH

Easy Mobile Provisioning

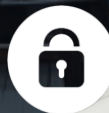


Cloud-Managed at Scale



Amazing User Experiences

**FROM SD-LAN**



Secure Access



Optimized Cloud Connectivity

**TO SD-WAN**



# EXPERIENCE DRIVEN BY THE INTELLIGENT EDGE



END  
USER



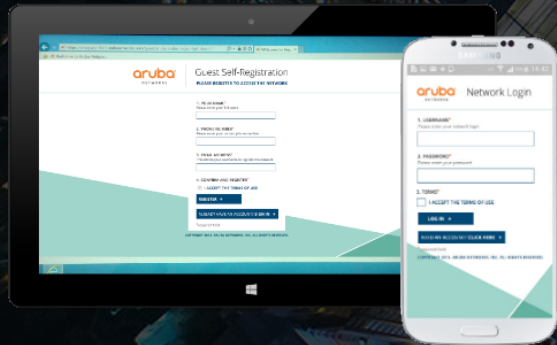
LINE OF  
BUSINESS



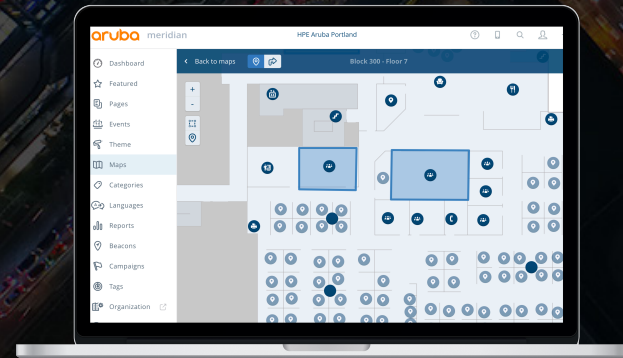
IT



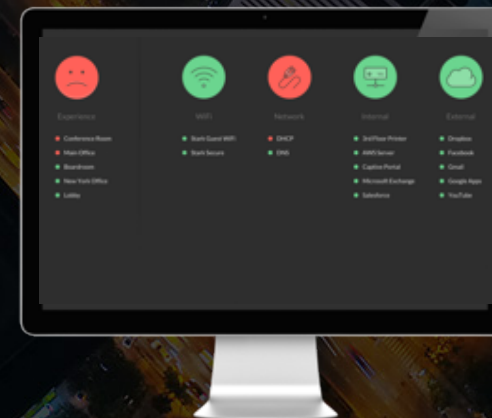
CISO



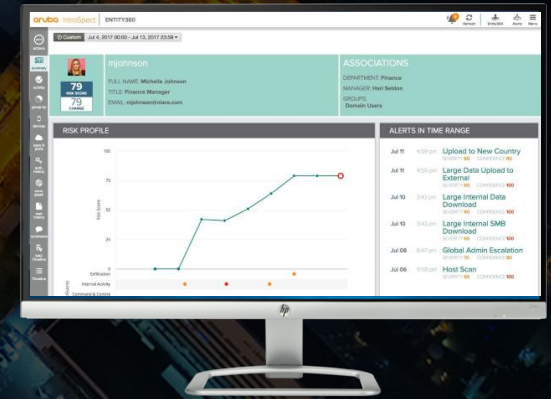
ClearPass Guest



Meridian



User Experience  
Insight

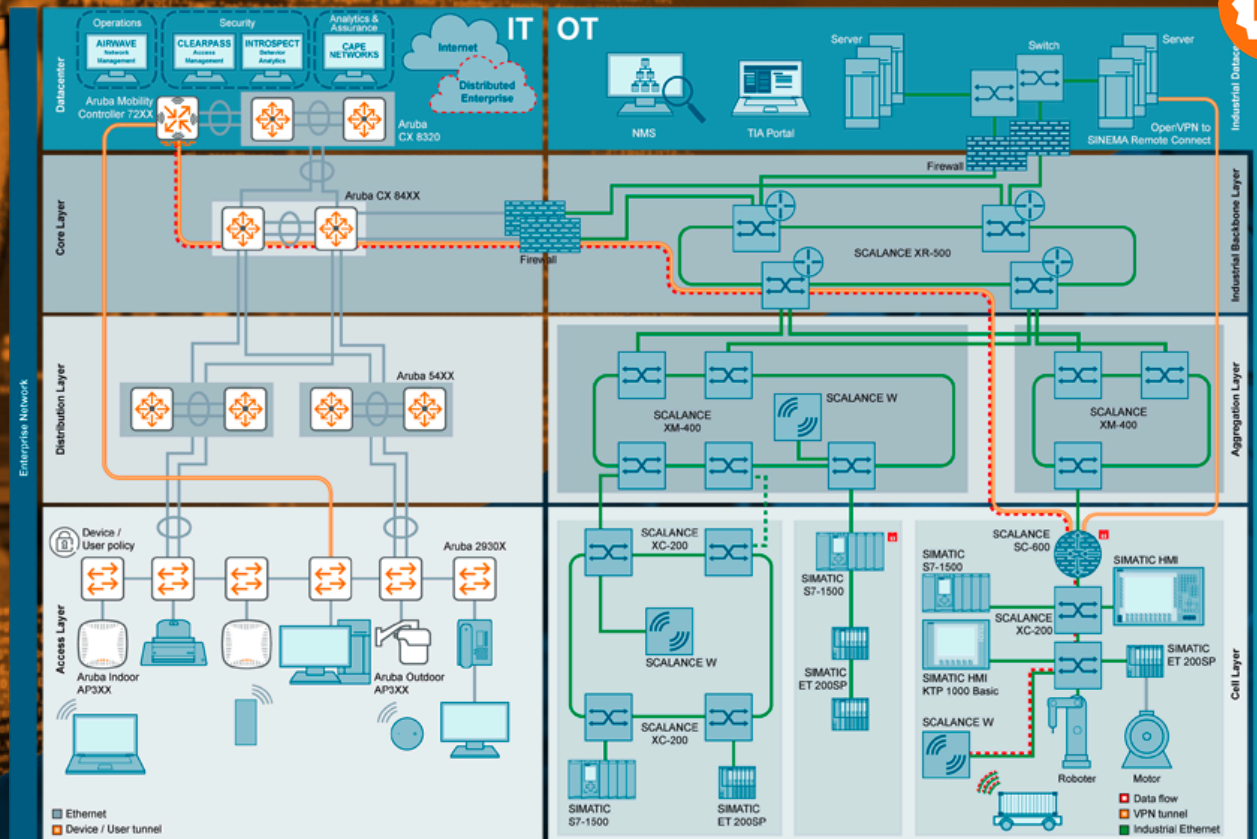


IntroSpect



# EXPERIENCE IT & OT

**aruba**  
a Hewlett Packard  
Enterprise company



**SIEMENS**  
*Ingenuity for life*

# AUTOMATE **EVERYTHING**



## **PROVISIONING**

Automation that drives network infrastructure configuration



## **POLICY**

Automation that drives device identification, segmentation, and applied actions



## **AI-OPS**

Automation driven from telemetry collection and ML

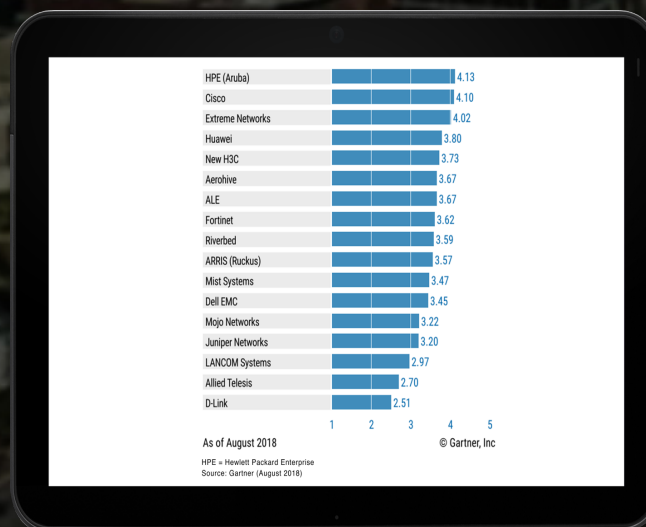


# MARKET VALIDATION

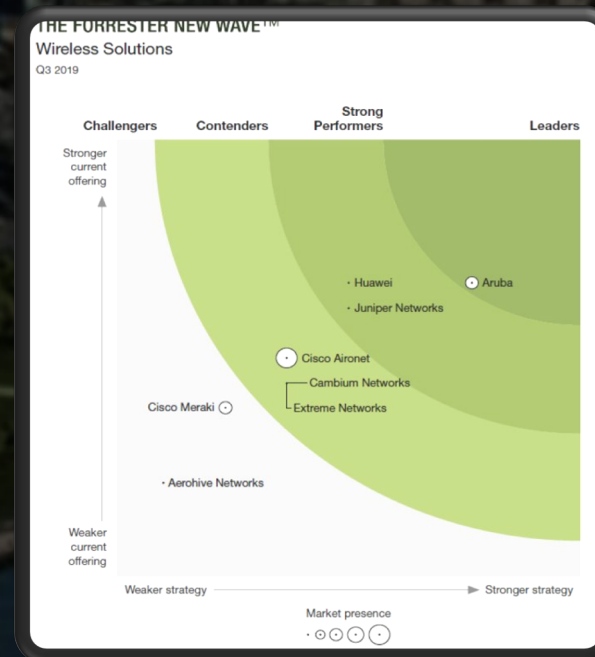
## Wired and Wireless LAN Access Gartner Magic Quadrant 2018



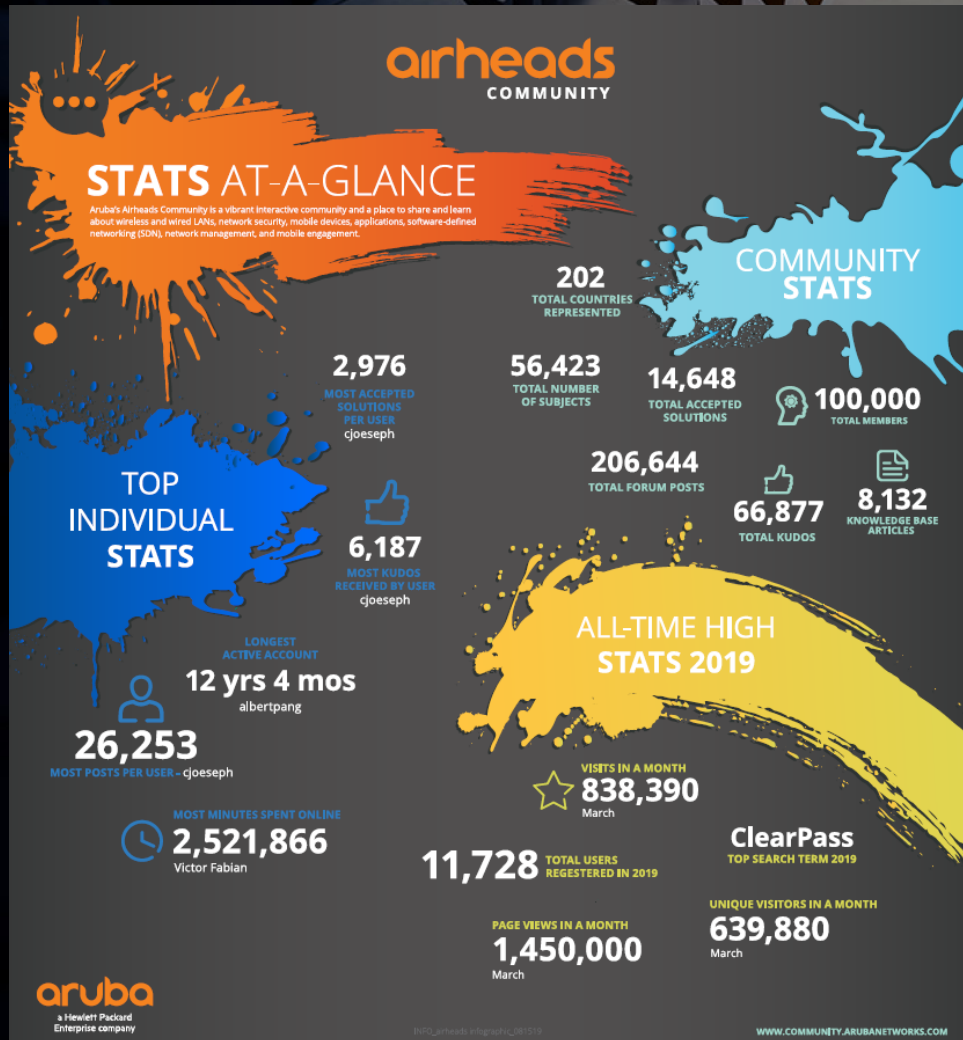
## Critical Capabilities Report Gartner 2018



## Wireless Solutions Q3 Forrester New Wave™ 2019



# JOIN AIRHEADS



<https://community.arubanetworks.com>





**CUSTOMER FIRST  
CUSTOMER LAST**

A background image showing two hands, one from the left and one from the right, with fingers spread and thumbs pointing towards each other, forming a heart shape. The image is dimmed and serves as a backdrop for the text.

# aruba

AMAZING EXPERIENCES  
WITH **AMAZING SIMPLICITY**