

atmosphere'23

BELGIUM

Introducing Central Next Generation

Tim Tijssens, Team Lead Systems Engineer

19 October 2023

ENTERPRISE CHALLENGES TODAY



WORK FROM ANYWHERE



AVAILABILITY



COLLABORATION

BUSINESS NEEDS

**NETWORK
OPERATIONS**



SECURITY

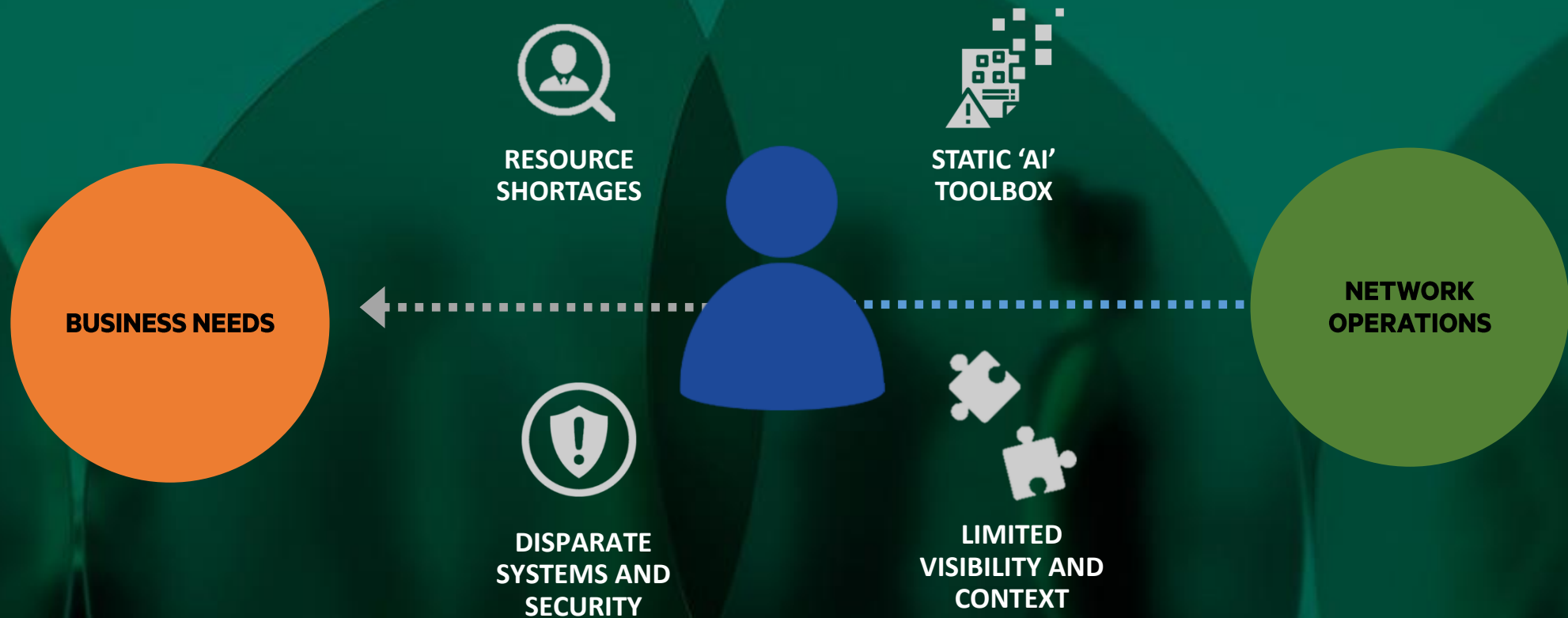


INCREASE IN USERS
AND DEVICES



SERVICE QUALITY AND
PERFORMANCE

ENTERPRISE CHALLENGES TODAY



ENTERPRISES NEED INTELLIGENT AND RESILIENT NETWORKS FOR TRANSFORMATIVE BUSINESS SUCCESS

EVOLUTION OF CENTRAL

A Decade of Customer-Driven Innovation

MOBILE FIRST ARCHITECTURE

2014

200+ devices
10K+ clients

- First cloud-based platform, primary lens for on-prem or cloud-managed devices
- Aruba acquires Rasa Networks and Niara

UNIFIED EDGE SERVICES

2020

300K+ devices
10M+ clients

- Single Platform ESP
- Cloud-native AI/ML platform

NEW CENTRAL with ADAPTIVE INTELLIGENCE

2023

2.5M+ devices
200M+ clients

- Design an experience that unlocks the value of data
- 'Future-ready' platform

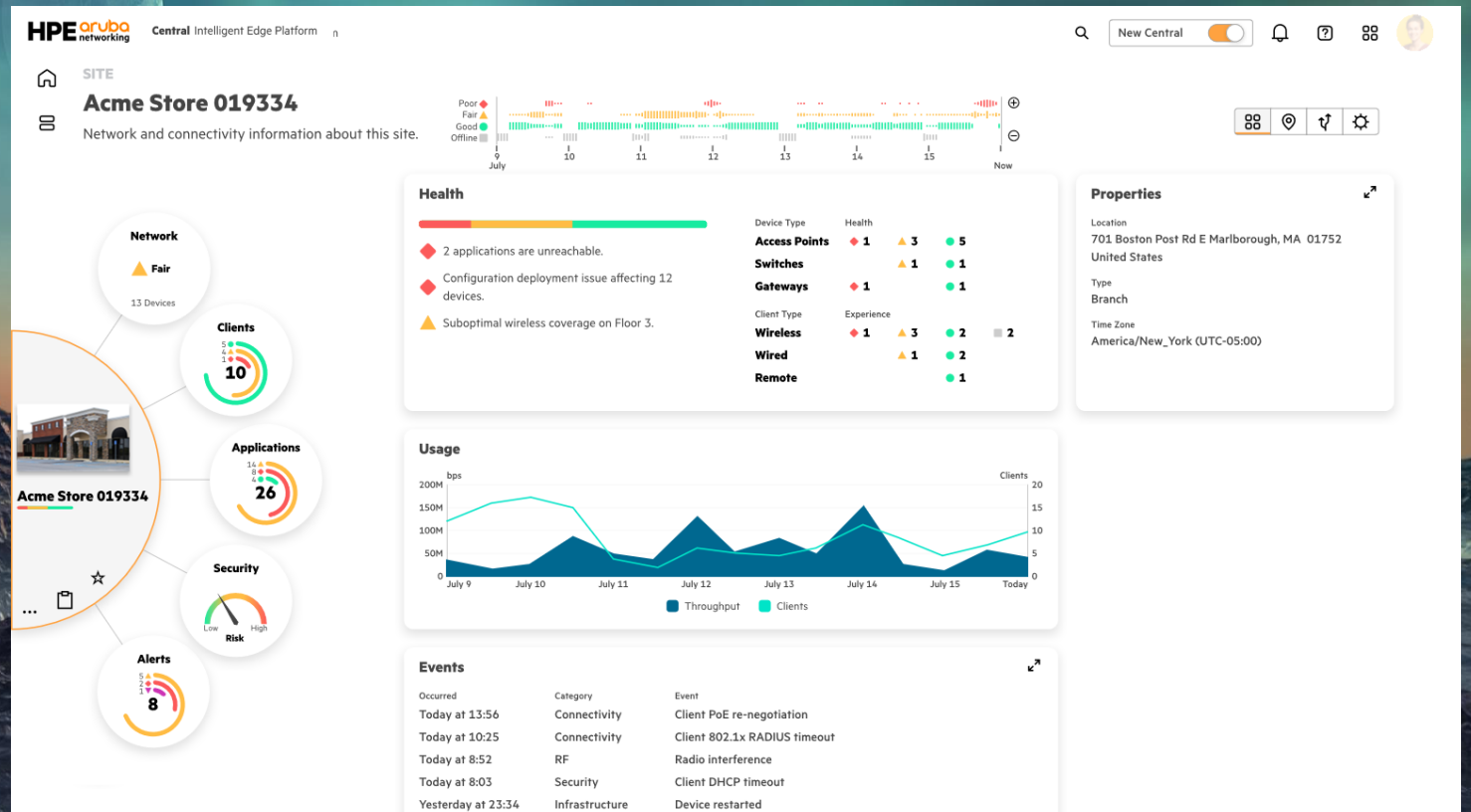
ARUBA CENTRAL
ORCHESTRATION
FOR IT EFFICIENCY

FROM
IS IT WORKING?



TO
OUTCOMES THAT
JUST WORK

INTRODUCING NEXT-GENERATION CENTRAL



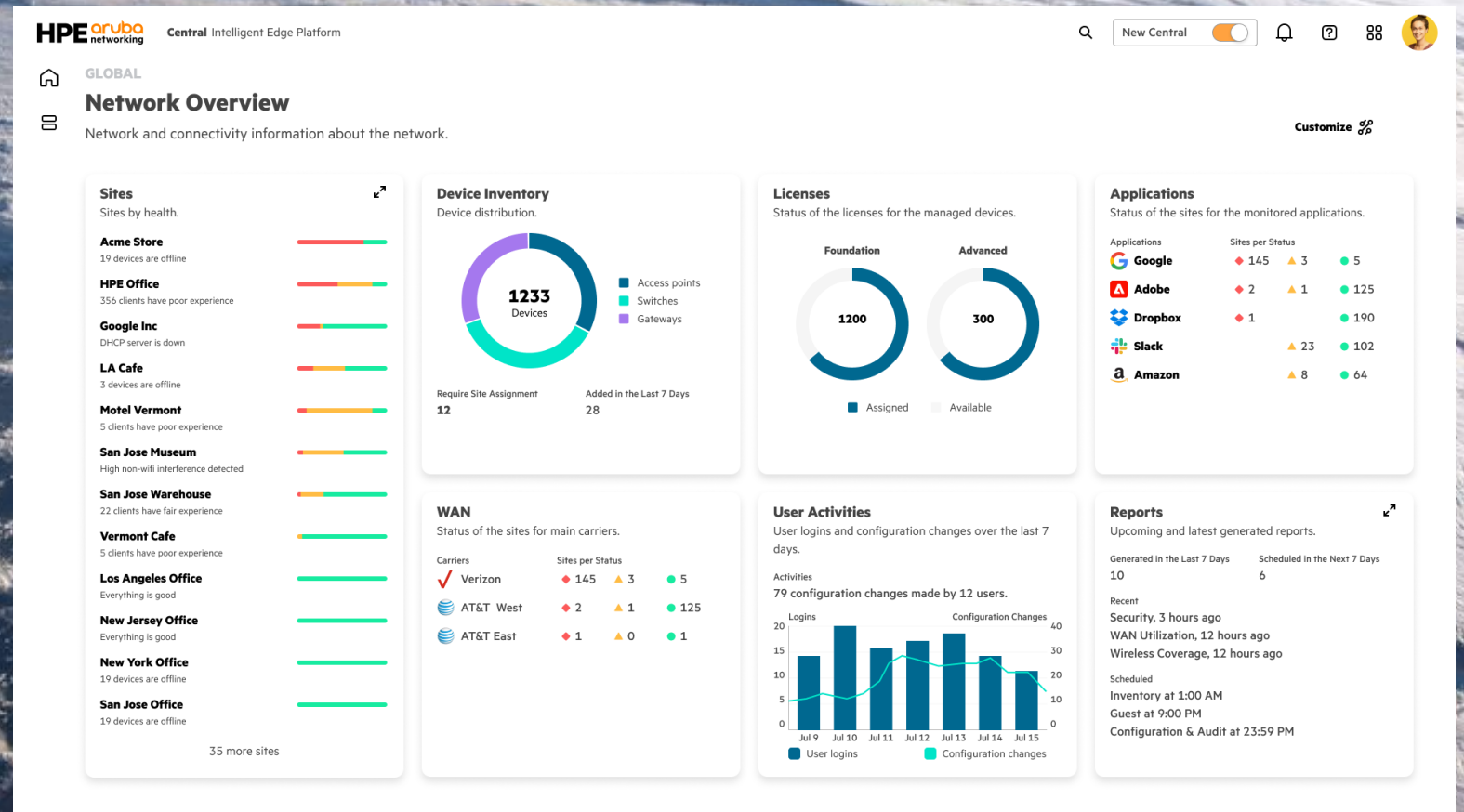
Intelligent Network Command Center


Directing Attention with a Powerful 'Cockpit' View

Unified network view for swift site health, application assessment and more

Intelligent indicators highlight immediate-attention issues

Optimized 'to-do' list for efficient network operation



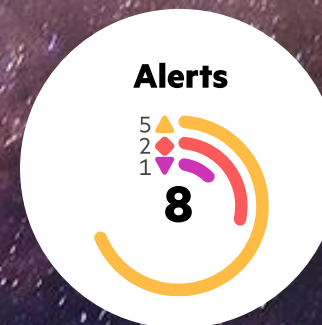
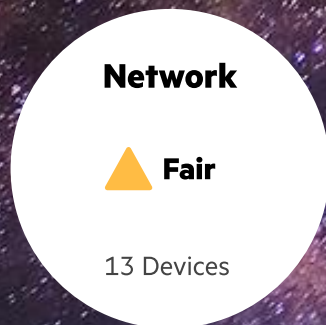


Acme Store 019334

...

☆

📄

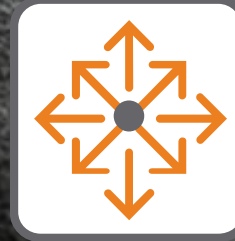


SOLAR SYSTEM

ELEMENT-ORIENTED VISIBILITY



Core 1



Core 2



Core 1



Core 2



Aggregation 1



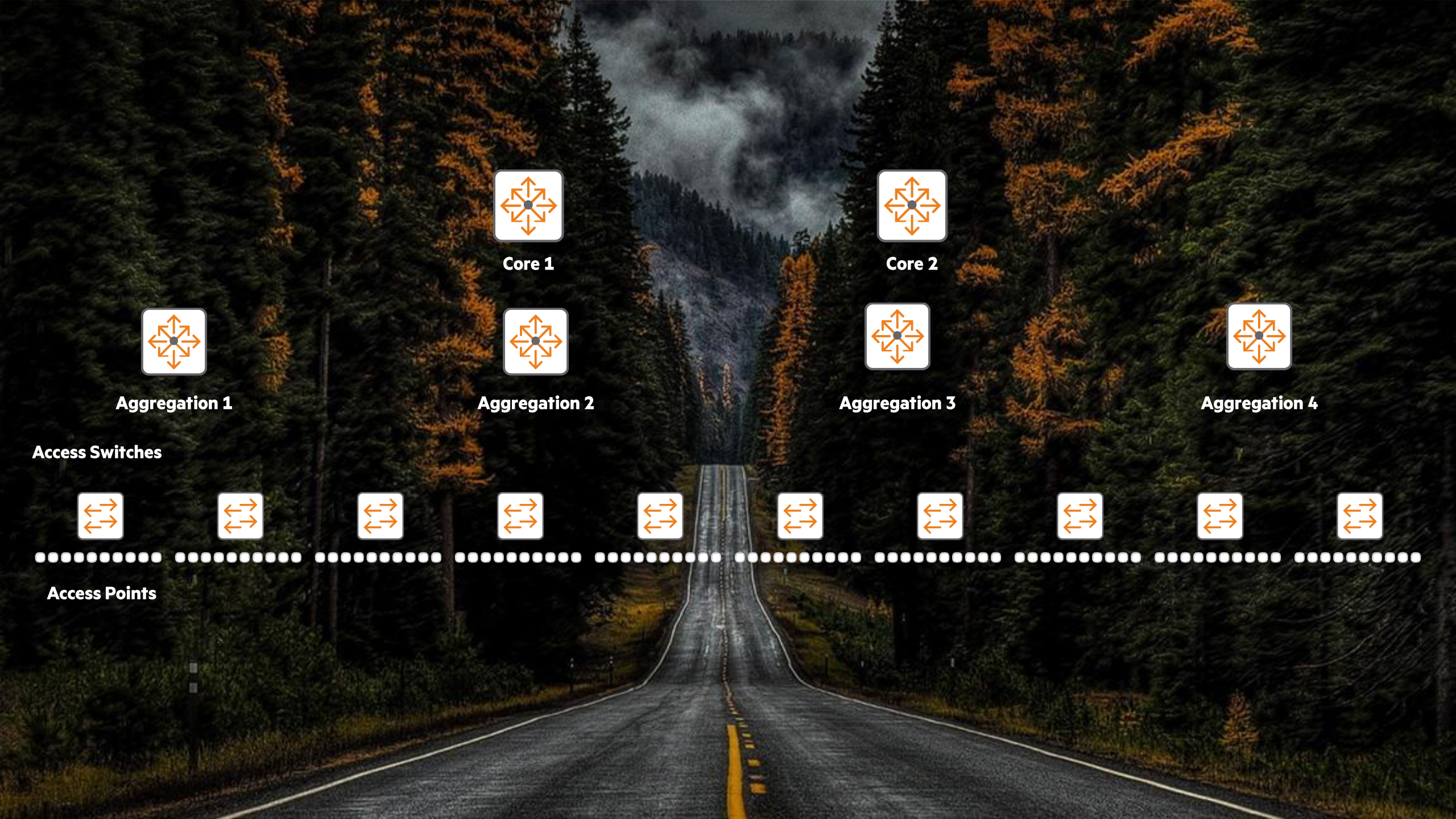
Aggregation 2



Aggregation 3



Aggregation 4



Core 1



Core 2



Aggregation 1



Aggregation 2



Aggregation 3



Aggregation 4

Access Switches



Access Points



Aggregation 1



Core 1



Aggregation 2



Core 2



Aggregation 3

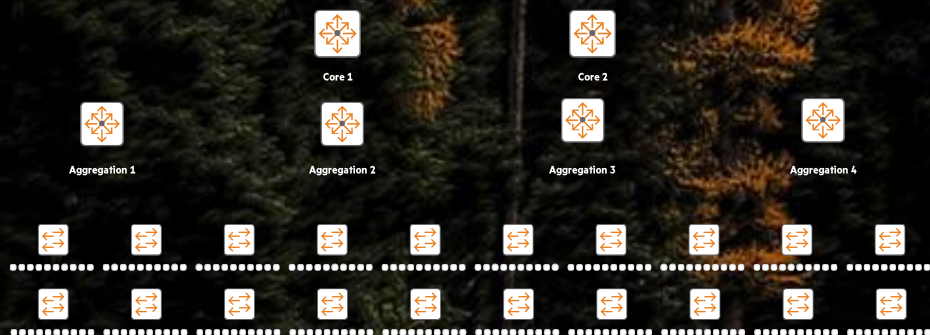


Aggregation 4

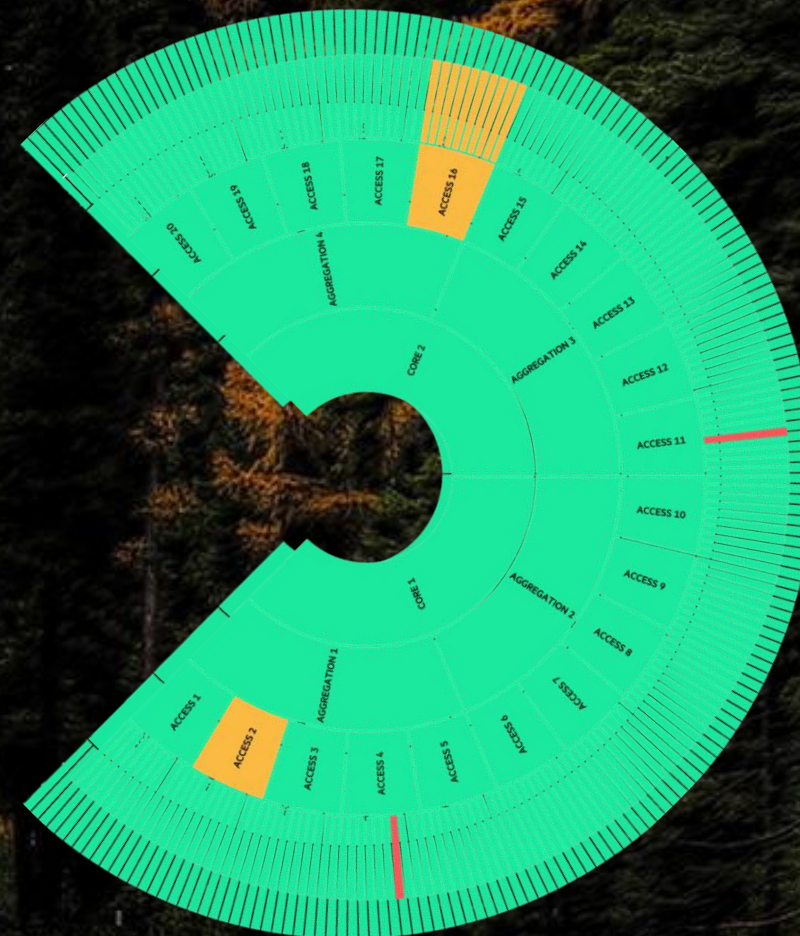


SUNBURST VIEW

A MODERN APPROACH WITH DEPTH



VS



PROGRESSIVE 'SUNBURST' TOPOLOGY VIEWS

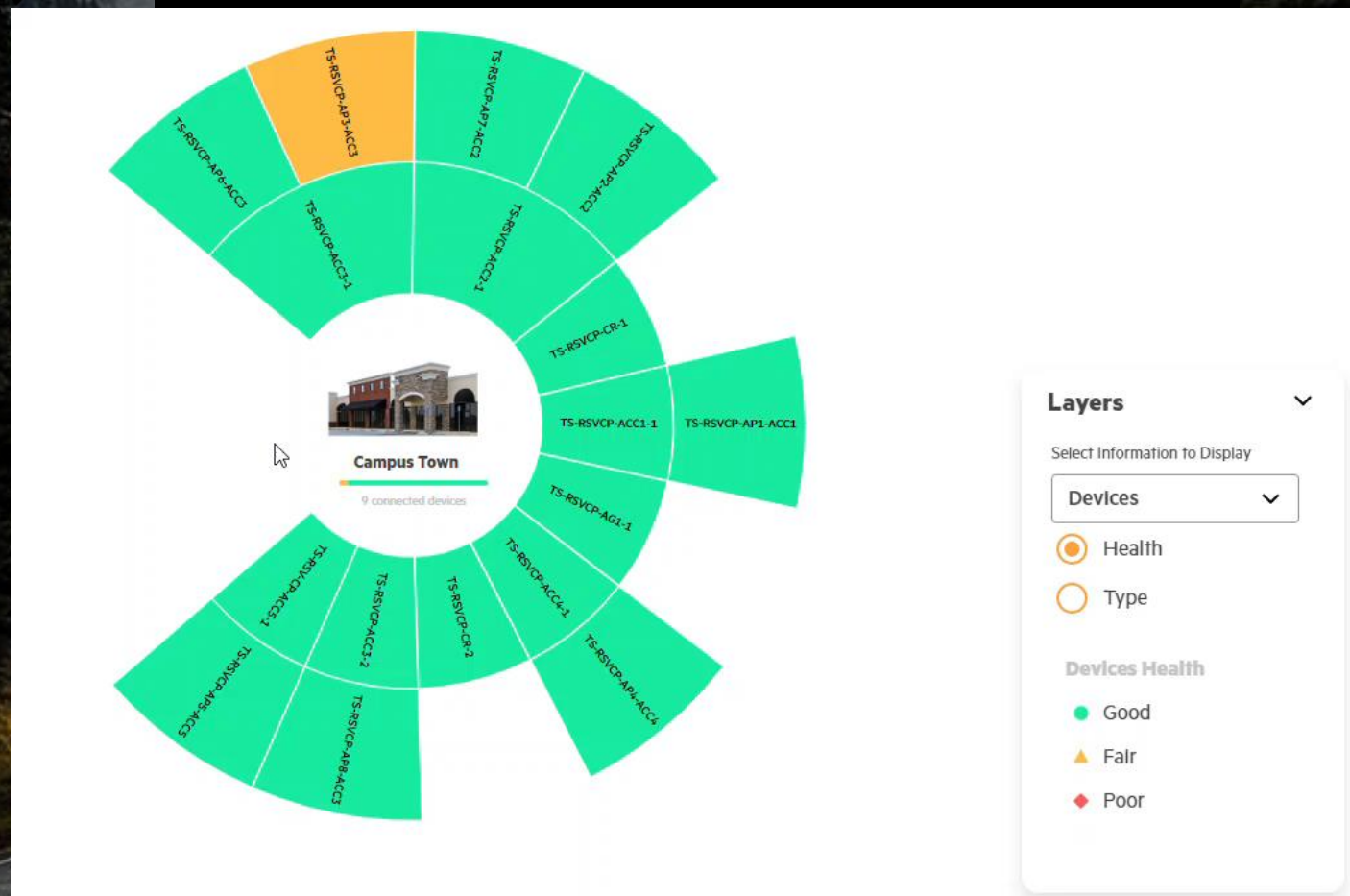
ENHANCE TROUBLESHOOTING AND ANALYSIS WITH A BIRD'S EYE VIEW

Intuitive
data views

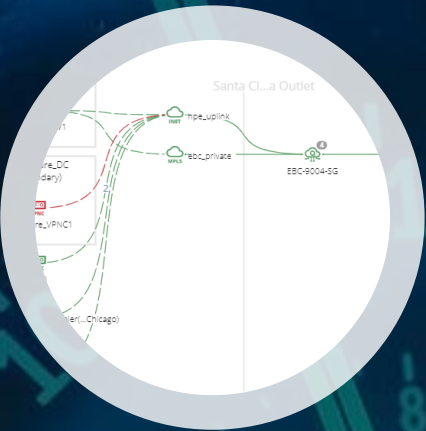
Intelligent visualization of physical
and logical network connectivity

Simplifies large network
visualization, overcoming node and
link overload

Robust filters and adjustable
reference points for enhanced
network exploration



- TROUBLESHOOTING HISTORICAL ISSUES
- MULTIPLE TOUCHPOINTS REQUIRED



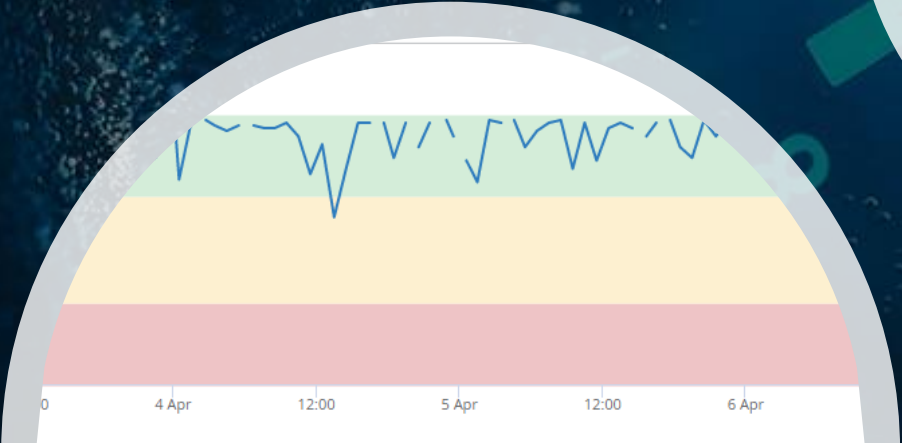
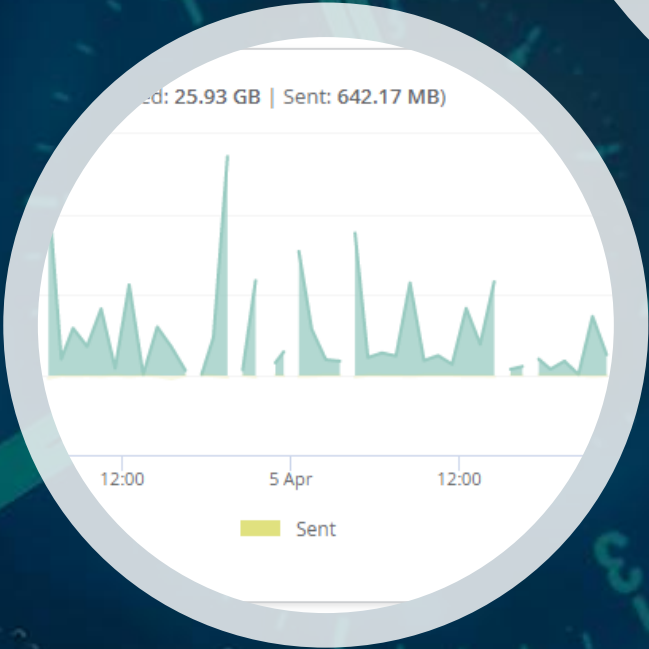
Search or ask Aruba

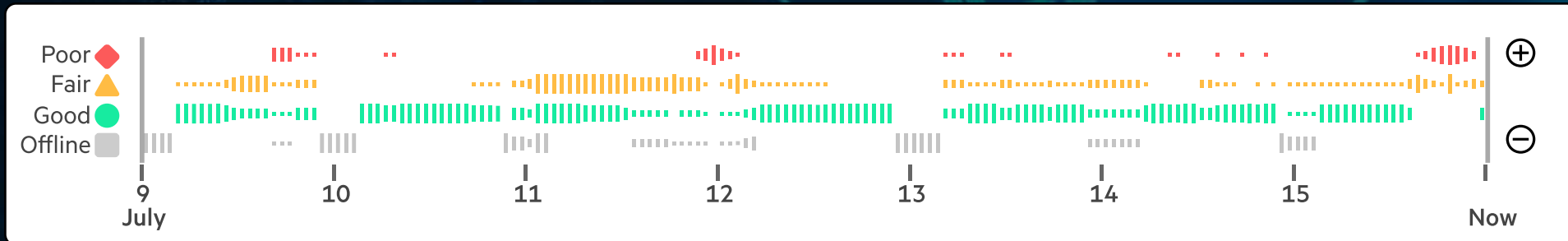
CLIENTS

AP

All 6 Connecting 0 Connected 4 Failed 1 Offline 1 Blocked 0 Wireless 6

Client Name	Status	IP Address	VLAN	AP Name
20:4c:03:4f:43:e3	Failed			EBC-14-WK
uxi01	Connected	10.200.22.37	22	EBC-14-WK
ebcsg-workshop	Connected	192.168.102.157	102	EBC-14-WK
uxi01	Connected	10.200.22.57	22	EBC-14-WK
EKTOP-KP2F0FK	Connected	192.168.102.195	102	EBC-14-WK
nt.k	Offline	10.200.22.119	22	EBC-14-WK

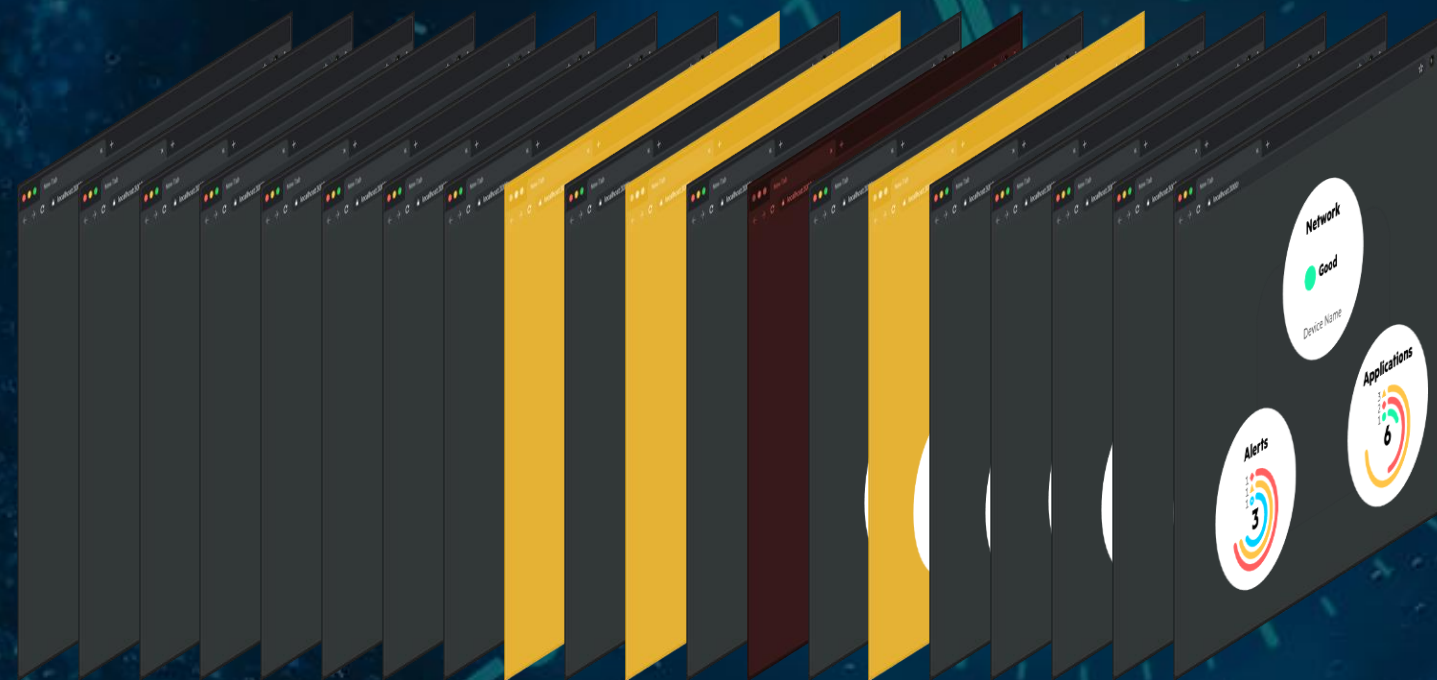
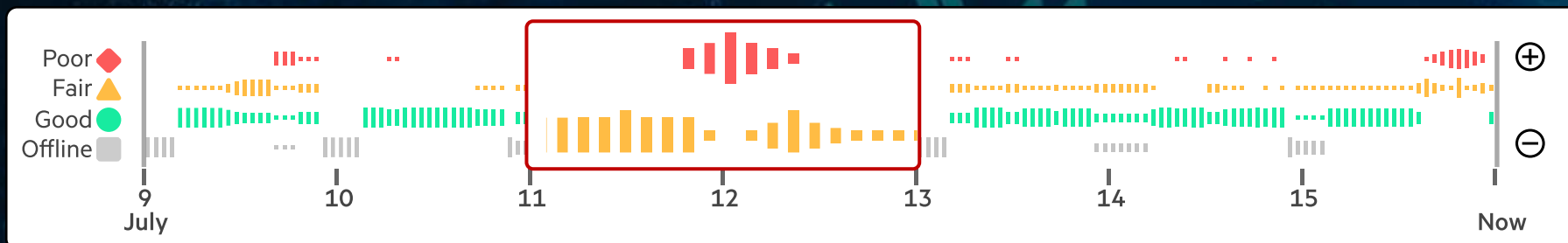


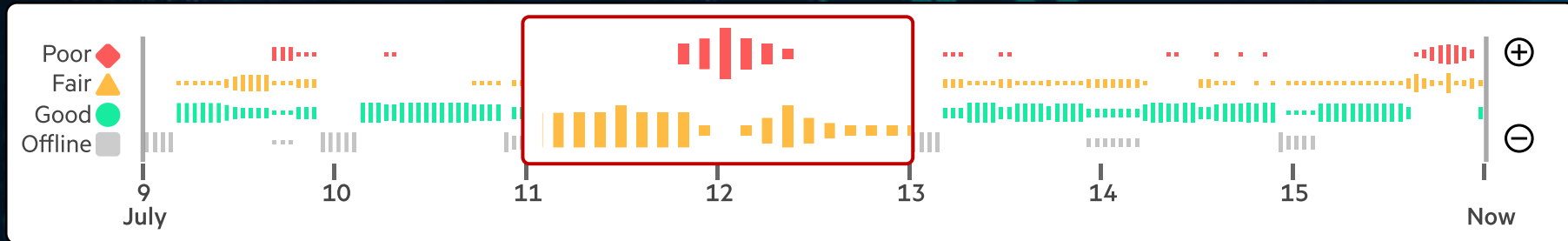


TIME TRAVEL ISSUE FORENSICS

HelpDesk







COMPLETE NETWORK SNAPSHOT

7 DAY PLAYBACK

1 MINUTE GRANULARITY

Problem Identified!



SITE

MIA

Network and connectivity information about this site.



ALERT



Client did not Receive an IP Address from DHCP Server

Client Failed to obtain an IP

Active Since

Today at 8:55 AM

Root Causes

- DHCP Server (10.21.36.165) was not reachable.

Recommendation

- Check DHCP Server Health
- Check If DHCP Server configuration is correct
- Check PCAP for deeper analysis

Impact

Clients

5

Devices

1 Access Point

Go to Alert

Alerts

Severity

Any (35)

Critical (20)

Major (4)

Minor (4)

Info (7)

Status

Any (35)

Active (35)

Cleared (0)

Search

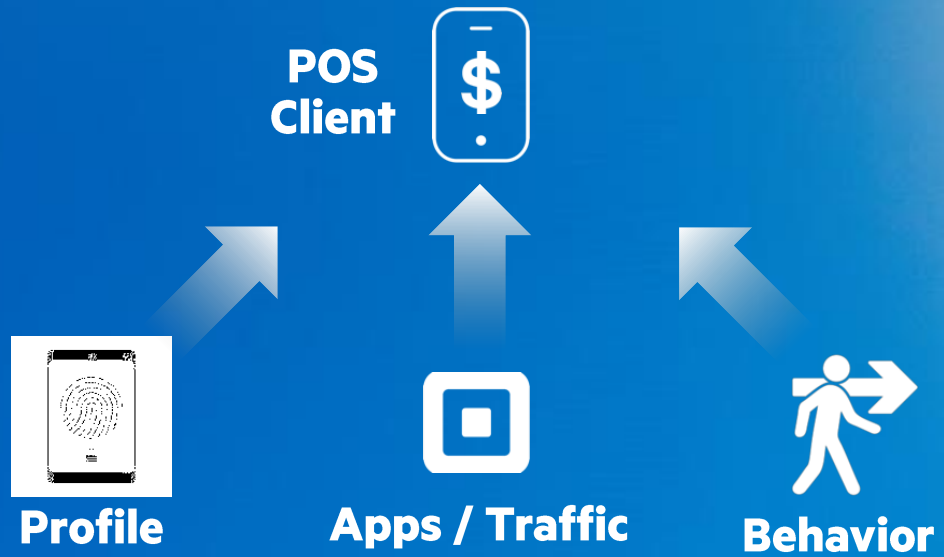


35 items

Description	Occurred On	Category	Status
AP Association Threshold Exceeded Info - The maximum number of WI-FL...	04/26/2023, 8:55:00 AM	ASSOCIATION	Active
Link MTU Mismatch Critical - The Max Transmission Unlt...	04/26/2023, 8:55:00 AM	SWITCH	Active
Client did not Receive an IP Address... Minor - Client Failed to obtain an IP	04/26/2023, 8:55:00 AM	DHCP	Active
URL Name Resolution Failed Major - DNS Server failed to lookup the...	04/26/2023, 8:55:00 AM	DNS	Active
Client(s) WPA Passphrase Is Incorrect Info - 4-Way Handshake Failed for WPA...	04/26/2023, 8:55:00 AM	AUTHENTICATION	Active
Client did not Receive an IP Address... Minor - Client Failed to obtain an IP	04/26/2023, 8:55:00 AM	DHCP	Active

Link set to Half Duplex

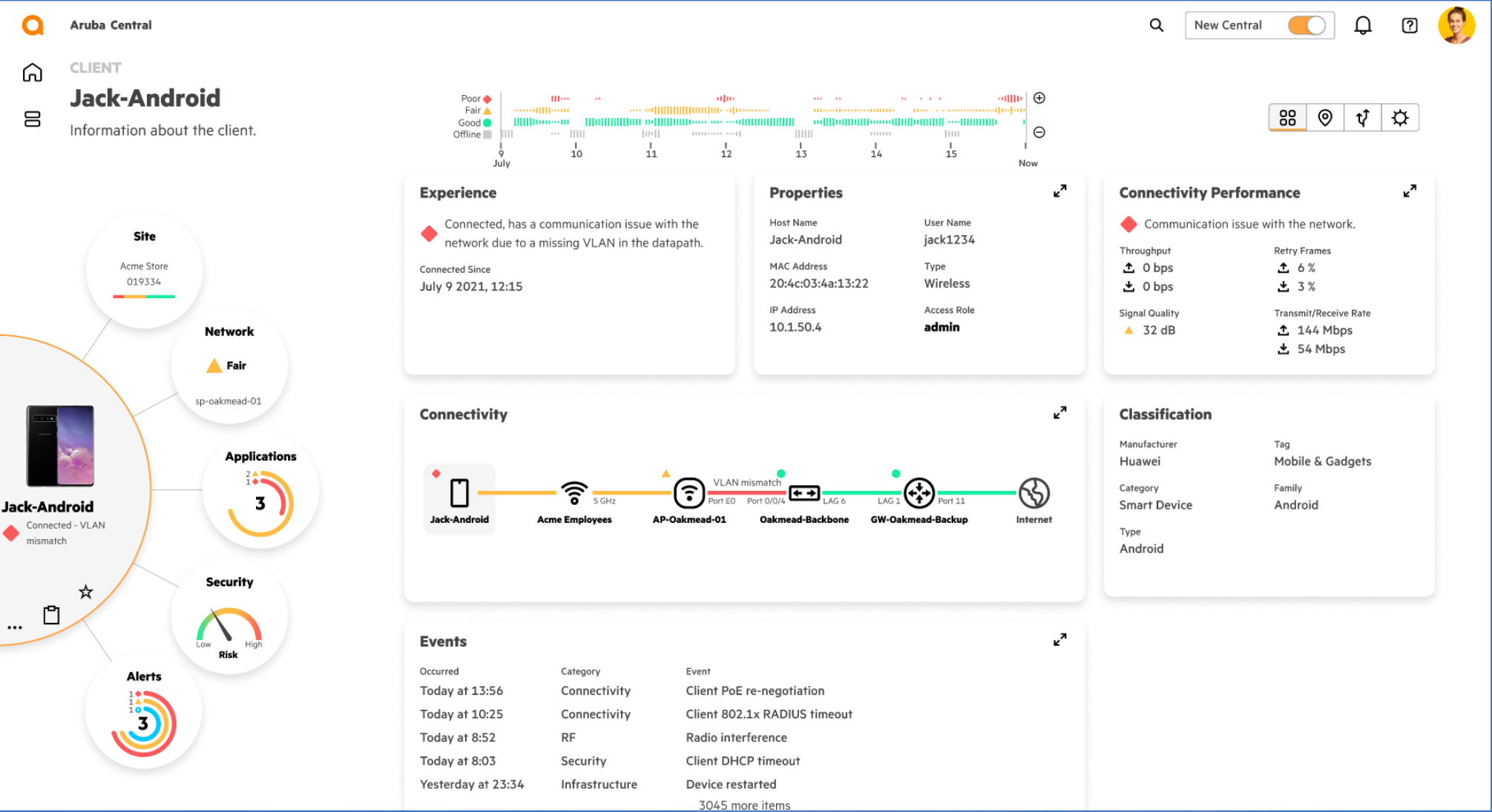
AI-POWERED CLIENT INSIGHTS VIA **BEHAVIOR ANALYSIS**



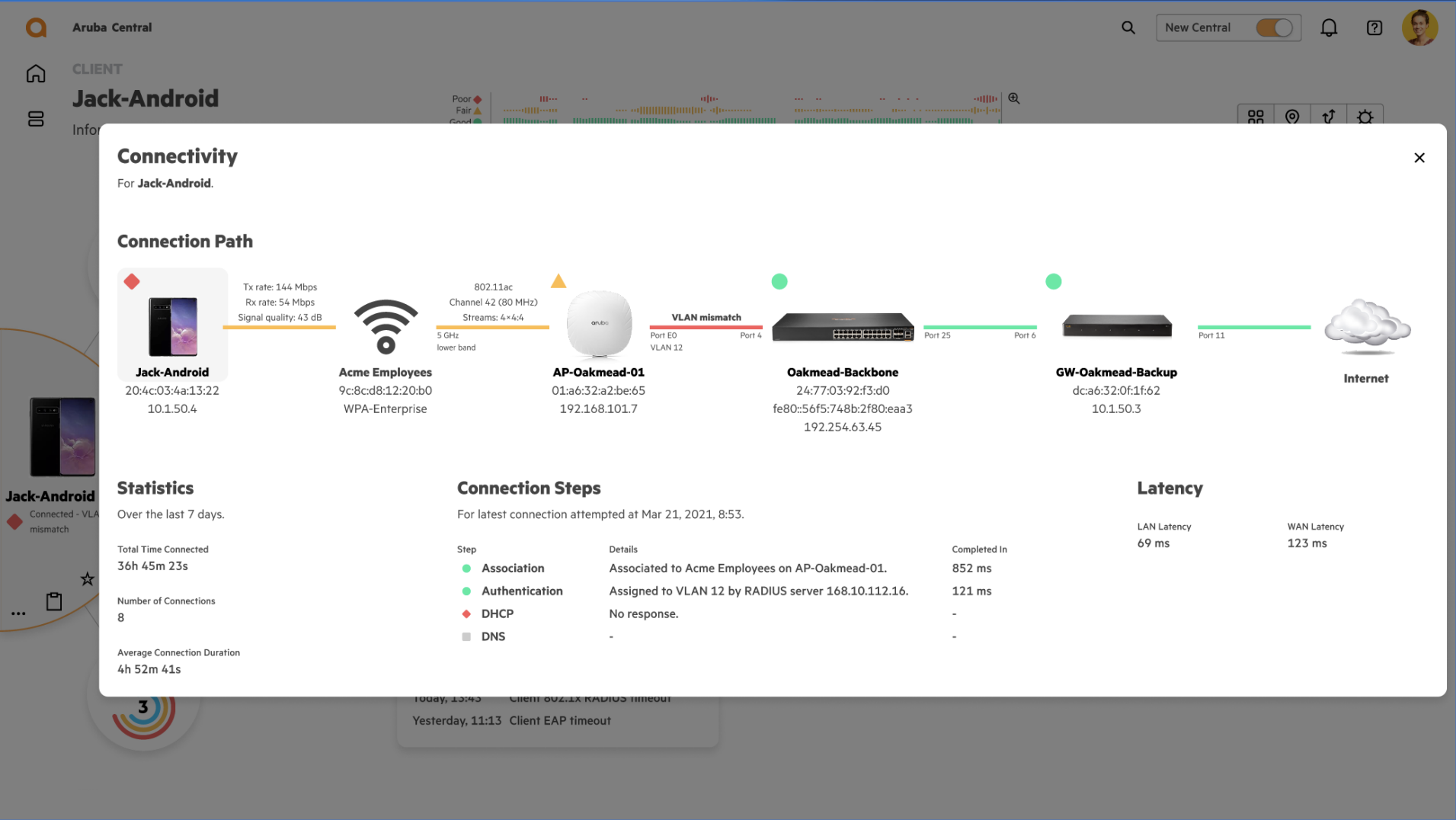
ACCURACY FOR A TRUE IDENTITY!



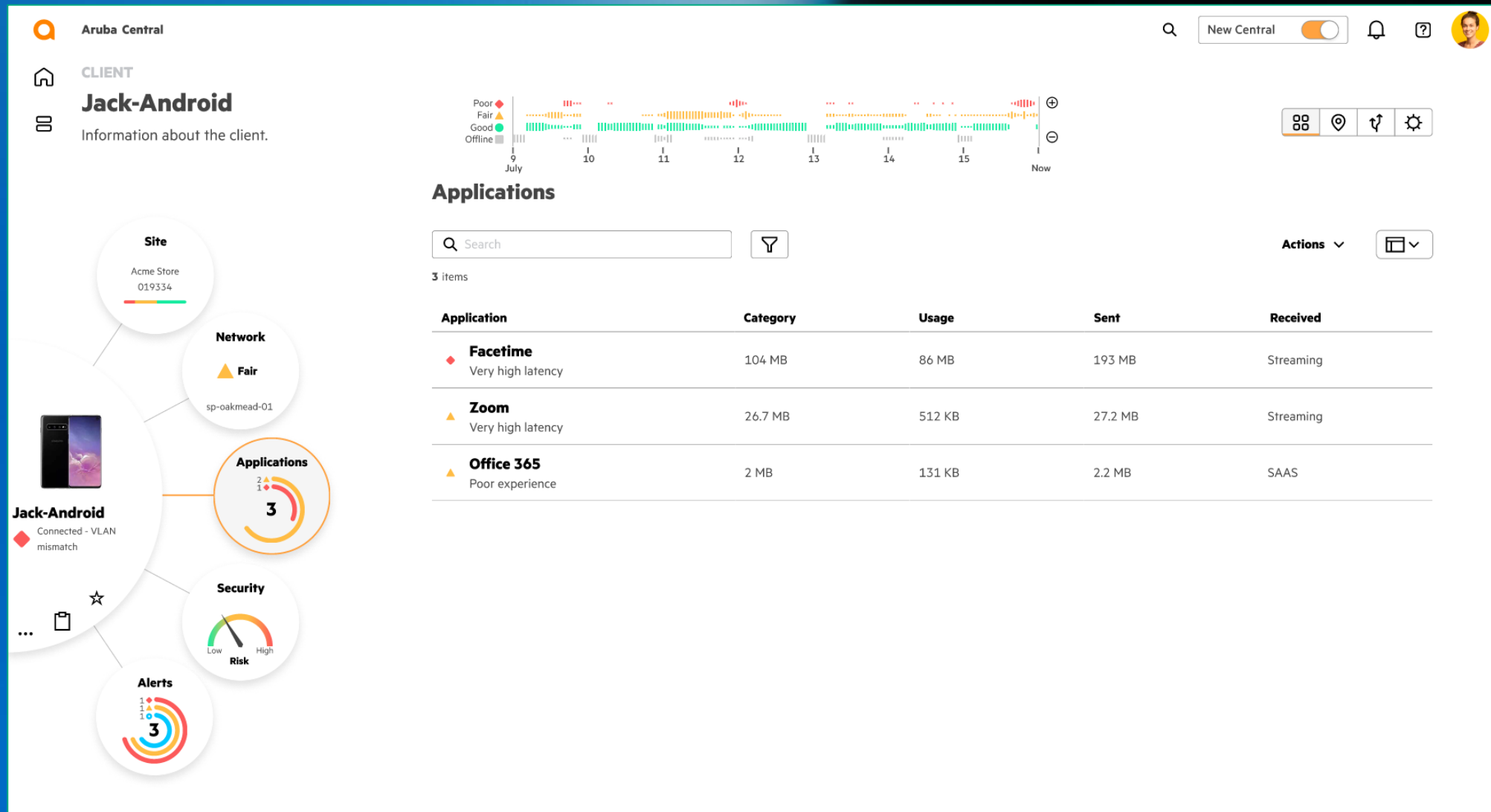
ONE-STOP EXPERIENCE VIEWS



ONE-STOP EXPERIENCE VIEWS



APPLICATION PERFORMANCE THAT'S EASY TO SEE



GIVING VISIBILITY INTO THE DATACENTRE



DEVICE-AGNOSTIC CONFIGURATION

AUTOMATING NETWORK CONFIG AT SCALE

Create a Policy

Name

Finance

Description

Finance Department

☒ Enabled

Applies to Device Functions*

2 device functions selected

Q Search Device Functions

All Device Functions

☒ Branch Gateway

☒ Mobility AP

☐ Microbranch AP

☐ Mobility Gateway

☐ Switch

Create Rule

Description

Allow access to finance server for Finance department

Source

Role

Role

Finance

Destination

Network

☐ Use alias

Options

☒ IPv4 Subnet

☐ IPv6 Prefix

IPv4 Subnet

100.0.0.0/24

Add

105.151.163.149/28

10.0.1.1/16

2.74.163.134/9

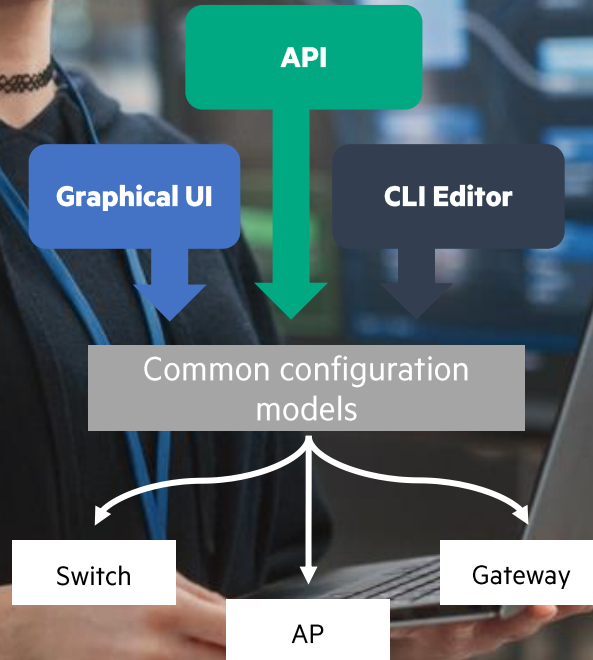
Service/Application

Any

Action

Allow

Create



Standardized workflows that are designed to reflect business intent

Advanced data modelling to automatically generate device specific configurations

100% API support unified across device types

Network Engineer, Advanced

User with advanced automation skills, tasked with an automation framework including 3rd party integrations



Thank You