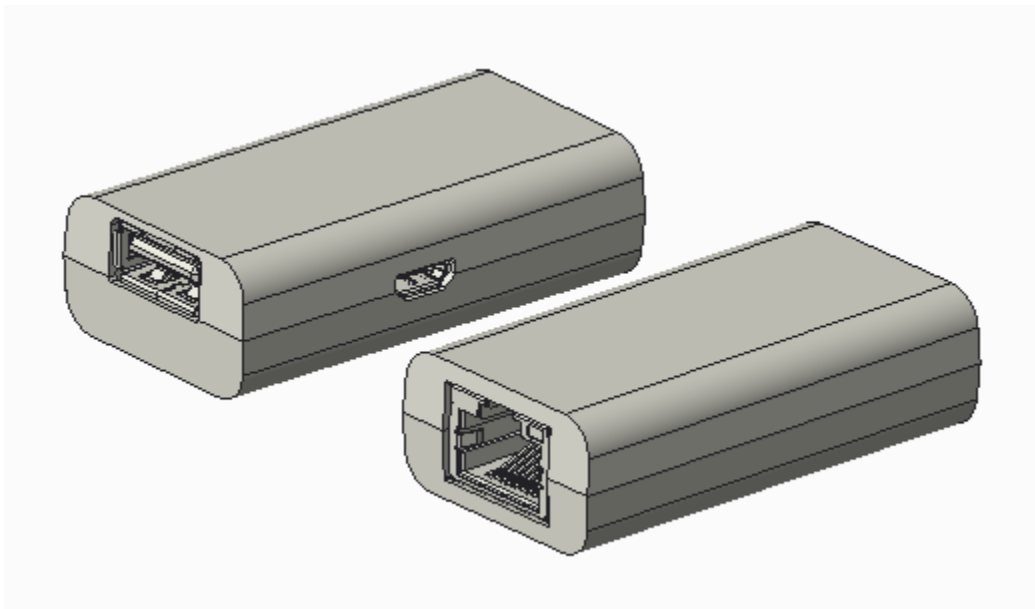


Aruba AP-MOD-SERU Console Port Adapter Module

Optional accessory for select Aruba Indoor AP models to convert the console port to RS-232

Overview

The Aruba AP-MOD-SERU module is a device that can be used with Aruba indoor access points (APs) when a traditional RS-232 serial console interface is needed instead of the proprietary interface that is available on these APs (TTL serial on a Micro-B USB physical connector). The RS-232 interface can be used to provide console access to the AP across longer distances and using standard terminal equipment.



The module ships with two short (357mm) USB 2 (Type-A <> Micro-B) cables to connect with the proprietary console interface on the AP (using the “AP” interface), as well as any standard USB power source (using the “PWR” interface). Alternatively, any standard equivalent USB cables can be used.

Typically, power will be drawn from the USB host interface on the AP itself (if available), but any standard 5V USB power adapter can be used for this (not shipping with the module nor orderable from Aruba). When using the AP USB host interface to supply power, make sure this port is not disabled in software.

Compatible AP models

The AP-MOD-SERU console port adapter module is compatible with the following indoor Aruba AP models:

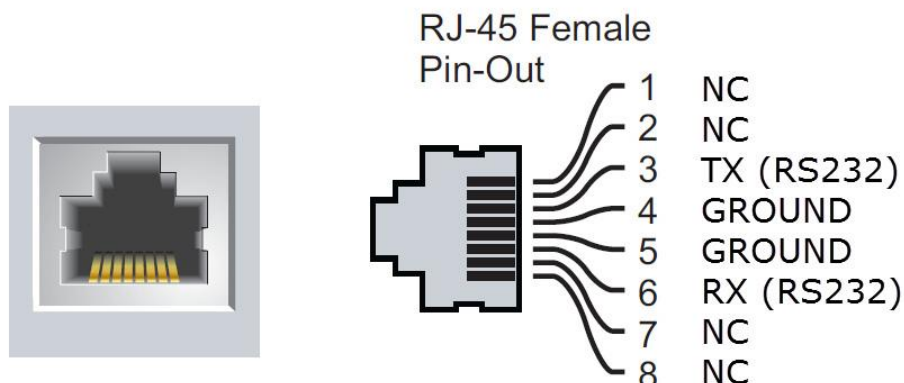
- 203H Series Hospitality Access Points (AP-203H)
- 203R Series Remote Access Points (AP-203R, AP-203RP)
- 303H Series Hospitality Access Points (AP-303H, AP-303HR)
- 303 Series Campus Access Points (AP-303, AP-303P)
- 340 Series Campus Access Points (AP-344, AP-345)
- All AP-5xx Indoor (Campus/Hospitality/Remote) Access Points

The module is not compatible with any other Aruba access points or other products.

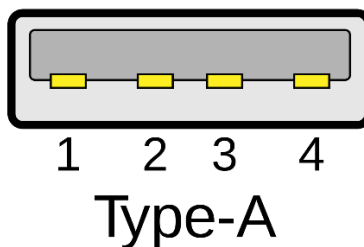
Datasheet – Aruba AP-MOD-SERU console port adapter module

Interfaces

RS-232 : Standard RS-232 port for serial console access, on a female RJ-45 connector.

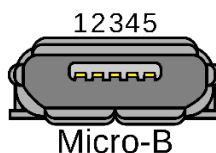


AP : Type-A USB port to connect the module to the proprietary AP console port using any standard Type-A <> Micro-B USB cable.



1: NC 2: RXD 3: TXD 4: Ground

PWR : Micro-B USB port to deliver power to the module using any standard Type-A <> Micro-B USB cable and any standard 5V USB power source (5V +/- 10%).



1: +5Vdc 2-3: NC 4-5: Ground

Power consumption

500mW/100mA max.

Mechanical specifications

Dimensions/weight (unit by itself):

- 55mm (L) x 29mm (W) x 16mm (D)
- 17g

Datasheet – Aruba AP-MOD-SERU console port adapter module

Dimensions/weight (unit with cables in shipping box):

- 140mm (W) x 70mm (D) x 51mm (H)
- 85g

Environmental specifications

Operating conditions:

- Temperature: 0C to +50C / +32F to +122F
- Humidity: 5% to 93% non-condensing
- ETS 300 019 class 3.2 environments

Storage and transportation conditions:

- Temperature: -40C to +70C / -40F to +158F
- Humidity: 5% to 93% non-condensing
- ETS 300 019 classes 1.2 and 2.3 environments

Regulatory compliance

- Class B device
- EN 55032/55024/55035
- AS/NZS CISPR 32
- FCC Part15B/ ICES-003
- VCCI
- KN32/KN35
- IEC 60950+IEC 62368CB 2nd +IEC 62368CB 3rd
- UL 60950+UL 62368

For more and country-specific regulatory information and approvals, please see your Aruba representative.

Current regulatory status can be verified on the [Aruba product compliance website](#).

Regulatory model number (RMN)

AP-MOD-SERU

Product warranty

One year; see the [Aruba warranty summary](#), wireless LAN accessories product category.

Part number

AP-MOD-SERU (R6Q99A)	AP-MOD-SERU Micro-B USB TTL3.3V to RJ-45 RS-232 AP Console Adapter Module
----------------------	---