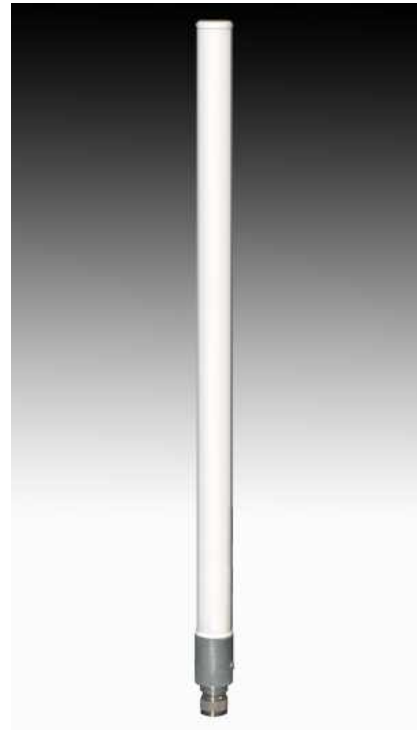


# S4908WBFNM

4900-5875 MHz Direct mount



## SPECIFICATIONS

Model	S4908WB
Frequency, MHz	4900-5875
Gain, dBi	10.0
Wind Surface Area ft. <sup>2</sup> (m <sup>2</sup> )	0.14 (0.013)
Wind Survivability, mph (kph)	125 (200)
Weight, lb. (kg)	0.40 (0.18)
Height, in. (cm)	19.5(49.5)
Nominal Impedance, Ohms	50
VSWR	2.0:1
Power Handling, Watts	10
Radiating Element	Plated copper laminate
Enclosure	Polycarbonate
RF Connector	N (m)

**Important Notice:** Please read all instructions carefully before attempting to install and use this product.

## SAFETY

Important Note : Please read all instructions carefully before attempting to install and use this product.

## APPLICATION

The Laird Technologies' S4908WB is a 4.9-5.9 GHz omnidirectional collinear array especially designed to compliment interior or exterior mounted wireless network systems. The integrated male N-connector is imbedded in the antenna base cap for direct AP mounting. Special venting permits either upright or inverted orientation in outdoor locations.

## LOCATION

For best results, mount the antenna and the associated AP unit near ceiling level or above exterior obstructions in a location near the center of the coverage area. A line-of-sight path between the antenna and active locations generally works best. Although 5.5 GHz signals penetrate cubical dividers, partitions, and interior walls with little attenuation, reinforced block walls, metal surfaces, and steel shelving may attenuate signals or cause multipath, a condition where reflected signals interfere with the primary signal path. Avoid mounting next to a column or vertical support that could create a "shadow zone" of reduced coverage to one portion of the room.

## MOUNTING

The antenna mounts directly to a connector on the unit itself or it may also be pipe-mounted and fed with a type-N in-line female connector when alternative positioning is required.

### LIMITED WARRANTY

LAIRD TECHNOLOGIES, P.O. BOX 4680, MANCHESTER, NEW HAMPSHIRE 03108, WARRANTS TO THE ORIGINAL CONSUMER PURCHASER FOR TWO YEARS FROM DATE OF PURCHASE THAT EACH LAIRD TECHNOLOGIES ANTENNA IS FREE OF DEFECTS IN MATERIAL OR WORKMANSHIP. IF, IN THE JUDGMENT OF LAIRD, ANY SUCH ANTENNA IS DEFECTIVE, THEN LAIRD TECHNOLOGIES WILL, AT ITS OPTION, REPAIR OR REPLACE THE ANTENNA AT ITS EXPENSE WITHIN THIRTY DAYS OF THE DATE THE ANTENNA IS RETURNED (AT PURCHASER'S EXPENSE) TO LAIRD OR ONE OF ITS AUTHORIZED REPRESENTATIVES. THIS WARRANTY IS IN LIEU OF ALL OTHER EXPRESSED WARRANTIES. ANY IMPLIED WARRANTY IS LIMITED IN DURATION TO ONE YEAR. LAIRD TECHNOLOGIES SHALL NOT BE LIABLE FOR ANY INCIDENTAL OR CONSEQUENTIAL DAMAGES WHICH MAY RESULT FROM A DEFECT. SOME STATES DO NOT ALLOW LIMITATIONS ON HOW LONG AN IMPLIED WARRANTY LASTS OR EXCLUSIONS OR LIMITATIONS OF INCIDENTAL OR CONSEQUENTIAL DAMAGES, SO THE ABOVE LIMITATION AND EXCLUSION MAY NOT APPLY TO YOU. THIS WARRANTY GIVES YOU SPECIFIC LEGAL RIGHTS, AND YOU MAY ALSO HAVE OTHER RIGHTS WHICH VARY FROM STATE TO STATE. THIS WARRANTY DOES NOT EXTEND TO ANY PRODUCTS WHICH HAVE BEEN SUBJECT TO MISUSE, NEGLIGENCE, ACCIDENT OR IMPROPER INSTALLATION, ANY REPAIRS OR ALTERATIONS OUTSIDE OF THE LAIRD TECHNOLOGIES FACTORY WILL NULLIFY THIS WARRANTY.

SPECIFICATIONS SUBJECT TO CHANGE WITHOUT NOTICE

### Warranty and Liability

LAIRD TECHNOLOGIES shall not be liable for any incidental or consequential damages which may result from a defective, or use, or improper or otherwise or installation, improper or otherwise. Please contact your vendor for technical support and warranty service



48 PERIMETER ROAD, MANCHESTER, NH 03103  
Tel: 603-627-7877-Fax: 603-627-1764

email: sales@cushcraft.com - web: www.cushcraft.com

958389\_GF\_AA