



Language Customization ArubaOS Captive Portal

Version 1.1

Document History

Reason for change	Version	Date	Author/Reviewed
Original Draft	1.0	06 Oct 2011	Shawn Adams
remove commercial	1.1	02 Jan 2012	Shawn Adams

CONTACT INFORMATION

Comments with regards to this document should be directed to:

Shawn Adams
sadams@arubanetworks.com
EMEA Customer Advocacy

Table of Contents

1 Introduction.....	3
2 Reference Documents.....	3
3 Materials.....	3
4 Basic Captive Portal	4
5 Initial Captive Portal Setup.....	6
5.1 Captive Portal Customization.....	7
5.2 Captive Portal Customization Notes.....	16

1 Introduction

Many customers would like to customize the ArubaOS native captive portal to use a local language. The topic is covered in the ArubaOS User Guide in some detail. This document does not intend to replace the User or Reference Guide material, but to serve as a quick "howto" or field primer to assist with such customizations.

2 Reference Documents

- ArubaOS 6.1 User Guide
- ArubaOS 6.1.x Release Note

The above document can be found in the support.arubanetworks.com.

- This Document

3 Materials

Any Aruba Mobility controller, properly configured to support captive portal operations.

- One ArubaOS Mobility Controller
- One or more Aruba Access Points
- One device to act as guest client

4 Basic Captive Portal

This process presumes a starting point whereby a guest client device can associate to an access point, obtain IP addressing, and is placed into an appropriate role to force user traffic to the captive portal profile. Once the guest user has authenticated, they will be directed to a "welcome page" in the Internet.

Example of working captive portal profile:
(particularly critical parameters in **BOLD**)

```
ip cp-redirect-address 192.168.18.248
```

```
ip access-list session captiveportal
  user alias controller svc-https dst-nat 8081
  user any svc-http dst-nat 8080
  user any svc-https dst-nat 8081
  user any svc-http-proxy1 dst-nat 8088
  user any svc-http-proxy2 dst-nat 8088
  user any svc-http-proxy3 dst-nat 8088
```

```
ip access-list session logon-control
  user any udp 68 deny
  any any svc-icmp permit
  any any svc-dns permit
  any any svc-dhcp permit
  any any svc-natt permit
```

```
user-role amigo_ACME_role
  vlan 18
  captive-portal "ACME-cp_prof"
  access-list session logon-control
  access-list session captiveportal
  !
```

```
aaa profile "amigo_cp_acme_aaa"
  initial-role "amigo_acme_role"
```

```
aaa authentication captive-portal "ACME-cp_prof"
  redirect-pause 3
  no user-logon
  guest-logon
  no logout-popup-window
  login-page "/upload/custom/ACME-cp_prof/Pruebas_Portal.html"
  welcome-page "http://www.arubanetworks.com"
```

```
!  
wlan ssid-profile "amigo_cp_acme"  
    essid "amigo_cp_acme"  
!  
  
wlan virtual-ap "amigo_cp_acme"  
    aaa-profile "amigo_cp_acme_aaa"  
    ssid-profile "amigo_cp_acme"  
!  
  
ap-group "campus"  
virtual-ap "amigo_cp_ACME"
```

5 Initial Captive Portal Setup

It is recommended to start with a "default" captive portal created with the WLAN wizard.

Verify that this captive portal allows the following before proceeding to the customization steps.

- Guest client associates with the AP
- Guest client obtains IP via DHCP
- Guest client can reach default gateway
- Guest client can reach captive portal IP address via HTTP and/or HTTPS
- Guest client can resolve DNS names
 - IP address of the captive portal (see controller configuration)
 - Internet Addresses (for example mit.edu)

Captive portal authentication can be completed, with the user redirected to the welcome page, or originally requested URL.

- User Login
- Guest Login
- Acceptable User Policy Only

Once this is achieved, the next section details the customization.

5.1 Captive Portal Customization

In this example, we will customize a single default CP profile to offer guest and user login services.

Step 1 - Basic Captive Portal Customization

Input Page text
Input Policy Text
Select custom background graphics file
Select custom logo graphics file

Step 2 - Upload Custom Content and Login Page

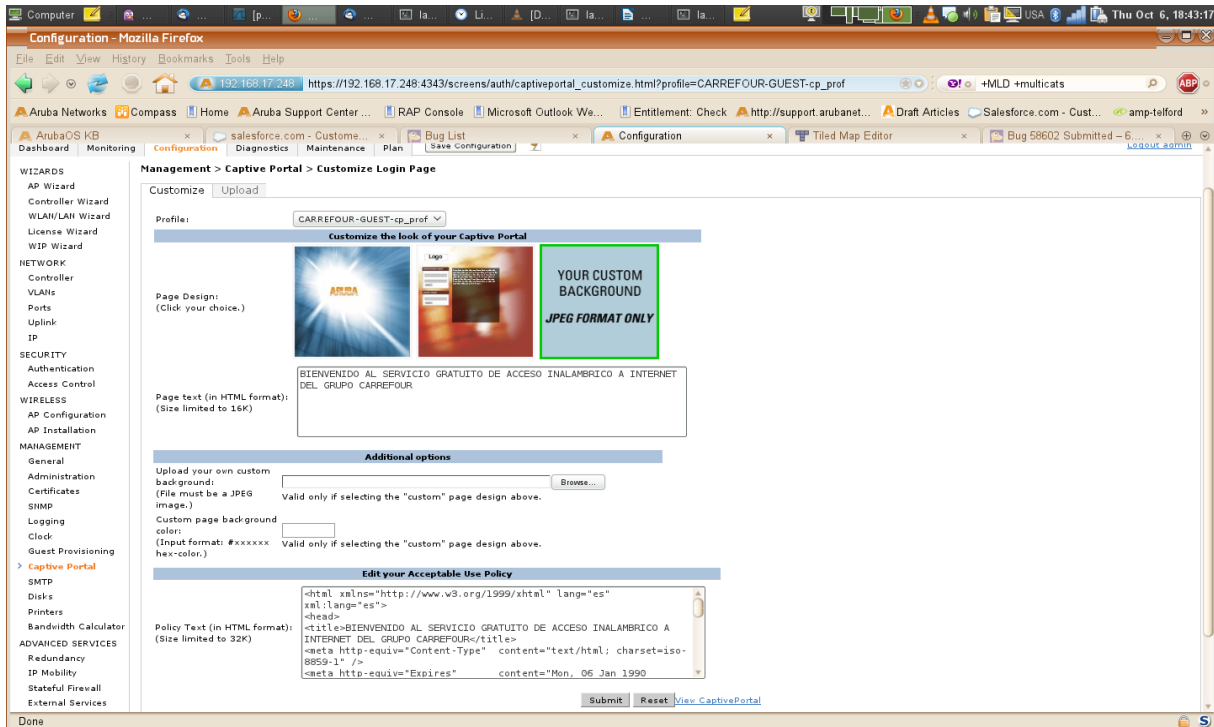
Upload Background Graphics file
Upload Logo graphics File
Upload Custom Top-Level Login HTML Page

Step 3 - Login page HTML Customization

Save Page Source to PC Hard Disk
Edit HTML to redirect

Step 4 - Login page CSS Customization

Save Page Source to PC Hard Disk
Edit HTML to include custom CSS content
Upload CSS file and CSS Graphics File
User Credentials Dialog Box



Captive Portal Customization Page

Step 1 - Basic Captive Portal Customization

In the UI, Navigate to MANAGEMENT-> Captive Portal -> Customization

Input Page text

Input Policy Text

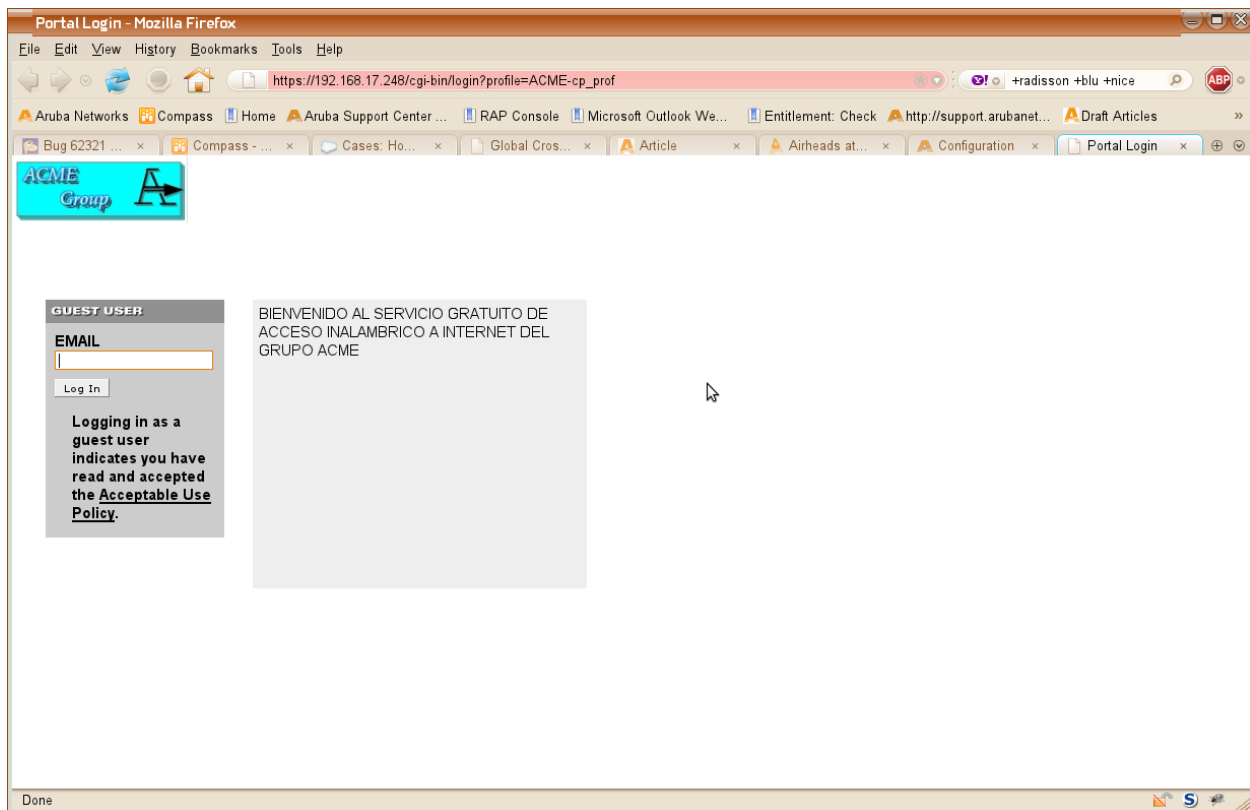
Select custom background graphics file

Select custom logo graphics file

Then press SUBMIT

Note: Pressing SUBMIT creates the top-level Login page with all elements entered. We will now modify this HTML file in the next step.

Use "view captive portal" to check this page to ensure it looks as desired.



Captive Portal preview

Step 2 - Upload Custom Content and Login Page

Right mouse-click and save this page as a text file to your PC hard disk.

Edit this file with the text , modifying text fields (enter button, etc...) for language customization.

In this example, editing began by searching for the keyword "EMAIL" and customizing, beginning with the line:

"Logging in as a guest user indicates...."

changing this to the selected local language:

"Registrarse como usuario implica haber leído y aceptar la política de so."

Additionally:

Find each ACTION line, and change the action from:

login

to:

/auth/index.html/u

Typically, there are 2 occurrences of "Log In" that must be changed.

Typically, there are 3 occurrences of "action" that must be changed.

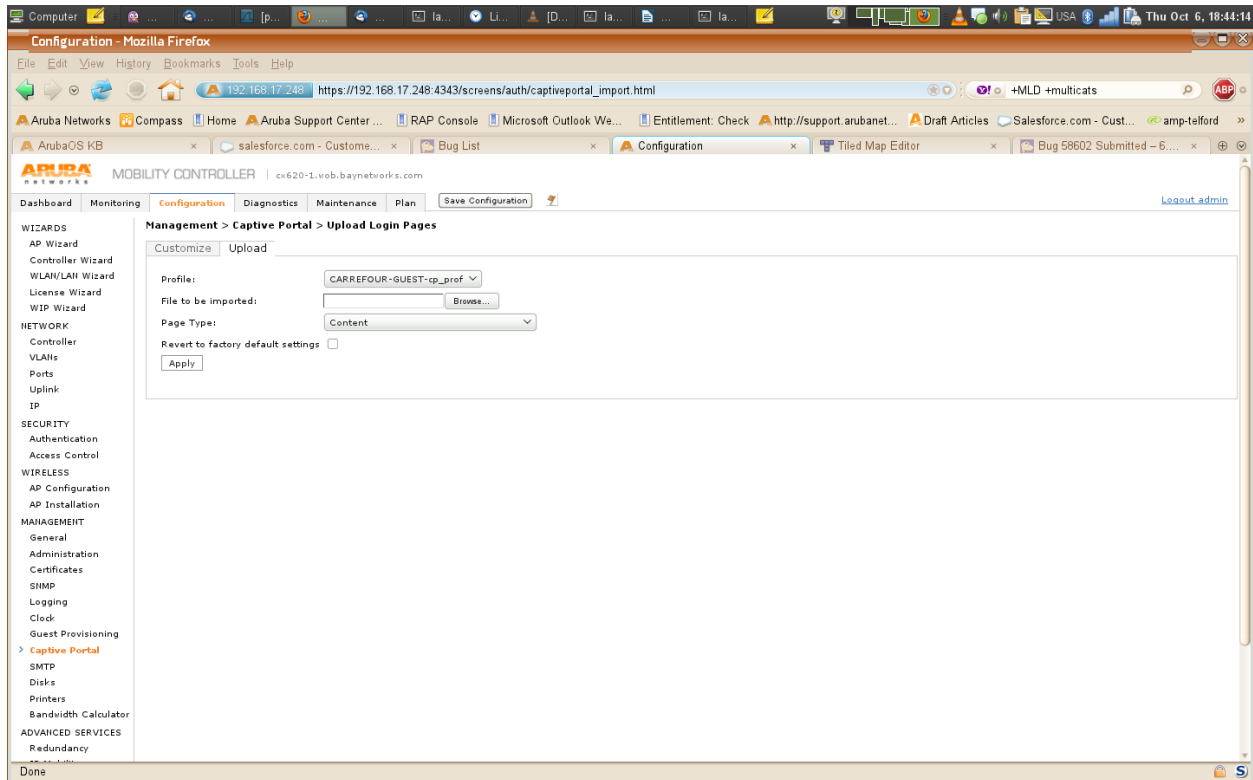
Typically, there are 2 occurrences of Acceptable Usage Text that must be changed.

Once a custom captive portal is defined, the path used by the internal Apache server changes. These new files, in a new subdirectory must reference the full path of commands that are not copied into the new custom directory.

Save this file as a text file. In the next step, we will upload this file to overwrite the previously created HTML top-level login page.

Step 3 - Login page HTML customization

In the UI, Navigate to MANAGEMENT-> Captive Portal -> Upload



Captive Portal Upload Page

Select the desired captive portal profile.

Select Background Graphics File, upload as "content"

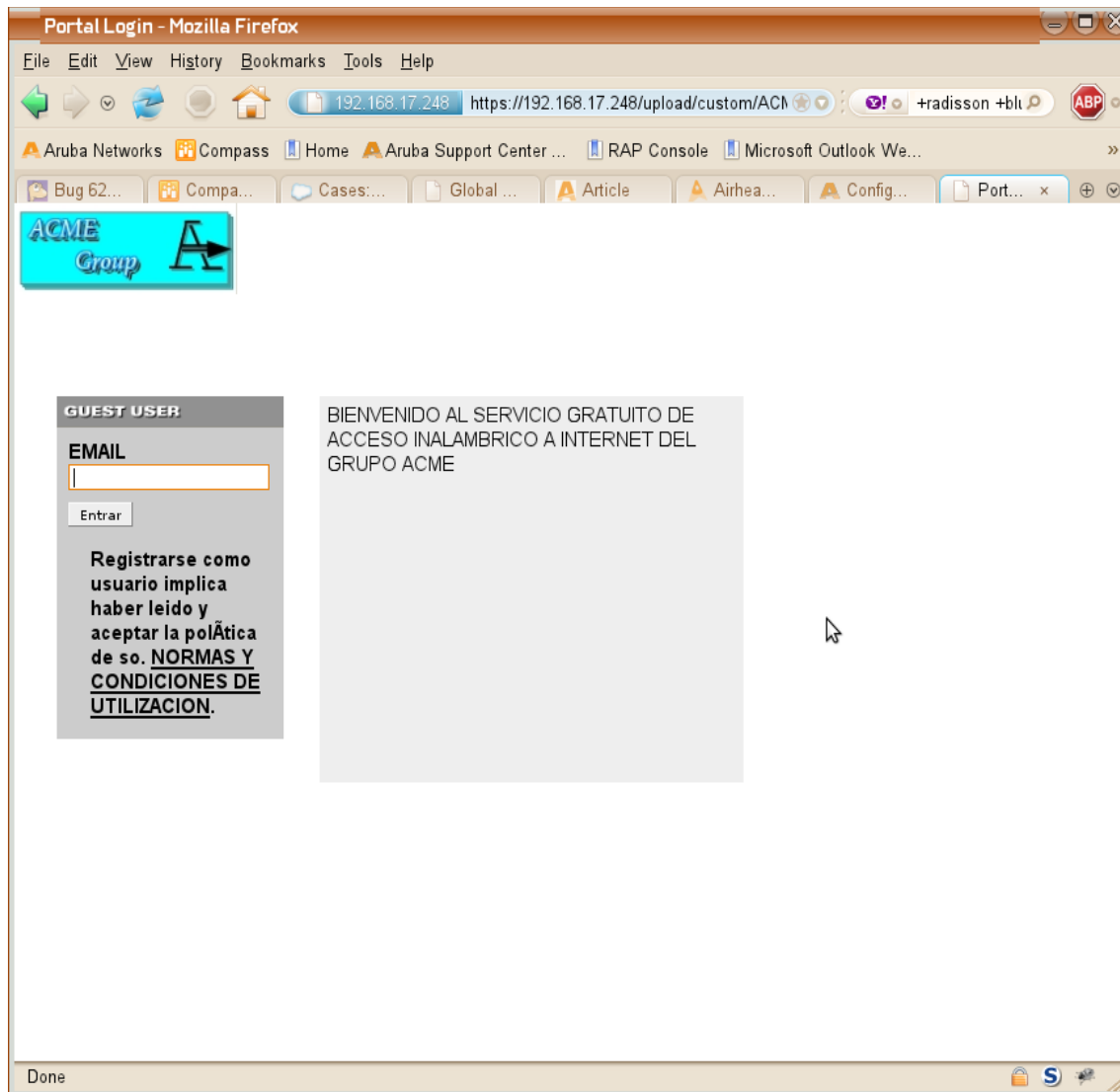
Select Logo Graphics File, upload as "content"

Select the newly edited HTML file, and upload as "captive portal Login (top-level)"

This is the page defined in the captive portal profile:

login-page "/upload/custom/ACME-GUEST-cp_prof/Pruebas_Portal.html"

Use "view captive portal" to check this page to ensure it looks as desired.



Captive Portal Preview Page after Upload

Step 4 - Login Page CSS Customization

At this point, the customized Captive portal pages are as desired, except for the User credentials dialog box in the left side.

We will now customize the CSS code within the top-level login page.

This dialog box is defined in CSS, as referenced in the top-level login page:

```
<link href="/auth/custom/styles.css" rel="stylesheet" media="screen" type="text/css" />
```

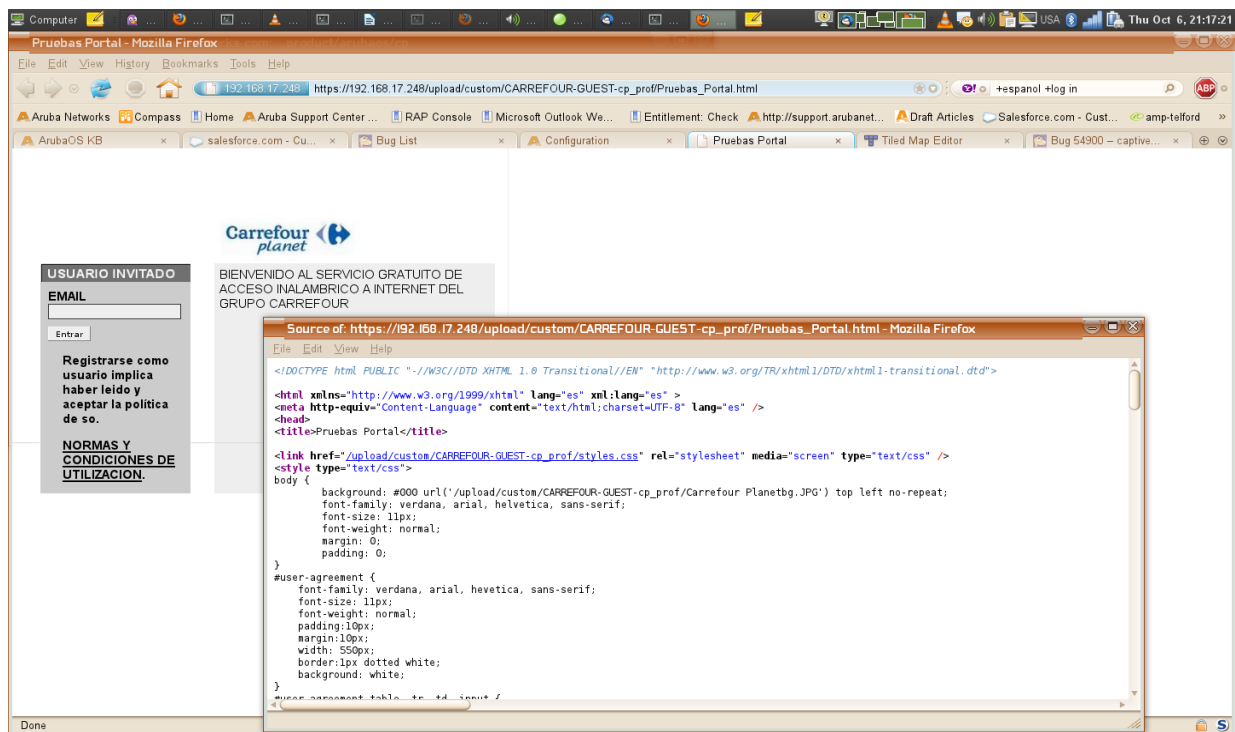
We will define a new styles.css and the associated graphic file which provide the words "REGISTERED USER" and "GUEST USER".

We will then modify our custom HTML top-level login page to use these new CSS files.

Obtain the default styles.css, and the 2 graphic files used in the default HTML page.

In the UI, Navigate to MANAGEMENT-> Captive Portal -> Customization

View the current page by selecting "view captive portal" in the lower right of the page.



Captive Portal Preview Page - Extracting the CSS file

Right mouse-click "View Page Source"

Click on the URL `"/auth/custom/styles.css"`

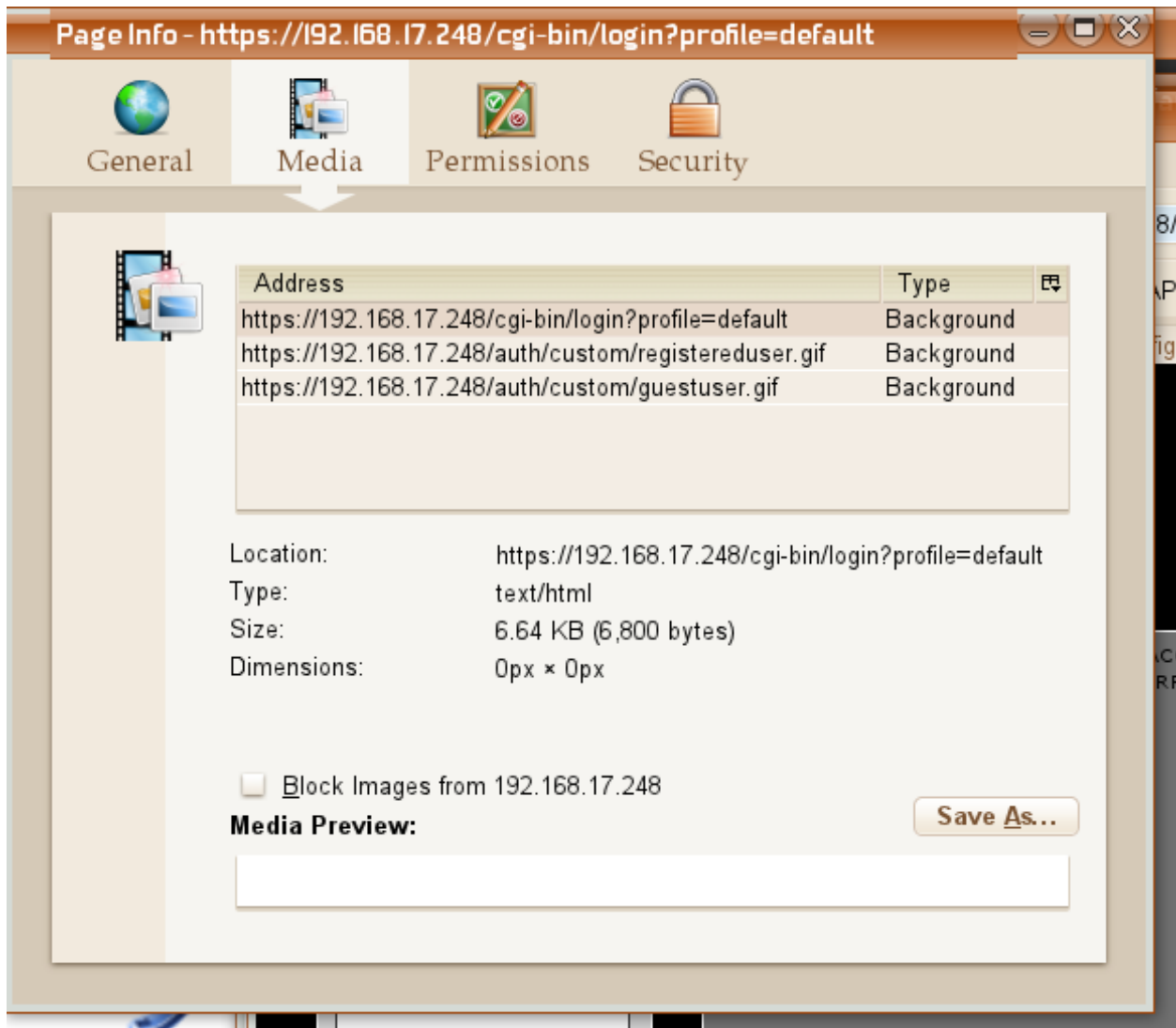
The styles.css file will be displayed. Save this file as text to your PC hard disk.

Note the graphic files referenced in this file:

```
h1#registeredhdr { background-image: url(registereduser.gif); }  
h1#guesthdr { background-image: url(guestuser.gif); }
```

Return to the captive portal preview page:

Right mouse-click "View Page Info"



Browser "View Page Info" Screen - Extracting CSS graphic files

Select each of the *.gif files, and select "Save As", saving each file to your PC hard disk. These files must be replaced by a similar graphics file with text in the desired language.

USUARIO INVITADO

Edit the styles.css to reflect this new filename

```
h1#guesthdr { background-image: url(usuario_invitado.gif); }
```

Modify the previously customized top-level login HTML page to reflect a new path for the styles.css file:

Original line:

```
<link href="/auth/custom/styles.css" rel="stylesheet" media="screen" type="text/css" />
```

New Line:

```
<link href="/upload/custom/ACME-cp_prof/styles.css" rel="stylesheet" media="screen" type="text/css" />
```

Upload the new graphic files, and newly modified styles.css to the captive portal as "content".

In the UI, Navigate to MANAGEMENT-> Captive Portal -> Upload

Select the desired captive portal profile.

Select newly modified styles.css, upload as "content"

Select newly created graphic files, upload as "content"

Select the newly edited HTML file, and upload as "captive portal Login (top-level)"

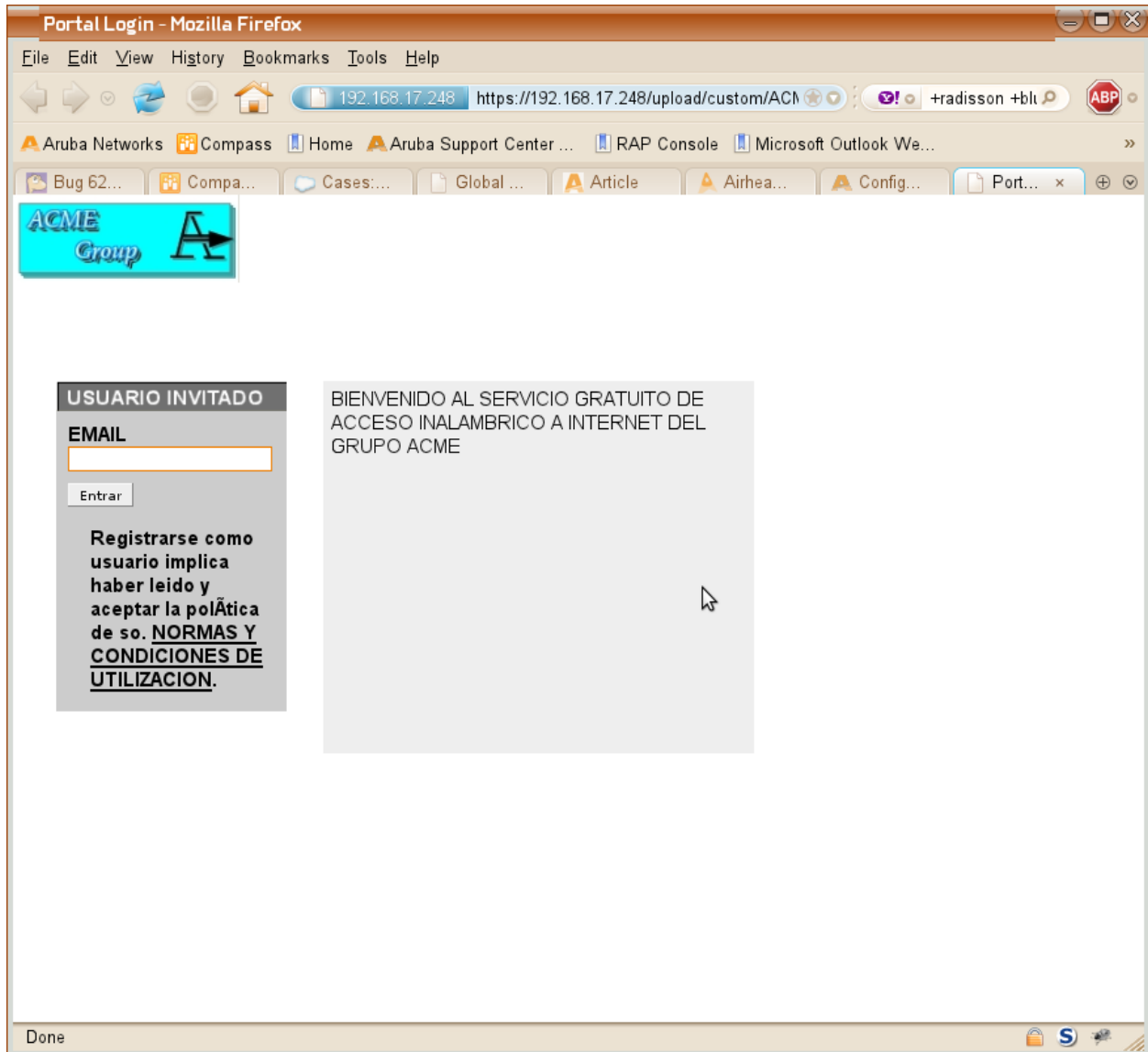
In the UI, Navigate to MANAGEMENT-> Captive Portal -> Customize.

Select the desired captive portal profile.

View the current page by selecting "view captive portal" in the lower right of the page.

NOTE: Using the captive portal customization screen to modify the captive portal page OVERWRITES the current uploaded HTML file !!!

Once you have uploaded the desired HTML file, you must make further customizations via this file, and uploading.



Fully Customized Captive Portal Login Page

END DOCUMENT

5.2 Captive Portal Customization Notes

It may be necessary to modify character set, and language support options within the Captive portal HTML and CSS pages.

Consult the ArubaOS User Guide Chapter "Captive Portal Customization"

If an "Agreement only" Captive portal is desired, it may be necessary to "phantom" a guest email address within the HTML top-level login page.

Current ArubaOS versions are affected by the following current issues, which mandate that captive portal use either guest or user login, but will not work without one or the other.

(as of this writing 2 January 2012)

[Bug 57500](#) - Guest logon doesn't work with custom login page

[Bug 54900](#) - captive portal guest and user login auth fail when custom html uploaded

ACME and the ACME Logo are a fictitious company, having no relation, or intended relation to any company or organization rightfully using the name "ACME".